

**FACILITIES AND LOCATIONS**

Facility/Location	Operating Agency
Aunts Creek	Corps of Engineers
Beaver	Corps of Engineers
Big Bay	U.S. Forest Service
Big Indian Access	Corps of Engineers
Big M	Corps of Engineers
Campbell Point	Corps of Engineers
Cape Fair	Corps of Engineers
Coombs Ferry Access	Corps of Engineers
Cow Creek Access	Corps of Engineers
Crick Creek	Corps of Engineers
Eagle Rock	Corps of Engineers
Indian Point	Corps of Engineers
Joe Bald Access	Commercial Concession
Port of Kimberling	Commercial Concession
Kings River Access	Commercial Concession
Long Creek	Commercial Concession
Mill Creek	Commercial Concession
Old 86	Commercial Concession
Shall Knob Rec. Area	Mo. Dept. of Conservation
Roaring River State Park & Fish Hatchery	Mo. Dept. of Conservation
Resident Office Complex	Corps of Engineers
Table Rock State Park	Mo. Dept. of Nat. Res.
Viney Creek	Corps of Engineers
Viola	Corps of Engineers
Holiday Hideaway	Commercial Concession
Holiday Island	Commercial Concession
Rock Lane Lodge	Commercial Concession

For more information, contact Table Rock Project Office. (417) 334-4101

**LEGEND**

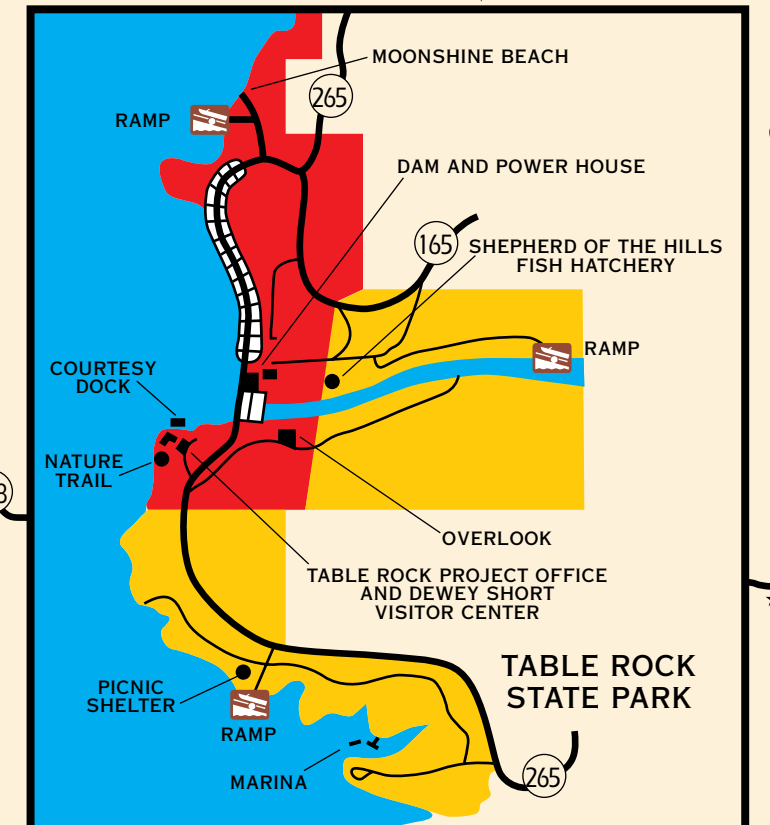
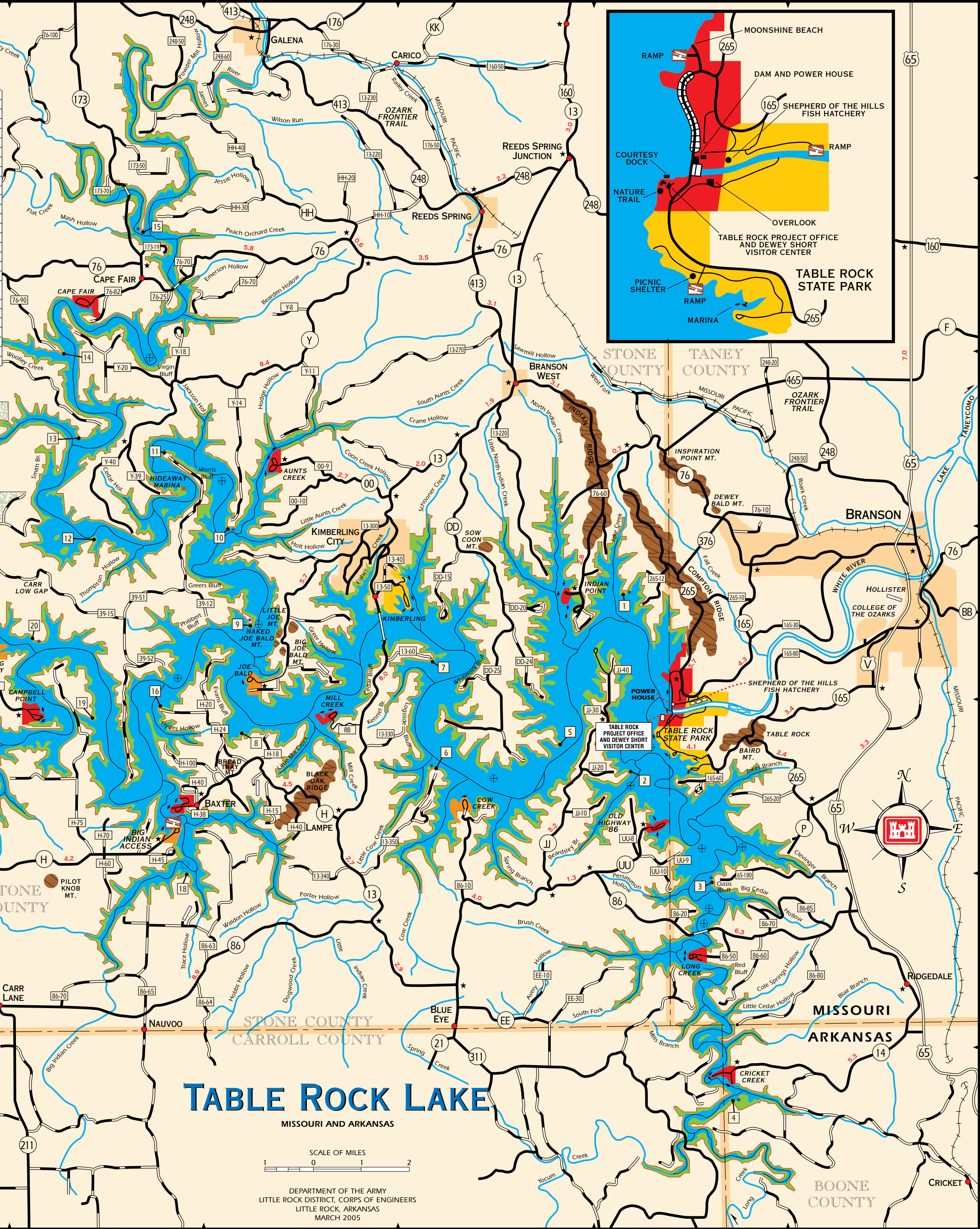
- U.S. Highway
- State Highway
- Paved Road
- Graveled or Secondary Road
- Mileage
- Areas Open for in Season Hunting
- Mountain Peaks
- Top of Conservation Pool, El. 915
- Park (Corps Operated)
- Park (Other Entity)
- Lake Access Only
- Location Marker
- Submerged or Exposed Point
- Buoy
- Boat Ramp
- Airstrip
- Directional Marker

**CAUTION**  
An attempt has been made to show boating hazards (submerged or exposed point), however other hazards may exist and boaters are cautioned to watch for unknown hazards resulting from variation in pool levels.

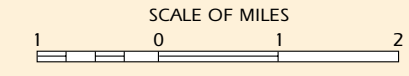
When winds of 25 M.P.H. or more are forecast or blowing, boats are cautioned to stay out of open water. FOR YOUR OWN SAFETY'S SAKE HEED THE WARNING!

**ROAD MILEAGES TO TABLE ROCK LAKE AND DAM**

FROM	MILES
Chicago, Illinois	562
Dallas, Texas	483
Des Moines, Iowa	447
Kansas City, Missouri	206
Little Rock, Arkansas	177
Memphis, Tennessee	313
Oklahoma City, Oklahoma	356
Omaha, Nebraska	445
Shreveport, Louisiana	382
St. Louis, Missouri	252
Tulsa, Oklahoma	250
Wichita, Kansas	273



**TABLE ROCK LAKE**  
MISSOURI AND ARKANSAS



DEPARTMENT OF THE ARMY  
LITTLE ROCK DISTRICT, CORPS OF ENGINEERS  
LITTLE ROCK, ARKANSAS  
MARCH 2005