

Facilities	Locations	Marina	Marine Dump Station	Public Launch Ramp	Courtesy Dock	Picnic Grounds	Group Shelter	Drinking Water	Swim Beach	Playground	Public Restrooms	Campground	Showers	Trailer Dump Station	Lodging	Visitor Center	Nature Trail	Operating Agency
Aunts Creek	6C		x	x	x	x	x	x	x	x	x	x	x	x				Corps of Engineers
Baxter	5E	x	x	x	x	x	x	x	x	x	x	x	x	x				Corps of Engineers
Beaver																		Town of Beaver
Big Bay	4D																	U.S. Forest Service
Big M	3E	x	x	x	x	x	x	x	x	x	x	x	x	x				Corps of Engineers
Campbell Point	5E	x	x	x	x	x	x	x	x	x	x	x	x	x				Corps of Engineers
Cape Fair	5B	x	x	x	x	x	x	x	x	x	x	x	x	x				Corps of Engineers
Cricket Creek	8E	x	x	x	x	x	x	x	x	x	x	x	x	x				Corps of Engineers
Dewey Short Visitor Center & Project Office																		Corps of Engineers
Eagle Rock	8E	x	x	x	x	x	x	x	x	x	x	x	x	x				Corps of Engineers
Hideaway	2G	x																Commercial Concession
Holiday Island	5C	x																Commercial Concession
Indian Point	7D	x	x	x	x	x	x	x	x	x	x	x	x	x				Corps of Engineers
Long Creek	8F	x	x	x	x	x	x	x	x	x	x	x	x	x				Commercial Concession
Mill Creek	6E	x	x	x	x	x	x	x	x	x	x	x	x	x				Corps of Engineers
Moonshine Beach	8D																	Corps of Engineers
Old 86	8E	x	x	x	x	x	x	x	x	x	x	x	x	x				Corps of Engineers
Port of Kimberling	6D	x	x	x	x	x	x	x	x	x	x	x	x	x				Commercial Concession
Roaring River State Park & Fish Hatchery	1E																	MO State Parks, MO Dept of Conservation
Rock Lane	7D	x																Commercial Concession
Shell Knob Recreation Area	4D																	U.S. Forest Service
Table Rock State Park	8E	x	x	x	x	x	x	x	x	x	x	x	x	x				MO State Parks
Viola	4E	x	x	x	x	x	x	x	x	x	x	x	x	x				Corps of Engineers

CAUTION
An attempt has been made to show boating hazards (submerged or exposed point); however other hazards may exist and boaters are cautioned to watch for unknown hazards resulting from variation in pool levels.

FOR YOUR OWN SAFETY
When winds of 25 M.P.H. or more are forecast or blowing, boats are cautioned to stay out of open water.

LEGEND

- 65 U.S. Highway
- 10 State Highway
- Paved Road
- Graveled or Secondary Road
- Corps Property
- Top of Conservation Pool, El. 915
- Railroad Tracks
- Park (Corps Operated)
- Park (Other Entity)
- Lake Access/Boat Ramp only
- Location Marker
- Submerged or Exposed Point
- Marinas
- Cities

For more information, contact the Table Rock Lake Project Office at (417) 213-4810 or the Dewey Short Visitor Center at (417) 213-4812

facebook.com/littlerockusace
www.sw.usace.army.mil

www.recreation.gov

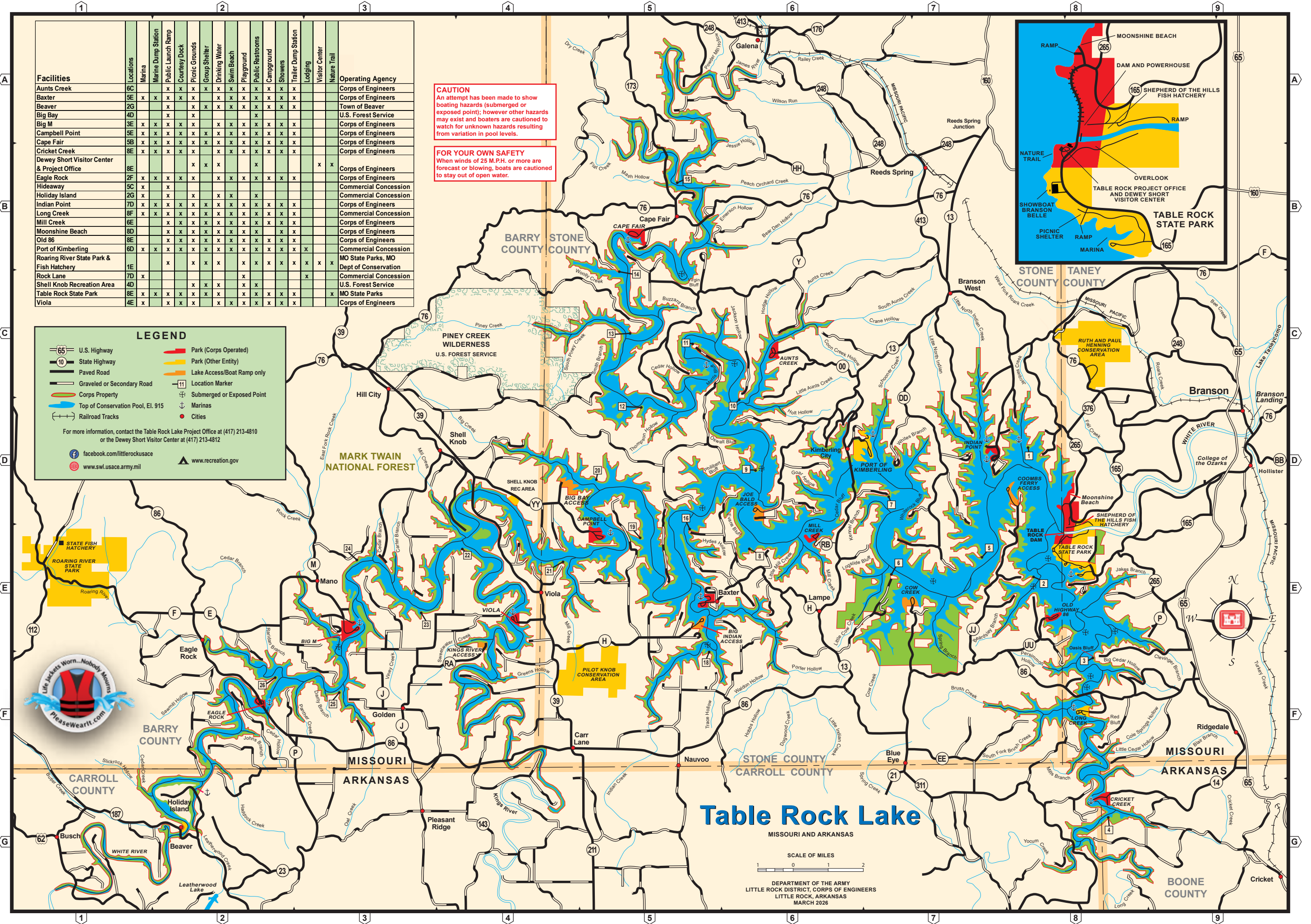
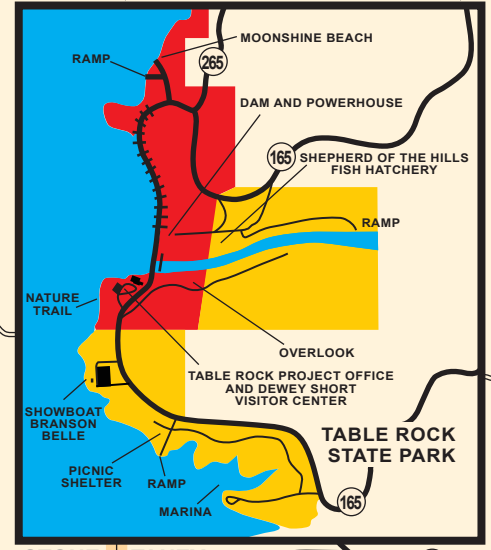


Table Rock Lake

MISSOURI AND ARKANSAS

SCALE OF MILES
1 0 1 2

DEPARTMENT OF THE ARMY
LITTLE ROCK DISTRICT, CORPS OF ENGINEERS
LITTLE ROCK, ARKANSAS
MARCH 2026