



**U.S. ARMY CORPS OF ENGINEERS
REGULATORY PROGRAM
APPROVED JURISDICTIONAL DETERMINATION FORM (INTERIM)
NAVIGABLE WATERS PROTECTION RULE**

I. ADMINISTRATIVE INFORMATION

Completion Date of Approved Jurisdictional Determination (AJD): 5/11/2021

ORM Number: SWL-2020-00351

Associated JDs: N/A

Review Area Location¹: State/Territory: Arkansas City: Mountain View County/Parish/Borough: Stone

Center Coordinates of Review Area: Latitude 35.88040 Longitude -92.10160

II. FINDINGS

A. Summary: Check all that apply. At least one box from the following list MUST be selected. Complete the corresponding sections/tables and summarize data sources.

- ☒ The review area is comprised entirely of dry land (i.e., there are no waters or water features, including wetlands, of any kind in the entire review area). Rationale: The project site includes a dry hollow with no stream features. The site is upslope from the start of an ephemeral stream indicated on the USGS Quad map.
- ☐ There are "navigable waters of the United States" within Rivers and Harbors Act jurisdiction within the review area (complete table in Section II.B).
- ☐ There are "waters of the United States" within Clean Water Act jurisdiction within the review area (complete appropriate tables in Section II.C).
- ☐ There are waters or water features excluded from Clean Water Act jurisdiction within the review area (complete table in Section II.D).

B. Rivers and Harbors Act of 1899 Section 10 (§ 10)²

§ 10 Name	§ 10 Size	§ 10 Criteria	Rationale for § 10 Determination
N/A.	N/A.	N/A.	N/A.

C. Clean Water Act Section 404

Territorial Seas and Traditional Navigable Waters ((a)(1) waters): ³				
(a)(1) Name	(a)(1) Size	(a)(1) Criteria	Rationale for (a)(1) Determination	
N/A.	N/A.	N/A.	N/A.	N/A.

Tributaries ((a)(2) waters):				
(a)(2) Name	(a)(2) Size	(a)(2) Criteria	Rationale for (a)(2) Determination	
N/A.	N/A.	N/A.	N/A.	N/A.

Lakes and ponds, and impoundments of jurisdictional waters ((a)(3) waters):				
(a)(3) Name	(a)(3) Size	(a)(3) Criteria	Rationale for (a)(3) Determination	
N/A.	N/A.	N/A.	N/A.	N/A.

¹ Map(s)/figure(s) are attached to the AJD provided to the requestor.

² If the navigable water is not subject to the ebb and flow of the tide or included on the District's list of Rivers and Harbors Act Section 10 navigable waters list, do NOT use this document to make the determination. The District must continue to follow the procedure outlined in 33 CFR part 329.14 to make a Rivers and Harbors Act Section 10 navigability determination.

³ A stand-alone TNW determination is completed independently of a request for an AJD. A stand-alone TNW determination is conducted for a specific segment of river or stream or other type of waterbody, such as a lake, where upstream or downstream limits or lake borders are established. A stand-alone TNW determination should be completed following applicable guidance and should NOT be documented on the AJD Form.



**U.S. ARMY CORPS OF ENGINEERS
REGULATORY PROGRAM
APPROVED JURISDICTIONAL DETERMINATION FORM (INTERIM)
NAVIGABLE WATERS PROTECTION RULE**

Adjacent wetlands ((a)(4) waters):			
(a)(4) Name	(a)(4) Size	(a)(4) Criteria	Rationale for (a)(4) Determination
N/A.	N/A.	N/A.	N/A.

D. Excluded Waters or Features

Excluded waters ((b)(1) – (b)(12)): ⁴			
Exclusion Name	Exclusion Size	Exclusion ⁵	Rationale for Exclusion Determination
N/A.	N/A.	N/A.	N/A.

III. SUPPORTING INFORMATION

A. Select/enter all resources that were used to aid in this determination and attach data/maps to this document and/or references/citations in the administrative record, as appropriate.

☒ Information submitted by, or on behalf of, the applicant/consultant: [Project site map submitted by Stone County on Sep. 28, 2020.](#)

This information is sufficient for purposes of this AJD.

Rationale: [N/A](#)

☐ Data sheets prepared by the Corps: [Title\(s\) and/or date\(s\).](#)

☒ Photographs: [Aerial: Google Earth Pro, Nov. 15, 2020.](#)

☐ Corps site visit(s) conducted on: [Date\(s\).](#)

☐ Previous Jurisdictional Determinations (AJDs or PJDs): [ORM Number\(s\) and date\(s\).](#)

☐ Antecedent Precipitation Tool: [provide detailed discussion in Section III.B.](#)

☒ USDA NRCS Soil Survey: [Web Soil Survey, Stone County, Arkansas.](#)

☒ USFWS NWI maps: [Wetlands Inventory Mapper.](#)

☒ USGS topographic maps: [Sylamore, AR 1997.](#)

Other data sources used to aid in this determination:

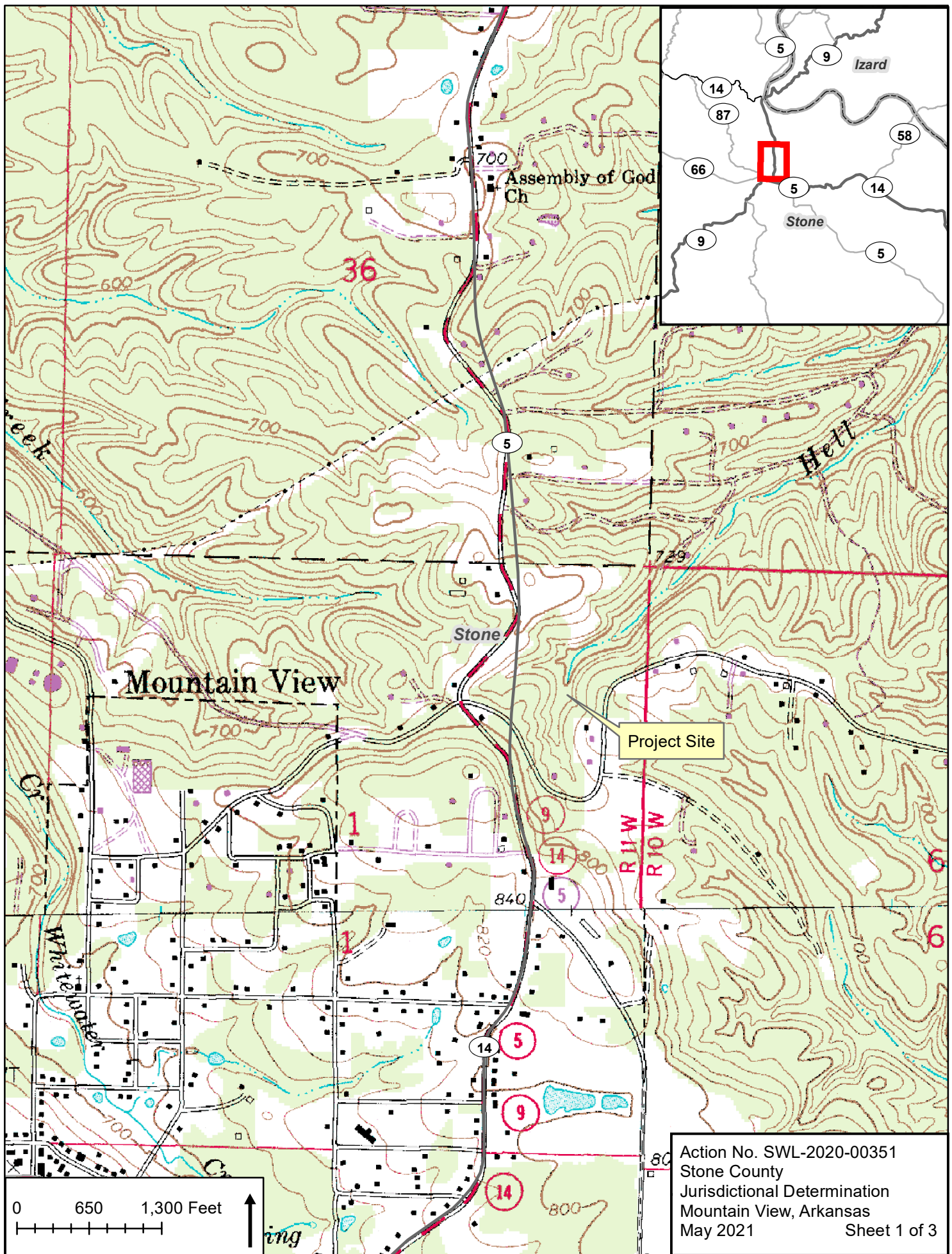
Data Source (select)	Name and/or date and other relevant information
USGS/WBD/NHD data/maps	National Map.
USDA Sources	N/A.
NOAA Sources	N/A.
CorpsMap ORM Map Layers	Accessed May 11, 2021
State/Local/Tribal Sources	N/A.
Other Sources	N/A.

B. Typical year assessment(s): [N/A](#)

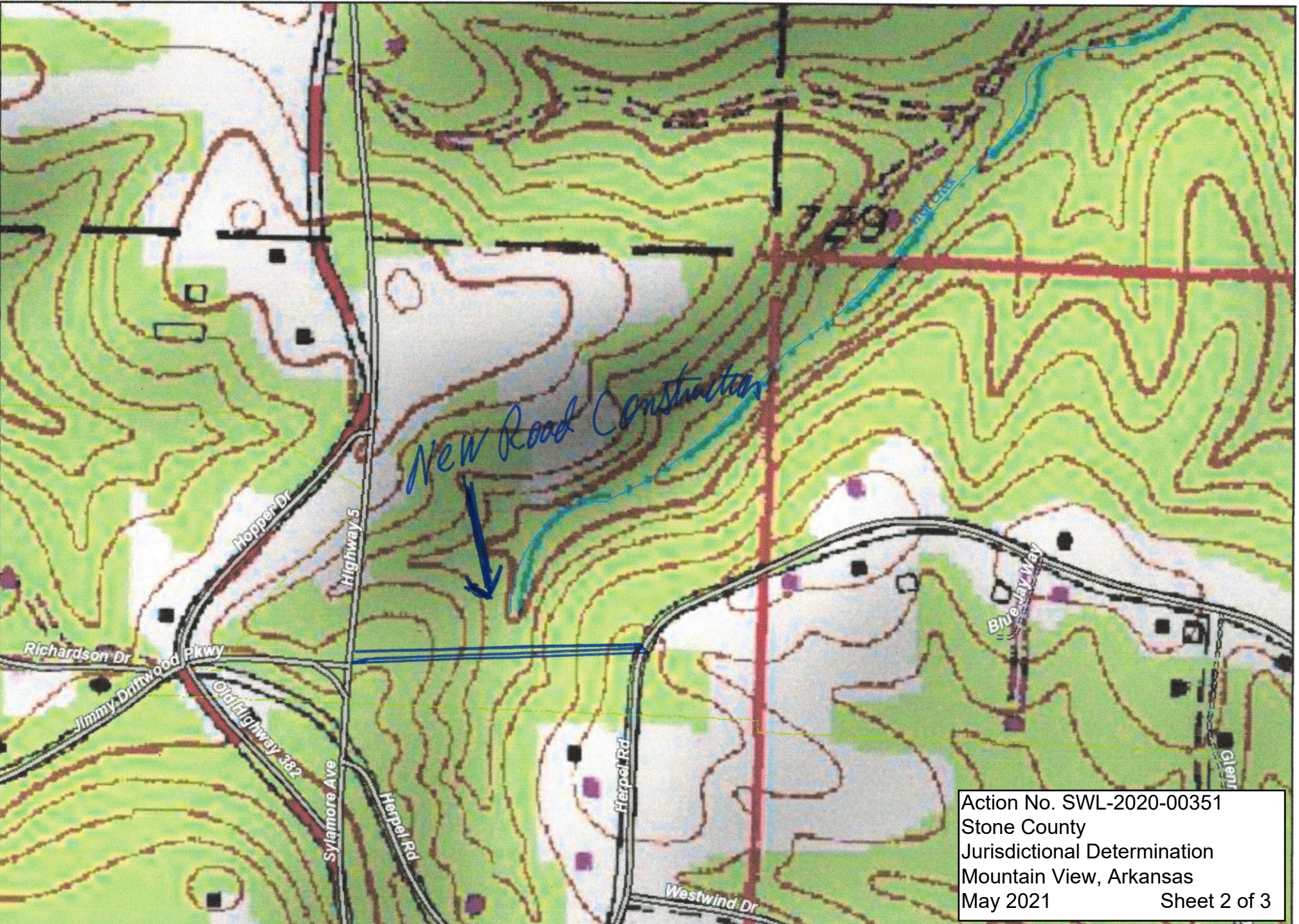
C. Additional comments to support AJD: [The subject property is located entirely in uplands with no surface water features. The site includes a dry hollow located upslope from the beginning point of an ephemeral stream.](#)

⁴ Some excluded waters, such as (b)(2) and (b)(4), may not be specifically identified on the AJD form unless a requestor specifically asks a Corps district to do so. Corps districts may, in case-by-case instances, choose to identify some or all of these waters within the review area.

⁵ Because of the broad nature of the (b)(1) exclusion and in an effort to collect data on specific types of waters that would be covered by the (b)(1) exclusion, four sub-categories of (b)(1) exclusions were administratively created for the purposes of the AJD Form. These four sub-categories are not new exclusions, but are simply administrative distinctions and remain (b)(1) exclusions as defined by the NWPR.



Action No. SWL-2020-00351
Stone County
Jurisdictional Determination
Mountain View, Arkansas
May 2021
Sheet 1 of 3



Action No. SWL-2020-00351
Stone County
Jurisdictional Determination
Mountain View, Arkansas
May 2021
Sheet 2 of 3



Action No. SWL-2020-00351
Stone County
Jurisdictional Determination
Mountain View, Arkansas
May 2021
Sheet 3 of 3

Google

Map data ©2020 Imagery ©2020 Maxar Technologies, State of Arkansas, USDA Farm Service Agency

1 inch = 353 feet

Created By Tina Thomas on 9/28/2020 4:09:54 PM via DataScout OneMap

This map should be used for reference purposes only and should not be considered a legal document. While every effort has been made to ensure the accuracy of this product, the publisher accepts no responsibility for any errors or omissions nor for any loss or damage alleged to be suffered by anyone as a result of the publication of this map and the notations on it, or as a result of the use or misuse of the information provided herein.