



DEPARTMENT OF THE ARMY
LITTLE ROCK DISTRICT, CORPS OF ENGINEERS
POST OFFICE BOX 867
LITTLE ROCK, ARKANSAS 72203-0867
www.swl.usace.army.mil

CESWL-RD

29 January 2026

MEMORANDUM FOR RECORD

SUBJECT: US Army Corps of Engineers (Corps) Pre-2015 Regulatory Regime Approved Jurisdictional Determination in Light of *Sackett v. EPA*, 143 S. Ct. 1322 (2023),¹ **SWL 2025-00172** []²

BACKGROUND. An Approved Jurisdictional Determination (AJD) is a Corps document stating the presence or absence of waters of the United States on a parcel or a written statement and map identifying the limits of waters of the United States on a parcel. AJDs are clearly designated appealable actions and will include a basis of JD with the document.³ AJDs are case-specific and are typically made in response to a request. AJDs are valid for a period of five years unless new information warrants revision of the determination before the expiration date or a District Engineer has identified, after public notice and comment, that specific geographic areas with rapidly changing environmental conditions merit re-verification on a more frequent basis.⁴ For the purposes of this AJD, we have relied on section 10 of the Rivers and Harbors Act of 1899 (RHA),⁵ the Clean Water Act (CWA) implementing regulations published by the Department of the Army in 1986 and amended in 1993 (references 2.a. and 2.b. respectively), the 2008 *Rapanos-Carabell* guidance (reference 2.c.), and other applicable guidance, relevant case law and longstanding practice, (collectively the pre-2015 regulatory regime), and the *Sackett* decision (reference 2.d.) in evaluating jurisdiction.

This Memorandum for Record (MFR) constitutes the basis of jurisdiction for a Corps AJD as defined in 33 CFR §331.2. The features addressed in this AJD were evaluated consistent with the definition of “waters of the United States” found in the pre-2015 regulatory regime and consistent with the Supreme Court’s decision in *Sackett*. This AJD did not rely on the 2023 “Revised Definition of ‘Waters of the United States,’” as

¹ While the Supreme Court’s decision in *Sackett* had no effect on some categories of waters covered under the CWA, and no effect on any waters covered under RHA, all categories are included in this Memorandum for Record for efficiency.

² When documenting aquatic resources within the review area that are jurisdictional under the Clean Water Act (CWA), use an additional MFR and group the aquatic resources on each MFR based on the TNW, interstate water, or territorial seas that they are connected to. Be sure to provide an identifier to indicate when there are multiple MFRs associated with a single AJD request (i.e., number them 1, 2, 3, etc.).

³ 33 CFR 331.2.

⁴ Regulatory Guidance Letter 05-02.

⁵ USACE has authority under both Section 9 and Section 10 of the Rivers and Harbors Act of 1899 but for convenience, in this MFR, jurisdiction under RHA will be referred to as Section 10.

CESWL-RD

SUBJECT: Pre-2015 Regulatory Regime Approved Jurisdictional Determination in Light of *Sackett v. EPA*, 143 S. Ct. 1322 (2023), SWL 2025-00172

amended on 8 September 2023 (Amended 2023 Rule) because, as of the date of this decision, the Amended 2023 Rule is not applicable in this state due to litigation.

1. SUMMARY OF CONCLUSIONS.

- a. Provide a list of each individual feature within the review area and the jurisdictional status of each one (i.e., identify whether each feature is/is not a water of the United States and/or a navigable water of the United States).
 - i. Wet1 (~1.45 acres, isolated/non-abutting an RPW), non-jurisdictional
 - ii. Wet2 (~0.85 acres, isolated/non-abutting an RPW), non-jurisdictional
 - iii. Wet3 (~0.07 acres, isolated/non-abutting an RPW), non-jurisdictional
 - iv. Wet4 (~0.10 acres, isolated/non-abutting an RPW), non-jurisdictional
 - v. Wet5 (~0.23 acres, isolated/non-abutting an RPW), non-jurisdictional
 - vi. Wet6 (~0.62 acres, isolated/non-abutting an RPW), non-jurisdictional
 - vii. Wet7 (~0.09 acres, isolated/non-abutting an RPW), non-jurisdictional
 - viii. Wet8 (~0.94 acres, isolated/non-abutting an RPW), non-jurisdictional
 - ix. Wet9 (~0.18 acres, isolated/non-abutting an RPW), non-jurisdictional
 - x. Pond1 (~0.23 acres, isolated/upland), non-jurisdictional
 - xi. Pond2 (~0.04 acres, isolated/upland), non-jurisdictional
 - xii. S1 (~204 linear feet long, non-RPW), non-Jurisdictional
 - xiii. S2 (~25 linear feet long, non-RPW), non-Jurisdictional

2. REFERENCES.

- a. Final Rule for Regulatory Programs of the Corps of Engineers, 51 FR 41206 (November 13, 1986).
- b. Clean Water Act Regulatory Programs, 58 FR 45008 (August 25, 1993).

- c. U.S. EPA & U.S. Army Corps of Engineers, Clean Water Act Jurisdiction Following the U.S. Supreme Court's Decision in *Rapanos v. United States & Carabell v. United States* (December 2, 2008)
 - d. *Sackett v. EPA*, 598 U.S. 651, 143 S. Ct. 1322 (2023)
 - e. 1987 Corps of Engineers Wetlands Delineation Manual and the Regional Supplement to the Corps Wetland Delineation Manual: Eastern Mountains and Piedmont Region (Version 2.0) (USACE, 2012).
3. REVIEW AREA. The site is located in the SE ¼ of section 12 and the NE ¼ of section 13, T. 6 N., R. 17 W., Morrilton, in Conway County, Arkansas. The review area is an approximately 38.5-acre site labeled as "Project Area" on the attached maps. The approximate geographic center of the project area is latitude 35.16895, longitude -92.75610.
 4. NEAREST TRADITIONAL NAVIGABLE WATER (TNW), INTERSTATE WATER, OR THE TERRITORIAL SEAS TO WHICH THE AQUATIC RESOURCE IS CONNECTED. Arkansas River (TNW) which is also a Section 10 Waterway.^{6 7}
 5. FLOWPATH FROM THE SUBJECT AQUATIC RESOURCES TO A TNW, INTERSTATE WATER, OR THE TERRITORIAL SEAS. Generally, all aquatic features, within the review area, drain to the north – northeast (per StreamStats) where they exit the review area via an unnamed non-RPW, to Caney Creek (RPW), to Point Remove Creek (RPW), to the Arkansas River (TNW).
 6. SECTION 10 JURISDICTIONAL WATERS⁸: Describe aquatic resources or other features within the review area determined to be jurisdictional in accordance with Section 10 of the Rivers and Harbors Act of 1899. Include the size of each aquatic

⁶ This MFR should not be used to complete a new stand-alone TNW determination. A stand-alone TNW determination for a water that is not subject to Section 9 or 10 of the Rivers and Harbors Act of 1899 (RHA) is completed independently of a request for an AJD. A stand-alone TNW determination is conducted for a specific segment of river or stream or other type of waterbody, such as a lake, where upstream or downstream limits or lake borders are established.

⁷ This MFR should not be used to complete a new stand-alone TNW determination. A stand-alone TNW determination for a water that is not subject to Section 9 or 10 of the Rivers and Harbors Act of 1899 (RHA) is completed independently of a request for an AJD. A stand-alone TNW determination is conducted for a specific segment of river or stream or other type of waterbody, such as a lake, where upstream or downstream limits or lake borders are established.

⁸ 33 CFR 329.9(a) A waterbody which was navigable in its natural or improved state, or which was susceptible of reasonable improvement (as discussed in § 329.8(b) of this part) retains its character as "navigable in law" even though it is not presently used for commerce or is presently incapable of such use because of changed conditions or the presence of obstructions.

resource or other feature within the review area and how it was determined to be jurisdictional in accordance with Section 10.⁹ N/A

7. SECTION 404 JURISDICTIONAL WATERS: Describe the aquatic resources within the review area that were found to meet the definition of waters of the United States in accordance with the pre-2015 regulatory regime and consistent with the Supreme Court's decision in *Sackett*. List each aquatic resource separately, by name, consistent with the naming convention used in section 1, above. Include a rationale for each aquatic resource, supporting that the aquatic resource meets the relevant category of "waters of the United States" in the pre-2015 regulatory regime. The rationale should also include a written description of, or reference to a map in the administrative record that shows, the lateral limits of jurisdiction for each aquatic resource, including how that limit was determined, and incorporate relevant references used. Include the size of each aquatic resource in acres or linear feet and attach and reference related figures as needed.

- a. TNWs (a)(1): N/A
- b. Interstate Waters (a)(2): N/A
- c. Other Waters (a)(3): N/A
- d. Impoundments (a)(4): N/A
- e. Tributaries (a)(5): N/A
- f. The territorial seas (a)(6): N/A
- g. Adjacent wetlands (a)(7): N/A

8. NON-JURISDICTIONAL AQUATIC RESOURCES AND FEATURES

- a. Describe aquatic resources and other features within the review area identified as "generally non-jurisdictional" in the preamble to the 1986 regulations (referred to as "preamble waters").¹⁰ Include size of the aquatic resource or feature within the review area and describe how it was determined to be non-jurisdictional under the CWA as a preamble water.

⁹ This MFR is not to be used to make a report of findings to support a determination that the water is a navigable water of the United States. The district must follow the procedures outlined in 33 CFR part 329.14 to make a determination that water is a navigable water of the United States subject to Section 10 of the RHA.

¹⁰ 51 FR 41217, November 13, 1986.

- i. Pond1 is an approximately 0.23-acre pond located in the center of the review area. No discernible channel was noted, entering or exiting, during the site visit and per the delineation report the pond is supported by sheet flow retention of surface runoff resulting from direct precipitation. Pond-1 was constructed/dug in an upland and is hydrologically isolated.
 - ii. Pond2 is an approximately 0.04-acre pond located southeast of Pond1. No discernible channel was noted, entering or exiting, during the site visit and per the delineation report the pond is supported by sheet flow retention of surface runoff resulting from direct precipitation. Pond-1 was constructed/dug in an upland and is hydrologically isolated.
- b. Describe aquatic resources and features within the review area identified as “generally not jurisdictional” in the *Rapanos* guidance. Include size of the aquatic resource or feature within the review area and describe how it was determined to be non-jurisdictional under the CWA based on the criteria listed in the guidance. N/A
- c. Describe aquatic resources and features identified within the review area as waste treatment systems, including treatment ponds or lagoons designed to meet the requirements of CWA. Include the size of the waste treatment system within the review area and describe how it was determined to be a waste treatment system. N/A
- d. Describe aquatic resources and features within the review area determined to be prior converted cropland in accordance with the 1993 regulations (reference 2.b.). Include the size of the aquatic resource or feature within the review area and describe how it was determined to be prior converted cropland. N/A
- e. Describe aquatic resources (i.e. lakes and ponds) within the review area, which do not have a nexus to interstate or foreign commerce, and prior to the January 2001 Supreme Court decision in “*SWANCC*,” would have been jurisdictional based solely on the “Migratory Bird Rule.” Include the size of the aquatic resource or feature, and how it was determined to be an “isolated water” in accordance with *SWANCC*. N/A
- f. Describe aquatic resources and features within the review area that were determined to be non-jurisdictional because they do not meet one or more categories of waters of the United States under the pre-2015 regulatory regime consistent with the Supreme Court’s decision in *Sackett* (e.g., tributaries that are non-relatively permanent waters; non-tidal wetlands that do not have a continuous surface connection to a jurisdictional water).

- i. Wet1 is an approximately 1.45-acre palustrine emergent wetland. This wetland's hydrology is supported by localized sheet flow which become entrapped in natural geomorphic, depressional features. Wet1 does not abut a RPW, as such it is not jurisdictional because it does not meet one or more categories of waters of the United States under the pre-2015 regulatory regime consistent with the Supreme Court's decision in *Sackett* (e.g., tributaries that are non-relatively permanent waters; non-tidal wetlands that do not have a continuous surface connection to a jurisdictional water).
- ii. Wet2 is an approximately 0.85-acre palustrine emergent wetland. This wetland's hydrology is supported by localized sheet flow which become entrapped in natural geomorphic, depressional features. Wet2 does not abut a RPW, as such it is not jurisdictional because it does not meet one or more categories of waters of the United States under the pre-2015 regulatory regime consistent with the Supreme Court's decision in *Sackett* (e.g., tributaries that are non-relatively permanent waters; non-tidal wetlands that do not have a continuous surface connection to a jurisdictional water).
- iii. Wet3 is an approximately 0.07-acre palustrine emergent wetland. This wetland's hydrology is supported by localized sheet flow which become entrapped in natural geomorphic, depressional features. Wet3 does not abut a RPW, as such it is not jurisdictional because it does not meet one or more categories of waters of the United States under the pre-2015 regulatory regime consistent with the Supreme Court's decision in *Sackett* (e.g., tributaries that are non-relatively permanent waters; non-tidal wetlands that do not have a continuous surface connection to a jurisdictional water).
- iv. Wet4 is an approximately 0.10-acre palustrine forested wetland. This wetland's hydrology is supported by localized sheet flow which become entrapped in natural geomorphic, depressional features. Wet4 does not abut a RPW, as such it is not jurisdictional because it does not meet one or more categories of waters of the United States under the pre-2015 regulatory regime consistent with the Supreme Court's decision in *Sackett* (e.g., tributaries that are non-relatively permanent waters; non-tidal wetlands that do not have a continuous surface connection to a jurisdictional water).
- v. Wet5 is an approximately 0.23-acre palustrine emergent wetland. This wetland's hydrology is supported by stormwater infrastructure to the west of the project area along Winfrey Street (represented as channel S2 {non-RPW}) and localized sheet flow which become entrapped in natural

- geomorphic, depressional features. Wet5 does not abut a RPW, as such it is not jurisdictional because it does not meet one or more categories of waters of the United States under the pre-2015 regulatory regime consistent with the Supreme Court's decision in *Sackett* (e.g., tributaries that are non-relatively permanent waters; non-tidal wetlands that do not have a continuous surface connection to a jurisdictional water).
- vi. Wet6 is an approximately 0.62-acre palustrine emergent wetland. This wetland's hydrology is supported by stormwater infrastructure to the west of the project area along Winfrey Street (represented as channel S2 {non-RPW}) and localized sheet flow which become entrapped in natural geomorphic, depressional features. Wet6 does not abut a RPW, as such it is not jurisdictional because it does not meet one or more categories of waters of the United States under the pre-2015 regulatory regime consistent with the Supreme Court's decision in *Sackett* (e.g., tributaries that are non-relatively permanent waters; non-tidal wetlands that do not have a continuous surface connection to a jurisdictional water).
- vii. Wet7 is an approximately 0.09-acre palustrine emergent wetland. This wetland's hydrology is supported localized sheet flow and possible seepage from Pond1 which become entrapped in natural geomorphic, depressional features. Wet7 does not abut a RPW, as such it is not jurisdictional because it does not meet one or more categories of waters of the United States under the pre-2015 regulatory regime consistent with the Supreme Court's decision in *Sackett* (e.g., tributaries that are non-relatively permanent waters; non-tidal wetlands that do not have a continuous surface connection to a jurisdictional water).
- viii. Wet8 is an approximately 0.94-acre palustrine emergent wetland. This wetland's hydrology is supported localized sheet flow which become entrapped in natural geomorphic, depressional features. This wetland channelizes at its western boundary to form a channel (represented as channel S1{non-RPW}). Wet8 does not abut a RPW, as such it is not jurisdictional because it does not meet one or more categories of waters of the United States under the pre-2015 regulatory regime consistent with the Supreme Court's decision in *Sackett* (e.g., tributaries that are non-relatively permanent waters; non-tidal wetlands that do not have a continuous surface connection to a jurisdictional water).
- ix. Wet9 is an approximately 0.18-acre palustrine emergent wetland. This wetland's hydrology is supported localized sheet flow which become entrapped in natural geomorphic, depressional features. Wet9 does not abut a RPW, as such it is not jurisdictional because it does not meet one or more categories of waters of the United States under the pre-2015

regulatory regime consistent with the Supreme Court's decision in *Sackett* (e.g., tributaries that are non-relatively permanent waters; non-tidal wetlands that do not have a continuous surface connection to a jurisdictional water).

- x. S1 is an approximately 204 linear-foot-long non-RPW. Upon review of the available data (historical aerial photography, USGS Topographic Maps, LiDAR, and the delineation report), this feature does not display Relative Permanent Flow, as such it is not jurisdictional because it does not meet one or more categories of waters of the United States under the pre-2015 regulatory regime consistent with the Supreme Court's decision in *Sackett* (e.g., tributaries that are non-relatively permanent waters; non-tidal wetlands that do not have a continuous surface connection to a jurisdictional water).
- xi. S2 is an approximately 25 linear-foot-long non-RPW. Upon review of the available data (historical aerial photography, USGS Topographic Maps, LiDAR, and the delineation report), this feature does not display Relative Permanent Flow, as such it is not jurisdictional because it does not meet one or more categories of waters of the United States under the pre-2015 regulatory regime consistent with the Supreme Court's decision in *Sackett* (e.g., tributaries that are non-relatively permanent waters; non-tidal wetlands that do not have a continuous surface connection to a jurisdictional water).

9. DATA SOURCES. List sources of data/information used in making determination. Include titles and dates of sources used and ensure that information referenced is available in the administrative record.

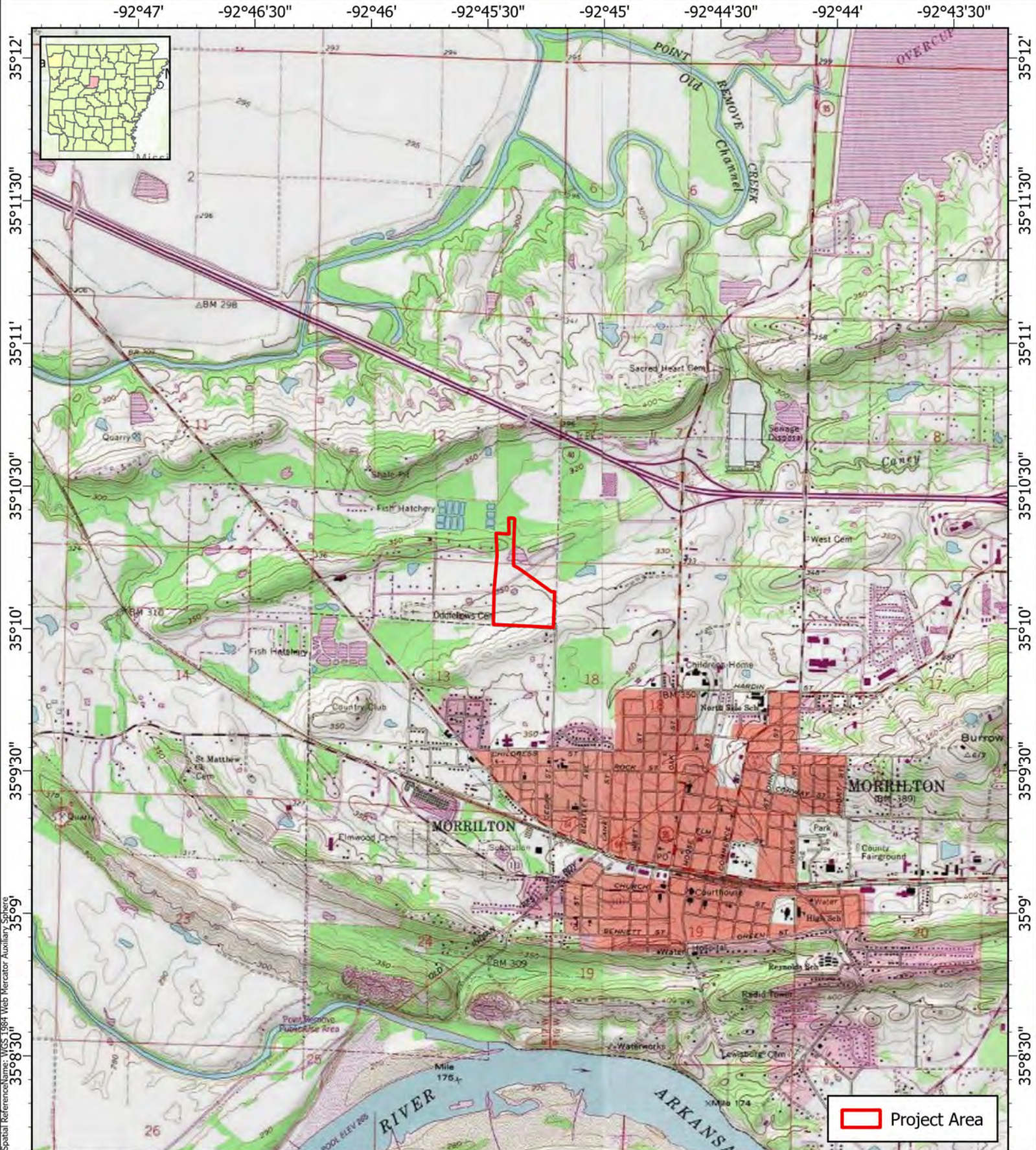
- a. Site Visit by Corps personnel was conducted on January 21, 2026
- b. Office review by Corps personnel was conducted on January 22, 2026
- c. Crafton Tull Delineation Report dated, April 07, 2025
- d. USGS Stream Stats accessed, January 22, 2026
- e. USGS topoView Morrilton West, AR 1:24K accessed, January 22, 2026
- f. USDA Natural Resources Conservation Service Web Soil Survey Conway County accessed, January 22, 2026
- g. NHD data accessed on National Regulatory Viewer accessed, January 22, 2026

CESWL-RD

SUBJECT: Pre-2015 Regulatory Regime Approved Jurisdictional Determination in Light of *Sackett v. EPA*, 143 S. Ct. 1322 (2023), SWL 2025-00172

10. OTHER SUPPORTING INFORMATION. N/A

11. NOTE: The structure and format of this MFR were developed in coordination with the EPA and Department of the Army. The MFR's structure and format may be subject to future modification or may be rescinded as needed to implement additional guidance from the agencies; however, the approved jurisdictional determination described herein is a final agency action.



Spatial Reference Name: WGS 1984 Web Mercator Auxiliary Sphere
35°08'30" 35°09' 35°10' 35°10'30" 35°11' 35°11'30" 35°12'



Crafton Tull
901 N. 47th Street, Suite 400, Rogers, AR 72756
479.631.4631 • 479.631.6224

May Hope Moose Site
CT Proj #: 25102600

Figure 1
Project Location & USGS Topographic Quad

ACTION NO. SWL 2025-00172
May Hope Moose
Approved Jurisdictional Determination
Sec. 12 & 13, T. 6 N., R. 17 W.
January 2026 Page 1 of 4



Spatial Reference Name: WGS 1984 Web Mercator Auxiliary Sphere
35°8'30\"/>



Crafton Tull

901 N. 47th Street, Suite 400, Rogers, AR 72756
479.636.4638 F 479.631.6224 F

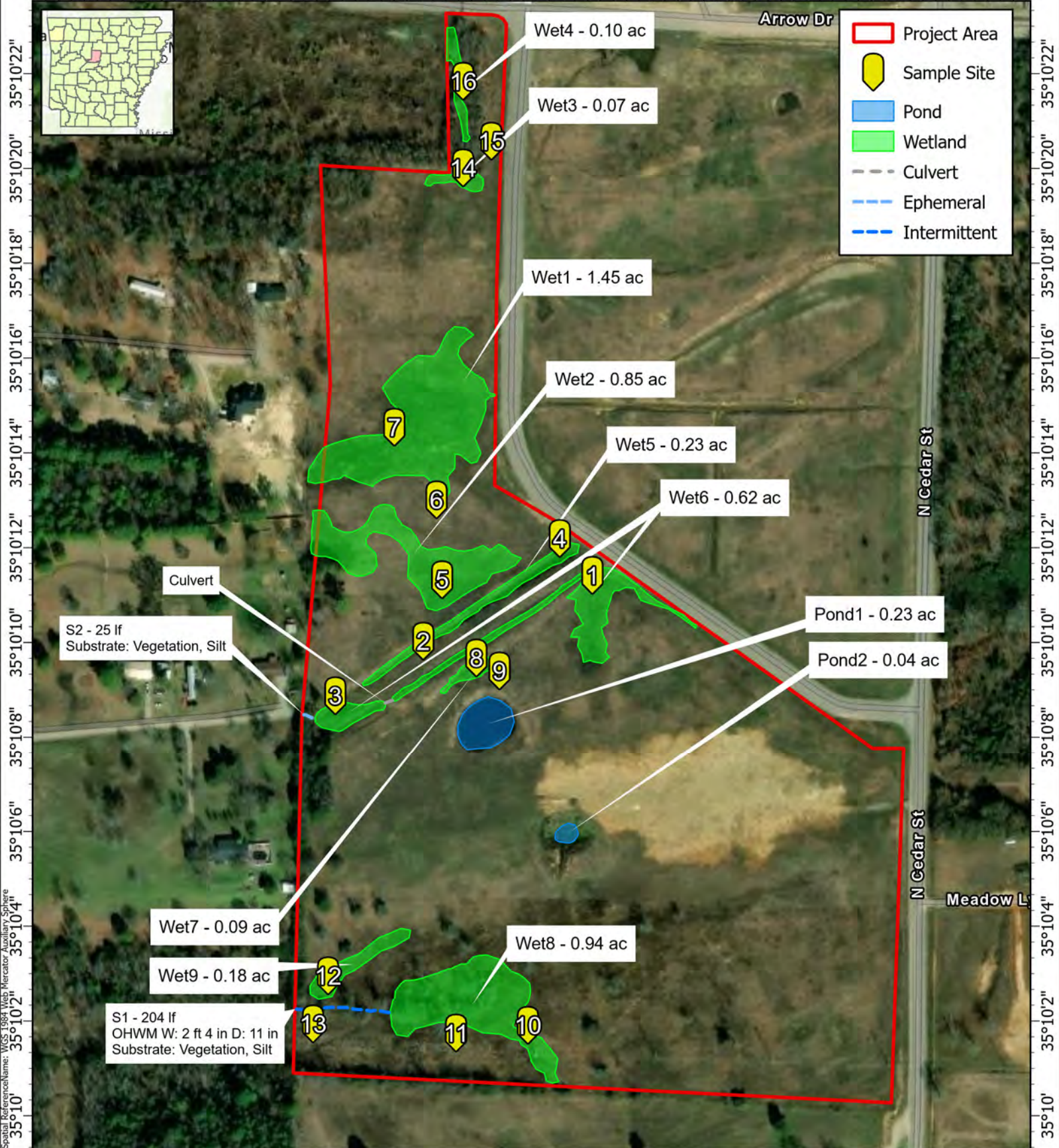
May Hope Moose Site

CT Proj #: 25102600

Figure 2
FEMA
National Flood Hazard

ACTION NO. SWL 2025-00172
May Hope Moose
Approved Jurisdictional Determination
Sec. 12 & 13, T. 6 N., R. 17 W.
January 2026 Page 2 of 4

-92°45'34" -92°45'32" -92°45'30" -92°45'28" -92°45'26" -92°45'24" -92°45'22" -92°45'20" -92°45'18" -92°45'16" -92°45'14" -92°45'12" -92°45'10"



Spatial Reference Name: WGS 1984 Web Mercator Auxiliary Sphere



Crafton Tull

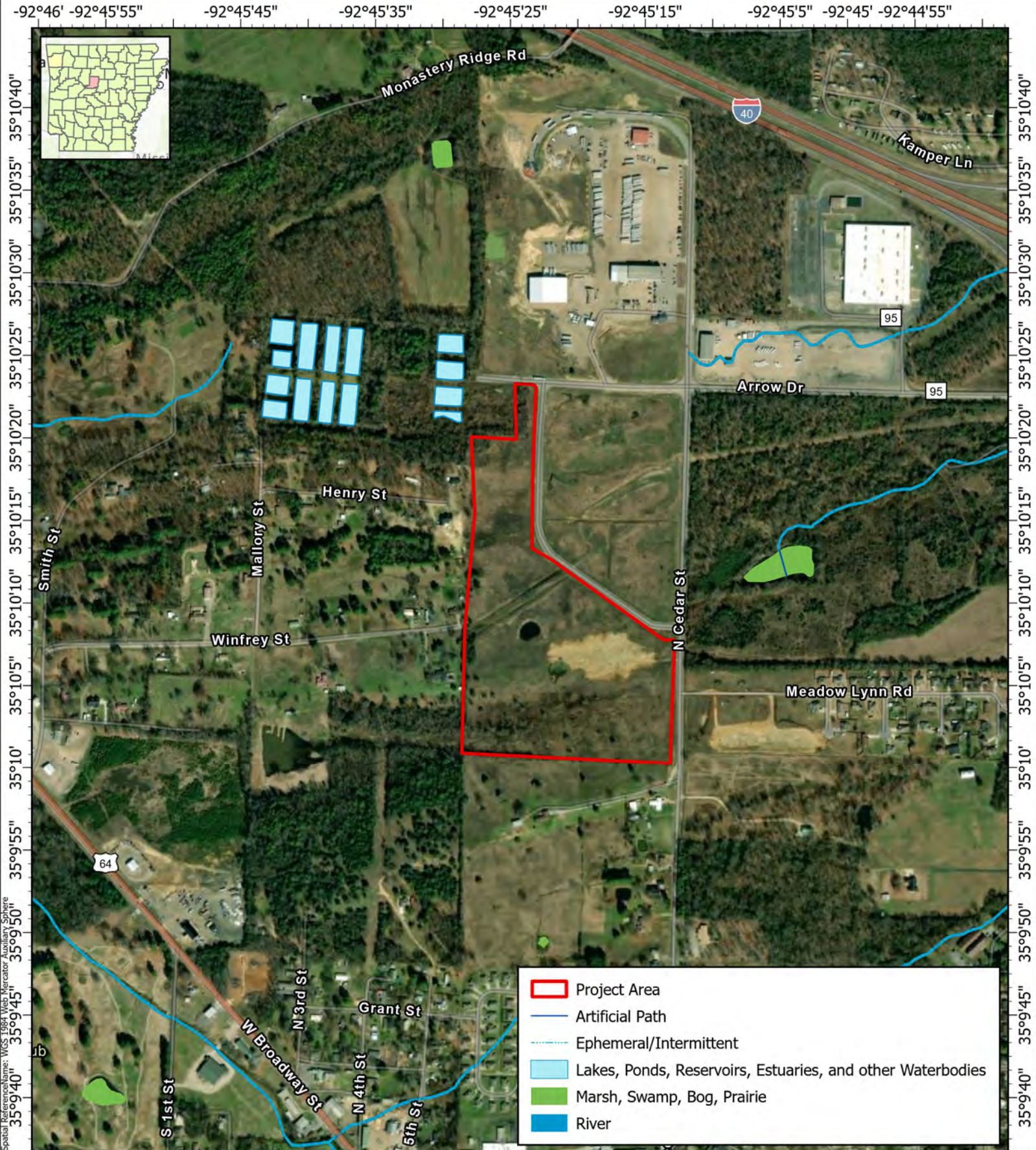
901 N. 47th Street, Suite 400, Rogers, AR 72756
479.636.4638 | 479.631.6224 f

May Hope Moose Site

CT Proj #: 25102600

Figure 6
WOTUS Exhibit

ACTION NO. SWL 2025-00172
May Hope Moose
Approved Jurisdictional Determination
Sec. 12 & 13, T. 6 N., R. 17 W.
January 2026 Page 3 of 4



- Project Area
- Artificial Path
- Ephemeral/Intermittent
- Lakes, Ponds, Reservoirs, Estuaries, and other Waterbodies
- Marsh, Swamp, Bog, Prairie
- River

Spatial Reference Name: WGS 1984 Web Mercator Auxiliary Sphere



Crafton Tull

901 N. 47th Street, Suite 400, Rogers, AR 72756
479.636.4638 | 479.631.6224 |

May Hope Moose Site

CT Proj #: 25102600

Figure 5

National Wetlands Inventory
&
National Hydrography Dataset

ACTION NO. SWL 2025-00172
May Hope Moose
Approved Jurisdictional Determination
Sec. 12 & 13, T. 6 N., R. 17 W.
January 2026 Page 4 of 4