

## **Appendix A**

### **Millwood Lake Master Plan and Shoreline Management Plan Scoping Report**

# **Millwood Lake Master Plan Revision Scoping Report**

U.S. Army Corps of Engineers



March 2021

# Millwood Lake Master Plan Revision

## *Scoping Report*

March 2021

*Prepared by:*

US Army Corps of  
Engineers

Little Rock District

P.O. Box 867

Little Rock, AR 72203

# Table of Contents

|  |           |
|--|-----------|
| <b>Section 1 Introduction .....</b>  | <b>1</b>  |
| 1.1 Overview.....  | 1         |
| 1.2 Purpose and Need for Master Plan Revision .....  | 2         |
| 1.3 Project Area .....   | 3         |
| 1.4 Purpose of this Report.....  | 3         |
| <b>Section 2 Scoping Process.....</b>  | <b>4</b>  |
| 2.1 Overview.....  | 4         |
| 2.2 Agency Scoping .....   | 5         |
| 2.3 Public Scoping .....   | 5         |
| Notification Database.....   | 6         |
| 2.3.1 Public Notification Activities .....   | 6         |
| 2.3.1.1 Direct Mail Notification .....   | 6         |
| 2.3.1.2 E-mail Notification.....   | 7         |
| 2.3.1.3 Project Website .....  | 7         |
| 2.3.1.4 Other Notification Activities.....   | 7         |
| 2.3.1.5 Website Statistics .....   | 7         |
| 2.4 Comments Received .....  | 8         |
| <b>Section 3 Summary of Scoping Comments .....</b>   | <b>10</b> |
| 3.1 Introduction.....  | 10        |
| 3.2 Summary of Comments .....  | 10        |
| 3.3 Comments Related to Question 1 & 2: How Would You Like to See Millwood Lake in 20 Years?<br>What Changes, if Any, Would You Like to See at the Lake? ..... | 12        |
| 3.4 Comments Related to Question 3: What About Millwood Lake is Most Important to You? .....   | 12        |
| 3.5 Comments Related to Question 4: What about Millwood Lake is Least Important to You?.....   | 12        |
| 3.6 Please provide your comments and suggestions on items to update the Millwood Lake SMP.....   | 13        |
| 3.7 Additional Comments .....  | 13        |
| 3.8 Agency Comments.....   | 14        |
| <b>Section 4 Next Steps: MP Revision Process .....</b>   | <b>15</b> |
| 4.1 Next Steps .....   | 15        |
| 4.2 Comments Related to Question 1 .....   | 15        |
| 4.3 Comments Related to Questions 2 and 3.....   | 16        |
| 4.4 Comments Related to Question 4.....  | 16        |

# List of Figures

Figure 2-1. Distribution of Postcard Notification by Zip Code ..... 9

# List of Tables

Table 3-1. Summary of Comments Received ..... 11

# Appendices

|                   |  |
|-------------------|--|
| <i>Appendix A</i> | Agencies and Organizations Notified of Scoping |
| <i>Appendix B</i> | Agency Notification                            |
| <i>Appendix C</i> | Notification Materials                         |
| <i>Appendix D</i> | Scoping Materials                              |
| <i>Appendix D</i> | Public Scoping Comments                        |
| <i>Appendix E</i> | Agency Scoping Comments                        |
| <i>Appendix F</i> | Media Coverage                                 |

# Acronyms

|      |  |
|------|--|
| ADA  | Americans with Disabilities Act            |
| CEQ  | Council on Environmental Quality           |
| CFR  | Code of Federal Regulations                |
| EA   | Environmental Assessment                   |
| EIS  | Environmental Impact Statement             |
| EP   | Engineer Pamphlet                          |
| ER   | Engineer Regulation                        |
| MP   | Master Plan                                |
| NEPA | National Environmental Policy Act          |
| NRRS | National Recreation Reservation<br>Service |
| OMP  | Operational Management Plan                |
| P.L. | Public Law                                 |
| SMP  | Shoreline Management Plan                  |
| URL  | uniform resource locator                   |

# Section 1 - Introduction

## 1.1 Overview

The United States Army Corps of Engineers (USACE) Little Rock District is proposing to revise the Millwood Lake Master Plan (MP) and Shoreline Management Plan (SMP). The MP guides the management of the government-owned and leased lands around the shoreline of the lake. The MP affects future management of natural resources and recreational opportunities to ensure the sustainability of Millwood Lake. The SMP is a comprehensive plan for managing the shoreline, including effects of human activities on the shoreline.

The MP is the guidance document that describes how the resources of the lake will be managed in the future and provides the vision for how the lake should look in the future. The MP does not address the details of how and where shoreline use permits may be issued. After the MP is revised and when funding becomes available, the Operational Management Plan (OMP) for the lake will be revised to be consistent with the goals identified in the MP and SMP.

The current Millwood Lake MP was developed over 40 years ago, and original estimates of future population and land use do not align with current demographics. The MP revision will re-classify the government lands around the lake based on environmental and socioeconomic considerations, public input, and an evaluation of past, present, and forecasted trends.

Preparation of and periodic revisions of an SMP are mandated by federal regulations found at Title 36 of the Code of Federal Regulations (CFR), Section 327.30, which also contains requirements for an SMP. The SMP regulates activities that may occur along the shoreline such as dock construction, improved access paths to docks, and vegetation management on the government lands and waters. The SMP for Millwood Lake establishes policy and furnishes guidelines for the protection and preservation of the desirable environmental characteristics of the shoreline while maintaining a balance between public and private shoreline uses.

The Millwood Lake SMP was last publicly reviewed and revised in 2006. It was administratively reviewed and revised with minor administrative changes in 2012; however, with an update to the MP, it is important that the SMP be updated to reflect current conditions and the management direction as described in the MP. Updates to the plan are expected to include a review of current management practices of the lake and to take advantage of current technologies.

USACE Engineer Regulation (ER) and Engineer Pamphlet (EP) 1130-2-550 with Change 7 and Change 5, respectively, dated January 30, 2013, establish guidance for developing MPs and OMPs for USACE Civil Works projects. MPs are required for fee-owned lands, in addition to civil works projects, for which USACE has administrative responsibility for management of natural and manmade resources. The primary goals of a

MP are to “prescribe an overall land use management plan, resource objectives, and associated design and management concepts” (EP 1130-2-550). MPs are reviewed every 5 years, and minor changes are made through supplements. A MP that has been excessively supplemented, is out-of-date, or does not serve its intended purpose due to changes in the project should be revised.

USACE will be preparing an environmental assessment (EA) in compliance with the National Environmental Policy Act (NEPA) of 1969 (as amended), the Council on Environmental Quality (CEQ) guidelines (40 Code of Federal Regulations [CFR] Parts 1500-1508), and ER 200-2-2 Procedures for Implementing NEPA. The EA will evaluate the potential environmental effects of the MP and SMP revisions. However, an environmental impact statement (EIS) would be prepared if significant environmental effects are identified during preparation of the EA as a result of the MP and SMP revisions.

## **1.2 Purpose and Need for Master Plan and Shoreline Management Plan Revisions**

The purpose of the project is to review and revise the Millwood Lake MP and SMP. Both plans strive to balance public use of federal lands and waters with the conservation and protection of natural resources for future generations. Updates of the MP and the SMP are needed for the following reasons.

### **For the MP:**

- Ensure accurate land classification and resource protection for future generations.
- The existing plan format and mapping technology is outdated and not compliant with current Master Plan format and technology requirements.
- Current Corps policies/regulations, budget processes, business line performance measures, and priorities are not reflected.
- Customer uses have remained similar, but trends, recreation equipment (i.e. RV size, vessel size, etc.), facility use (amp service, Wi-Fi, etc.), and service demands have shifted since approval of the last master plan in 1974; for example, there has been an increase in visitation, tourism, and adjacent development.
- Demands on fixed resources challenge the existing master plan.
- Partners and stakeholders are engaged with the Corps and seek to increase and sustain benefits provided by the lake.
- Identify issues related to ecosystem stewardship including vegetation and siltation management.



**For the SMP:**

- Current technology allows for more accurate representation of shoreline allocations.
- Current Corps policies/regulations, budget processes, business line performance measures, and priorities are not reflected.
- Shoreline Management and private development have resulted in environmental and management issues, causing sustainability concerns.
- Partners are increasingly concerned with management of lake resources and impacts to environmental quality.

## 1.3 Project Area

The Millwood Lake Civil Works project on the Little River is located 16 river miles above its confluence with the Red River, about seven miles east of Ashdown, AR. Millwood Lake was authorized for construction by the Flood Control Act approved 3 July 1958. At conservation pool, the lake has 37,617 acres of land and water with 92 miles of boundary line. The lake provides many recreational opportunities, along with fish and wildlife habitat.

Millwood Lake located in the southwest corner of Arkansas and provides many recreational opportunities. Its 20,000 acres of inundated timber provide exceptional fish habitat for the wide variety of fish. Millwood provides some of the best fishing opportunities and attracts anglers from across the country. Millwood is the natural home to many American alligators that can be spotted in the waters and shorelines of recreation areas. The lake and its surrounding environment make it one of Arkansas's best birding locations. Birders from across the nation come to Millwood to get a glimpse of the over 300 bird species making appearances throughout the year. The U.S. Army Corps of Engineers manages 12 recreation areas around the lake and provides oversight to 4 leased recreation areas: Jack's Isle, Millwood State Park, Patterson Shoals, and Yarborough Landing.

## 1.4 Purpose of this Report

The following report summarizes the public participation process for, and the public comments resulting from, the Millwood Lake MP and SMP Revision public scoping comment period. "Scoping" is the process of determining the scope, focus, and content of a NEPA document. For a planning process such as the MP and SMP revision, the scoping process was also used as an opportunity to get input from the public and agencies about the vision for the MP update and the issues that the MP should address where possible.

# Section 2 - Scoping Process

## 2.1 Overview

In accordance with NEPA and ER 200-2-2, USACE initiated the environmental compliance and review process for the Millwood Lake MP and SMP revision project. An EA will be prepared to identify potential direct, indirect, and cumulative impacts related to implementation of the MP and SMP. The process of determining the scope, focus, and content of a NEPA document is known as “scoping” and this occurs at the start of the process. Scoping is a useful tool to obtain information from the public and governmental agencies in order to help set the parameters of issues to focus on and analyze.

In March of 2020, a global coronavirus pandemic (COVID-19) was declared. This prompted a lot of changes in the workforce, including USACE implementing telework schedules to keep employees safe and social distanced. In addition, and due to the evolving Federal, State, and Local policies designed to address the spread of COVID-19, the project delivery team (PDT) determined that no in-person agency or public scoping workshops would occur until the threat of the virus subsided. As an alternative, the Millwood Master Plan and Shoreline Management Plan Revision website was created to be the primary source of information during this time. Website information was provided through various sources, such as notification postcards, news releases, agency scoping letters, and media outreach, for individuals to visit the project website to find out more information about the process to update the Master Plan and Shoreline Management Plan of Millwood Lake; to solicit comments for Scoping; and to communicate to the public of the reason behind changing the traditional USACE scoping process in response to the global pandemic. As part of the initial phase of the environmental process, an extended public scoping comment period was held between November 16, 2020, and December 31, 2020, to gather agency and public comments on the MP and SMP revision process and issues that should be examined as part of the environmental analysis. The extension on the comment period was one response to the change in the traditional USACE scoping process due to the pandemic.

In particular, the scoping process was used as an opportunity to get input from the public and agencies about the vision for the MP and SMP update and the issues that the MP and SMP should address. When people visited the Millwood Lake Master Plan update website, they were encouraged to provide input by completing a comment form that asked for responses to specific questions in addition to soliciting for general comments about the plan and the environmental review. The questions included:

- How would you like to see Millwood Lake in 20 years?
- What changes, if any, would you like to see at the lake?
- What about Millwood Lake is most important to you?
- What about Millwood Lake is least important to you?
- Please provide your comments and suggestions on items to update the Millwood Lake SMP.

- Additional Comments on the MP or SMP revision or about issues that should be studied?

USACE published notice of the scoping period through an email blast, a direct mail postcard, press releases, and agency notification letters. The postcard notice and email blast were sent to landowners adjacent to USACE-owned lands around the lake, holders of fishing permits purchased in Arkansas who's listed zip code is within 7 miles of Millwood Lake, dock permit holders, dock builders, timber buyers, and those who held reservations to camp at Millwood Lake campgrounds within the 2019 recreational season. Postcards were sent to those for whom only a postal address was available; all others received the email blast. Agency coordination letters were sent to potentially interested agencies.

## 2.2 Agency Scoping

Agencies were invited to participate in the scoping process and to provide input on the vision for the Millwood Lake MP and SMP on issues that should be addressed through the environmental assessment. A letter was sent on November 10, 2020, to 19 agencies (Appendix B) providing notification of the upcoming agency scoping comment period and links to the project website where more information could be found.

## 2.3 Public Scoping

Public scoping is an important element in the process of determining the focus and content of a NEPA document. Scoping helps to identify the range of actions, alternatives, environmental effects, and mitigation measures to be analyzed in depth and helps eliminate from detailed study those issues that are not pertinent to the final decision. Scoping is an effective way to bring together and address the concerns of the public, agencies, and other interested parties.

Notification of the scoping comment period was completed via several forms of media as described further in this section.

### Notification Database

USACE maintains a database of stakeholder groups interested in activities around Millwood Lake, which includes dock builders and timber buyers. Other databases maintained by USACE include shoreline use permit holders, and boat slip owners. In addition, USACE developed a list of adjacent property owners based on the databases maintained by the county assessors of the surrounding counties. USACE also compiled a list of parties who had made campground reservations through the Recreation 1 Stop (R1S) reservation system for camping visits at Millwood Lake during the 2019 camping season. Finally, USACE obtained the database of holders of fishing permits purchased

in Arkansas whose listed zip code is within 7 miles of Millwood Lake. These combined databases included 1,154 email addresses and 9,415 postal addresses, to which notification was sent about the public scoping comment period and website information.

## **2.3.1 Public Notification Activities**

Strategies to engage the public to participate in the MP and SMP visioning and environmental review processes included (1) making it easy to participate, (2) providing easy-to-understand information that helps people provide informed scoping comments, and (3) ensuring that stakeholders are aware of the planning process and understand how public input will be used. In addition, and as stated earlier, it was important to USACE to communicate to the public why the traditional scoping process had changed during the pandemic—to protect the public and USACE employees and promote social distancing while still achieving the goal of soliciting for comments during the scoping comment period.

Each notification medium was assigned a unique short Uniform Resource Locator (URL) to direct recipients to the project website for more information. This allowed USACE to track how people heard about the scoping period and the master planning and shoreline Management planning processes and evaluate the effectiveness of various notification methods for future projects.

### **2.3.1.1 Direct Mail Notification**

On November 16, a total of 9,415 postcards were mailed to adjacent property owners, private boat slip owners, stakeholders, and holders of fishing permits purchased in Arkansas whose listed zip code is within 7 miles of Millwood Lake. The distribution of postcard recipients is illustrated in Figure 2-1 by zip code. Of these, 1,237 were classified as invalid addresses.

The postcard notification included information on both the MP and SMP revision process, how to provide comments, the comment period closing date, and the project website address. The direct mail postcard is included in Appendix C. The postcard resulted in 42 visits to the project website during the comment period.

### **2.3.1.2 E-mail Notification**

An e-mail blast was sent on November 16, 2020, to approximately 1,154 email addresses. These emails were sent to adjacent property owners, private boat slip owners, boat dock builders, stakeholders, and those listed on the RIS reservation list for whom valid email addresses were available. The information in the email blast was the same as the information on the postcard notification. The email blast resulted in 26 visits to the project website during the comment period.

### **2.3.1.3 Project Website**

A project website, <https://www.swl.usace.army.mil/Missions/Planning/Millwood-Lake-Master-Plan-Revision/>, was developed for both the MP and SMP revision project. The site included information about Millwood Lake, the MP and SMP revision process, and the scoping process. Information on the scoping process included, how to submit comments and who to contact for more information. Between November 16, and December 31, 2020, 126 people visited the project website.

### **2.3.1.4 Other Notification Activities**

To maximize the coverage of the outreach effort for the scoping period, a media release was sent to local media outlets using the Southwestern Division, Little Rock District, Millwood Media distribution list on November 16, 2020. A copy of the press release is in Appendix C, and copies of the media coverage are in Appendix H.

### **2.3.1.5 Website Statistics**

Each type of media notification (e.g. display ads, postcard, email, etc.) provided a different URL or specific web addresses to the project website. This was done in order to gather information on how people found out about and accessed the project website. The following is a list of the number of people who accessed the website organized by the media notification web address used. In total, the specific project web addresses were used 1,410 times.

- 2.3.1.5.1 First news release and newspaper display ads: 32
- 2.3.1.5.2 Fact Sheet: 5
- 2.3.1.5.3 Email blast: 26
- 2.3.1.5.4 Postcard notification: 42
- 2.3.1.5.5 Agency letter: 12
- 2.3.1.5.6 Comment cards: 6

## 2.4 Comments Received

The public scoping comment period was from November 16 to December 31, 2020, which provided a 45-day comment period. All interested people were provided opportunities to submit comments on the public website comment form as well as via email, fax, or mail.

In total, approximately 42 comment submittals (letters, emails, comment cards, or oral comments) from members of the public and 3 comment submittals from agencies were received by the end of the comment period. Copies of all the public comments submitted during the comment period are included in Appendix E. Copies of agency submittals are included in Appendix F.

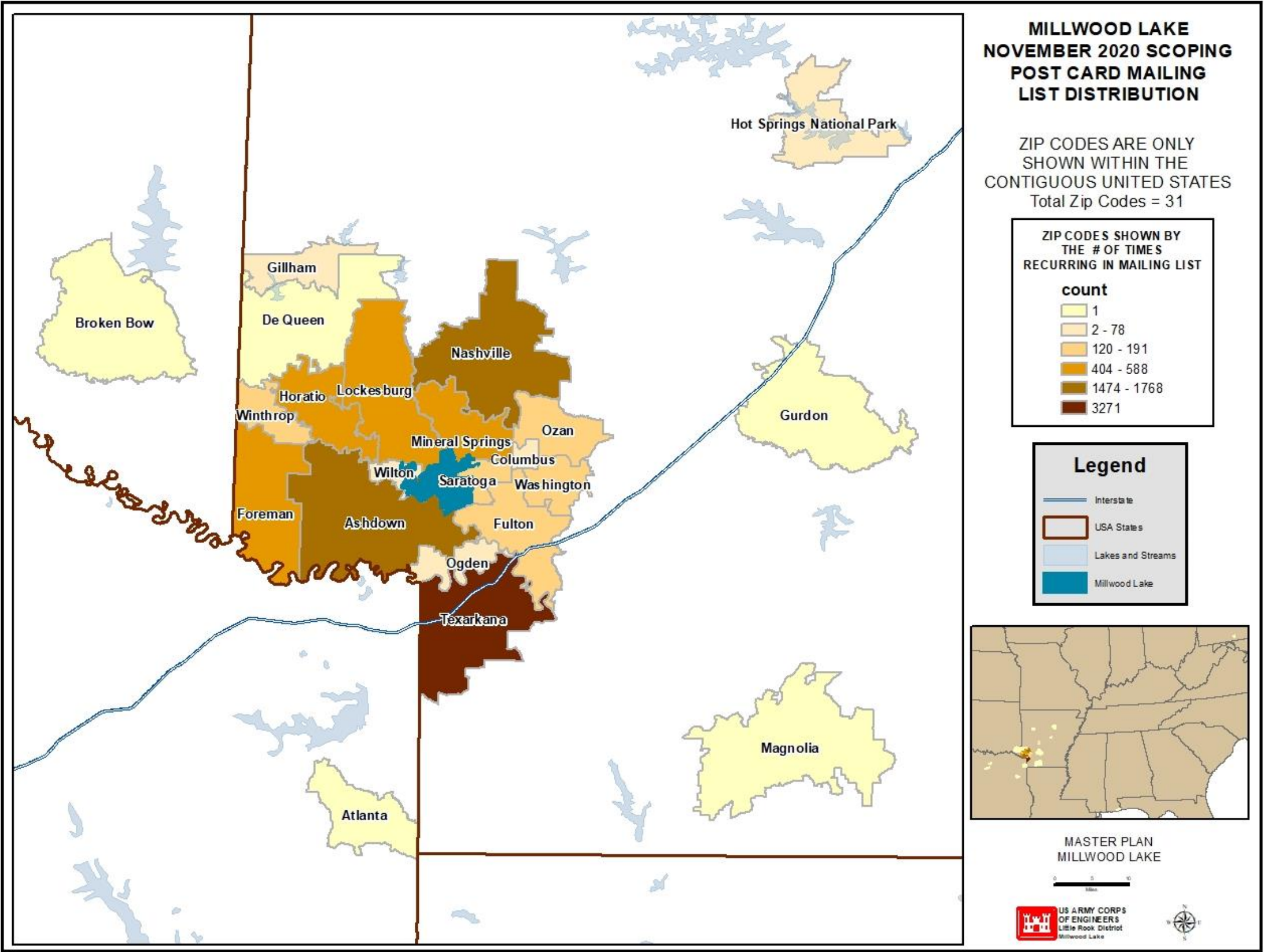


Figure 2-1. Distribution of Postcard Notification by Zip Code



## Section 3 - Summary of Scoping Comments

### 3.1 Introduction

USACE accepted comments on the Millwood Lake MP Revision throughout the entire scoping period from November 16 through December 31, 2020. Agencies, community groups, members of the public, elected officials, and other interested parties submitted 45 letters, e-mails, and comment cards during this period. The summary table (Table 3-1) provides a tally of the topics discussed in the comments.

It should be noted that the combined numbers of comments listed in the following subsections and the summary table will be greater than the total number of comment submissions because most people discussed multiple topics in their submission. Topics covered in the comments included general comments about the plan and the environmental review as well as answers to the following questions:

- How would you like to see Millwood Lake in 20 years?  
What Changes, if any, would you like to see at the lake?
- What about Millwood Lake is most important to you?
- What is least important to you?
- Please provide your comments and suggestions on items to update the Millwood Lake SMP.
- Additional Comments on the MP or SMP revision or about issues that should be studied?

This section contains a summary of comments received during the scoping period. The actual comments may be found in Appendices E and F.

### 3.2 Summary of Comments

All comments were reviewed and categorized. The full text of each comment is included in Appendices E (public comments) and F (agency comments).

Table 3-1 provides a summary of the comments received during the scoping comment period. While this table does not include every comment received, it provides a general summary of the topics most frequently submitted during the comment period. A more detailed overview of comments follows in Sections 3.3 through 3.9. Several comments were not related to the plan or the environmental review, and these are included in the summary of additional comments in Section 3.7. The full text of all written comments submitted by members of the public or stakeholder organizations is provided in Appendix E. Agency comments are included in Appendix F.



**Table 3-1. Summary of Comments Received**

| <b>How would you like to see Millwood Lake in 20 years?</b>  |  |
|--|--|
| <ul style="list-style-type: none"> <li>▪ Lake Elevation (20)</li> <li>▪ Improve Fishing/Habitat/Species (14)</li> <li>▪ Increase Vegetation Management (12)</li> <li>▪ Dredge the Lake (7)</li> <li>▪ Increase Hiking/Multi-use Trails (1)</li> <li>▪ Campgrounds/Camping (1)</li> <li>▪ Improvements to Recreation Areas (3)</li> </ul> | <ul style="list-style-type: none"> <li>▪ No Changes (Same as Today/Preserved) (2)</li> <li>▪ Family Friendly (1)</li> <li>▪ More Shoreline/Erosion Protection (1)</li> <li>▪ Additional Marinas (1)</li> <li>▪ Increase Collaboration with Residents (1)</li> <li>▪ More ADA Facilities/Areas (1)</li> </ul> |
| <b>What Changes, if any, would you like to see at the lake?</b>  |  |
| <ul style="list-style-type: none"> <li>▪ Fishing (15)</li> <li>▪ Improve Navigation/Hazard Buoys (10)</li> <li>▪ Accessibility - Boat Ramps/Campgrounds (3)</li> </ul>   | <ul style="list-style-type: none"> <li>▪ Facility Improvements (2)</li> <li>▪ Additional Marina (1)</li> </ul>   |
| <b>What is most important to you?</b>  |  |
| <ul style="list-style-type: none"> <li>▪ Fishing (25)</li> <li>▪ Camping (4)</li> <li>▪ Natural Beauty/Pristine/ Peaceful (2)</li> <li>▪ Clean Water/Water Quality (2)</li> </ul>  | <ul style="list-style-type: none"> <li>▪ Public accessibility Ramps/ Campgrounds (1)</li> <li>▪ Boating (1)</li> <li>▪ Improve Access to Lake/Docks (1)</li> <li>▪ Hunting (1)</li> </ul>  |
| <b>What is Least Important to you?</b>   |  |
| <ul style="list-style-type: none"> <li>▪ Hunting (3)</li> <li>▪ Camping/Campgrounds (1)</li> </ul>   | <ul style="list-style-type: none"> <li>▪ Restrictions on Shoreline Maintenance (1)</li> </ul>  |
| <b>Comment Suggestions for the SMP update</b>  |  |
| <ul style="list-style-type: none"> <li>▪ Improve vegetation for Spawning (4)</li> <li>▪ Remove Invasive Plant Species (2)</li> </ul>   | <ul style="list-style-type: none"> <li>▪ Erosion Control (2)</li> <li>▪ More Boat Docks/Marinas (2)</li> </ul>   |
| <b>Additional Comments</b>   |  |
| <ul style="list-style-type: none"> <li>▪ Re-open Closed Areas (3)</li> <li>▪ More Access Points (2)</li> <li>▪ More Shoreline/ Erosion Protection (1)</li> <li>▪ Natural Beauty/ Pristine/Peaceful (1)</li> </ul>  | <ul style="list-style-type: none"> <li>▪ Improve Access to the Lake/Dock (1)</li> <li>▪ Fishing (1)</li> <li>▪ Remove Invasive Species (1)</li> <li>▪ Increase Wildlife Management Areas (1)</li> </ul>  |

### **3.3 Comments Related to Questions 1 and 2:**

#### **How Would You Like to See Millwood Lake in 20 Years and What Changes Would You Like to See at the Lake?**

The most frequent response to Question 1 was that people want to see improved lake level management on Millwood Lake over the next 20 years (Table 3-1). 20 respondents commented on either raising or lowering the elevation in conjunction with an emphasis on improving fishing habitat/and or species (14 respondents). 15 respondents indicated that they would like to see management practices focus on fishing on Millwood. Another common response was to increase vegetation management on Millwood (12 respondents). This response was also mentioned in relation to the lake elevation changes. In addition, 10 respondents indicated a need for improved navigation buoys on the river channel and hazard buoys on the Lake. A total of seven respondents mentioned they would like to see dredging around the lake. It is important to note lake elevation concern is not within the scope of the Master Plan or Shoreline Management Plan, but instead is within the intent of the Water Control Plan. This scoping report will not address water/lake levels, nor will the MP, SMP, or accompanying EA.

### **3.4 Comments Related to Question 3:**

#### **What About Millwood Lake is Most Important to You?**

The top response to what is most important about the lake was fishing on Millwood Lake (Table 3-1). There was a total of 25 respondents indicating this interest. The second most common response to this question was camping with four respondents indicating this as a priority. Of the comments, there were two respondents who indicated that clean water and water quality were most important to them and two respondents said that the natural beauty and peacefulness of Millwood Lake is most important to them.

### **3.5 Comments Related to Question 4:**

#### **What about Millwood Lake is Least Important to You?**

The most frequent response to what is least important about the lake included hunting (three comments) followed by one response for camping and campgrounds and one response for shoreline maintenance (Table 3-1). Most of these responses were from people who desired the primary focus for Millwood to be on fishing and increasing fishing habitat on Millwood Lake. It is important to note that this question received fewer responses than any other question on the comment form.

## 3.6 Comments Related to Question 5

### Comment Suggestions for the SMP Update.

Comments provided in this section are consistent with responses provided in the first three questions. The most common suggestion for this section includes four comments to improve vegetation for fish spawning to increase the fishing population on Millwood Lake. Additionally, two respondents would like to see more invasive species removed from the lake. This response coincides with how people would like to see the lake in 20 years with improved fishing/habitat/species and increased vegetation management.

## 3.7 Additional Comments – Question 6:

Comments contained in letters or emails that did not directly relate to Questions 1, 2, 3, or 4 are summarized in this section. Many commenters provided most of their input into the first two question dialog boxes on the online comment form which at times included specific requests and did not conform to the typical responses. The two most common responses in this section include suggestions to reopen previously closed areas (three comments), and two comments requesting more access points around the lake.

There were also several comments regarding specific areas around the lake throughout the comment form. The number of times a comment was raised by a different respondent is noted in parenthesis.

- Install steps to river downstream from the spillway parking lot
- Improve ramps and ADA fishing piers: Saratoga, Beard's Bluff Park
- Implement erosion control methods around Saratoga landing
- Repair Pier at Yarborough Landing
- Dredge around boat ramps including Saratoga
- Install boat run from Yarborough landing to the main lake
- Sand Yarborough Landing to prevent slipping
- Repair boat ramps at Paraloma, Beard's Bluff, and Saratoga (2)
- Install dock at Cottonshed
- Reopen Paraloma recreation area
- Grade East Run Road by the River
- Install buoys or poles along the Little River (2)
- Repair damaged telephone markers around Highline to the Little Gas Line boat lanes.
- Phone Service near Whites Cliffs
- Weigh-in fish facility at Yarborough Landing similar to Pendleton ramp.

## 3.8 Agency Comments

Three agencies submitted comments during the scoping period. The official agency letters and emails are included in Appendix F. Agencies that commented during the comment period included:

- Arkansas Department of Environmental Quality
- FEMA – Region 6
- U.S. Fish and Wildlife Service

Common input at this stage in the review provided general topics to be mindful of during the update process. All responding agencies requested to continue to be informed throughout the update process and indicated their interest in reviewing a draft document before it goes out for final review and approval.

Agency comments are summarized in this section. The full text of the agency comments is available in Appendix F. Comments not covered in earlier sections or regarding specific areas of the lake include:

- Recommendation USACE take all necessary steps to prevent or minimize erosion of materials and soils into surface waters. (ADEQ)
- Proposed Activities should include measures to protect both the water quality and designated use of the waterways. (ADEQ)
- Ensure coordination with local floodplain administrator and gather the proper floodplain permits prior to work. (FEMA)
- Any proposed changes that would modify the release volumes and schedules or change the existing inundation in upstream tributaries would need to account for possible affects to listed species. (USFWS)
- Lake management modifications that would result in negative or positive effects to federally listed or threatened or endangered species should be in consultation with the U.S. Fish and Wildlife Service Per SEC 7 of the Endangered Species Act. (USFWS)

## Section 4 Next Steps: MP & SMP Revision Process

The purpose of scoping is to provide an opportunity for agencies and the public to comment on the purpose and need, the range of alternatives proposed for analysis, and to help the project proponent identify issues that should be evaluated in the NEPA document. USACE also used the public scoping process as an opportunity to gain feedback from the public regarding the scope of the MP and SMP revision.

### 4.1 Next Steps

The six questions were designed to help USACE elicit input not only on elements of the NEPA process but also on topics of interest to the public and agencies that may be revised or updated in the new MP or SMP. USACE will continue to work closely with the public, agencies, and stakeholder groups to address issues identified through scoping as the draft MP and SMP are developed and evaluated. An EA will be prepared to evaluate potential impacts from changes in both the MP and SMP. However, an EIS would be prepared if significant environmental effects are identified during preparation of the EA as a result of the MP or SMP revisions. The draft MP, draft SMP, and the EA will be made available for review and comment. It is anticipated that this public review would occur in the summer of 2021.

Individual responses to comments provided during scoping are not developed; rather, the draft MP and SMP revisions that will be provided for review and comment will address comments received in a global manner. Where consistent with the purpose of a MP and SMP and where possible under the planning mechanisms available for a MP and SMP, USACE will incorporate the feedback and suggestions provided through the scoping comments.

### 4.2 Comments Related to Question 1 & 2

Question 1 *“How would you like to see Millwood Lake in 20 years?”* and question 2 *“What changes, if any, would you like to see at the lake?”* provides direction to USACE on both the MP and SMP vision and on issues of concern to lake users and stakeholders that should be evaluated through the NEPA process. Continued focus on fishing, improving fish habitat, vegetation management, navigation/ hazard buoys, siltation, and improving recreational areas ranked highly among the concerns raised in response to this two-part question. These resource categories will be addressed in the draft MP and SMP revisions, and potential impacts to these resource categories will be evaluated in the NEPA document.

## 4.3 Comments Related to Questions 3 and 4

Question 3 “*What about Millwood Lake is most important to you?*” and Question 4 “*What is least important to you?*” invited respondents to prioritize issues, features, or qualities of the lake experience that were important. This question provides insight both into issues that should be addressed in the MP and SMP revisions and that should be evaluated in the NEPA document. Top concerns were related to fishing, camping, and natural beauty, and peacefulness of the lake. The top concern related to what was least important was hunting.

## 4.4 Comments Related to Question 5

Question 4 “*Additional comments on the Master Plan revision or about issues that should be studied?*” helps USACE identify additional priorities for action, whether through the MP revision or other means. It is important to note that much of the input on the comment cards were provided within the first two question blocks on the online comment form. Input that was provided in this section included a heavy focus on fishing and improving fishing habitat through better vegetation management practices, dredging due to heavy siltation, reopening closed recreational areas, and areas to access Millwood Lake were topics people would like to be taken into consideration.

# Appendices

|                   |  |
|-------------------|--|
| <i>Appendix A</i> | Agencies and Organizations Notified of Scoping |
| <i>Appendix B</i> | Agency Notification                            |
| <i>Appendix C</i> | Notification Materials                         |
|                   | Direct Mail                                    |
|                   | Postcard                                       |
|                   | Email Blast                                    |
|                   | Press Releases                                 |
| <i>Appendix D</i> | Scoping Materials                              |
|                   | Scoping Fact                                   |
|                   | Sheet Comment Card                             |
| <i>Appendix E</i> | Public Scoping<br>Comments                     |
| <i>Appendix F</i> | Agency Scoping<br>Comments                     |
| <i>Appendix G</i> | Media Coverage                                 |

## Appendix A

### Agencies and Organizations Notified of Scoping



## Agencies

- Arkansas Forestry Commission, Assistant State Forester
- Arkansas Game and Fish Commission, Director
- Arkansas Natural Heritage Commission, Director
- Arkansas Historic Preservation Program, Director
- Arkansas Natural Resources Commission, Executive Director
- Arkansas Department of Parks and Tourism, Director
- Arkansas Department of Energy and Environment, Secretary
- Cultural & Historic Preservation Office, Director Environmental Protection Agency, Region 6 Environmental Review Coordinator
- Department of finance and Administration, Arkansas State Clearing House
- Environmental Protection Agency, Region 6 NEPA Specialist
- FEMA, Region 6 Administrator
- Shawnee Tribe
- The Nature Conservancy, State Director
- Tribal Historic Preservation Office, The Osage Nation, Director
- Tribal Historic Preservation Office, The Quapaw Tribe of Indians
- Tribal Historic Preservation Office, Cherokee Nation, Special Projects Officer,
- U.S. Department of Agriculture, Natural Resources Conservation Service, State Conservationist
- U.S. Fish and Wildlife Service, Regional Director
- U.S. Fish and Wildlife Service, Arkansas Field Office, Field Supervisor
- U.S. Geological Survey, Southeast Region Hydrologist
- U.S. Department of the Interior, Office of Environmental Policy and Compliance, Regional Environmental Officer
- U.S. Department of the Interior, Office of Environmental Policy and Compliance, Program Analyst

# Organizations

## **Dock Builders**

- Williamson Boat Docks Inc.
- Super Duty Docks & Lifts
- Deck, Docks & More Inc.
- Larry Diggs Construction Inc.
- Justin Simmons Construction LLC

## **Timber Buyers**

- Domtar Ind.
- Weyerhaeuser
- Little River Hardwoods
- Millwood Corporation
- Hess Lumber Company Lovewell Timber Harvest
- Huber Engineered Woods LLC
- International Paper
- Magnolia Pulpwood Company
- Anthony Timberlands
- Prescott Land and Timber Co.

## Appendix B

### Agency Notification



DEPARTMENT OF THE ARMY  
LITTLE ROCK DISTRICT, CORPS OF ENGINEERS  
POST OFFICE BOX 867  
LITTLE ROCK, ARKANSAS 72203-0867  
[www.swl.usace.army.mil/](http://www.swl.usace.army.mil/)

November 10, 2020

CESWL-PM

Ms. Nekole Allogood  
Director  
Deleware Nation  
Cultural & Historic Preservation Office  
P.O. Box 825  
Anadarko, OK 73005

Dear Ms. Allogood:

The U.S. Army Corps of Engineers (USACE), Little Rock District, is revising the Millwood Lake Master Plan, last updated in 1964, and the Shoreline Management Plan, which was last updated in 2012. Pursuant to the National Environmental Policy Act (NEPA) of 1969 (P.L. 91-190) Environmental Assessments (EA) of potential impacts of both draft plans will also be prepared. Your agency is invited to provide comments and input to assist USACE with development of the Master Plan and the Shoreline Management Plan, and with preparation of the EA's under NEPA.

The Master Plan guides the management of government-owned and leased lands around the lake. Decisions about land use classifications in the Master Plan may affect future management of natural resources and recreational opportunities. The purpose of the update is to bring the Master Plan into compliance with current USACE policies and regulations, identify usage trends and customer needs, and balance shoreline uses with natural resource management. Updates to the plan are expected to reflect current and anticipated development around the lake and to take advantage of current technologies.

The Shoreline Management Plan establishes policy and furnishes guidelines for the protection and preservation of the desirable environmental characteristics of the shoreline while maintaining a balance between public and private shoreline uses. The Shoreline Management Plan main objectives are to manage and protect the shoreline, to establish and maintain acceptable fish and wildlife habitat, aesthetic quality and natural environment conditions and to promote the safe and healthful use of the lake and shoreline for recreational purposes by all Americans. Updates to the plan are expected to review current management practices of the lake and to take advantage of current technologies.

Your agency has been identified by the USACE as one that may have an interest in this project. The land classifications established through the Master Plan may have important implications for surrounding residential communities, businesses, parks, and natural areas. The private use of government owned and leased lands established through the updated Shoreline Management Plan may have important implications for surrounding residential communities, businesses, parks, and natural areas. As a result, USACE is requesting your input and agency's expertise to assist in the development of the updated Master and Shoreline

Management Plans and the preparation of Environmental Assessments as required by NEPA and the USACE Engineer Regulation ER 200-2-2 "Procedures for Implementing NEPA".

Input from the agencies and the general public will help define the needed revisions to both draft plans, which is scheduled for public review in the summer of 2021.

Due to the evolving Federal, State, and Local policies designed to address the spread of COVID-19, the Corps will not hold our traditional public and agency Scoping workshops. We invite you to visit our website, <https://go.usa.gov/x7Wns>, to provide comments/suggestions for the Master and Shoreline Management Plan updates.

The planning process will include an analysis of potential effects on the natural and social environment, including fish and wildlife, recreational opportunities, economics, land use, cultural and historic resources, aesthetics, and public health and safety. USACE is involving agencies and the public in the planning process for both the Master and Shoreline Management Plan updates and the NEPA analysis.

In addition to providing comments/suggestions to the above website, your agency may also submit comments via mail, email, or fax with attention to: USACE, Little Rock District, ATTN: NRM Planner, P.O. Box 867, Little Rock, AR 72203, Fax: (501) 324-6230, Email: [CESWL-MillwoodLakeMPandSMPRevision@usace.army.mil](mailto:CESWL-MillwoodLakeMPandSMPRevision@usace.army.mil), Website: <https://go.usa.gov/x7Wns>. Written comments must be postmarked, e-mailed, faxed, or otherwise submitted by 31 December 2020. If we do not hear from you within this time period, we will assume your agency has no comments at this time.

If you have any questions regarding this process please contact Dana Coburn, Project Manager, at (501) 324-5601 or via email at [dana.o.coburn@usace.army.mil](mailto:dana.o.coburn@usace.army.mil)

Sincerely,

Dana Coburn  
Project Manager  
Programs and Project  
Management Division

## Appendix C

### Notification Materials

- Direct Mail Postcard
- Email Blast
- Press Releases

# Millwood Lake Master Plan and Shoreline Management Plan Update



## PUBLIC SCOPING NOTIFICATION

The Army Corps of Engineers, Little Rock District, is updating the Millwood Lake Master Plan (MP) and Shoreline Management Plan (SMP). The MP guides the classification and management of public lands around the lake and influences future recreational opportunities and natural resource management.

The SMP establishes policy and furnishes guidelines for the protection and preservation of the environmental characteristics of the shoreline, while maintaining a balance between public and private shoreline use.

Pursuant to the National Environmental Policy Act (NEPA), an Environmental Assessment of potential impacts of both draft plans will also be prepared.

**IMPORTANT COVID-19 UPDATE:** Due to the evolving Federal, State, and Local policies designed to address the spread of COVID-19, the Corps will not hold our traditional public workshops at this time. We invite you to visit our website, address provided below, to find out information about the process to update both the master plan and shoreline management plan for Millwood Lake. You will be able to provide comments through the website. If you have questions, voicemail and email options will be provided and you will receive a response.

**We want to hear from you! Please visit our website:**

<https://go.usa.gov/x7Wny>

**for current information or to submit comments.**

*Visit our website to learn the details of the MP and SMP update process. Your input will help define the Millwood Lake MP and SMP Update scheduled for public review in 2021. Staff will be available to answer your questions by either a response phone call or email response. Find out how to leave a question on our website!*

**BUILDING STRONG**



P.O. Box 867  
Little Rock, AR 72203

*We want to hear from You!*  
**Millwood Lake  
Master Plan and  
Shoreline Management  
Plan Update**

<https://go.usa.gov/x7Wny>

## Email Blast

### MILLWOOD LAKE MASTER PLAN & SHORELINE MANAGEMENT PLAN REVISION

The Army Corps of Engineers, Little Rock District, is updating the Millwood Lake Master Plan (MP) and Shoreline Management Plan (SMP).

The MP guides the classification and management of public lands around the lake and influences future recreational opportunities and natural resource management.

The SMP establishes policy and furnishes guidelines for the protection and preservation of the environmental characteristics of the shoreline, while maintaining a balance between public and private shoreline use.

Pursuant to the National Environmental Policy Act (NEPA), an Environmental Assessment of potential impacts of both draft plans will also be prepared.

“Scoping” is the process of determining the scope, focus, and content of master plan and shoreline management plan update documents. For a planning process such as the MP and SMP revision, the scoping process is used as an opportunity to get input from the public and resource agencies about the vision for the MP/SMP update and the issues that the MP/SMP should address where possible.

IMPORTANT COVID-19 UPDATE: Due to the evolving Federal, State, and Local policies designed to address the spread of COVID-19, the Corps will not hold our traditional public workshops at this time. We invite you to visit our website, address provided below, to find out information about the process to update both the master plan and shoreline management plan for Millwood Lake. You will be able to provide comments through the website.

We want to hear from you! Please visit our website:

<https://go.usa.gov/x7Wnf>

for current information or to submit comments.

Visit our website to learn the details of the MP and SMP update process. Your input will help define the Millwood Lake MP and SMP Update scheduled for public review in 2021. Staff will be available to answer your questions by either a response phone call or email response. Find out how to leave a question on our website!

Comments may be submitted via mail, email, or fax with attention to: Millwood Lake MP & SMP Planner, Natural Resources Management Section, USACE, Little Rock District, P.O. Box 867, Little Rock, AR 72203.

Fax: (501) 324-6230, Email: [CESWL-MillwoodLakeMPandSMPRevision@usace.army.mil](mailto:CESWL-MillwoodLakeMPandSMPRevision@usace.army.mil)

Written comments must be postmarked, e-mailed, faxed, or otherwise submitted by December 31<sup>st</sup>, 2020.

### PRIVACY ACT STATEMENT INSTRUCTIONS

AUTHORITY: ER 1130-2-406, and the laws and regulations referenced therein.

PRINCIPAL PURPOSE(S): To provide a means for the maximum practicable public participation in Shoreline Management Plan formulation, preparation and



subsequent revisions, through the use of public meetings, group workshops, open houses or other public involvement.

ROUTINE USE(S): Information you provide will be available for public review or may be disclosed to members of the Department of Defense or other Government agencies who have a need for the information in performance of their official duties, and where use of such information is compatible with the purpose for which the information is collected.

DISCLOSURE: Voluntary; however, failure to furnish the requested information may prevent the Agency from being able to direct meeting notices or provide additional information to commenters.



# NEWS RELEASE

U.S. ARMY CORPS OF ENGINEERS

BUILDING STRONG®

Release No: 88-20  
Release: Immediately  
Nov. 16, 2020

Media Contact:  
Public Affairs Office, 501-324-5551  
[CESWL-PA@usace.army.mil](mailto:CESWL-PA@usace.army.mil)  
Media after hours: 501-563-6835

## **USACE seeks public input for the Millwood Lake Master Plan and Shoreline Management Plan revision process**

Ashdown, Ark. – The U.S. Army Corps of Engineers is notifying the public that the scoping comment period for the Millwood Lake Master Plan and Shoreline Management Plan revisions will begin November 16.

“Scoping” is the process of determining the scope, focus, and content of MP and SMP update documents. For a planning process such as the MP and SMP revision, the scoping process is used as an opportunity to get input from the public and resource agencies about the vision for the MP and SMP update and the issues that the MP and SMP should address where possible.

The MP guides the management of the government lands around our reservoirs. It also affects future management of natural resources and recreational opportunities to ensure the sustainability of Millwood Lake. The planning process will include an analysis of potential effects on the natural and social environment, including fish and wildlife, recreation opportunities, economics, land use, cultural and historical resources, aesthetics, and public health and safety.

--MORE--

The SMP for Millwood Lake establishes policy and furnishes guidelines for the protection and preservation of the environmental characteristics of the shoreline while maintaining a balance between public and private shoreline uses.

Due to the evolving Federal, State, and Local policies designed to address the spread of COVID-19, USACE will not hold traditional public workshops at this time.

To find out more about the Millwood Lake MP and SMP and to submit a comment visit the Millwood Lake MP and SMP webpage at: <https://go.usa.gov/x7WQv>. Comments are due by December 31, 2020.

–30–

## Appendix D

### Scoping Materials

## Millwood Lake Master Plan and Shoreline Management Plan Revisions

The Army Corps of Engineers (USACE), Little Rock District, is revising the Millwood Lake Master Plan and the Millwood Lake Shoreline Management Plan. The Master Plan guides the management of the government lands around the lake. The Master plan affects future management of natural resources and recreational opportunities to ensure the sustainability of Millwood Lake.

The Master Plan revision sets the stage for the Shoreline Management Plan, which is how the vision of the Master Plan is implemented.

The SMP for Millwood Lake **establishes policy and furnishes guidelines** for the protection and preservation of the environmental characteristics of the shoreline while **maintaining a balance between public and private shoreline uses**.

The planning process will include an analysis of potential effects on the natural and social environment, including fish and wildlife, recreation opportunities, economics, land use, cultural and historical resources, aesthetics, and public health and safety.

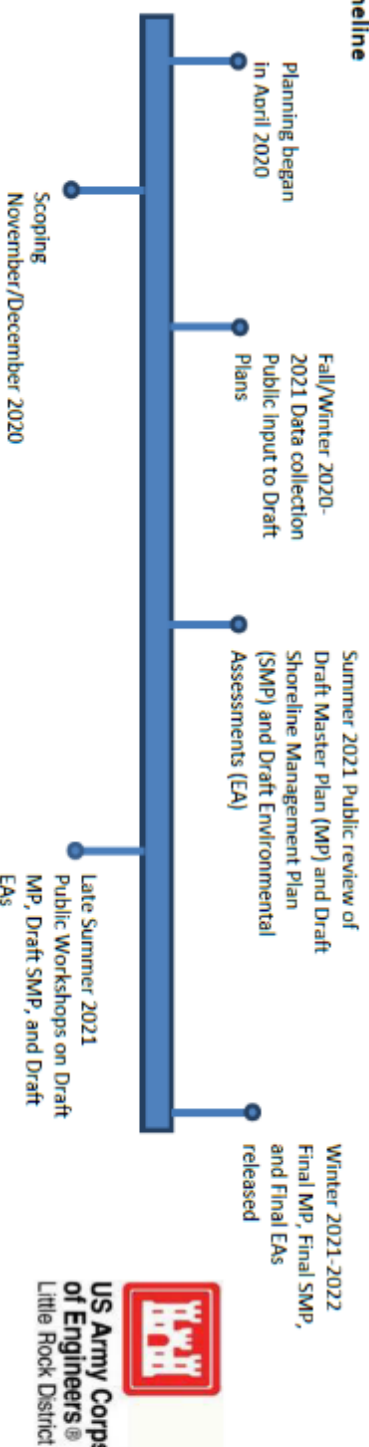
This is your opportunity to let USACE know how you would like the lake to be managed for the future.

For More Information Visit Our Website at:  
<https://go.usa.gov/X7WQz>



The Millwood Lake Civil Works project on the Little River is located 16 river miles above its confluence with the Red River, about seven miles east of Ashdown, AR. Millwood Lake was authorized for construction by the Flood Control Act approved 3 July 1958. The lake has 37,616 acres of land and water with 92 miles of boundary line. The lake provides many recreational opportunities, along with fish and wildlife habitat.

### Project Timeline



## Why Update the Millwood Lake Master Plan?

The current Millwood Lake Master Plan was developed more than 40 years ago and is outdated. The master plan revision will classify the government lands around the lake based on environmental and socioeconomic considerations, public input, and an evaluation of past, present, and forecasted trends.

Lands may be classified into one of these categories:

- **Project Operations:** lands required for the dam, spillway, offices, and other areas used solely for the operation of the reservoir.
- **High Density Recreation:** lands acquired and designated for use as parks or other areas for intensive recreational activities by the visiting public. Shoreline Use Permits should not be allowed in these areas.
- **Environmentally Sensitive Areas:** lands designated for areas where scientific, ecological, cultural, or aesthetic features have been identified. These areas are managed to protect environmental resources.
- **Multiple Resource Management Lands:** This classification allows for the designation of a predominant use with the understanding that other compatible uses may also occur on these lands; these additional uses may include:
  - **Low Density Recreation:** lands classified for use for activities such as hiking trails, primitive camping, limited lake access points, and other similar activities by the visiting public. Shoreline Use Permits may be permitted in these areas in accordance with the shoreline management plan.
  - **Wildlife Management:** lands allocated as habitat for fish and wildlife and are generally open for hunting and fishing.
  - **Future/Inactive Recreation Areas:** Lands intended for recreation, but which were never developed or have been closed.
  - **Vegetative Management:** Lands designated for stewardship of forest, prairie, and other native vegetative cover.
- **Water Surface:** For those projects that administer a surface water zoning program, this will be included in the Master plan revision process.
  - **Restricted:** Water areas restricted for project operations, safety, and security purposes.
  - **Designated No-Wake:** To protect environmentally sensitive shoreline areas, recreational water access areas from disturbance, and for public safety.
  - **Fish and Wildlife Sanctuary:** Annual or seasonal restrictions on areas to protect fish and wildlife species during periods of migrations, resting, feeding, nesting, and/or spawning.
  - **Open Recreation:** Those waters available for year-round or seasonal water-based recreational use.

These land and water classifications are established in the master plan and will guide future updates to the operation management plan and shoreline management plan, which implements the master plan.

## What is a Shoreline Management Plan (SMP)?

The Millwood Lake Shoreline Management Plan is the required USACE approval document (ER 1130-2-406) that protects and manages the shorelines of all Civil Works water resource development projects under Corps jurisdiction in a manner which will promote the safe and healthful use of these shorelines by the public while maintaining environmental safeguards to ensure a quality resource for use by the public.

The Millwood Lake SMP main objectives are to manage and protect the shoreline, to establish and maintain acceptable fish and wildlife habitat, aesthetic quality and natural environment conditions and to promote the safe and healthful use of the lake and shoreline for recreational purposes.



**Millwood Lake Master Plan and Shoreline  
Management Plan Revision and Environmental  
Assessment Comment Form**



Please use this form to provide comments and suggestions about how you would like to see the Millwood Lake Master Plan and Shoreline Management Plan revised; or provide comments on the issues that should be studied before a decision is made on Master Plan and Shoreline Management Plan revisions. Feel free to take an extra form to provide to friends or neighbors and send the forms back, before December 31, 2020, to USACE at the addresses below.

(Optional Information)

Name/Organization: \_\_\_\_\_

Address: \_\_\_\_\_  
\_\_\_\_\_

E-mail: \_\_\_\_\_

Phone: \_\_\_\_\_

How would you like to see Millwood Lake in 20 years? What changes, if any, would you like to see at the lake?

---

---

---

What about Millwood Lake is most and least important to you? \_\_\_\_\_

---

---

Please provide your comments and suggestions on items to update in the Millwood Lake Shoreline Management Plan (SMP). Areas of discussion might include: current zoning, current policies on dock and vegetation permits, how could the lake permits be better managed. Please be as specific as possible.

---

---

---

---

---

Additional comments on the Master Plan or Shoreline Management Plan Revision or about issues that should be studied.

---

---

Comments may be submitted via mail, email, or fax with attention to: Millwood Lake MP & SMP Planner, Natural Resources Management Section, USACE, Little Rock District, P.O. Box 867, Little Rock, AR 72203.

Fax: (501) 324-6230, Email: CESWL-MillwoodLakeMPandSMPRevision@usace.army.mil

Website: <https://go.usa.gov/x7Wnv>

Written comments must be postmarked, e-mailed, faxed, or otherwise submitted by December 31, 2020.

**PRIVACY ACT STATEMENT INSTRUCTIONS**

**AUTHORITY:** ER 1130-2-406, and the laws and regulations referenced therein.

**PRINCIPAL PURPOSE(S):** To provide a means for the maximum practicable public participation in Shoreline Management Plan formulation, preparation and subsequent revisions, through the use of public meetings, group workshops, open houses or other public involvement.

**ROUTINE USE(S):** Information you provide will be available for public review or may be disclosed to members of the Department of Defense or other Government agencies who have a need for the information in performance of their official duties, and where use of such information is compatible with the purpose for which the information is collected.

**DISCLOSURE:** Voluntary; however, failure to furnish the requested information may prevent the Agency from being able to direct meeting notices or provide additional information to commenters.

Postage Required

Millwood Lake MP & SMP Planner  
Natural Resources Management Section  
Little Rock District, U.S. Army Corps of Engineers  
P.O. Box 867  
Little Rock, AR 72203

-----**Fold Here**-----

Tape ends before mailing



## Appendix F

### Public Scoping Comments

From: [noreply@dma.mil](mailto:noreply@dma.mil)  
To: [CESWL-MillwoodLakeMPandSMPRevision](#)  
Subject: Public Comment Submission for Millwood Lake SMP / MP  
Date: Wednesday, December 9, 2020 5:01:08 PM

---

**Name / Organization:**

**Address:**

AR US

**E-Mail:**

**Phone:**

**How would you like to see Millwood Lake in 20 years? What changes, if any, would you like to see at the lake:**

Install steps below the spillway from the parking lot to the rivers edge. Do this on sides downstream of the spillway. This will help improve bank fishing access.

**What about Millwood Lake is most and least important to you:**

**Please provide your comments and suggestions on items to update in the Millwood Lake Shoreline Management Plan (SMP) - Areas of discussion might include: current zoning, current policies on dock and vegetation permits, how the lake could be better managed. Please be as specific as possible:**

**Additional Comments - Please provide any other comments on the Master Plan or Shoreline Management Plan - or - provide information about issues you feel deserve more study:**

-----  
HTTP\_CMS\_CLIENT\_IP:

HTTP\_X\_ARR\_LOG\_ID: 01471e55-0d45-4ab9-ab27-d67d51aceafe

HTTP\_ORIGIN: <https://www.swl.usace.army.mil>

HTTP\_TRUE\_CLIENT\_IP: 2600:100b:b11b:6086:31a4:7967:9d97:772c

From: [noreply@dma.mil](mailto:noreply@dma.mil)  
To: [CESWL-MillwoodLakeMPandSMPRevision](#)  
Subject: Public Comment Submission for Millwood Lake SMP / MP  
Date: Wednesday, December 9, 2020 8:05:17 PM

---

**Name / Organization:**

**Address:**

**E-Mail:**

**Phone:**

**How would you like to see Millwood Lake in 20 years? What changes, if any, would you like to see at the lake:**

**What about Millwood Lake is most and least important to you:**

**Please provide your comments and suggestions on items to update in the Millwood Lake Shoreline Management Plan (SMP) - Areas of discussion might include: current zoning, current policies on dock and vegetation permits, how the lake could be better managed. Please be as specific as possible:**

**Additional Comments - Please provide any other comments on the Master Plan or Shoreline Management Plan - or - provide information about issues you feel deserve more study:**

## Privacy Act of 1974, 5 U.S.C. § 552a

I would like to see Millwood be the incredible lake that many east Texas lakes are. The potential is there if more attention was paid towards stocking Florida strain bass. Millwood could be an incredible draw for in state and out of state fishermen.

While I realize that many will differ in my opinion, I think more emphasis is placed on duck hunting than fishing. Duck hunting has such a short season compared to fishing.

Millwood needs dredging in several areas, the lake run poles need repair in several areas and some type of highly visible striping should be placed on the poles. Bouys are frequently missing in very dangerous areas and the lake could benefit from raising the average pool by 2 feet.

-----  
HTTP\_CMS\_CLIENT\_IP:

HTTP\_X\_ARR\_LOG\_ID: 387bc520-aa6c-4d79-abdb-329244a13f29

HTTP\_ORIGIN: <https://www.swl.usace.army.mil>

HTTP\_TRUE\_CLIENT\_IP: 2604:cb00:236:fa00:145b:d953:9968:791c

From: [noreply@dma.mil](mailto:noreply@dma.mil)  
To: [CESWL-MillwoodLakeMPandSMPRevision](#)  
Subject: Public Comment Submission for Millwood Lake SMP / MP  
Date: Wednesday, December 9, 2020 4:27:52 PM

---

**Name / Organization:**

**Address:**

**E-Mail:**

**Phone:**

**How would you like to see Millwood Lake in 20 years? What changes, if any, would you like to see at the lake:**

**What about Millwood Lake is most and least important to you:**

**Please provide your comments and suggestions on items to update in the Millwood Lake Shoreline Management Plan (SMP) - Areas of discussion might include: current zoning, current policies on dock and vegetation permits, how the lake could be better managed. Please be as specific as possible:**

**Additional Comments - Please provide any other comments on the Master Plan or Shoreline Management Plan - or - provide information about issues you feel deserve more study:**

## Privacy Act of 1974, 5 U.S.C. § 552a

I would like to see a 4 foot drawdown in the summers like was done in the past to harden the bottom and increase vegetation on the main lake. After the flood several years back there is nothing on the main lake and that is hurting in my opinion.

-----  
HTTP\_CMS\_CLIENT\_IP:  
HTTP\_X\_ARR\_LOG\_ID: d739137e-2773-47a6-986d-da81783af49b  
HTTP\_ORIGIN: <https://www.swl.usace.army.mil>  
HTTP\_TRUE\_CLIENT\_IP: 75.117.255.148

From: [noreply@dma.mil](mailto:noreply@dma.mil)  
To: [CESWL-MillwoodLakeMPandSMPRevision](#)  
Subject: Public Comment Submission for Millwood Lake SMP / MP  
Date: Thursday, December 31, 2020 2:15:13 PM

---

Name / Organization:

Address:

E-Mail:

Phone:

How would you like to see Millwood Lake in 20 years? What changes, if any, would you like to see at the lake:

What about Millwood Lake is most and least important to you:

Please provide your comments and suggestions on items to update in the Millwood Lake Shoreline Management Plan (SMP) - Areas of discussion might include: current zoning, current policies on dock and vegetation permits, how the lake could be better managed. Please be as specific as possible:

Additional Comments - Please provide any other comments on the Master Plan or Shoreline Management Plan - or - provide information about issues you feel deserve more study:

**Privacy Act of 1974, 5 U.S.C. §  
552a**

To be fishable again and cleaned up

Fishing most important and hunting on it as least important

Have a drawdown every winter to kill out the grass and lily pads that have choked the lake almost out. Then raise it back up before spring to 4-5 ft high for a week or so then lower it back to normal pool. Kill the comrants and alligators because the lake is full of both

-----  
HTTP\_CMS\_CLIENT\_IP:

HTTP\_X\_ARR\_LOG\_ID: baf60b29-6d78-4b77-ba04-3577291829f5

HTTP\_ORIGIN: <https://www.swl.usace.army.mil>

HTTP\_TRUE\_CLIENT\_IP: 2600:1700:d750:ade0:f4dc:84b2:cbf:ce2d

From: [noreply@dma.mil](mailto:noreply@dma.mil)  
 To: [CESWL-MillwoodLakeMPandSMPRevision](#)  
 Subject: Public Comment Submission for Millwood Lake SMP / MP  
 Date: Wednesday, December 9, 2020 4:36:59 PM

Name / Organization:

Address:

E-Mail:

Phone:

## Privacy Act of 1974, 5 U.S.C. § 552a

How would you like to see Millwood Lake in 20 years? What changes, if any, would you like to see at the lake:

1. Allow more alligator tags per year, entirely to many alligators.
2. Lower the water level one foot (12") during late summer early fall. (July-October). Raise the water three feet (two feet above normal during winter). Then keep the water one foot at minimum above normal during spring months to allow fish to spawn without being disturbed. Repeat this for 2 years and study results.
3. Bring the largemouth bass length limit back to 16" and 3 fish per person.
4. Only release fingerlings when the water is one foot above normal instead of drawing three feet of water off the lake and confining all the fish to the deeper pools where the 100,000+/- get eating instead of growing.
5. Put more river buoy's in the river channel for inexperienced boaters traveling through river channel.

What about Millwood Lake is most and least important to you:

Most important is clean water for all wildlife. Fish, deer, duck, etc

Please provide your comments and suggestions on items to update in the Millwood Lake Shoreline Management Plan (SMP) - Areas of discussion might include: current zoning, current policies on dock and vegetation permits, how the lake could be better managed. Please be as specific as possible:

Find a way to relocate the old vegetation that has the mouths of the creek channels and small oxbows choked up. Places that used to be accessible in an outboard flat bottom are no longer.

Additional Comments - Please provide any other comments on the Master

**Plan or Shoreline  
Management Plan - or -  
provide information  
about issues you feel  
deserve more study:**

Help the largemouth bass population more than any other fish. It's embarrassing of the weights that win tournaments compared to what was winning 15-20 years ago.

-----  
HTTP\_CMS\_CLIENT\_IP:

HTTP\_X\_ARR\_LOG\_ID: 2e0f77af-b850-4587-88c9-031f9f27d279

HTTP\_ORIGIN: https://www.swl.usace.army.mil

HTTP\_TRUE\_CLIENT\_IP: 2600:100b:b12c:9eab:31cf:b6ba:cda8:33a5



From: [noreply@dma.mil](mailto:noreply@dma.mil)  
 To: [CESWL-MillwoodLakeMPandSMPRevision](#)  
 Subject: Public Comment Submission for Millwood Lake SMP / MP  
 Date: Thursday, December 10, 2020 1:01:18 AM

Name / Organization:

Address:

E-Mail:

Phone:

## Privacy Act of 1974, 5 U.S.C. § 552a

How would you like to see Millwood Lake in 20 years? What changes, if any, would you like to see at the lake:

Would like to see piers built on Millwood in good spots over deeper waters so our wounded warriors and handicapped have a place to go and enjoy fishing. I watch them try to fish at the landings and get threatened by rangers because they are fishing on the boat ramps. They tore down our Docks because they weren't built to withstand high water. The piers should be handicap accessible. I helped build piers on the ocean. Its not that hard to build them to withstand weather and floods. The other thing is bathrooms at the landings. Alot more people would visit if they could use a restroom without having to drive a half mile to get to one. Also make a slip that has a wheelchair lift and a steady beam to help boaters that are handicapped. Also we need to have at least a foot of water added to the lake level at normal pool.

What about Millwood Lake is most and least important to you:

Most important about Millwood would be access for ALL PEOPLE, HANDICAPPED AND WHEELCHAIR ACCESABILITY AND THE DOCKS BACK AT THE LANDINGS. Saratoga landing has been left behind on upgrades and piers. The least important thing about it is stump removal. I think we need more fish shelters and habitat.

Please provide your comments and suggestions on items to update in the Millwood Lake Shoreline Management Plan (SMP) - Areas of discussion might include: current zoning, current policies on dock and vegetation permits, how the lake could be better managed. Please be as specific as possible:

Shoreline erosion is really bad on the Saratoga side of the Okay point. I think a little deeper average would help on the wave action more. Its too shallow so it makes faster waves. Also the Westview Road ramp was blocked off by a civilian and stopped alot of people from being able to fish. This is one spot that was perfect for handicap and wheelchairs could fish from. Its a high bank and pretty smooth. Its also a good landing. I wish yall could do something about this one. So many people fished this place. One guy decided that it was off limits and put a cable up. Also the jetti at Saratoga landing could be made a concrete pathway in the middle for the elderly and handicap. Please do something for our vets and the handicap.

Additional Comments - Please provide any other comments on the Master Plan or Shoreline Management Plan - or -

This lake is so shallow at Saratoga landing that you could make a concrete walkway and seawall together and have fishing and



**provide information  
about issues you feel  
deserve more study:**

protection for the bank all in one.

-----  
HTTP\_CMS\_CLIENT\_IP:

HTTP\_X\_ARR\_LOG\_ID: e7479866-4358-4e45-94d9-e1f65b92e887

HTTP\_ORIGIN: https://www.swl.usace.army.mil

HTTP\_TRUE\_CLIENT\_IP: 2600:100b:b104:1f0f:0:35:209a:4401

From: [noreply@dma.mil](mailto:noreply@dma.mil)  
To: [CESWL-MillwoodLakeMPandSMPRevision](#)  
Subject: Public Comment Submission for Millwood Lake SMP / MP  
Date: Wednesday, December 9, 2020 4:05:08 PM

---

Name / Organization:

Address:

E-Mail:

Phone:

How would you like to see Millwood Lake in 20 years? What changes, if any, would you like to see at the lake:

What about Millwood Lake is most and least important to you:

Please provide your comments and suggestions on items to update in the Millwood Lake Shoreline Management Plan (SMP) - Areas of discussion might include: current zoning, current policies on dock and vegetation permits, how the lake could be better managed. Please be as specific as possible:

Additional Comments - Please provide any other comments on the Master Plan or Shoreline Management Plan - or - provide information about issues you feel deserve more study:

## Privacy Act of 1974, 5 U.S.C. § 552a

I would first want to see more spots to bank fish. I would love to see a dock put back over on beards bluff. Fix the boat ramps at paraloma, beards bluff, and saratoga. Raise the normal pool up 2 ft. Cut back on water release during mid spring and fall. We need to fix the open dock on yarbrough landing. I love to fish millwood and would love to be able to fish it in 20 years.

Open up more alligator tags.

-----  
HTTP\_CMS\_CLIENT\_IP:  
HTTP\_X\_ARR\_LOG\_ID: 57e70bb7-efaa-499d-89d0-d9b69aaedb18  
HTTP\_ORIGIN: <https://www.swl.usace.army.mil>  
HTTP\_TRUE\_CLIENT\_IP: 2600:100b:b12c:21c9:311f:f046:34db:74c5

From: [noreply@dma.mil](mailto:noreply@dma.mil)  
 To: [CESWL-MillwoodLakeMPandSMPRevision](#)  
 Subject: Public Comment Submission for Millwood Lake SMP / MP  
 Date: Sunday, November 29, 2020 8:27:24 PM

Name / Organization:

Address:

E-Mail:

Phone:

## Privacy Act of 1974, 5 U.S.C. § 552a

How would you like to see Millwood Lake in 20 years? What changes, if any, would you like to see at the lake:

I would like to see it as one of the best fishing lakes in the state. If not the best. In my opinion Millwood is the best lake in the state to fish but that is not in a lot of other peoples point of view. A lot of people that have fished the lake for 20 plus years will tell you the lake used to be a lot better 10 years ago than today. It is a great crappie lake but I am the bass fisherman.

What about Millwood Lake is most and least important to you:

Safety of the lake(boat lanes and buoys and fishing quality is most important.

Hunting can be important

Least important.....

Please provide your comments and suggestions on items to update in the Millwood Lake Shoreline Management Plan (SMP) - Areas of discussion might include: current zoning, current policies on dock and vegetation permits, how the lake could be better managed. Please be as specific as possible:

I would like to see information on the yearly drawdowns of the lake compared to drawdowns of the lake in a time segment of three to four years.

I have had older locals tell me that the lake fished a lot better when the drawdowns were not yearly like it has turned into the last five to ten years.

Additional Comments - Please provide any other comments on the Master Plan or Shoreline Management Plan - or - provide information about issues you feel deserve more study:

I tried going through the documents and seeing what the info talked about on drawdowns. I may have missed it.

I think the lake has great camp sites / parks. Very nice. Clean and enough places to park. I have been impressed with the lake. I have grown up fishing central Ar and Hot Springs lakes. I have lived down here for three years and Millwood has turned into my favorite place to fish. When I talk to locals they make it seem like it used to be a lot better place to fish....

From: [noreply@dma.mil](mailto:noreply@dma.mil)  
To: [CESWL-MillwoodLakeMPandSMPRevision](#)  
Subject: Public Comment Submission for Millwood Lake SMP / MP  
Date: Wednesday, December 9, 2020 8:01:45 PM

---

|   |  |
|---|--|
| Name / Organization:  | <b>Privacy Act of 1974, 5 U.S.C. § 552a</b>  |
| Address:  |  |
| E-Mail:   |  |
| Phone:  |  |
| How would you like to see Millwood Lake in 20 years? What changes, if any, would you like to see at the lake:   | Change full regular pool to a foot or two foot higher than what it is now. Put a plan in place for siltation or possible even dredge out places that are already silted in. Draw down more than 2 foot to make main lake habitat better. |
| What about Millwood Lake is most and least important to you:  | Bass fishing is the most important to me.  |
| Please provide your comments and suggestions on items to update in the Millwood Lake Shoreline Management Plan (SMP) - Areas of discussion might include: current zoning, current policies on dock and vegetation permits, how the lake could be better managed. Please be as specific as possible: |  |
| Additional Comments - Please provide any other comments on the Master Plan or Shoreline Management Plan - or - provide information about issues you feel deserve more study:  | I think work needs to be done with siltation and habitat or the lake as a resource is going to go down hill quick.   |

-----  
HTTP\_CMS\_CLIENT\_IP:  
HTTP\_X\_ARR\_LOG\_ID: bb044eca-9ecf-46ac-929f-084cc94c2cf1  
HTTP\_ORIGIN: <https://www.swl.usace.army.mil>  
HTTP\_TRUE\_CLIENT\_IP: 173.218.171.195

From: [noreply@dma.mil](mailto:noreply@dma.mil)  
To: [CESWL-MillwoodLakeMPandSMPRevision](#)  
Subject: Public Comment Submission for Millwood Lake SMP / MP  
Date: Wednesday, December 9, 2020 5:01:24 PM

---

|   |  |
|---|--|
| Name / Organization:  | <b>Privacy Act of 1974, 5 U.S.C. § 552a</b>  |
| Address:  |  |
| E-Mail:   |  |
| Phone:  |  |
| How would you like to see Millwood Lake in 20 years? What changes, if any, would you like to see at the lake:   | Better than it is now! Used to be a great bass lake, been terrible for last 15 years.  |
| What about Millwood Lake is most and least important to you:  | Most important- should be the fishing destination it was many moons ago.   |
| Please provide your comments and suggestions on items to update in the Millwood Lake Shoreline Management Plan (SMP) - Areas of discussion might include: current zoning, current policies on dock and vegetation permits, how the lake could be better managed. Please be as specific as possible: | Fix all boat ramps.<br>Docks at each major boat ramp.<br>Stop the rise and fall of the water all the time.<br>Can't fish most of the river due to too much vegetation.<br>Ducks should not be the #1 priority.<br>Return grass to the main lake. |
| Additional Comments - Please provide any other comments on the Master Plan or Shoreline Management Plan - or - provide information about issues you feel deserve more study:  | It is sad for me to see Millwood become a laughing stock among the lakes in our area.<br>Best suggestion I have heard in years is to drain it and introduce prairie dogs so at least it would be worth a trip.<br>Fix Millwood Please            |

-----  
HTTP\_CMS\_CLIENT\_IP:  
HTTP\_X\_ARR\_LOG\_ID: 663cd02d-78c8-4c43-8262-d6f60bfd9adf  
HTTP\_ORIGIN: <https://www.swl.usace.army.mil>  
HTTP\_TRUE\_CLIENT\_IP: 174.126.82.189

From: [noreply@dma.mil](mailto:noreply@dma.mil)  
To: [CESWL-MillwoodLakeMPandSMPRevision](#)  
Subject: Public Comment Submission for Millwood Lake SMP / MP  
Date: Wednesday, December 9, 2020 4:45:03 PM

---

Name / Organization:

Address:

E-Mail:

Phone:

How would you like to see Millwood Lake in 20 years? What changes, if any, would you like to see at the lake:

What about Millwood Lake is most and least important to you:

Please provide your comments and suggestions on items to update in the Millwood Lake Shoreline Management Plan (SMP) - Areas of discussion might include: current zoning, current policies on dock and vegetation permits, how the lake could be better managed. Please be as specific as possible:

Additional Comments - Please provide any other comments on the Master Plan or Shoreline Management Plan - or - provide information about issues you feel deserve more study:

## Privacy Act of 1974, 5 U.S.C. § 552a

I would like to see an 18" rise in normal pool if that is possible. Summer time 4" draw down every other year. Finally implement some sort of vegetation and sedimentation plan that will help in navigating the lake.

Most important thing to me about the lake is fishing. The least important thing would probably be holding homeowners accountable and fining them for cleaning up brush from so they can see the lake from their back porch.

Allow citizens to help with shoreline clean up. We can all work together to make Millwood a prettier lake. Allow more boat docks.

-----  
HTTP\_CMS\_CLIENT\_IP:  
HTTP\_X\_ARR\_LOG\_ID: e1c24638-916e-4733-b545-e349593e6707  
HTTP\_ORIGIN: <https://www.swl.usace.army.mil>  
HTTP\_TRUE\_CLIENT\_IP: 2600:100b:b10a:3ab0:c8f3:e962:f2f3:abe4



## 552a

From: <noreply@dma.mil <<mailto:noreply@dma.mil>>>  
Date: Mon, Nov 16, 2020 at 5:25 PM  
Subject: Public Comment Submission for Millwood Lake SMP / MP

### Privacy Act of 1974, 5 U.S.C. § 552a

How would you like to see Millwood Lake in 20 years? What changes, if any, would you like to see at the lake: I want to express how much I have enjoyed camping at the Cottenshed Area camp grounds over the years. My companion and I have stayed there four or five times and relish the beauty and peacefulness of the area. The camp hosts have always gone above and beyond to help us and check on us. It is truly a unique area and I would like to see the Corp continue to maintain it.

Thank you for allowing me to tell you about the great job the Corp does at Cottenshed.

#### Privacy Act of 1974, 5 U.S.C. § 552a

What about Millwood Lake is most and least important to you: Cottenshed! Keep it beautiful!  
Please provide your comments and suggestions on items to update in the Millwood Lake Shoreline Management Plan (SMP) - Areas of discussion might include: current zoning, current policies on dock and vegetation permits, how the lake could be better managed. Please be as specific as possible: Perhaps another dock at Cottenshed!  
Additional Comments - Please provide any other comments on the Master Plan or Shoreline Management Plan - or - provide information about issues you feel deserve more study: The Army Corp of Engineers is doing a fantastic job at Millwood!

-----  
HTTP\_CMS\_CLIENT\_IP:  
HTTP\_X\_ARR\_LOG\_ID: aff44064-6eed-4711-ba9f-5df35b5cba98  
HTTP\_ORIGIN: <https://www.swl.usace.army.mil> <Blockedhttps://www.swl.usace.army.mil>  
HTTP\_TRUE\_CLIENT\_IP: 72.200.230.245

From: [noreply@dma.mil](mailto:noreply@dma.mil)  
To: [CESWL-MillwoodLakeMPandSMPRevision](#)  
Subject: Public Comment Submission for Millwood Lake SMP / MP  
Date: Thursday, December 10, 2020 6:54:55 AM

---

Name / Organization:

Address:

E-Mail:

Phone:

How would you like to see Millwood Lake in 20 years? What changes, if any, would you like to see at the lake:

What about Millwood Lake is most and least important to you:

Please provide your comments and suggestions on items to update in the Millwood Lake Shoreline Management Plan (SMP) - Areas of discussion might include: current zoning, current policies on dock and vegetation permits, how the lake could be better managed. Please be as specific as possible:

Additional Comments - Please provide any other comments on the Master Plan or Shoreline Management Plan - or - provide information about issues you feel deserve more study:

## Privacy Act of 1974, 5 U.S.C. § 552a

Raise the lake level 2' and hold . This would provide excellent cover for all fish .

-----  
HTTP\_CMS\_CLIENT\_IP:  
HTTP\_X\_ARR\_LOG\_ID: 329a3f74-7a8c-44d9-b88b-ab1caee2270a  
HTTP\_ORIGIN: <https://www.swl.usace.army.mil>  
HTTP\_TRUE\_CLIENT\_IP: 69.30.153.197



From: [noreply@dma.mil](mailto:noreply@dma.mil)  
To: [CESWL-MillwoodLakeMPandSMPRevision](#)  
Subject: Public Comment Submission for Millwood Lake SMP / MP  
Date: Wednesday, December 9, 2020 6:41:58 PM

---

Name / Organization:

Address:

E-Mail:

Phone:

How would you like to see Millwood Lake in 20 years? What changes, if any, would you like to see at the lake:

What about Millwood Lake is most and least important to you:

Please provide your comments and suggestions on items to update in the Millwood Lake Shoreline Management Plan (SMP) - Areas of discussion might include: current zoning, current policies on dock and vegetation permits, how the lake could be better managed. Please be as specific as possible:

Additional Comments - Please provide any other comments on the Master Plan or Shoreline Management Plan - or - provide information about issues you feel deserve more study:

## Privacy Act of 1974, 5 U.S.C. § 552a

Dredge lake out in front of woodline and make several Islands that stand 2 to 3 feet above normal pool.

I grew up fishing the lake. It is one of the best lakes around. Great for camping and fishing. Don't think anything not important.

-----  
HTTP\_CMS\_CLIENT\_IP:  
HTTP\_X\_ARR\_LOG\_ID: e73c473b-465c-45ab-b757-fb19469eadda  
HTTP\_ORIGIN: <https://www.swl.usace.army.mil>  
HTTP\_TRUE\_CLIENT\_IP: 216.238.5.91

From: [noreply@dma.mil](mailto:noreply@dma.mil)  
 To: [CESWI-MillwoodLakeMPandSMPRevision](#)  
 Subject: Public Comment Submission for Millwood Lake SMP / MP  
 Date: Monday, December 14, 2020 9:20:44 AM

Name / Organization:

Address:

E-Mail:

Phone:

## Privacy Act of 1974, 5 U.S.C. § 552a

How would you like to see Millwood Lake in 20 years? What changes, if any, would you like to see at the lake:

I am not sure how to change the silting problem on Millwood, but in my opinion this is the biggest problem with the lake. The main lake is almost unfishable in many areas. Over the last 20 years the silt has filled in most areas used by bass. This lake was so much better 10 years ago than it is today. I have seen little good in the draw downs that have taken place except for the detrimental effect that it has on the fish population.

I know Millwood will never be what it was back in the 1st 30 years, but I don't understand why it has silted in like it has. I have heard there was talk about raising the lake level 2 feet permanently. I think that would be a good thing. I would like to know how that would effect the silting problem.

What about Millwood Lake is most and least important to you:

The most important is the Bass population in the lake. The catfish and crappie are going to thrive in this lake no matter what you do, but the bass need some hard bottom. I would like to see the hydrilla come back in the main lake. This would help the tourism in our area. Texas has figured out that Bass fishing draws a big crowd. This is the part that I wish Arkansas would figure out. I drove to Toledo Bend last week just to go bass fishing. People would do the same thing here.

Please provide your comments and suggestions on items to update in the Millwood Lake Shoreline Management Plan (SMP) - Areas of discussion might include: current zoning, current policies on dock and vegetation permits, how the lake could be better managed. Please be as specific as possible:

I am not sure about this part of the plan.

Additional Comments - Please provide any other comments on the Master Plan or Shoreline

From: [noreply@dma.mil](mailto:noreply@dma.mil)  
To: [CESWL-MillwoodLakeMPandSMPRevision](#)  
Subject: Public Comment Submission for Millwood Lake SMP / MP  
Date: Wednesday, December 9, 2020 10:59:56 PM

---

Name / Organization:

Address:

E-Mail:

Phone:

How would you like to see Millwood Lake in 20 years? What changes, if any, would you like to see at the lake:

What about Millwood Lake is most and least important to you:

Please provide your comments and suggestions on items to update in the Millwood Lake Shoreline Management Plan (SMP) - Areas of discussion might include: current zoning, current policies on dock and vegetation permits, how the lake could be better managed. Please be as specific as possible:

Additional Comments - Please provide any other comments on the Master Plan or Shoreline Management Plan - or - provide information about issues you feel deserve more study:

**Privacy Act of 1974, 5 U.S.C. § 552a**

Millwood needs more cover or grass for the fish to grow. This would include a draw down in the summer to let the grass grow and get a harder bottom. Also put a season on the water turkeys because between them and the pelicans they are destroying the fish population!!

-----  
HTTP\_CMS\_CLIENT\_IP:

HTTP\_X\_ARR\_LOG\_ID: f2b5d52a-1850-4e16-96f8-24d3fb3a5454

HTTP\_ORIGIN: <https://www.swl.usace.army.mil>

HTTP\_TRUE\_CLIENT\_IP: 96.45.228.237

From: [noreply@dma.mil](mailto:noreply@dma.mil)  
 To: [CESWL-MillwoodLakeMPandSMPRevision](#)  
 Subject: Public Comment Submission for Millwood Lake SMP / MP  
 Date: Saturday, December 5, 2020 4:18:08 PM

Name / Organization:

Address:

E-Mail:

Phone:

## Privacy Act of 1974, 5 U.S.C. § 552a

How would you like to see Millwood Lake in 20 years? What changes, if any, would you like to see at the lake:

I would like to see you all the campgrounds and recreation areas such as Paraloma opened and maintained again. This is somewhere that my dad took me and my brothers and told us so much about the outdoors now that I have kids of my own I would like to be able to take them down there and teach them the way that I learned about the area. Another thing I would like to see you somewhere on the lake would be a new active marina or you could get fuel and basic supplies while you were out on the lake without having to pull out and go all the way to Lockesburg or Ashdown.

What about Millwood Lake is most and least important to you:

The most important thing about the lake to me is having a quality place with such a diverse amount of wildlife to be able to take your family and teach them about the outdoors and different species that live in our area.

Please provide your comments and suggestions on items to update in the Millwood Lake Shoreline Management Plan (SMP) - Areas of discussion might include: current zoning, current policies on dock and vegetation permits, how the lake could be better managed. Please be as specific as possible:

Something to maybe consider for people who are just beginning to get out and experience all that Millwood like house to offer especially boating we should look into putting signs around the boat ramps about all the tree stumps and the dangers they pose to reduce boating accidents to those who were unaware of all the things just beneath the water level when the lake is up.

Additional Comments - Please provide any other comments on the Master Plan or Shoreline Management Plan - or - provide information about issues you feel deserve more study:

I think you should reach out to the public and get their opinions on the updating of recreational areas around the lake and how to make the outdoor experience better and more family friendly for the generations to come so that we can leave it better than how we found it.



From: [noreply@dma.mil](mailto:noreply@dma.mil)  
To: [CESWL-MillwoodLakeMPandSMPRevision](#)  
Subject: Public Comment Submission for Millwood Lake SMP / MP  
Date: Thursday, December 10, 2020 11:45:35 AM

Name / Organization:

Address:

E-Mail:

Phone:

## Privacy Act of 1974, 5 U.S.C. § 552a

How would you like to see Millwood Lake in 20 years? What changes, if any, would you like to see at the lake:

In 20 years I would like to see Millwood Lake producing and running smoothly. I would love to see Millwood producing a lot of big fish and having more tournament and wide spread fame. I think Millwood has exceeded a lot of expectations, but I believe it still can have a lot of potential for many things. It is a great lake that could possibly be even better. It has the potential to produce fish 8 or better regularly and even be better than that.

What about Millwood Lake is most and least important to you:

Millwood is most important to me in many ways. I fish a lot of tournaments and fun fishing out there. Most of my family spends weeks at a time out there camping and fishing. It is a great place for a lot of things. It is important for fun and good time with family and friends.

Please provide your comments and suggestions on items to update in the Millwood Lake Shoreline Management Plan (SMP) - Areas of discussion might include: current zoning, current policies on dock and vegetation permits, how the lake could be better managed. Please be as specific as possible:

I know this may be out of your control, but I think more docks on the lake would be a good thing to have. Maybe a less extensive process to own a dck could help potentially. Some vegetation is a little out of control in certain places along the river in the backs of creeks or on the lake. But, the vegetation is a good thing and I believe it doesn't need to be sprayed or anything. The vegetation is a great thing all over the lake. I know on the lake side there is not as much hydrilla as there used to be. I think a hydrilla comeback could be a major bonus on the lake. Obviously there is a lot of timber throughout the lake which is a major advantage too. Addition of rocks along select banks for erosion would be a good location for forage. It would make great habitat for all fish and bait forage in the lake. I think a little cleanup of some small fish throughout the lake and river would be a good boost throughout the system.

Additional Comments - Please provide any other comments on the Master Plan or Shoreline Management Plan - or - provide information about issues you feel deserve more study:

My two cents on upgrades in the lake. A boat run with poles or buoys from okay landing to the lake, probably by the railroad trussel. A better marked boat run with more buoys or poles from yarabourgh landing to the main lake boat runs. That's the only thing I think of at this point

From: [noreply@dma.mil](mailto:noreply@dma.mil)  
To: [CESWI-MillwoodLakeMPandSMPRevision](#)  
Subject: Public Comment Submission for Millwood Lake SMP / MP  
Date: Wednesday, December 9, 2020 4:31:08 PM

---

Name / Organization:

Address:

E-Mail:

Phone:

How would you like to see Millwood Lake in 20 years? What changes, if any, would you like to see at the lake:

What about Millwood Lake is most and least important to you:

Please provide your comments and suggestions on items to update in the Millwood Lake Shoreline Management Plan (SMP) - Areas of discussion might include: current zoning, current policies on dock and vegetation permits, how the lake could be better managed. Please be as specific as possible:

Additional Comments - Please provide any other comments on the Master Plan or Shoreline Management Plan - or - provide information about issues you feel deserve more study:

## Privacy Act of 1974, 5 U.S.C. § 552a

More good vegetation on the main lake there is very little good grass left the bottom has turned to mush not good and hard for fish to spawn

Most is habitat for the fish least swimming

-----  
HTTP\_CMS\_CLIENT\_IP:  
HTTP\_X\_ARR\_LOG\_ID: bc180f92-908c-4dfc-bcb7-005831aad497  
HTTP\_ORIGIN: <https://www.swl.usace.army.mil>  
HTTP\_TRUE\_CLIENT\_IP: 2600:387:1:809::49

From: [noreply@dma.mil](mailto:noreply@dma.mil)  
To: [CESWL-MillwoodLakeMPandSMPRevision](#)  
Subject: Public Comment Submission for Millwood Lake SMP / MP  
Date: Thursday, December 10, 2020 4:24:41 PM

---

Name / Organization:

Address:

E-Mail:

Phone:

## Privacy Act of 1974, 5 U.S.C. § 552a

How would you like to see Millwood Lake in 20 years? What changes, if any, would you like to see at the lake:

First, we need to get serious about draw downs. They the most important thing to kill the floating vegetation and to creat good vegetation. Second we need to add two feet to normal pool so maneuverability can be achieved. Third safety should actually be first. The river markings are not given enough attention. These markers provide new comers and old timers the ability to see river channel. We also need to keep the river more stable if possible. Fish cannot thrive in a continuous change in current and elevation. I grew up fishing this lake and river and has never been more unstable than the past several years.

What about Millwood Lake is most and least important to you:

Well the most important thing about mill wood is water supply but fishing is a close second. Fishing on this lake is it's only recreation. Least important I guess would be protecting alligators.

Please provide your comments and suggestions on items to update in the Millwood Lake Shoreline Management Plan (SMP) - Areas of discussion might include: current zoning, current policies on dock and vegetation permits, how the lake could be better managed. Please be as specific as possible:

One thing that would help shoreline is to keep the river as stable as possible there is way to much level fluctuation even in dry conditions.

Additional Comments - Please provide any other comments on the Master Plan or Shoreline Management Plan - or - provide information about issues you feel deserve more study:

From: [noreply@dma.mil](mailto:noreply@dma.mil)  
To: [CESWL-MillwoodLakeMPandSMPRevision](#)  
Subject: Public Comment Submission for Millwood Lake SMP / MP  
Date: Thursday, December 10, 2020 8:42:52 AM

Name / Organization:

Address:

E-Mail:

Phone:

How would you like to see Millwood Lake in 20 years? What changes, if any, would you like to see at the lake:

What about Millwood Lake is most and least important to you:

Please provide your comments and suggestions on items to update in the Millwood Lake Shoreline Management Plan (SMP) - Areas of discussion might include: current zoning, current policies on dock and vegetation permits, how the lake could be better managed. Please be as specific as possible:

Additional Comments - Please provide any other comments on the Master Plan or Shoreline Management Plan - or - provide information about issues you feel deserve more study:

## Privacy Act of 1974, 5 U.S.C. § 552a

could use a good grading of east run road by the river

all

-----  
HTTP\_CMS\_CLIENT\_IP:  
HTTP\_X\_ARR\_LOG\_ID: 54250c72-9624-4c4a-b06f-2049ec14ea8b  
HTTP\_ORIGIN: <https://www.swl.usace.army.mil>  
HTTP\_TRUE\_CLIENT\_IP: 107.77.201.77



From: [noreply@dma.mil](mailto:noreply@dma.mil)  
To: [CESWL-MillwoodLakeMPandSMPRevision](#)  
Subject: Public Comment Submission for Millwood Lake SMP / MP  
Date: Thursday, December 10, 2020 6:08:12 PM

---

Name / Organization:

Address:

E-Mail:

Phone:

How would you like to see Millwood Lake in 20 years? What changes, if any, would you like to see at the lake:

What about Millwood Lake is most and least important to you:

Please provide your comments and suggestions on items to update in the Millwood Lake Shoreline Management Plan (SMP) - Areas of discussion might include: current zoning, current policies on dock and vegetation permits, how the lake could be better managed. Please be as specific as possible:

Additional Comments - Please provide any other comments on the Master Plan or Shoreline Management Plan - or - provide information about issues you feel deserve more study:

**Privacy Act of 1974, 5 U.S.C. § 552a**

Most important is the fishing and marker buoys out of line.

Yarborough boat ramp is extremely slick....4wd is even tough sometimes to pull your boat up the ramp.... can it be sanded?

-----  
HTTP\_CMS\_CLIENT\_IP:  
HTTP\_X\_ARR\_LOG\_ID: 4f05db44-443c-40c5-93de-33f97780247e  
HTTP\_ORIGIN: <https://www.swl.usace.army.mil>  
HTTP\_TRUE\_CLIENT\_IP: 208.80.167.70

From: [noreply@dma.mil](mailto:noreply@dma.mil)  
To: [CESWL-MillwoodLakeMPandSMPRevision](#)  
Subject: Public Comment Submission for Millwood Lake SMP / MP  
Date: Friday, December 11, 2020 11:24:12 AM

---

Name / Organization:

Address:

E-Mail:

Phone:

How would you like to see Millwood Lake in 20 years? What changes, if any, would you like to see at the lake:

What about Millwood Lake is most and least important to you:

Please provide your comments and suggestions on items to update in the Millwood Lake Shoreline Management Plan (SMP) - Areas of discussion might include: current zoning, current policies on dock and vegetation permits, how the lake could be better managed. Please be as specific as possible:

Additional Comments - Please provide any other comments on the Master Plan or Shoreline Management Plan - or - provide information about issues you feel deserve more study:

## Privacy Act of 1974, 5 U.S.C. § 552a

Raise the level 3-4 ft permanently. Maybe that would help the main lake. It is essentially a waisted body of open water.

Fishing

-----  
HTTP\_CMS\_CLIENT\_IP:  
HTTP\_X\_ARR\_LOG\_ID: c75c2bec-96ab-43c9-932a-81d39c4d7214  
HTTP\_ORIGIN: <https://www.swl.usace.army.mil>  
HTTP\_TRUE\_CLIENT\_IP: 174.137.5.9

From: [noreply@dma.mil](mailto:noreply@dma.mil)  
To: [CESWL-MillwoodLakeMPandSMPRevision](#)  
Subject: Public Comment Submission for Millwood Lake SMP / MP  
Date: Wednesday, December 9, 2020 11:13:58 PM

---

Name / Organization:

Address:

E-Mail:

Phone:

## Privacy Act of 1974, 5 U.S.C. § 552a

How would you like to see Millwood Lake in 20 years? What changes, if any, would you like to see at the lake:

1. The boat lanes need to be clearly marked on Little River. USACE puts buoys out multiple times each year, but they rarely last longer than the next rainfall. A trail needs to be marked with poles the same way they are on the main lake trails. Dozens of tournaments begin and end at Yarborough Landing each year and many boats hit stumps on their way. 2. The boat launches around the lake are mostly terrible. Many of the launches leave no option other than to pull your boat onto rocks or concrete, and the Beards Bluff launch in particular is very dangerous if the wind shifts the wrong way. A small amount of wind on Millwood is very dangerous.

What about Millwood Lake is most and least important to you:

Most important to me is the fishing.

Please provide your comments and suggestions on items to update in the Millwood Lake Shoreline Management Plan (SMP) - Areas of discussion might include: current zoning, current policies on dock and vegetation permits, how the lake could be better managed. Please be as specific as possible:

Additional Comments - Please provide any other comments on the Master Plan or Shoreline Management Plan - or - provide information about issues you feel deserve more study:

From: [noreply@dma.mil](mailto:noreply@dma.mil)  
To: [CESWL-MillwoodLakeMPandSMPRevision](#)  
Subject: Public Comment Submission for Millwood Lake SMP / MP  
Date: Wednesday, December 9, 2020 5:31:16 PM

---

Name / Organization:

Address:

E-Mail:

Phone:

How would you like to see Millwood Lake in 20 years? What changes, if any, would you like to see at the lake:

What about Millwood Lake is most and least important to you:

Please provide your comments and suggestions on items to update in the Millwood Lake Shoreline Management Plan (SMP) - Areas of discussion might include: current zoning, current policies on dock and vegetation permits, how the lake could be better managed. Please be as specific as possible:

Additional Comments - Please provide any other comments on the Master Plan or Shoreline Management Plan - or - provide information about issues you feel deserve more study:

## Privacy Act of 1974, 5 U.S.C. § 552a

Problem 1. Silt. Please do whatever is necessary to remove the silt. If you don't tackle this problem, anything else you do is going to be of minimal. Millwood is a shallow lake. With all the creeks silted in, few people fish the open lake.

See above.

-----  
HTTP\_CMS\_CLIENT\_IP:  
HTTP\_X\_ARR\_LOG\_ID: e6a7a702-3f5c-4989-a9ae-10f53c74b50d  
HTTP\_ORIGIN: <https://www.swl.usace.army.mil>  
HTTP\_TRUE\_CLIENT\_IP: 173.185.207.120

From: [noreply@dma.mil](mailto:noreply@dma.mil)  
To: [CESWL-MillwoodLakeMPandSMPRevision](#)  
Subject: Public Comment Submission for Millwood Lake SMP / MP  
Date: Wednesday, December 9, 2020 5:16:00 PM

---

Name / Organization:

Address:

E-Mail:

Phone:

How would you like to see Millwood Lake in 20 years? What changes, if any, would you like to see at the lake:

What about Millwood Lake is most and least important to you:

Please provide your comments and suggestions on items to update in the Millwood Lake Shoreline Management Plan (SMP) - Areas of discussion might include: current zoning, current policies on dock and vegetation permits, how the lake could be better managed. Please be as specific as possible:

Additional Comments - Please provide any other comments on the Master Plan or Shoreline Management Plan - or - provide information about issues you feel deserve more study:

## Privacy Act of 1974, 5 U.S.C. § 552a

4 foot drawdown for a year or longer to try to harden the bottom of the lake and promote grass growth. Then raise the level 2 foot above what normal is now and hold it there as the new level

Keeping it as a well known established fishery with lots of markers clearly marking the runs making it easier for visitors to navigate that travel here to spend time on the lake

-----  
HTTP\_CMS\_CLIENT\_IP:  
HTTP\_X\_ARR\_LOG\_ID: cf693969-2c78-4490-a41a-48661533e0af  
HTTP\_ORIGIN: <https://www.swl.usace.army.mil>  
HTTP\_TRUE\_CLIENT\_IP: 98.19.214.255

From: [noreply@dma.mil](mailto:noreply@dma.mil)  
To: [CESWI-MillwoodLakeMPandSMPRevision](#)  
Subject: Public Comment Submission for Millwood Lake SMP / MP  
Date: Wednesday, December 9, 2020 5:12:52 PM

---

Name / Organization:

Address:

E-Mail:

Phone:

How would you like to see Millwood Lake in 20 years? What changes, if any, would you like to see at the lake:

What about Millwood Lake is most and least important to you:

Please provide your comments and suggestions on items to update in the Millwood Lake Shoreline Management Plan (SMP) - Areas of discussion might include: current zoning, current policies on dock and vegetation permits, how the lake could be better managed. Please be as specific as possible:

Additional Comments - Please provide any other comments on the Master Plan or Shoreline Management Plan - or - provide information about issues you feel deserve more study:

## Privacy Act of 1974, 5 U.S.C. § 552a

Either raise lake 2ft or dredge main lake in boat lanes and stop opening the gates right before every major tournament that gets scheduled. Spray vegetation to keep it spreading.

The fishing and the control of the gates before major tournaments

-----  
HTTP\_CMS\_CLIENT\_IP:  
HTTP\_X\_ARR\_LOG\_ID: f55d396b-f60d-4b3e-8351-2e74f1f7b7de  
HTTP\_ORIGIN: <https://www.swl.usace.army.mil>  
HTTP\_TRUE\_CLIENT\_IP: 96.19.37.26



From: [noreply@dma.mil](mailto:noreply@dma.mil)  
To: [CESWL-MillwoodLakeMPandSMPRevision](#)  
Subject: Public Comment Submission for Millwood Lake SMP / MP  
Date: Thursday, December 10, 2020 7:35:16 AM

---

Name / Organization:

Address:

E-Mail:

Phone:

How would you like to see Millwood Lake in 20 years? What changes, if any, would you like to see at the lake:

What about Millwood Lake is most and least important to you:

Please provide your comments and suggestions on items to update in the Millwood Lake Shoreline Management Plan (SMP) - Areas of discussion might include: current zoning, current policies on dock and vegetation permits, how the lake could be better managed. Please be as specific as possible:

Additional Comments - Please provide any other comments on the Master Plan or Shoreline Management Plan - or - provide information about issues you feel deserve more study:

## Privacy Act of 1974, 5 U.S.C. § 552a

I would love to see the lake level be raised because of sedation there are places you cannot get to anymore and the shallow water remains muddy almost all the year.  
Control some of vegetation, if possible.

Most: Fishing and Cyprus trees and scenery

Least: its all important to me.

-----  
HTTP\_CMS\_CLIENT\_IP:  
HTTP\_X\_ARR\_LOG\_ID: f4649def-b962-426c-b500-d6908f3cd6b2  
HTTP\_ORIGIN: <https://www.swl.usace.army.mil>  
HTTP\_TRUE\_CLIENT\_IP: 98.18.63.177

From: [noreply@dma.mil](mailto:noreply@dma.mil)  
To: [CESWL-MillwoodLakeMPandSMPRevision](#)  
Subject: Public Comment Submission for Millwood Lake SMP / MP  
Date: Wednesday, December 9, 2020 10:52:08 PM

---

Name / Organization:

Address:

E-Mail:

Phone:

## Privacy Act of 1974, 5 U.S.C. § 552a

How would you like to see Millwood Lake in 20 years? What changes, if any, would you like to see at the lake:

Most of the floating grass needs to go now days people have mud boats and if you go across the grass and there is a stump out of the water with a mud boat it will tear up your equipment. I think the lake needs to come up 12-15 foot at least and let all of the grass float up in the trees or down the river and then open the gates wide open to leave the grass high and dry on land and in trees so it will clean up the water some.

What about Millwood Lake is most and least important to you:

Most important is the millet planted last year and the boat runs would be nice to have into areas and least important is the stumps

Please provide your comments and suggestions on items to update in the Millwood Lake Shoreline Management Plan (SMP) - Areas of discussion might include: current zoning, current policies on dock and vegetation permits, how the lake could be better managed. Please be as specific as possible:

Raise the lake high or kill the grass with poison so it does not take over and the reeds over around okay landing are taking over

Additional Comments - Please provide any other comments on the Master Plan or Shoreline Management Plan - or - provide information about issues you feel deserve more study:

---

HTTP\_CMS\_CLIENT\_IP:  
HTTP\_X\_ARR\_LOG\_ID: 04b374d9-2157-40e3-abe7-a2a10d1398e9  
HTTP\_ORIGIN: <https://www.swl.usace.army.mil>



From: [noreply@dma.mil](mailto:noreply@dma.mil)  
To: [CESWL-MillwoodLakeMPandSMPRevision](#)  
Subject: Public Comment Submission for Millwood Lake SMP / MP  
Date: Thursday, December 10, 2020 8:30:59 PM

---

Name / Organization:

Address:

E-Mail:

Phone:

How would you like to see Millwood Lake in 20 years? What changes, if any, would you like to see at the lake:

What about Millwood Lake is most and least important to you:

Please provide your comments and suggestions on items to update in the Millwood Lake Shoreline Management Plan (SMP) - Areas of discussion might include: current zoning, current policies on dock and vegetation permits, how the lake could be better managed. Please be as specific as possible:

Additional Comments - Please provide any other comments on the Master Plan or Shoreline Management Plan - or - provide information about issues you feel deserve more study:

## Privacy Act of 1974, 5 U.S.C. § 552a

Reduced alligator population. They have become a nuisance and make night fishing and yo yo/trotlining very difficult and dangerous.

Also, there needs to be better vegetation control.

Most important is quantity and quality of crappie and bass in the lake. I cannot think of a least important item.

-----  
HTTP\_CMS\_CLIENT\_IP:  
HTTP\_X\_ARR\_LOG\_ID: ff5c1c51-da62-4f8b-9e60-7b328986c94a  
HTTP\_ORIGIN: <https://www.swl.usace.army.mil>  
HTTP\_TRUE\_CLIENT\_IP: 2600:100b:b104:90f6:414a:c162:beba:7669

From: [noreply@dma.mil](mailto:noreply@dma.mil)  
 To: [CESWL-MillwoodLakeMPandSMPRevision](#)  
 Subject: Public Comment Submission for Millwood Lake SMP / MP  
 Date: Wednesday, December 9, 2020 2:58:46 PM

Name / Organization:

Address:

E-Mail:

Phone:

## Privacy Act of 1974, 5 U.S.C. § 552a

How would you like to see Millwood Lake in 20 years? What changes, if any, would you like to see at the lake:

We would like to see the Little River channel marked with the telephone poles like they did all the boat lanes we were involved with helping the USACE back in late 1990's with Steve Spicer. It would help to also mark the Saline River channel with the poles as well from Cottonshed up to the river channel where it goes into the woods and where Saline exits the river bank. This would eliminate the associated costs of maintenance and the constant replacement of the river buoys along Little River channel from Yarborough point to the open water in front of the dam. There are several broken telephone poles missing at the upper end of the boat lane from the Highline to the Little Gas Line boat lanes that have been broken/missing for a few years, and they need replacement urgently before someone gets hurt running that boat lane where they are missing! We would also like to see a sedimentation survey results (the sedimentation stakes cannot be found by latest USGS team) and how they plan to increase storage capacity of the lake to its original plan. With so much vegetation and siltation to Millwood, the storage plan is no longer as it was designed to hold capacities. Would LOVE to see USACE raise Millwood NCP elevation by at least 1 ft-msl, taking from 259.2 ft-msl now for normal elevation to 260.2 ft-msl or higher such that storage capacity could be increased, and more fish spawning habitat is created. We will assist the USACE in any endeavors, at any time, on a voluntary basis, to improve the project.

What about Millwood Lake is most and least important to you:

Millwood Lake needs higher storage capacity as it was originally designed to hold, due to siltation and sedimentation that has occurred over the last 30-50 years. We Would like to see a vegetation management plan to reduce alligator weeds and other nuisance vegetation that is currently choking off all the creeks, oxbows, and hampering navigation in a negative way, to improve navigation, thus resulting in higher recreation participation by the public, more income and revenue from Bass Tournaments, and other public recreation, that refuse to hold large turnout tournaments due to hampered navigation. Improved navigation, reduced vegetation, better management of the river channel markers, increased storage capacity, better spawning habitat creation by raising normal conservation pool a minimum of 1-2 feet of depth. More USACE campsites added to existing USACE

|  |  |
|--|--|
|  | campgrounds, resulting in additional revenue and public participation. We will assist the USACE in any endeavors, at any time, on a voluntary basis, to improve the project.   |
| <b>Please provide your comments and suggestions on items to update in the Millwood Lake Shoreline Management Plan (SMP) - Areas of discussion might include: current zoning, current policies on dock and vegetation permits, how the lake could be better managed. Please be as specific as possible:</b> | <p>Please institute a vegetation management plan to reduce alligator weeds and other nuisance vegetation that is currently choking off all the creeks, oxbows, and hampering navigation in a negative way, to improve navigation, thus resulting in higher recreation participation by the public, more income and revenue. In addition, better management of the river channel markers, increased storage capacity back to original design implementation such that the 259.2ft-msl is raised 1-2 ft-msl providing improved navigation. We will assist the USACE in any endeavors, at any time, on a voluntary basis, to improve the project.</p>   |
| <b>Additional Comments - Please provide any other comments on the Master Plan or Shoreline Management Plan - or - provide information about issues you feel deserve more study:</b>  | <ol style="list-style-type: none"> <li>1. Sedimentation stakes that were installed by USACE and marked with GPS could not even be located by USGS teams several years ago. This alone, defines the siltation/sedimentation issues as highly problematic. Millwood is not currently holding water capacity it was designed to hold to prevent flooding along the Red River system. Siltation and sedimentation has become a huge problem related to storage capacity and flooding, as well as reduced fish population spawning habitats, lake-wide.</li> <li>2. Locations that were previously holding 10-20 feet of depth, now are only holding 5-8 feet of depth, at most.</li> <li>3. River buoy markers are a constant maintenance and resource drain on the project. These floating river markers along Little River, need to be replaced with the same type of telephone pole marker system that is in current use by the boat lane marker systems, for a more permanent solution, thereby improving safety and navigation on the project, and reduction of maintenance expenses on a permanent basis.</li> <li>4. Implementation of a vegetation reduction plan to permanently reduce/eliminate the prolific alligator weeds impairing navigation- as well as a continual contributor to the siltation and sedimentation issue previously discussed.</li> </ol> <p>Thank you. We are doing our best to bring additional tourism &amp; client's dollars to the USACE &amp; Millwood Lake project, USACE campgrounds, and Millwood State Park. We are MillwoodGuideServicedotcom for over 31 years, where you can view and see our contributions and assistance to the USACE project. We need your assistance to make that continue to happen. We will assist the USACE in any endeavors, at any time, on a voluntary basis, to improve the project.</p> |

-----  
 HTTP\_CMS\_CLIENT\_IP:

From: [noreply@dma.mil](mailto:noreply@dma.mil)  
To: [CESWL-MillwoodLakeMPandSMPRevision](#)  
Subject: Public Comment Submission for Millwood Lake SMP / MP  
Date: Thursday, December 10, 2020 7:05:20 AM

---

Name / Organization:

Address:

E-Mail:

Phone:

How would you like to see Millwood Lake in 20 years? What changes, if any, would you like to see at the lake:

What about Millwood Lake is most and least important to you:

Please provide your comments and suggestions on items to update in the Millwood Lake Shoreline Management Plan (SMP) - Areas of discussion might include: current zoning, current policies on dock and vegetation permits, how the lake could be better managed. Please be as specific as possible:

Additional Comments - Please provide any other comments on the Master Plan or Shoreline Management Plan - or - provide information about issues you feel deserve more study:

## Privacy Act of 1974, 5 U.S.C. § 552a

Raise normal pool 2ft, it would create excellent habitat and security for spawning fish. Just as well it would make navigating safer, and easier on equipment.

The water turkeys

-----  
HTTP\_CMS\_CLIENT\_IP:  
HTTP\_X\_ARR\_LOG\_ID: 932d4c25-1c70-4ea7-a0a9-1fe56d12be07  
HTTP\_ORIGIN: <https://www.swl.usace.army.mil>  
HTTP\_TRUE\_CLIENT\_IP: 2600:100c:b219:5e24:8149:afbc:a715:75e8



From: [noreply@dma.mil](mailto:noreply@dma.mil)  
To: [CESWL-MillwoodLakeMPandSMPRevision](#)  
Subject: Public Comment Submission for Millwood Lake SMP / MP  
Date: Wednesday, December 9, 2020 5:56:52 PM

Name / Organization:

Address:

E-Mail:

Phone:

How would you like to see Millwood Lake in 20 years? What changes, if any, would you like to see at the lake:

What about Millwood Lake is most and least important to you:

Please provide your comments and suggestions on items to update in the Millwood Lake Shoreline Management Plan (SMP) - Areas of discussion might include: current zoning, current policies on dock and vegetation permits, how the lake could be better managed. Please be as specific as possible:

Additional Comments - Please provide any other comments on the Master Plan or Shoreline Management Plan - or - provide information about issues you feel deserve more study:

## Privacy Act of 1974, 5 U.S.C. § 552a

Remove stumps fix boat ramps like paraloma

Fishing is most important plus duck habitat.

-----  
HTTP\_CMS\_CLIENT\_IP:  
HTTP\_X\_ARR\_LOG\_ID: e3505157-93af-4e03-81ec-2e28fd572bf0  
HTTP\_ORIGIN: <https://www.swl.usace.army.mil>  
HTTP\_TRUE\_CLIENT\_IP: 174.247.241.40

From: [noreply@dma.mil](mailto:noreply@dma.mil)  
To: [CESWL-MillwoodLakeMPandSMPRevision](#)  
Subject: Public Comment Submission for Millwood Lake SMP / MP  
Date: Thursday, December 10, 2020 5:11:19 AM

---

Name / Organization:

Address:

E-Mail:

Phone:

How would you like to see Millwood Lake in 20 years? What changes, if any, would you like to see at the lake:

What about Millwood Lake is most and least important to you:

Please provide your comments and suggestions on items to update in the Millwood Lake Shoreline Management Plan (SMP) - Areas of discussion might include: current zoning, current policies on dock and vegetation permits, how the lake could be better managed. Please be as specific as possible:

Additional Comments - Please provide any other comments on the Master Plan or Shoreline Management Plan - or - provide information about issues you feel deserve more study:

## Privacy Act of 1974, 5 U.S.C. § 552a

I would like for the fishing pier at Beards Bluff to be rebuilt. I would also like more hiking trails around the lake and possible OHV trails

Most important: camping and fishing  
Least important : duck hunting

-----  
HTTP\_CMS\_CLIENT\_IP:  
HTTP\_X\_ARR\_LOG\_ID: 9ae84158-7a39-4120-ae80-c98c63cf7739  
HTTP\_ORIGIN: <https://www.swl.usace.army.mil>  
HTTP\_TRUE\_CLIENT\_IP: 216.238.12.199

From: [noreply@dma.mil](mailto:noreply@dma.mil)  
To: [CESWL-MillwoodLakeMPandSMPRevision](#)  
Subject: Public Comment Submission for Millwood Lake SMP / MP  
Date: Wednesday, December 9, 2020 11:11:46 PM

---

Name / Organization:

Address:

E-Mail:

Phone:

How would you like to see Millwood Lake in 20 years? What changes, if any, would you like to see at the lake:

What about Millwood Lake is most and least important to you:

Please provide your comments and suggestions on items to update in the Millwood Lake Shoreline Management Plan (SMP) - Areas of discussion might include: current zoning, current policies on dock and vegetation permits, how the lake could be better managed. Please be as specific as possible:

Additional Comments - Please provide any other comments on the Master Plan or Shoreline Management Plan - or - provide information about issues you feel deserve more study:

## Privacy Act of 1974, 5 U.S.C. § 552a

Cleared, more safe boat lanes as some boat lanes have logs in them that are not visible at night when water levels are elevated. Better service for phones at campgrounds like White Cliffs.

Hunting and fishing

-----  
HTTP\_CMS\_CLIENT\_IP:  
HTTP\_X\_ARR\_LOG\_ID: 8a147d64-8f91-4517-a07e-481db7396a02  
HTTP\_ORIGIN: <https://www.swl.usace.army.mil>  
HTTP\_TRUE\_CLIENT\_IP: 75.173.37.138



From: [noreply@dma.mil](mailto:noreply@dma.mil)  
To: [CESWL-MillwoodLakeMPandSMPRevision](#)  
Subject: Public Comment Submission for Millwood Lake SMP / MP  
Date: Wednesday, December 9, 2020 8:25:45 PM

---

Name / Organization:

Address:

E-Mail:

Phone:

How would you like to see Millwood Lake in 20 years? What changes, if any, would you like to see at the lake:

What about Millwood Lake is most and least important to you:

Please provide your comments and suggestions on items to update in the Millwood Lake Shoreline Management Plan (SMP) - Areas of discussion might include: current zoning, current policies on dock and vegetation permits, how the lake could be better managed. Please be as specific as possible:

Additional Comments - Please provide any other comments on the Master Plan or Shoreline Management Plan - or - provide information about issues you feel deserve more study:

## Privacy Act of 1974, 5 U.S.C. § 552a

I would like to see millwood as a place you can go and safely navigate through the markers and a place you can catch a trophy bass and crappie

The safty of people traveling or running across the lake or the river that is not marked anymore that is very unsafe if you are not from around here.

This past year the lilly pads were not bad but if we could get more coontail or whatever it seemed like that was better for the bass

-----  
HTTP\_CMS\_CLIENT\_IP:  
HTTP\_X\_ARR\_LOG\_ID: a69e6793-491f-4b86-9445-38dfa1005de4  
HTTP\_ORIGIN: <https://www.swl.usace.army.mil>  
HTTP\_TRUE\_CLIENT\_IP: 216.238.13.189

From: [noreply@dma.mil](mailto:noreply@dma.mil)  
To: [CESWL-MillwoodLakeMPandSMPRevision](#)  
Subject: Public Comment Submission for Millwood Lake SMP / MP  
Date: Wednesday, December 9, 2020 6:51:38 PM

---

Name / Organization:

Address:

E-Mail:

Phone:

How would you like to see Millwood Lake in 20 years? What changes, if any, would you like to see at the lake:

What about Millwood Lake is most and least important to you:

Please provide your comments and suggestions on items to update in the Millwood Lake Shoreline Management Plan (SMP) - Areas of discussion might include: current zoning, current policies on dock and vegetation permits, how the lake could be better managed. Please be as specific as possible:

Additional Comments - Please provide any other comments on the Master Plan or Shoreline Management Plan - or - provide information about issues you feel deserve more study:

## Privacy Act of 1974, 5 U.S.C. § 552a

I recently visited the arkansas river at pendleton ramp they had an amazing setup to weigh in fish and return them to the water with no casualties to the fish I would like to see this duplicated at yarborough landing for protection of the fish

-----  
HTTP\_CMS\_CLIENT\_IP:  
HTTP\_X\_ARR\_LOG\_ID: d12b9a61-2066-431a-82e8-330b46e7ca92  
HTTP\_ORIGIN: <https://www.swl.usace.army.mil>  
HTTP\_TRUE\_CLIENT\_IP: 199.33.104.254

From: [noreply@dma.mil](mailto:noreply@dma.mil)  
To: [CESWL-MillwoodLakeMPandSMPRevision](#)  
Subject: Public Comment Submission for Millwood Lake SMP / MP  
Date: Thursday, December 10, 2020 8:18:07 PM

---

Name / Organization:

Address:

E-Mail:

Phone:

How would you like to see Millwood Lake in 20 years? What changes, if any, would you like to see at the lake:

What about Millwood Lake is most and least important to you:

Please provide your comments and suggestions on items to update in the Millwood Lake Shoreline Management Plan (SMP) - Areas of discussion might include: current zoning, current policies on dock and vegetation permits, how the lake could be better managed. Please be as specific as possible:

Additional Comments - Please provide any other comments on the Master Plan or Shoreline Management Plan - or - provide information about issues you feel deserve more study:

**Privacy Act of 1974, 5 U.S.C. § 552a**

Raise, and keep the lake level by two-foot and six-inches year round. Also keep marker buoys out. And that would allow other issues solve themselves. Thank you for all that you already do.

-----  
HTTP\_CMS\_CLIENT\_IP:  
HTTP\_X\_ARR\_LOG\_ID: 1a32a40c-9494-4aac-a6b1-f44bacc93f72  
HTTP\_ORIGIN: <https://www.swl.usace.army.mil>  
HTTP\_TRUE\_CLIENT\_IP: 18.191.249.253

From: [noreply@dma.mil](mailto:noreply@dma.mil)  
To: [CESWL-MillwoodLakeMPandSMPRevision](#)  
Subject: Public Comment Submission for Millwood Lake SMP / MP  
Date: Wednesday, December 9, 2020 9:19:43 PM

|   |  |
|---|--|
| Name / Organization:  | <b>Privacy Act of 1974, 5 U.S.C. § 552a</b>  |
| Address:  |  |
| E-Mail:   |  |
| Phone:  |  |
| How would you like to see Millwood Lake in 20 years? What changes, if any, would you like to see at the lake:   | Raise level by at least 2 feet. Someway/ somehow bring back hydrila for the bass. Draw downs every year, enough to stabilize silt. Dredging main lake to make wind breaks , which would help with water clarity and access to areas on main lake. That would help bring back main lake. With timber fading away vegetation is the best for bass. |
| What about Millwood Lake is most and least important to you:  | Bass and crappie fishing. Most important! Least important camping .  |
| Please provide your comments and suggestions on items to update in the Millwood Lake Shoreline Management Plan (SMP) - Areas of discussion might include: current zoning, current policies on dock and vegetation permits, how the lake could be better managed. Please be as specific as possible: | At least 4 ramps should be maintained on lake for access and at least 2 on river. Tournament site to hold major bass and crappie tournaments, to bring revenue to area, as far as docks, as long as they are maintained, they make good habitat for fish and could generate more revenue.  |
| Additional Comments - Please provide any other comments on the Master Plan or Shoreline Management Plan - or - provide information about issues you feel deserve more study:  | Something has to be done. The lake itself is just about dead. Wind keeps it muddy and old spawning goods are silted in. Up river is about all that is left. To beautiful of a lake just to let it die.   |

-----  
HTTP\_CMS\_CLIENT\_IP:  
HTTP\_X\_ARR\_LOG\_ID: 13e4c50c-586e-447a-a433-3f94ad7a6064  
HTTP\_ORIGIN: <https://www.swl.usace.army.mil>  
HTTP\_TRUE\_CLIENT\_IP: 199.33.107.150

From: [noreply@dma.mil](mailto:noreply@dma.mil)  
To: [CESWL-MillwoodLakeMPandSMPRevision](#)  
Subject: Public Comment Submission for Millwood Lake SMP / MP  
Date: Wednesday, December 9, 2020 7:38:55 PM

---

|   |  |
|---|--|
| Name / Organization:  | <b>Privacy Act of 1974, 5 U.S.C. § 552a</b>  |
| Address:  |  |
| E-Mail:   |  |
| Phone:  |  |
| How would you like to see Millwood Lake in 20 years? What changes, if any, would you like to see at the lake:   | <p>I would like to see Millwood a trophy fishery (bass and crappie)<br/>*More restroom facility at most ramps especially Yarbrough<br/>*Yarborough needs a better pier.<br/>*Better boat lanes, there are still stomps in the lanes.</p> <p>These would greatly help Millwood.</p> <p>Thank you for making an effort to better our lakes and facilities.</p> |
| What about Millwood Lake is most and least important to you:  | <p>The fishing that's the only thing to focus on Millwood lake.<br/>Stock and keep the lake healthy.</p>   |
| Please provide your comments and suggestions on items to update in the Millwood Lake Shoreline Management Plan (SMP) - Areas of discussion might include: current zoning, current policies on dock and vegetation permits, how the lake could be better managed. Please be as specific as possible: | <p>KEEP THE VEGETATION.<br/>We all have seen the results of DeGray.</p> <p>A better pier at Yarbrough and restrooms</p>  |
| Additional Comments - Please provide any other comments on the Master Plan or Shoreline Management Plan - or - provide information about issues you feel deserve more study:  | <p>Fish stocking if possible</p>   |

-----  
HTTP\_CMS\_CLIENT\_IP:  
HTTP\_X\_ARR\_LOG\_ID: b5cb3e0e-0dc6-40d2-9fcf-3d546cce686f



Gentlemen:

1-20-21

Privacy Act of 1974, 5 U.S.C. § 552a

Privacy Act of 1974, 5 U.S.C. § 552a

I have seen

Many Things happen to this lake! There used to be Shotgun Starts Fish Tournaments on Sat. Mornings @ 6:00 A.M. from Senatoga landing. There used to be 3 landings on Senatoga landing. Now There is one. Sometimes It can't be used to Launch a Boat because when Fishermen have Parked in The Boat Ramp. There used to be, at The State Park & OK Landing, an overload of Boats in April & October with Surplus Trailers Parked along The access Road. There used to be License Plates from Illinois, Ohio, Indiana, Louisiana, Texas & Others? It used to be The Parks & Roadways were Mowed. Now They can be Billed.

The Question I ask myself is WHY?? are we in The Shape we are in Today. No one cares? Where are The people who used to come here to Fish? Is It because The Fish aren't There? Why? If The only Purpose of This Lake is flood control, you won't have to do any thing, we are already There. If we want a recreational lake, camping, Fishing, Sight Seeing etc. y'all have a long way to Go.

Privacy Act of 1974, 5 U.S.C. §  
552a

Aratoga Landing. On going during spring and summer season the party with a \$2500 came alive up, parks on boat ramp. The another party with \$60,000 boat can't get live on the boat in to go fishing. Best fishing pier back.

Beards Creek. Many delays and handicapped have lost the fishing pier. So much money spent on projects and more that would help so many.

Other water would be nice, not only for boaters landing and unloading without damaging their equipment, but more place for boat fishermen. Also also aid in spawning fish. The water would do not but properly also last forever.

The more people that fish, the more they spend. It helps the county and state of people in it. Also in the good old days. Money flowed like water due to fishing.

On fish can't spawn in 4 weeks the water would attract lots of fish - \$15k - Money - One successful fish spawn - 100,000 fish. It would be good for boom, base, and spring fishermen aren't going to catch on all.

Best ramp at Aratoga Landing is no use if water is - 2 ft more & it plus bottom and has been blown out with water thrust.



Comments for Charlotte Funding & Land  
Bank Camp grounds. ~~at~~ Don't spending money

## Appendix G

### Agency Scoping Comments



## ARKANSAS ENERGY & ENVIRONMENT

December 17, 2020

NRM Planner  
U.S. Army Corps of Engineers  
Little Rock District  
Via Email: [CESWL-MillwoodLakeMPandSMPRevision@usace.army.mil](mailto:CESWL-MillwoodLakeMPandSMPRevision@usace.army.mil)

RE: Millwood Lake Master Plan and Shoreline Management Plan Revision

To Whom It May Concern:

The Division of Environmental Quality (DEQ) appreciates the opportunity to comment on the revision to the Millwood Lake Master Plan and Shoreline Management Plan. At this stage of review, DEQ can provide only generalized comments on issues to consider during Environmental Assessment (EA) development. We request the opportunity to review both the draft and final EAs when available.

While the Office of Land Resources has no specific comments at this time, additional review may be required should the shoreline or flood relief footprints change.

The Office of Water Quality recommends that all necessary steps be taken to prevent or minimize erosion of materials and soils into surface waters. Proposed activities should include measures to protect both the water quality and designated uses of the waterways.

This letter is issued in reliance upon the statements and representations made in the submittal. DEQ has no responsibility for adequacy or proper functioning of the proposed project. Please contact the referenced offices with any questions.

Sincerely,

**Privacy Act of 1974, 5 U.S.C. § 552a**

From: [noreply@dma.mil](mailto:noreply@dma.mil)  
To: [CESWL-MillwoodLakeMPandSMPRevision](#)  
Subject: Public Comment Submission for Millwood Lake SMP / MP  
Date: Thursday, December 17, 2020 9:03:31 AM

---

Name / Organization:

Address:

E-Mail:

Phone:

How would you like to see Millwood Lake in 20 years? What changes, if any, would you like to see at the like:

What about Millwood Lake is most and least important to you:

Please provide your comments and suggestions on items to update in the Millwood Lake Shoreline Management Plan (SMP) - Areas of discussion might include: current zoning, current policies on dock and vegetation permits, how the lake could be better managed. Please be as specific as possible:

Additional Comments - Please provide any other comments on the Master Plan or Shoreline Management Plan - or - provide information about issues you feel deserve more study:

## Privacy Act of 1974, 5 U.S.C. § 552a

The only area of concern from the U.S. Fish and Wildlife Service is potential negative or positive effects to federally listed threatened or endangered species that might result from modifications to lake management. We are less concerned with shoreline management than management of pool elevations and dam releases. Federally listed species occur in streams upstream of the lake and in the Little River downstream of Millwood Dam. Any proposed changes that would modify the release volumes and schedules or change the extent of inundation in upstream tributaries would need to take into account possible effects to listed species. Consultation with the U.S. Fish and Wildlife Service per Sec. 7 of the Endangered Species Act is appropriate for any actions that may affect listed species.

-----  
HTTP\_CMS\_CLIENT\_IP:  
HTTP\_X\_ARR\_LOG\_ID: f6425ffa-a708-4206-b050-4b28a7b182f3  
HTTP\_ORIGIN: <https://www.swl.usace.army.mil>  
HTTP\_TRUE\_CLIENT\_IP: 2600:100b:b128:a1fa:f845:cb5e:fb1e:fadb

## **Privacy Act of 1974, 5 U.S.C. § 552a**

---

Good morning, please see comments from FEMA on this project:

Please ensure that you contact your local floodplain administrator and gather the proper floodplain permits prior to work.

Thank you,

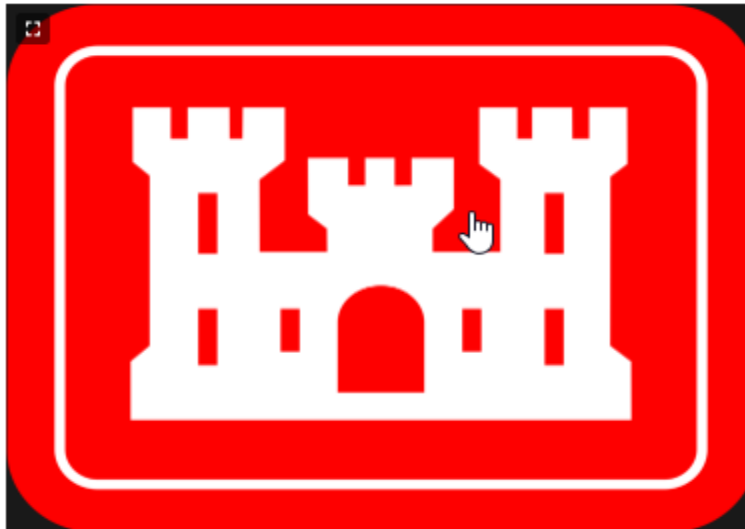
**Privacy Act of 1974, 5 U.S.C. §  
552a**



## Appendix H Media Coverage

## Corps of Engineers seeks input about Millwood Lake

Nov 24, 2020



f t e b

The U.S. Army Corps of Engineers is notifying the public that the scoping comment period for the Millwood Lake Master Plan and Shoreline Management Plan revisions has opened.

"Scoping" is the process of determining the scope, focus, and content of master plan (MP) and shoreline management plan (SMP) update documents. For a planning process such as the MP and SMP revision, the scoping process is used as an opportunity to get input from the public and resource agencies about the vision for the MP and SMP update and the issues that the MP and SMP should address where possible.

The MP guides the management of the government lands around Corps of Engineers reservoirs. It also affects future management of natural resources and recreational opportunities to ensure the sustainability of Millwood Lake. The planning process will include an analysis of potential effects on the natural and social environment, including fish and wildlife, recreation opportunities, economics, land use, cultural and historical resources, aesthetics, and public health and safety.



The SMP for Millwood Lake establishes policy and furnishes guidelines for the protection and preservation of the environmental characteristics of the shoreline while maintaining a balance between public and private shoreline uses.

[CLICK HERE](#) to find out more about the Millwood Lake MP and SMP.

**Apple Flats**  
Speech Pathology Clinic  
In network with most insurance.  
Speech and Language Intervention specializing in Brain Injury, Autism, Stuttering, Apraxia, and Dysphagia.  
Bonnie M. Vest • 870-510-2841  
2206 N. Jackson - Magnolia, AR

**MURPHY'S**  
A Jewelry Tradition Since 1927  
MURPHY'S JEWELRY

**Recipe for Making A Live Town**  
Adapted from the Columbia Banner  
Magnolia, Arkansas - January 25, 1890

1. Sell your building lots at a reasonable price. If you can afford to do so, donate land for some large business enterprise.
2. Induce businesses to locate in Magnolia and patronize them.
3. Always run up your own expenses when you visit places outside of Magnolia to buy goods.
4. Speak well of worthy public enterprises. If anything should be undertaken that may be of benefit to Magnolia, do not speak ill of it to others because you happen to be prejudiced against it.
5. Speak well to strangers of Magnolia and its people.
6. If you have surplus money, do not invest in far off speculations, but invest in Magnolia by establishing a profitable venture.

magnolia reporter

### Recent Headlines

**Mike McNeill's Diary for Wednesday, January 13, 2021: The three- or four-party system**  
2 hrs ago

SR Industries names chief