

Appendix C




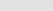
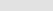
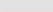
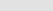

Millwood Lake Shoreline Management Plan No Action and Preferred Alternative Shoreline Allocation Maps

MAP SHEET INDEX ALTERNATIVE ONE (NO ACTION- 2012 PLAN)










 MAP SHEET INDEX

Legend

SHORELINE ALLOCATIONS

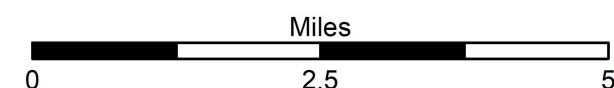
-  LIMITED DEVELOPMENT AREA
-  PUBLIC RECREATION AREA
-  PROHIBITED
-  PROTECTED (No Color Shown On Map)
-  Roads
-  State Highway
-  US Highway
-  Counties

LAND CLASSIFICATIONS

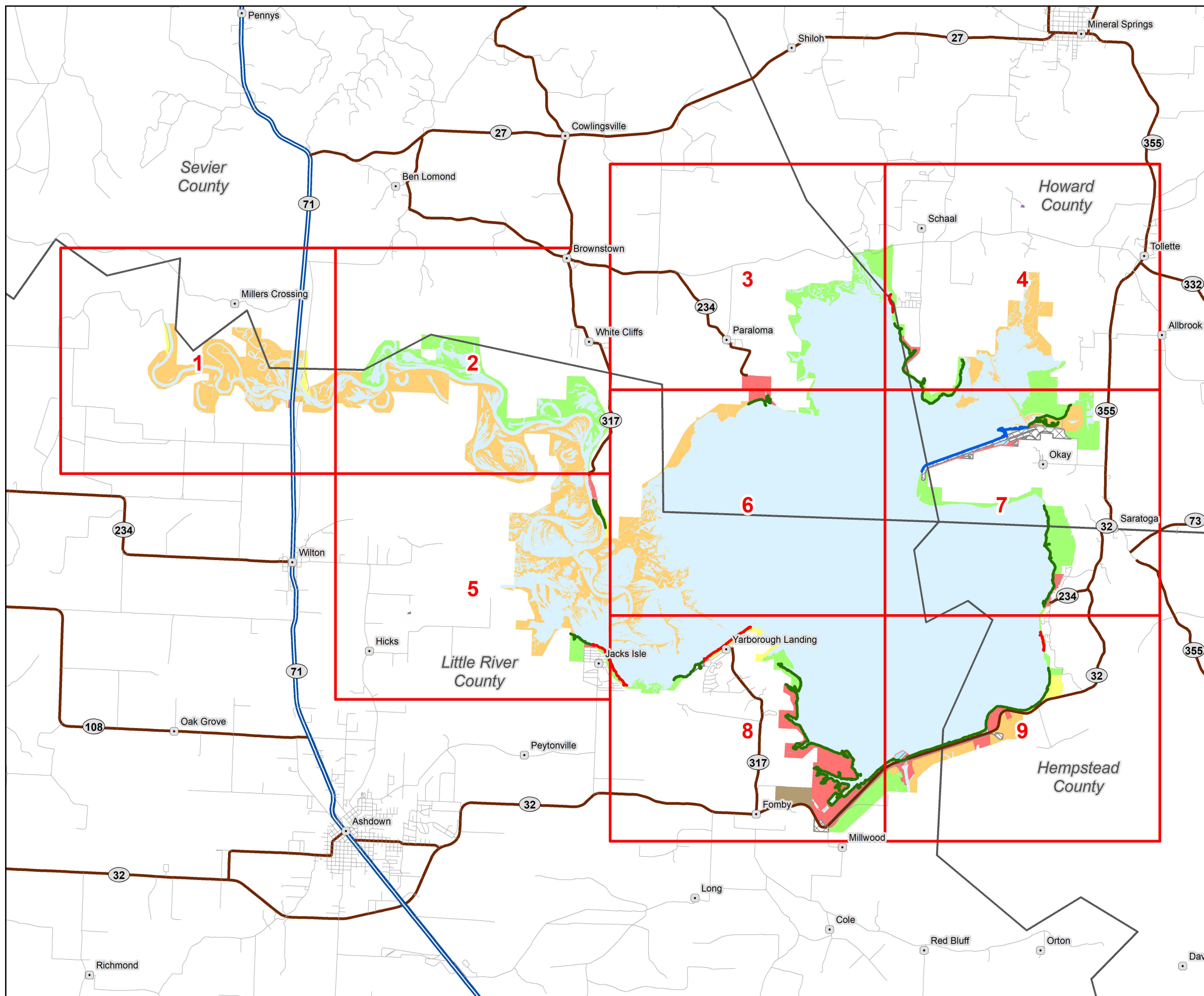
-  HIGH DENSITY
-  LOW DENSITY
-  WILDLIFE MANAGEMENT
-  VEGETATIVE MANAGEMENT
-  ENVIRONMENTALLY SENSITIVE
-  MITIGATION
-  PROJECT OPERATIONS
-  RESTRICTED
-  OPEN RECREATION

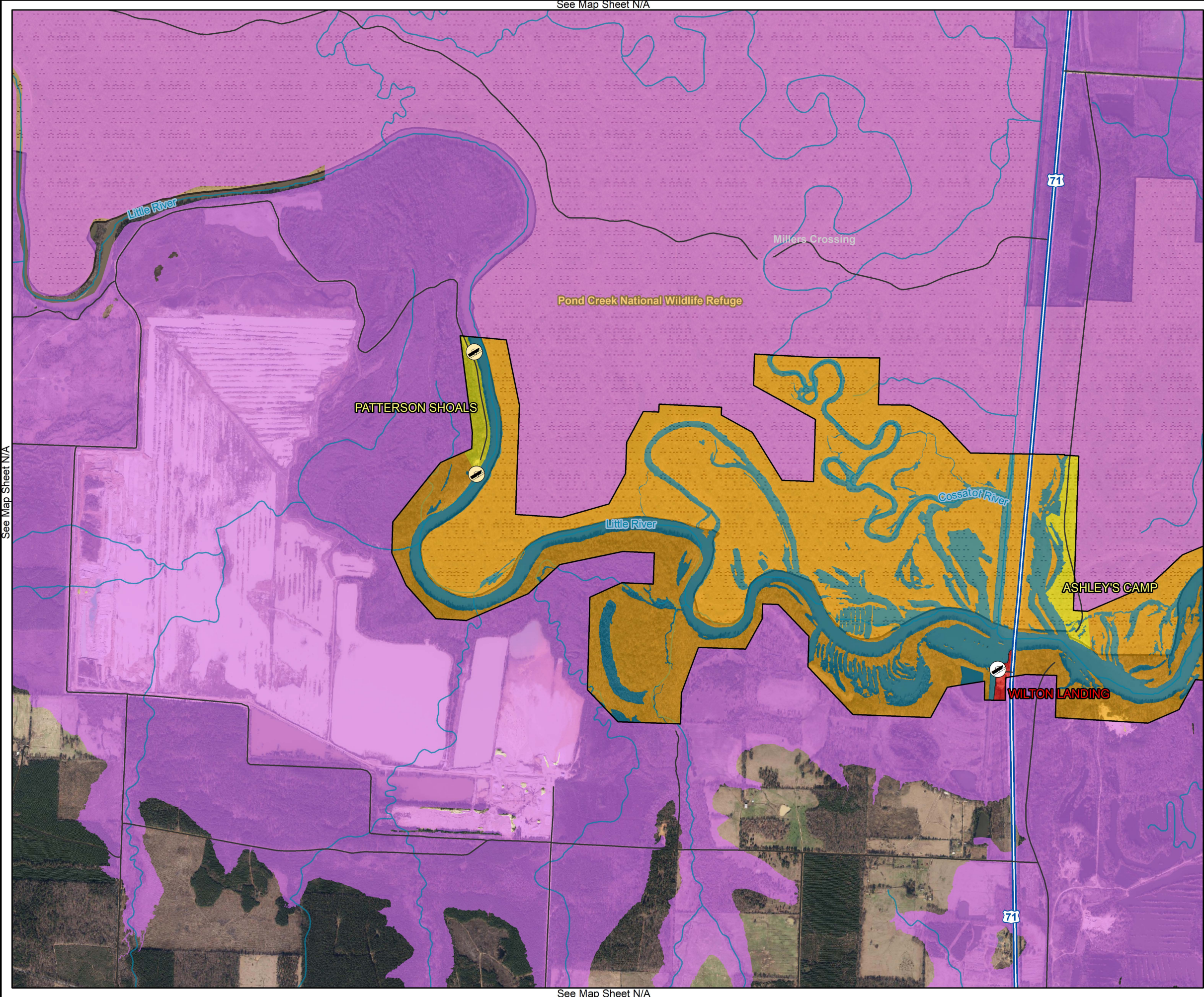


SHORELINE MANAGEMENT PLAN MILLWOOD LAKE



 **US ARMY CORPS
OF ENGINEERS**
Little Rock District
Millwood Lake





ALTERNATIVE ONE NO ACTION (2012 PLAN)

SHORELINE ALLOCATIONS

LIMITED DEVELOPMENT AREA

PUBLIC RECREATION AREA

PROHIBITED

PROTECTED (No Color Shown On Map)

Legend

Corps Operated Ramp

County Operated Ramp

Roads

US Highway

Rivers/Streams

National Wildlife Refuge

Flowage Easement

USACE Boundary

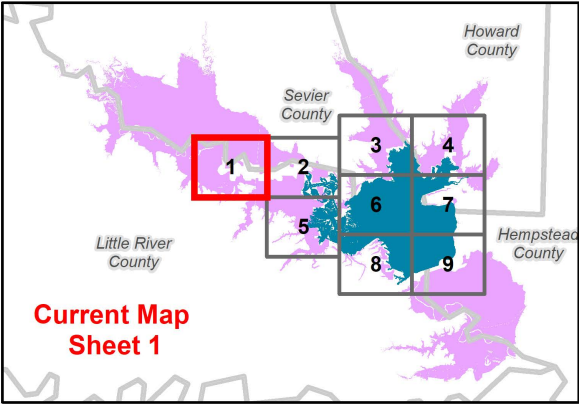
Preferred Land Classification

HIGH DENSITY

LOW DENSITY

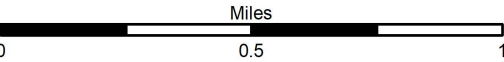
WILDLIFE MANAGEMENT

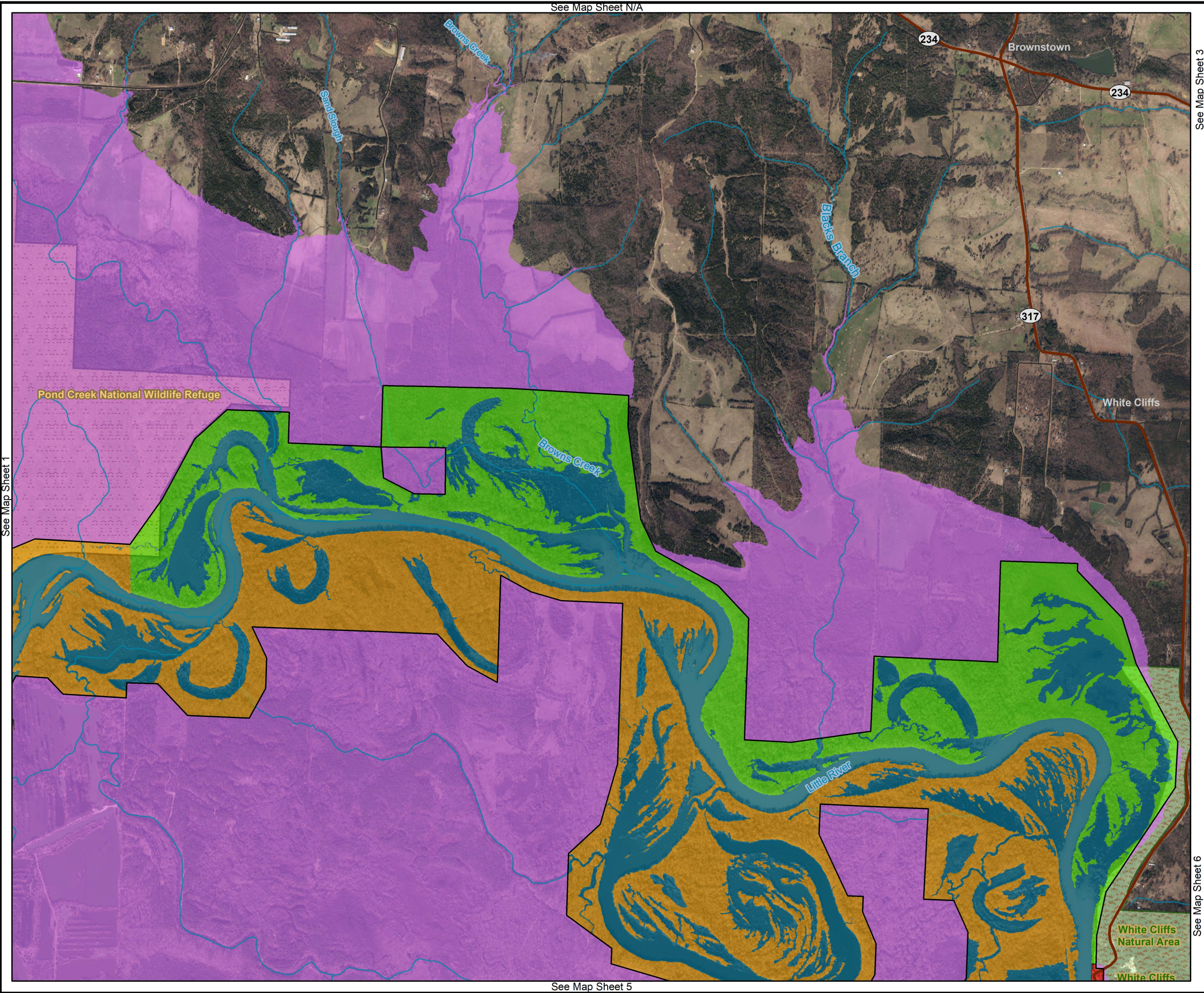
OPEN RECREATION



SHORELINE MANAGEMENT PLAN MILLWOOD LAKE

Imagery Date: 2017





ALTERNATIVE ONE NO ACTION (2012 PLAN)

SHORELINE ALLOCATIONS

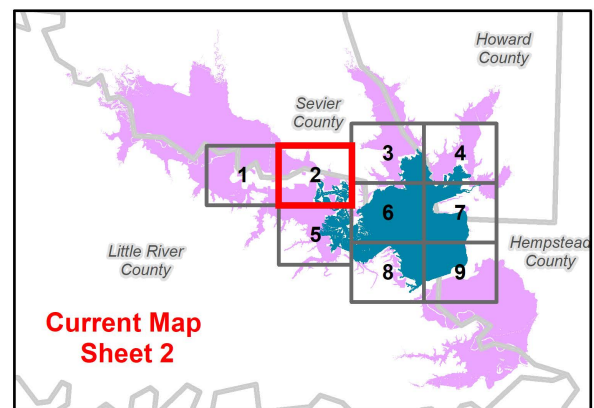
- LIMITED DEVELOPMENT AREA
- PUBLIC RECREATION AREA
- PROHIBITED
- PROTECTED (No Color Shown On Map)

Legend

- Roads
- State Highway
- Rivers/Streams
- National Wildlife Refuge
- Natural Area
- Flowage Easement
- USACE Boundary

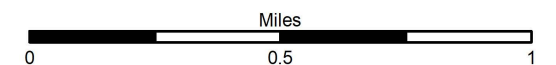
Preferred Land Classification

- HIGH DENSITY
- WILDLIFE MANAGEMENT
- ENVIRONMENTALLY SENSITIVE
- OPEN RECREATION



SHORELINE MANAGEMENT PLAN MILLWOOD LAKE

Imagery Date: 2017



See Map Sheet N/A

See Map Sheet 2

See Map Sheet 4

See Map Sheet 6

ALTERNATIVE ONE NO ACTION (2012 PLAN)

SHORELINE ALLOCATIONS

LIMITED DEVELOPMENT AREA

PUBLIC RECREATION AREA

PROHIBITED

PROTECTED (No Color Shown On Map)

Legend

Boat Lane

Roads

State Highway

Rivers/Streams

Flowage Easement

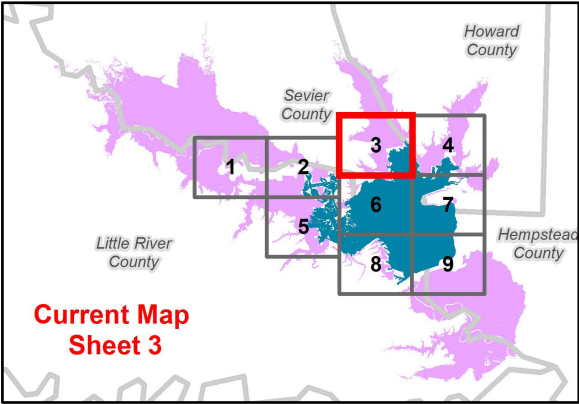
USACE Boundary

Preferred Land Classification

HIGH DENSITY

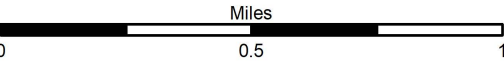
ENVIRONMENTALLY SENSITIVE

OPEN RECREATION



SHORELINE MANAGEMENT PLAN MILLWOOD LAKE

Imagery Date: 2017



See Map Sheet N/A

See Map Sheet 3

See Map Sheet N/A

See Map Sheet 7

ALTERNATIVE ONE NO ACTION (2012 PLAN)

SHORELINE ALLOCATIONS

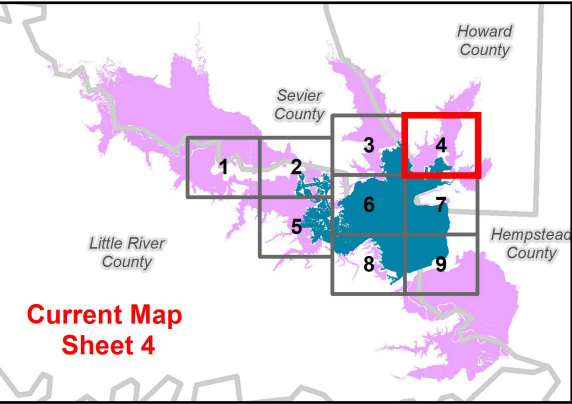
- LIMITED DEVELOPMENT AREA
- PUBLIC RECREATION AREA
- PROHIBITED
- PROTECTED (No Color Shown On Map)

Legend

- Corps Operated Ramp
- Boat Lane
- Roads
- State Highway
- Rivers/Streams
- Flowage Easement
- USACE Boundary

Preferred Land Classification

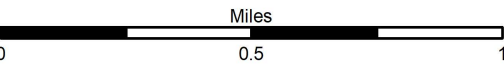
- HIGH DENSITY
- WILDLIFE MANAGEMENT
- ENVIRONMENTALLY SENSITIVE
- MITIGATION
- OPEN RECREATION

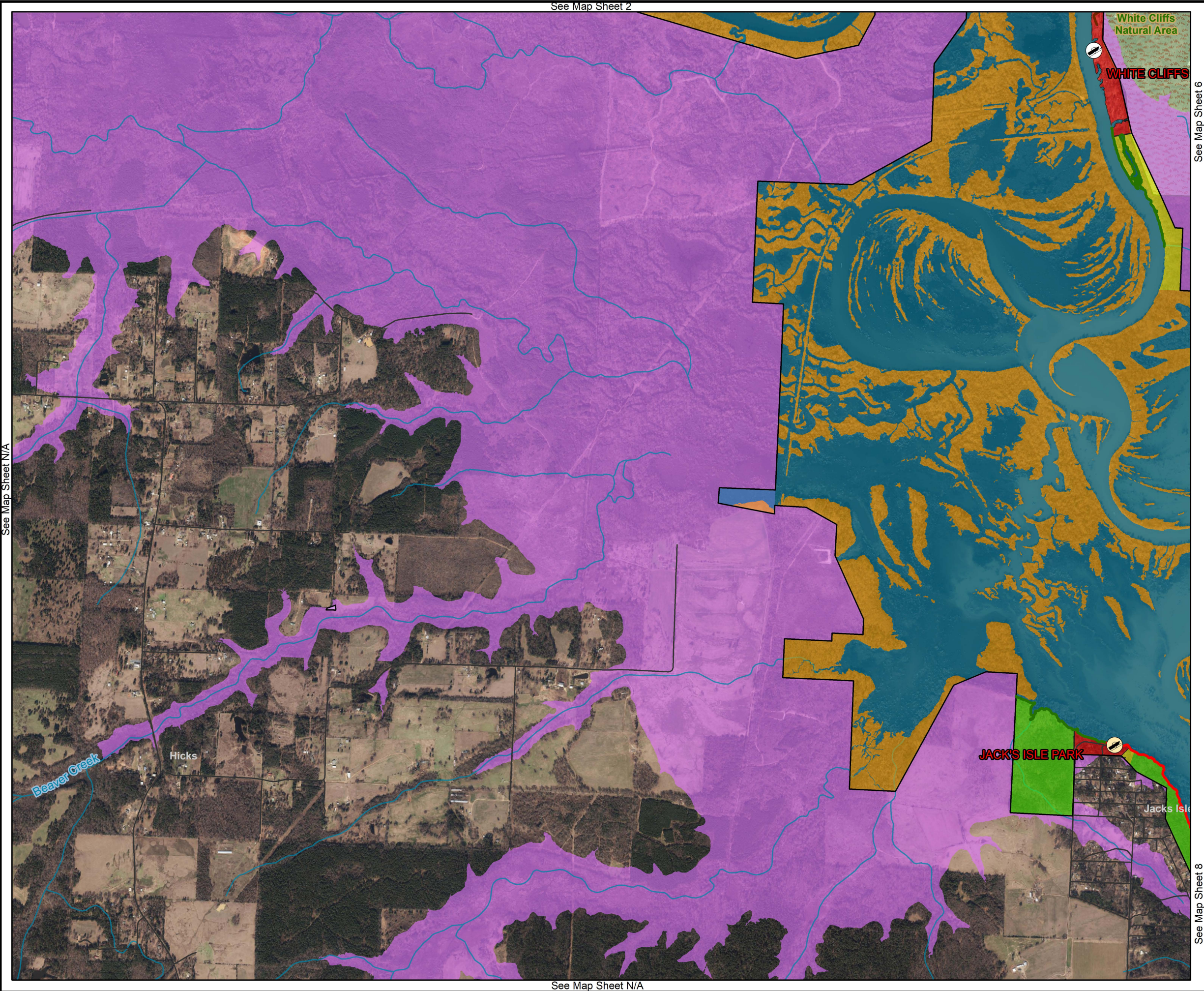


Current Map
Sheet 4

SHORELINE MANAGEMENT PLAN MILLWOOD LAKE

Imagery Date: 2017





ALTERNATIVE ONE NO ACTION (2012 PLAN)

SHORELINE ALLOCATIONS

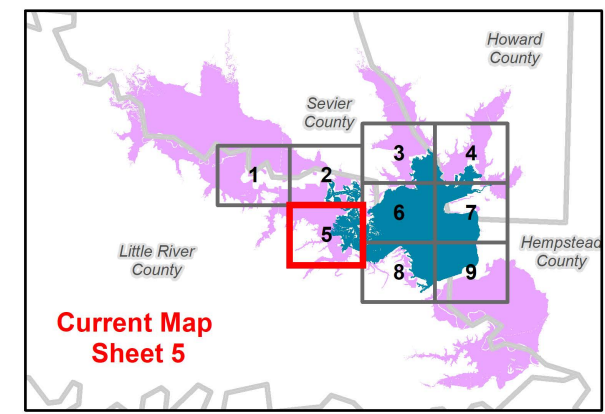
- LIMITED DEVELOPMENT AREA
- PUBLIC RECREATION AREA
- PROHIBITED
- PROTECTED (No Color Shown On Map)

Legend

- Corps Operated Ramp
- County Operated Ramp
- Roads
- State Highway
- Rivers/Streams
- Natural Area
- Flowage Easement
- USACE Boundary

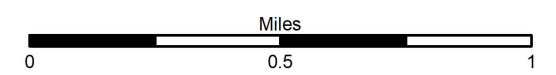
Preferred Land Classification

- HIGH DENSITY
- LOW DENSITY
- WILDLIFE MANAGEMENT
- ENVIRONMENTALLY SENSITIVE
- MITIGATION
- OPEN RECREATION

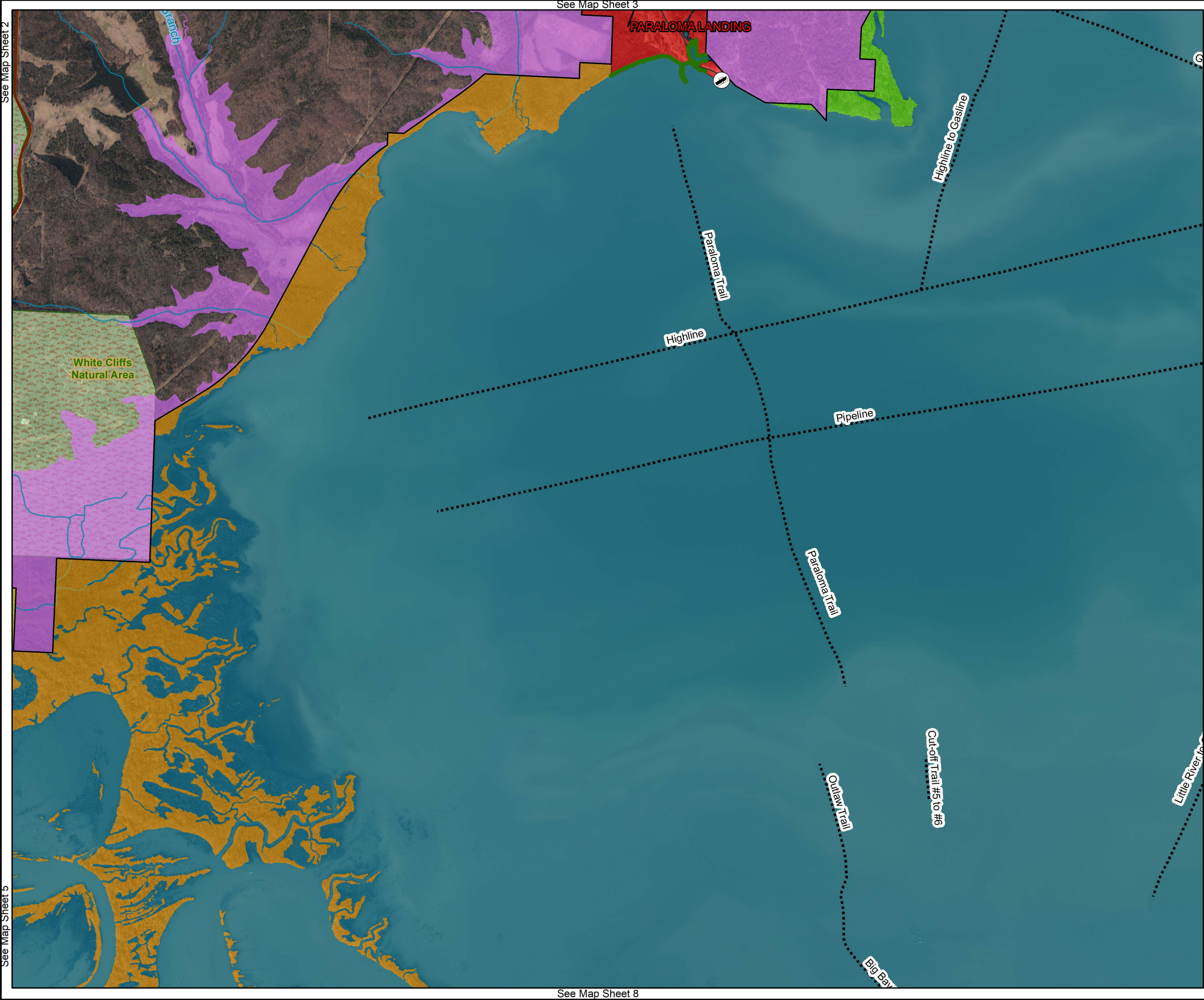


SHORELINE MANAGEMENT PLAN MILLWOOD LAKE

Imagery Date: 2017



US ARMY CORPS OF ENGINEERS
Little Rock District
Millwood Lake



ALTERNATIVE ONE NO ACTION (2012 PLAN)

SHORELINE ALLOCATIONS

LIMITED DEVELOPMENT AREA

PUBLIC RECREATION AREA

PROHIBITED

PROTECTED (No Color Shown On Map)

Legend

Corps Operated Ramp

Boat Lane

Roads

State Highway

Rivers/Streams

Natural Area

Flowage Easement

USACE Boundary

Preferred Land Classification

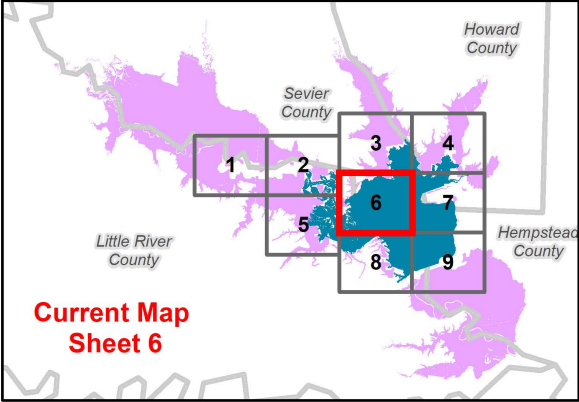
HIGH DENSITY

LOW DENSITY

WILDLIFE MANAGEMENT

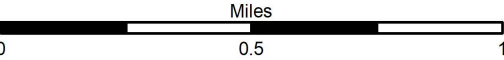
ENVIRONMENTALLY SENSITIVE

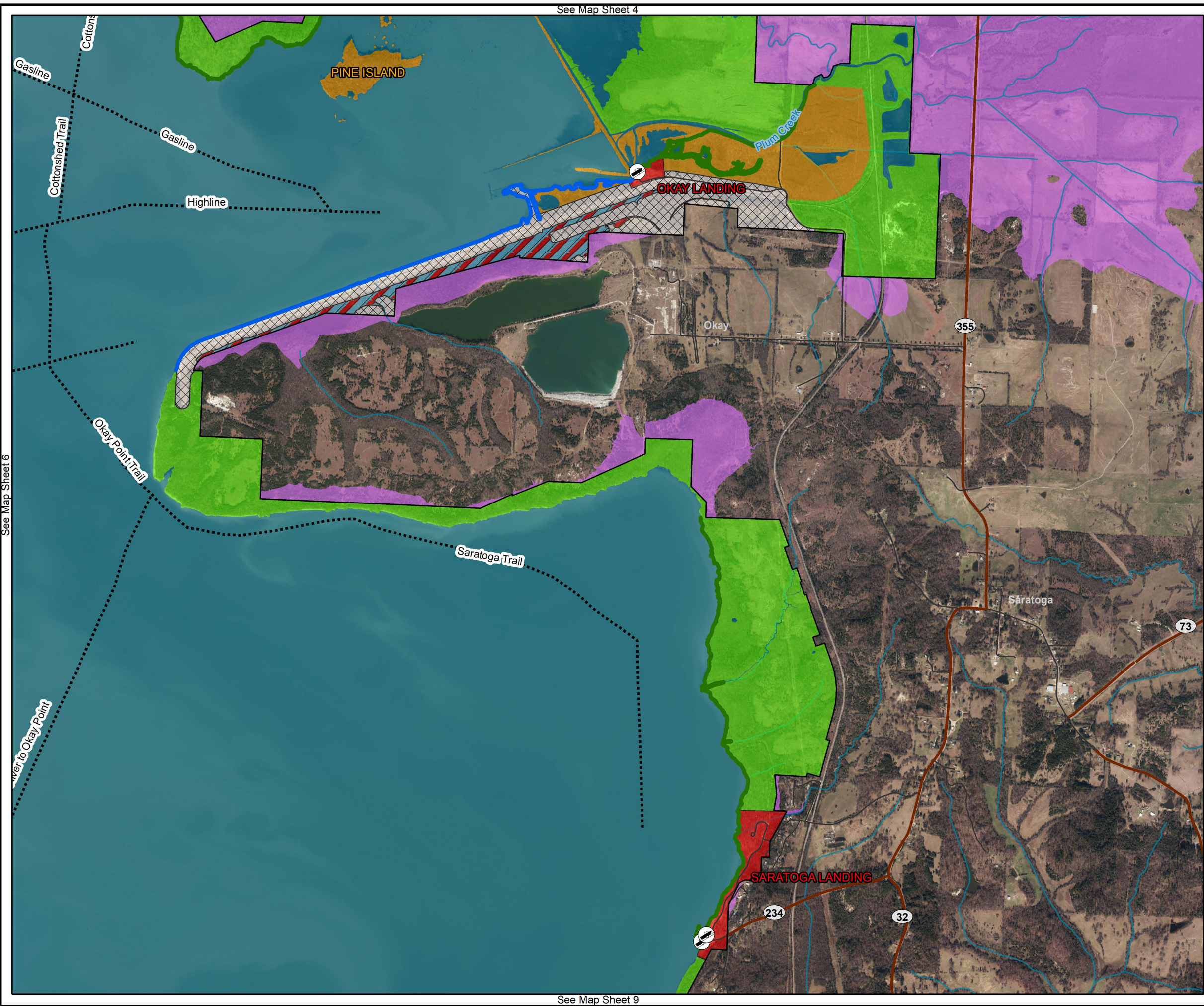
OPEN RECREATION



SHORELINE MANAGEMENT PLAN MILLWOOD LAKE

Imagery Date: 2017





ALTERNATIVE ONE NO ACTION (2012 PLAN)

SHORELINE ALLOCATIONS

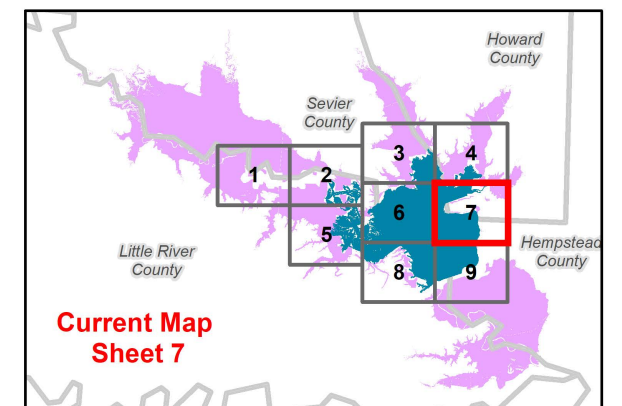
- LIMITED DEVELOPMENT AREA
- PUBLIC RECREATION AREA
- PROHIBITED
- PROTECTED (No Color Shown On Map)

Legend

- Corps Operated Ramp
- Boat Lane
- Roads
- State Highway
- Rivers/Streams
- Flowage Easement
- USACE Boundary

Preferred Land Classification

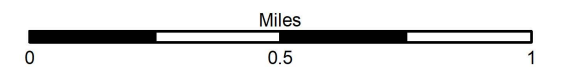
- HIGH DENSITY
- WILDLIFE MANAGEMENT
- ENVIRONMENTALLY SENSITIVE
- PROJECT OPERATIONS
- RESTRICTED
- OPEN RECREATION



Current Map
Sheet 7

SHORELINE MANAGEMENT PLAN MILLWOOD LAKE

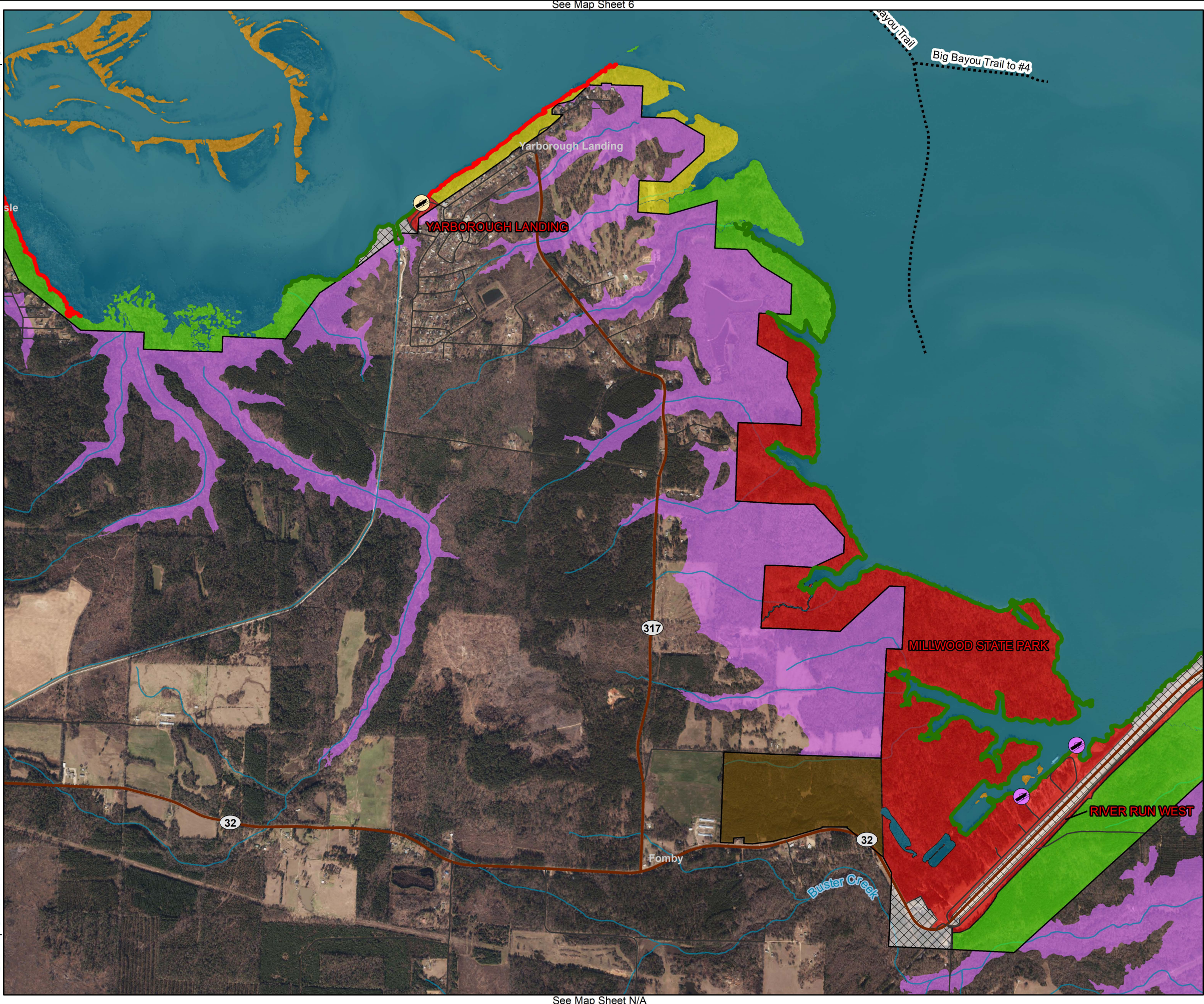
Imagery Date: 2017



US ARMY CORPS
OF ENGINEERS
Little Rock District
Millwood Lake



See Map Sheet 5
See Map Sheet N/A



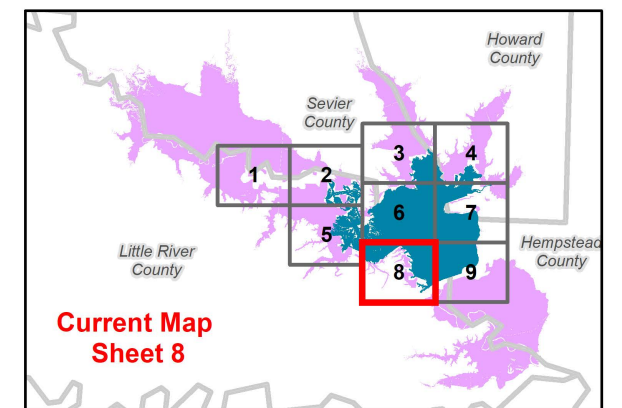
ALTERNATIVE ONE NO ACTION (2012 PLAN)

SHORELINE ALLOCATIONS

- LIMITED DEVELOPMENT AREA
- PUBLIC RECREATION AREA
- PROHIBITED
- PROTECTED (No Color Shown On Map)

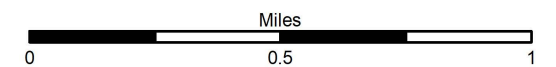
Legend

- County Operated Ramp
- State Operated Ramp
- Boat Lane
- Roads
- State Highway
- Rivers/Streams
- Flowage Easement
- USACE Boundary
- Preferred Land Classification**
 - HIGH DENSITY
 - LOW DENSITY
 - WILDLIFE MANAGEMENT
 - VEGETATIVE MANAGEMENT
 - ENVIRONMENTALLY SENSITIVE
 - PROJECT OPERATIONS
 - RESTRICTED
 - OPEN RECREATION



SHORELINE MANAGEMENT PLAN MILLWOOD LAKE

Imagery Date: 2017



See Map Sheet 7

See Map Sheet 8

See Map Sheet N/A

See Map Sheet N/A

ALTERNATIVE ONE NO ACTION (2012 PLAN)

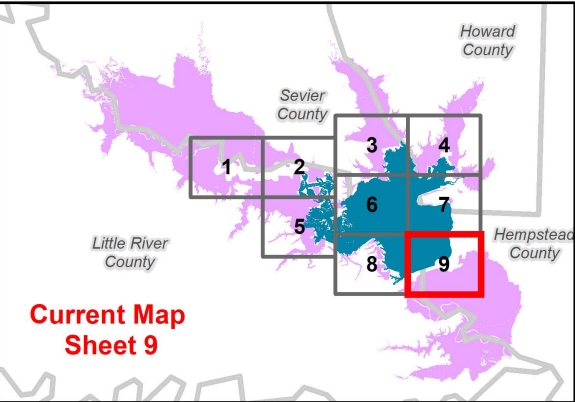
- SHORELINE ALLOCATIONS**
- LIMITED DEVELOPMENT AREA
 - PUBLIC RECREATION AREA
 - PROHIBITED
 - PROTECTED (No Color Shown On Map)

Legend

- Corps Operated Ramp
- Roads
- State Highway
- Rivers/Streams
- Flowage Easement
- USACE Boundary

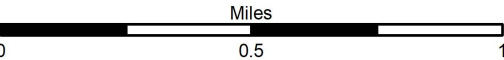
Preferred Land Classification

- HIGH DENSITY
- LOW DENSITY
- WILDLIFE MANAGEMENT
- ENVIRONMENTALLY SENSITIVE
- PROJECT OPERATIONS
- RESTRICTED
- OPEN RECREATION



SHORELINE MANAGEMENT PLAN MILLWOOD LAKE

Imagery Date: 2017



MAP SHEET INDEX ALTERNATIVE TWO (PREFERRED)

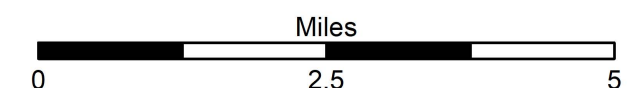
MAP SHEET INDEX

Legend

- Roads
 - State Highway
 - US Highway
 - Counties
- LAND CLASSIFICATIONS**
- HIGH DENSITY
 - LOW DENSITY
 - WILDLIFE MANAGEMENT
 - VEGETATIVE MANAGEMENT
 - ENVIRONMENTALLY SENSITIVE
 - MITIGATION
 - PROJECT OPERATIONS
 - RESTRICTED
 - OPEN RECREATION
- SHORELINE ALLOCATIONS**
- LIMITED DEVELOPMENT AREA
 - PUBLIC RECREATION AREA
 - PROHIBITED
 - PROTECTED (No Color Shown On Map)

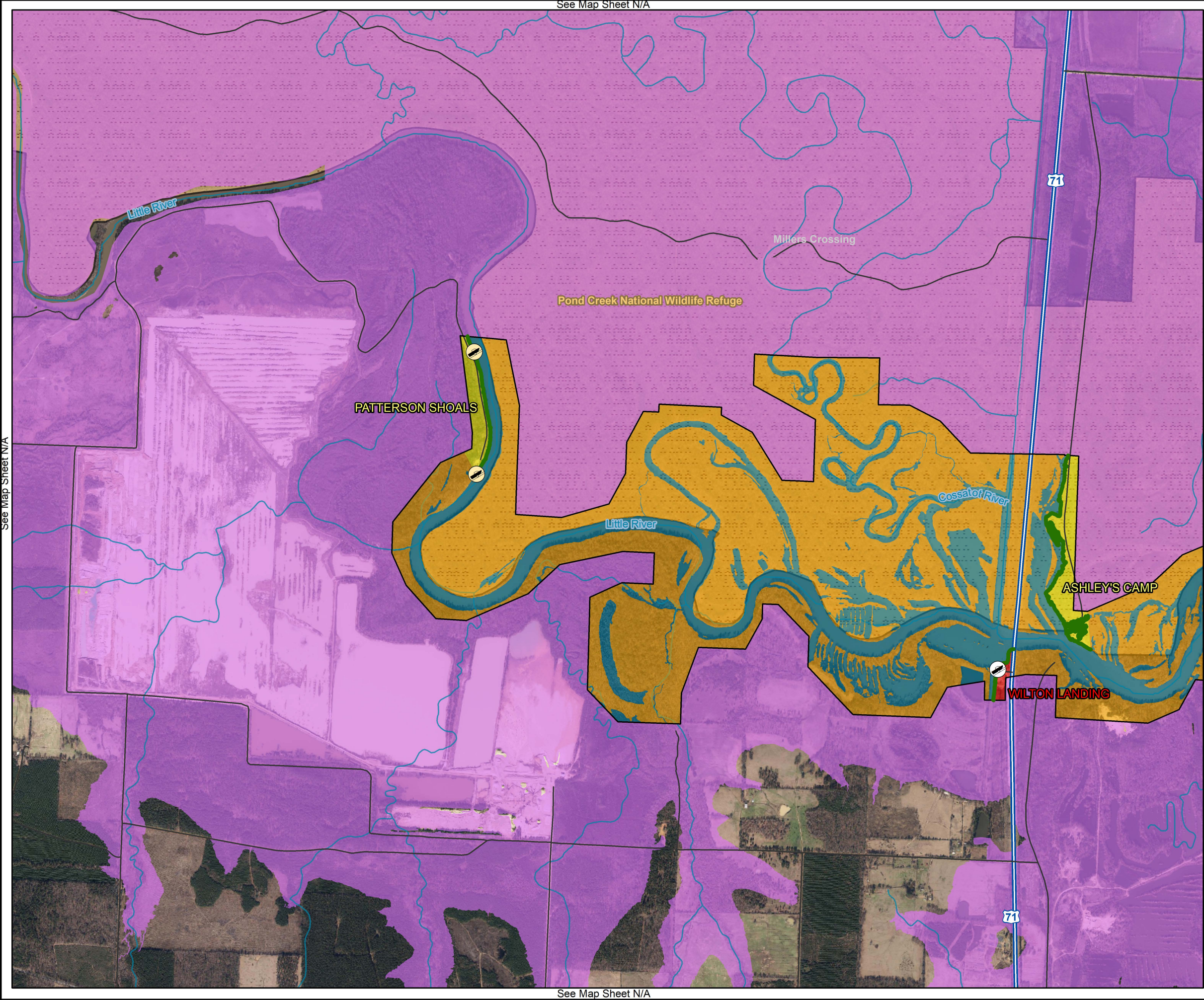


SHORELINE MANAGEMENT PLAN MILLWOOD LAKE



US ARMY CORPS
OF ENGINEERS
Little Rock District
Millwood Lake





ALTERNATIVE TWO PREFERRED

SHORELINE ALLOCATIONS

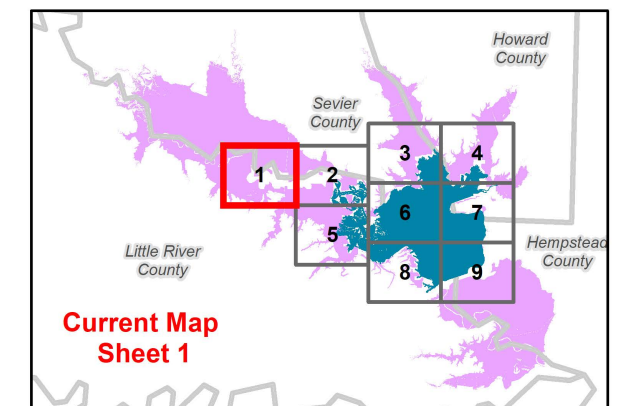
- LIMITED DEVELOPMENT AREA
- PUBLIC RECREATION AREA
- PROHIBITED
- PROTECTED (No Color Shown On Map)

Legend

- Corps Operated Ramp
- County Operated Ramp
- Roads
- US Highway
- Rivers/Streams
- National Wildlife Refuge
- Flowage Easement
- USACE Boundary

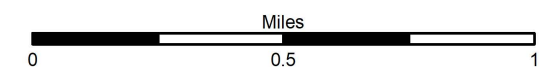
Preferred Land Classification

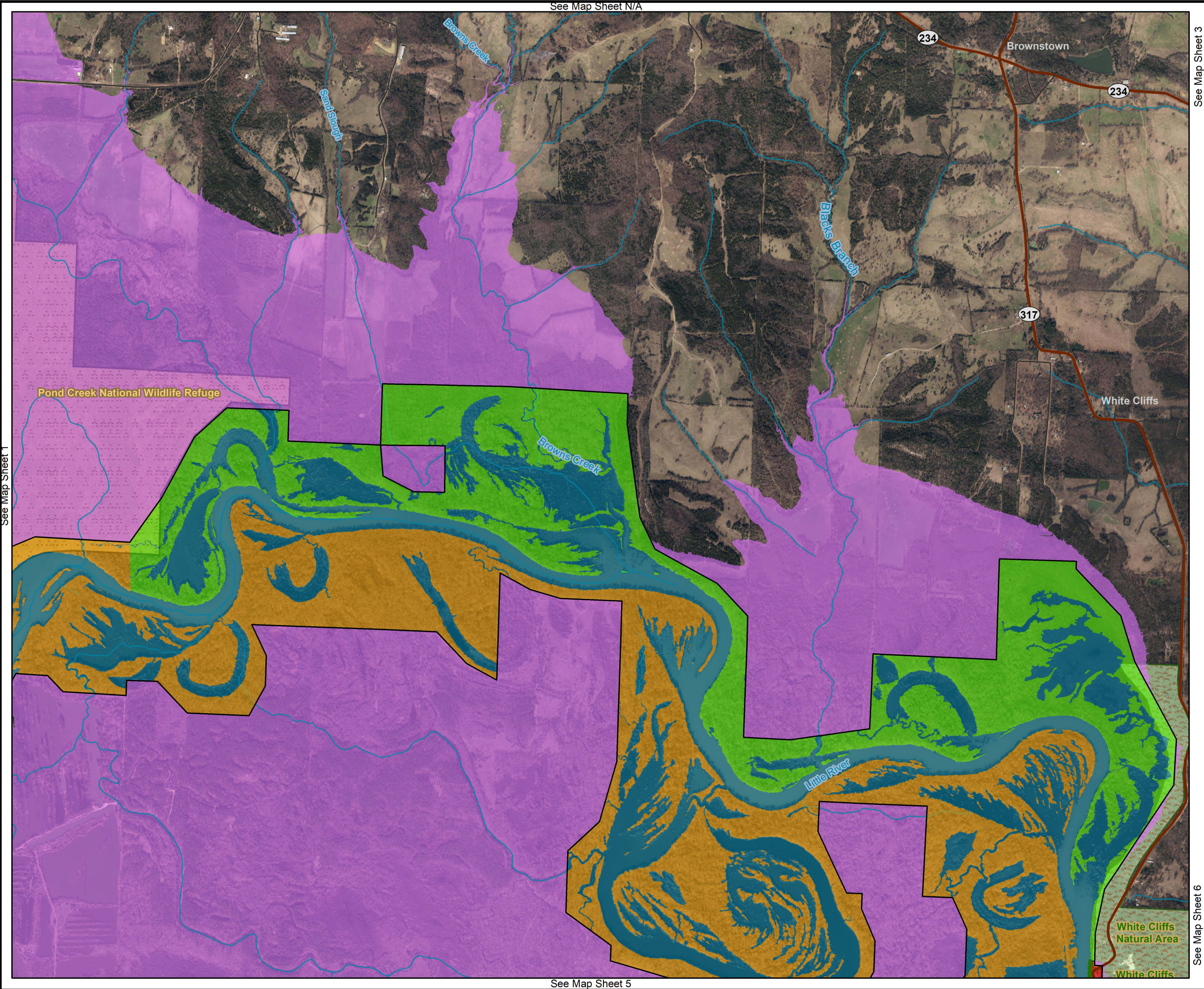
- HIGH DENSITY
- LOW DENSITY
- WILDLIFE MANAGEMENT
- OPEN RECREATION



SHORELINE MANAGEMENT PLAN MILLWOOD LAKE

Imagery Date: 2017





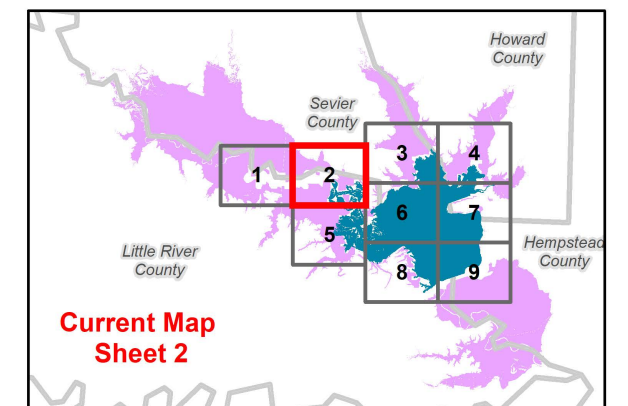
ALTERNATIVE TWO PREFERRED

SHORELINE ALLOCATIONS

- LIMITED DEVELOPMENT AREA
- PUBLIC RECREATION AREA
- PROHIBITED
- PROTECTED (No Color Shown On Map)

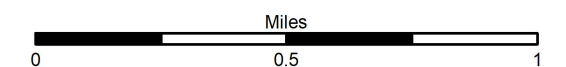
Legend

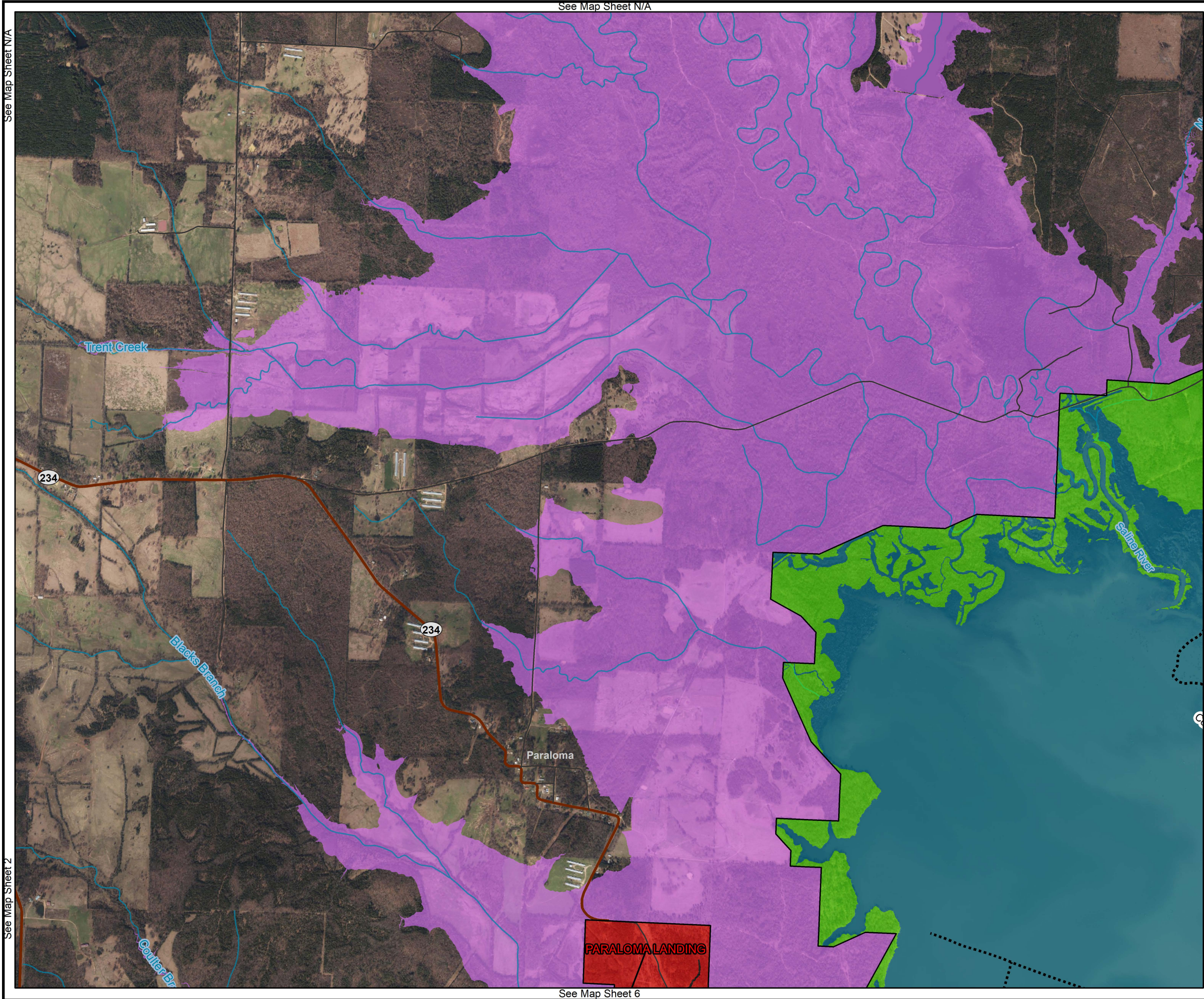
- Roads
 - State Highway
 - Rivers/Streams
 - National Wildlife Refuge
 - Natural Area
 - Flowage Easement
 - USACE Boundary
- ### Preferred Land Classification
- HIGH DENSITY
 - WILDLIFE MANAGEMENT
 - ENVIRONMENTALLY SENSITIVE
 - OPEN RECREATION



SHORELINE MANAGEMENT PLAN MILLWOOD LAKE

Imagery Date: 2017





ALTERNATIVE TWO PREFERRED

SHORELINE ALLOCATIONS

LIMITED DEVELOPMENT AREA

PUBLIC RECREATION AREA

PROHIBITED

PROTECTED (No Color Shown On Map)

Legend

.....

 Boat Lane

—

 Roads

—

 State Highway

—

 Rivers/Streams

Flowage Easement

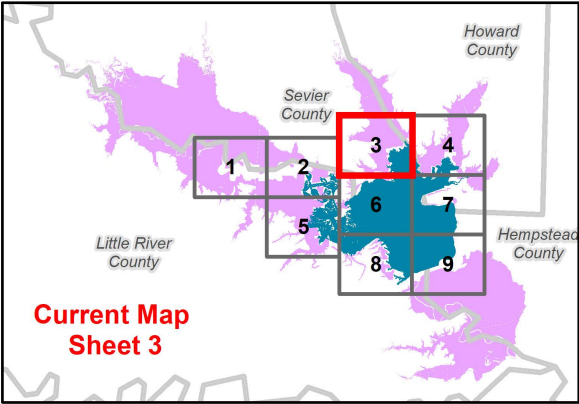
USACE Boundary

Preferred Land Classification

HIGH DENSITY

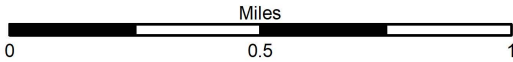
ENVIRONMENTALLY SENSITIVE

OPEN RECREATION



SHORELINE MANAGEMENT PLAN MILLWOOD LAKE

Imagery Date: 2017



ALTERNATIVE TWO PREFERRED

SHORELINE ALLOCATIONS

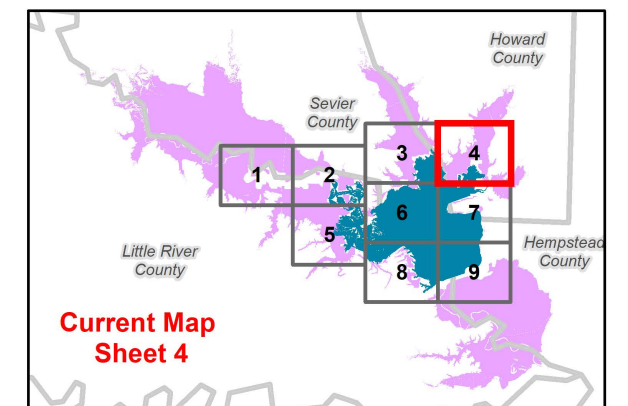
- LIMITED DEVELOPMENT AREA
- PUBLIC RECREATION AREA
- PROHIBITED
- PROTECTED (No Color Shown On Map)

Legend

- Corps Operated Ramp
- Boat Lane
- Roads
- State Highway
- Rivers/Streams
- Flowage Easement
- USACE Boundary

Preferred Land Classification

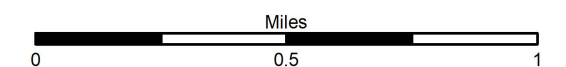
- HIGH DENSITY
- WILDLIFE MANAGEMENT
- ENVIRONMENTALLY SENSITIVE
- MITIGATION
- OPEN RECREATION

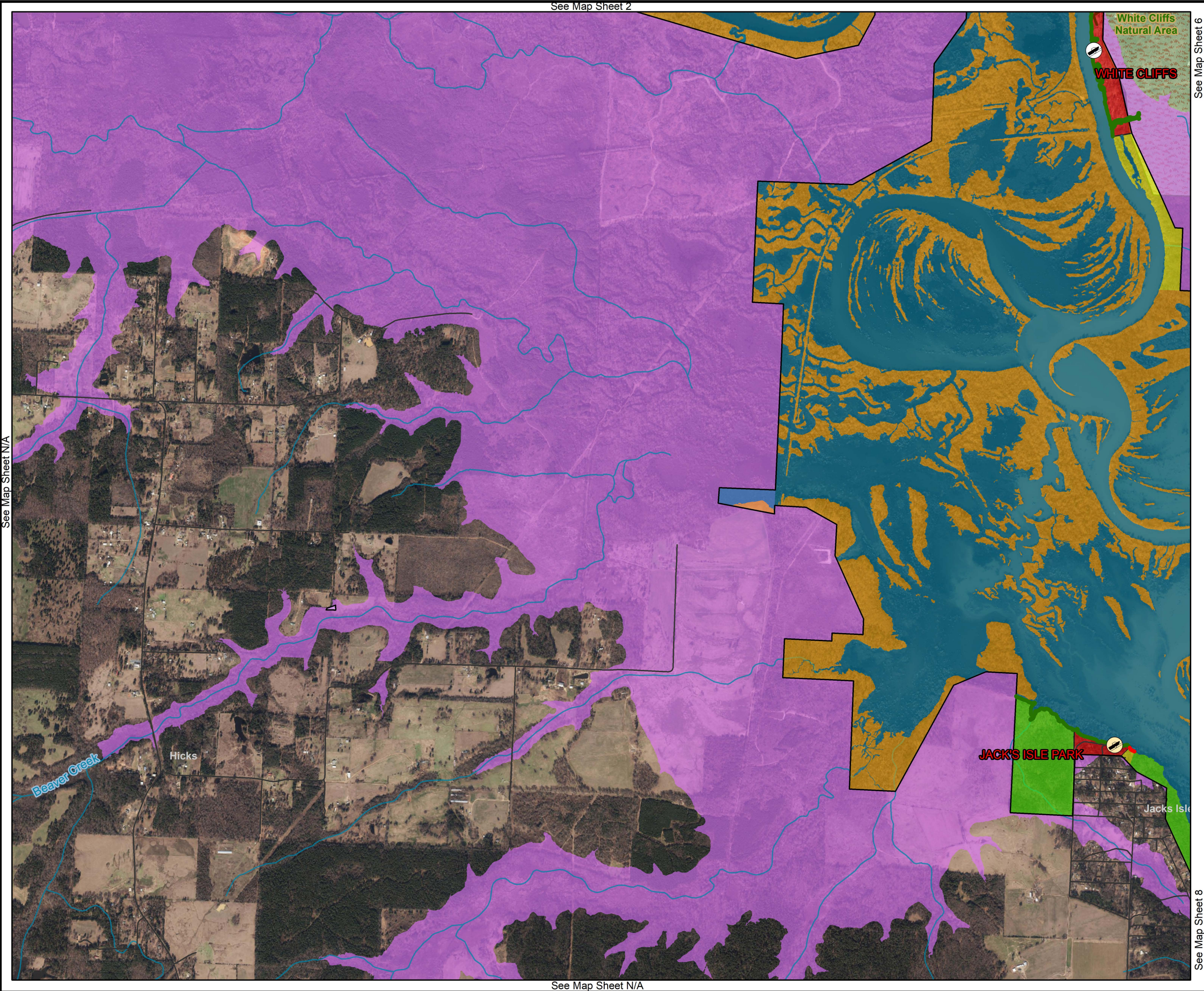


Current Map
Sheet 4

SHORELINE MANAGEMENT PLAN MILLWOOD LAKE

Imagery Date: 2017





ALTERNATIVE TWO PREFERRED

SHORELINE ALLOCATIONS

LIMITED DEVELOPMENT AREA

PUBLIC RECREATION AREA

PROHIBITED

PROTECTED (No Color Shown On Map)

Legend

Corps Operated Ramp

County Operated Ramp

Roads

State Highway

Rivers/Streams

Natural Area

Flowage Easement

USACE Boundary

Preferred Land Classification

HIGH DENSITY

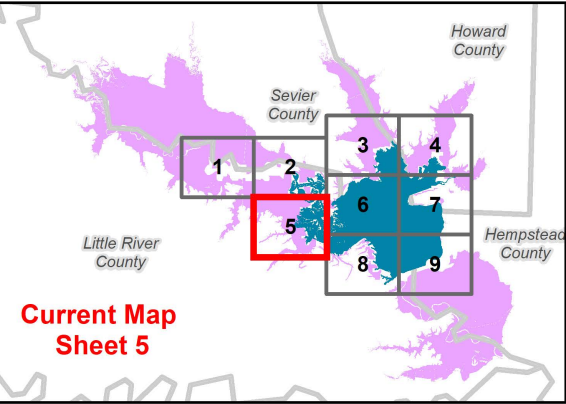
LOW DENSITY

WILDLIFE MANAGEMENT

ENVIRONMENTALLY SENSITIVE

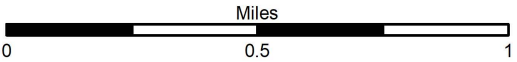
MITIGATION

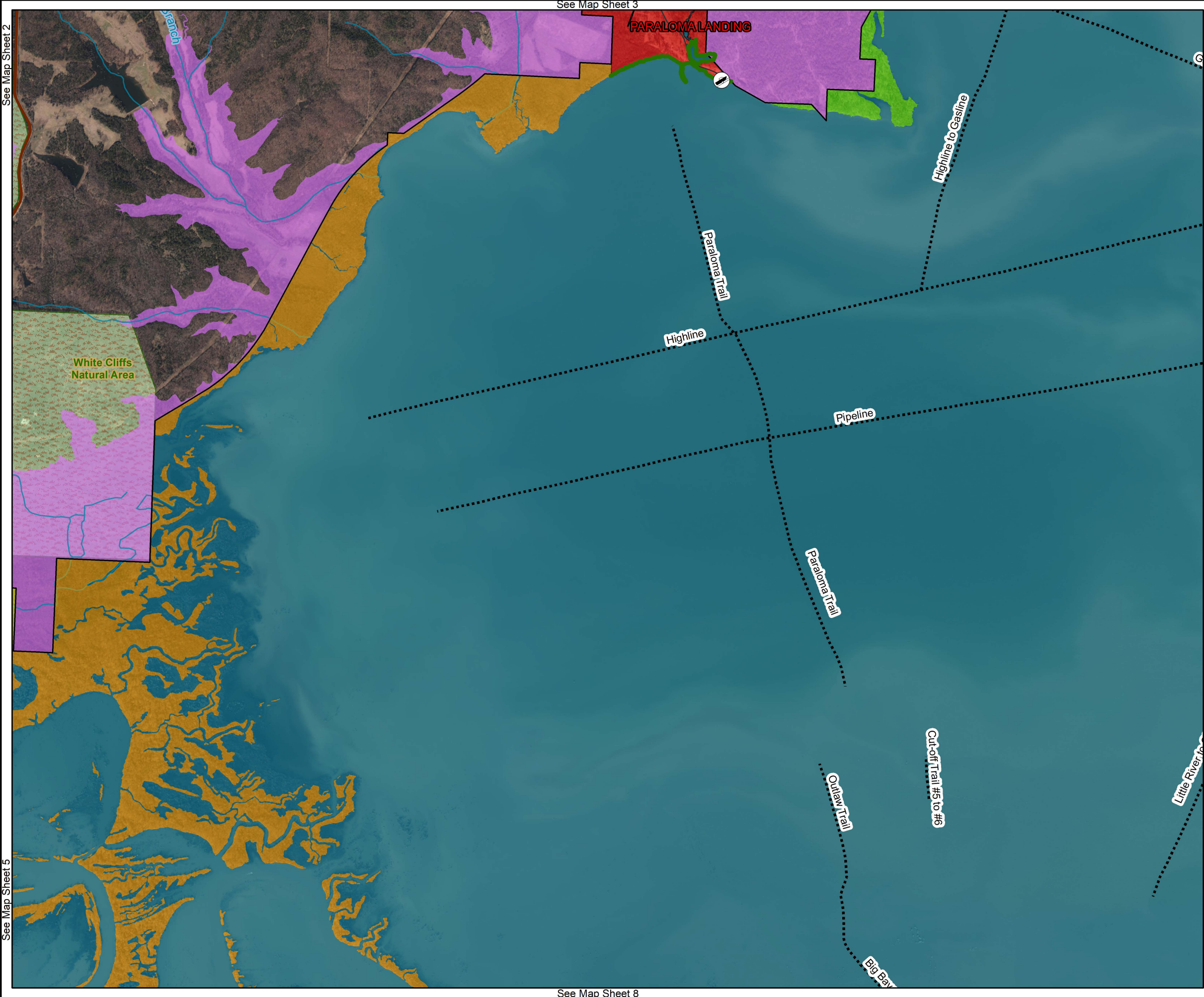
OPEN RECREATION



SHORELINE MANAGEMENT PLAN MILLWOOD LAKE

Imagery Date: 2017





ALTERNATIVE TWO PREFERRED

SHORELINE ALLOCATIONS

LIMITED DEVELOPMENT AREA

PUBLIC RECREATION AREA

PROHIBITED

PROTECTED (No Color Shown On Map)

Legend

Corps Operated Ramp

Boat Lane

Roads

State Highway

Rivers/Streams

Natural Area

Flowage Easement

USACE Boundary

Preferred Land Classification

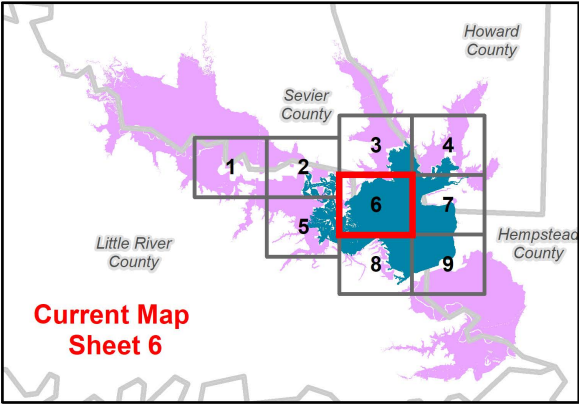
HIGH DENSITY

LOW DENSITY

WILDLIFE MANAGEMENT

ENVIRONMENTALLY SENSITIVE

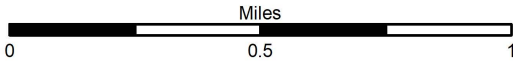
OPEN RECREATION

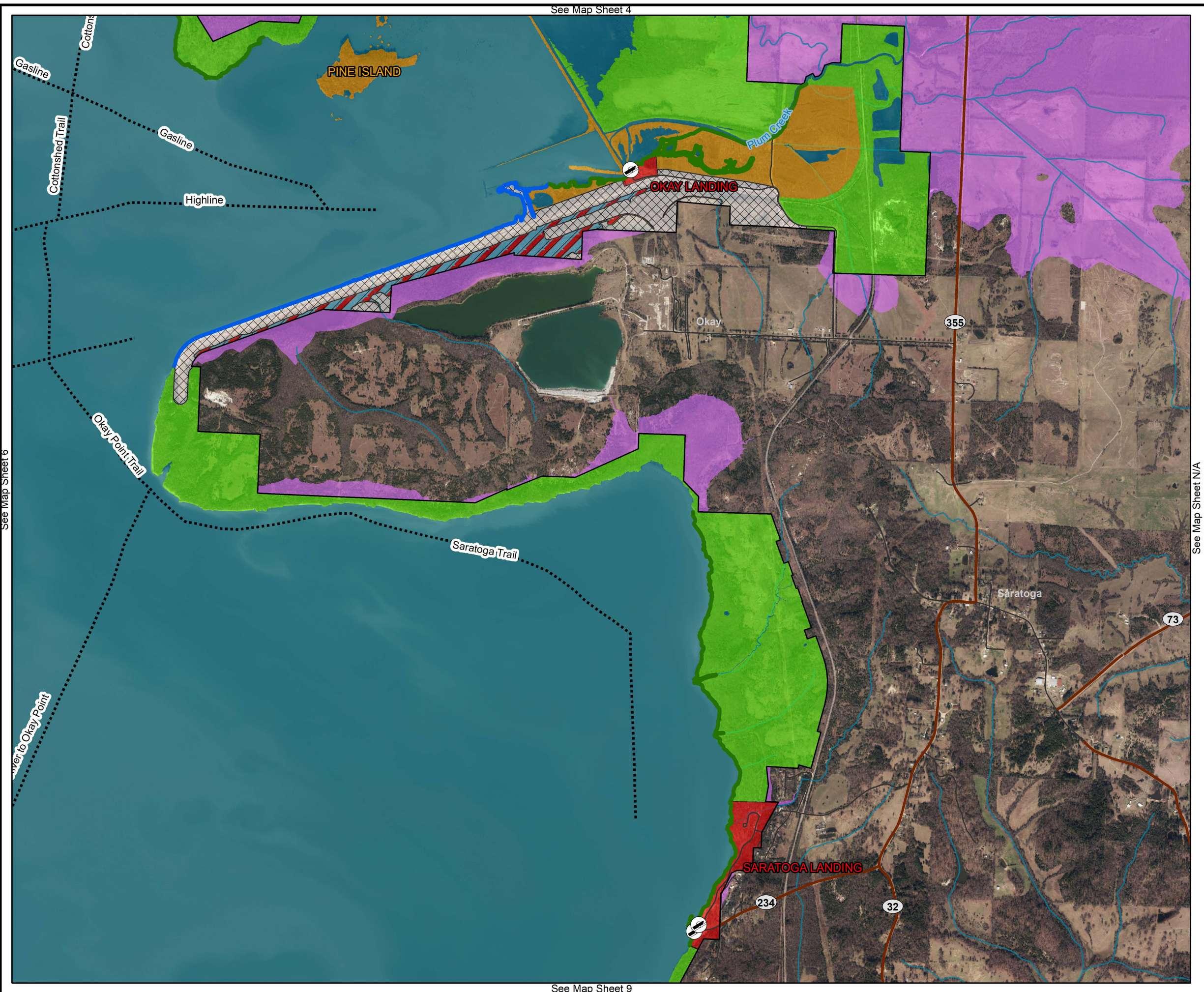


Current Map
Sheet 6

SHORELINE MANAGEMENT PLAN MILLWOOD LAKE

Imagery Date: 2017





ALTERNATIVE TWO
PREFERRED

SHORELINE ALLOCATIONS

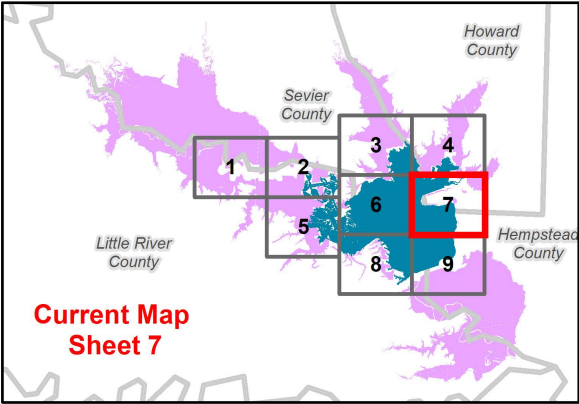
- LIMITED DEVELOPMENT AREA
- PUBLIC RECREATION AREA
- PROHIBITED
- PROTECTED (No Color Shown On Map)

Legend

- Corps Operated Ramp
- Boat Lane
- Roads
- State Highway
- Rivers/Streams
- Flowage Easement
- USACE Boundary

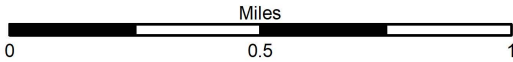
Preferred Land Classification

- HIGH DENSITY
- WILDLIFE MANAGEMENT
- ENVIRONMENTALLY SENSITIVE
- PROJECT OPERATIONS
- RESTRICTED
- OPEN RECREATION



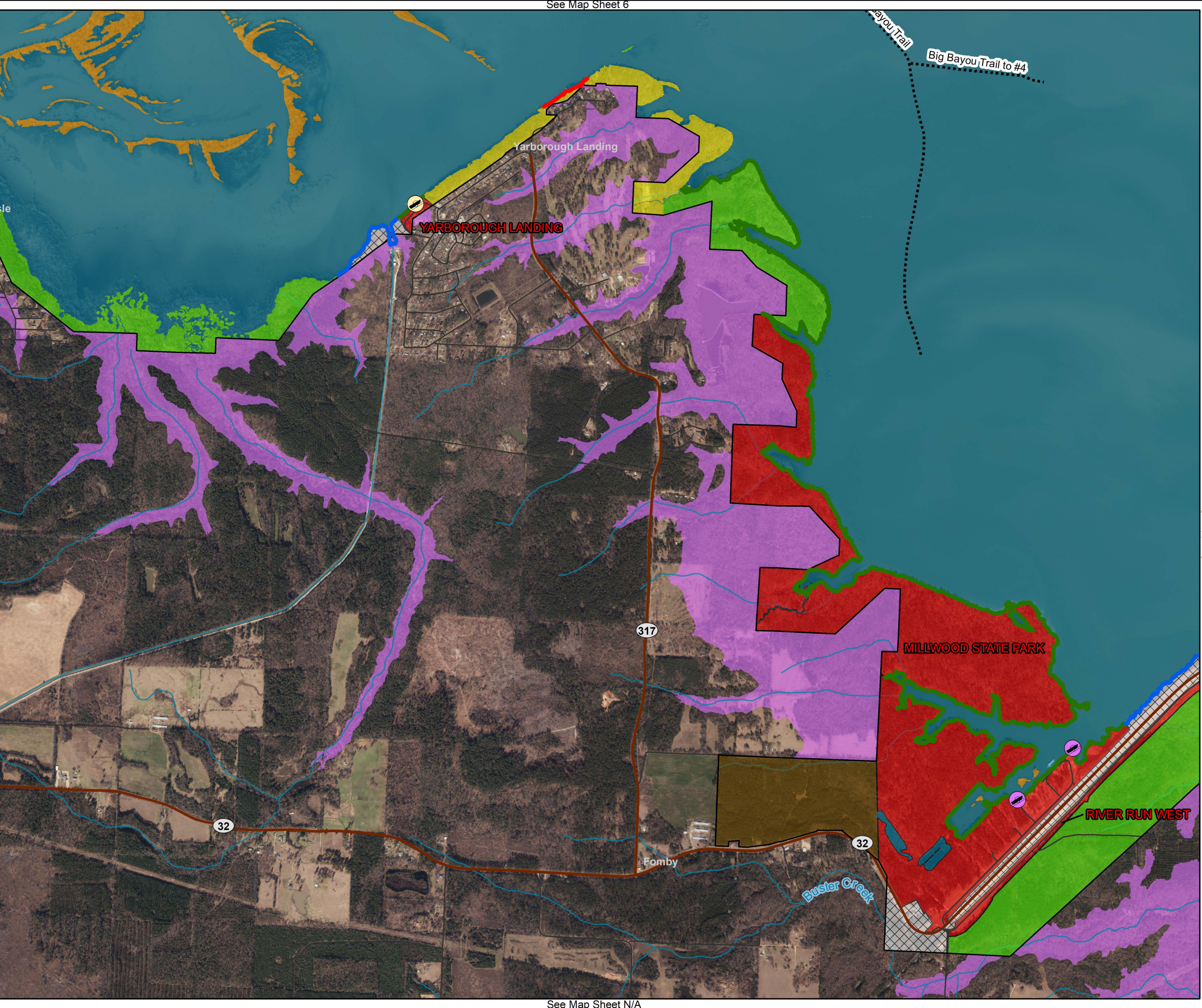
SHORELINE MANAGEMENT PLAN
MILLWOOD LAKE

Imagery Date: 2017



See Map Sheet 5

See Map Sheet N/A



ALTERNATIVE TWO PREFERRED

SHORELINE ALLOCATIONS

LIMITED DEVELOPMENT AREA

PUBLIC RECREATION AREA

PROHIBITED

PROTECTED (No Color Shown On Map)

Legend

County Operated Ramp

State Operated Ramp

Boat Lane

Roads

State Highway

Rivers/Streams

Flowage Easement

USACE Boundary

Preferred Land Classification

HIGH DENSITY

LOW DENSITY

WILDLIFE MANAGEMENT

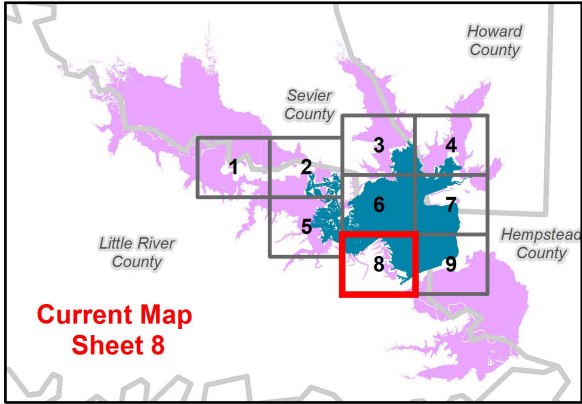
VEGETATIVE MANAGEMENT

ENVIRONMENTALLY SENSITIVE

PROJECT OPERATIONS

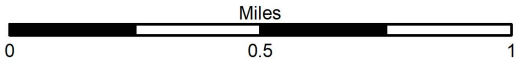
RESTRICTED

OPEN RECREATION



SHORELINE MANAGEMENT PLAN MILLWOOD LAKE

Imagery Date: 2017



See Map Sheet N/A

ALTERNATIVE TWO PREFERRED

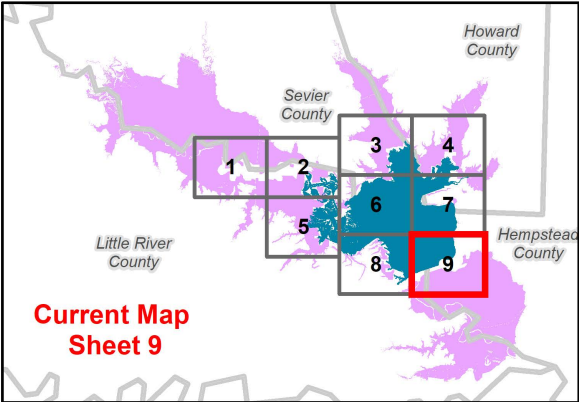
- SHORELINE ALLOCATIONS**
- LIMITED DEVELOPMENT AREA
 - PUBLIC RECREATION AREA
 - PROHIBITED
 - PROTECTED (No Color Shown On Map)

Legend

- Corps Operated Ramp
- Roads
- State Highway
- Rivers/Streams
- Flowage Easement
- USACE Boundary

Preferred Land Classification

- HIGH DENSITY
- LOW DENSITY
- WILDLIFE MANAGEMENT
- ENVIRONMENTALLY SENSITIVE
- PROJECT OPERATIONS
- RESTRICTED
- OPEN RECREATION



SHORELINE MANAGEMENT PLAN MILLWOOD LAKE

Imagery Date: 2017

