

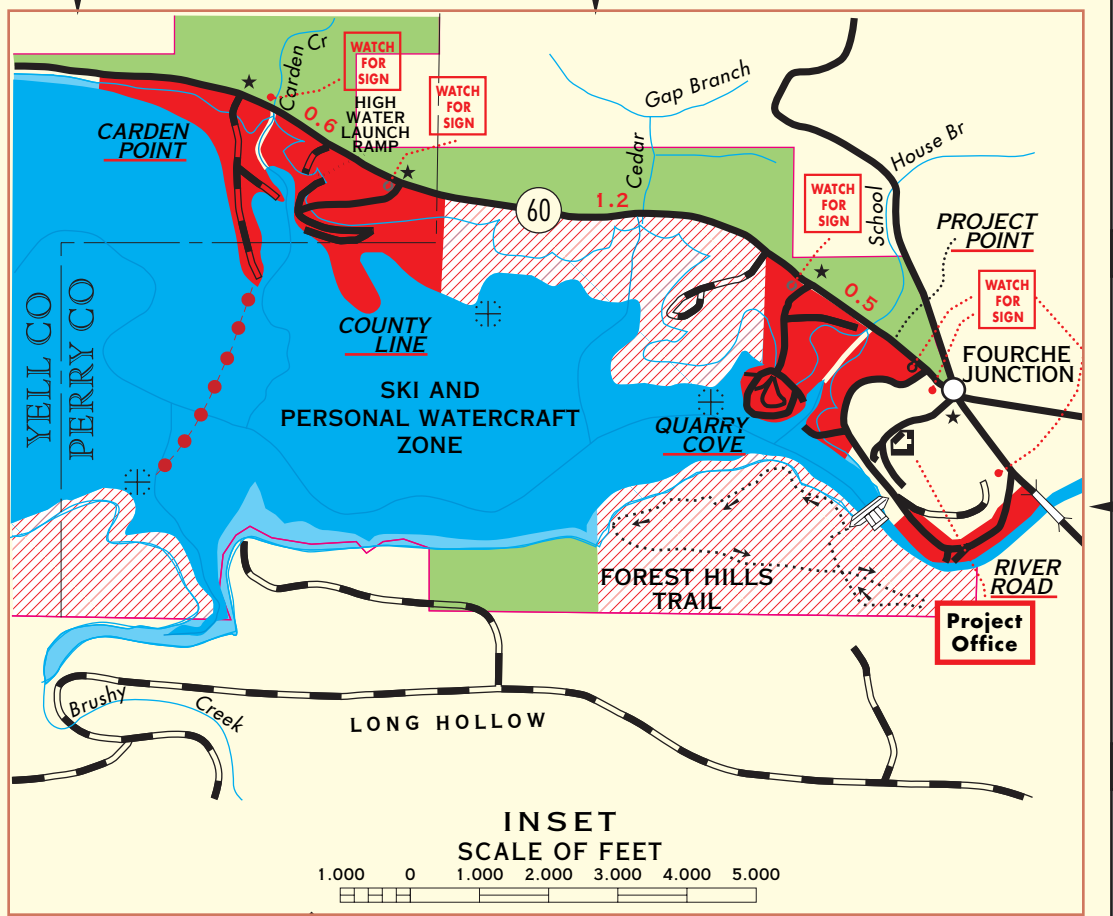
Road Mileages to Dam

FROM	MILES
Little Rock	66
Hot Springs	45
Fort Smith	92
Dardanelle	24
Waldron	66
Morrilton	34
Conway	46
Ozark	78
Russellville	28
Benton	65

FACILITIES

★ Available on Project Lands
☆ Available Nearby

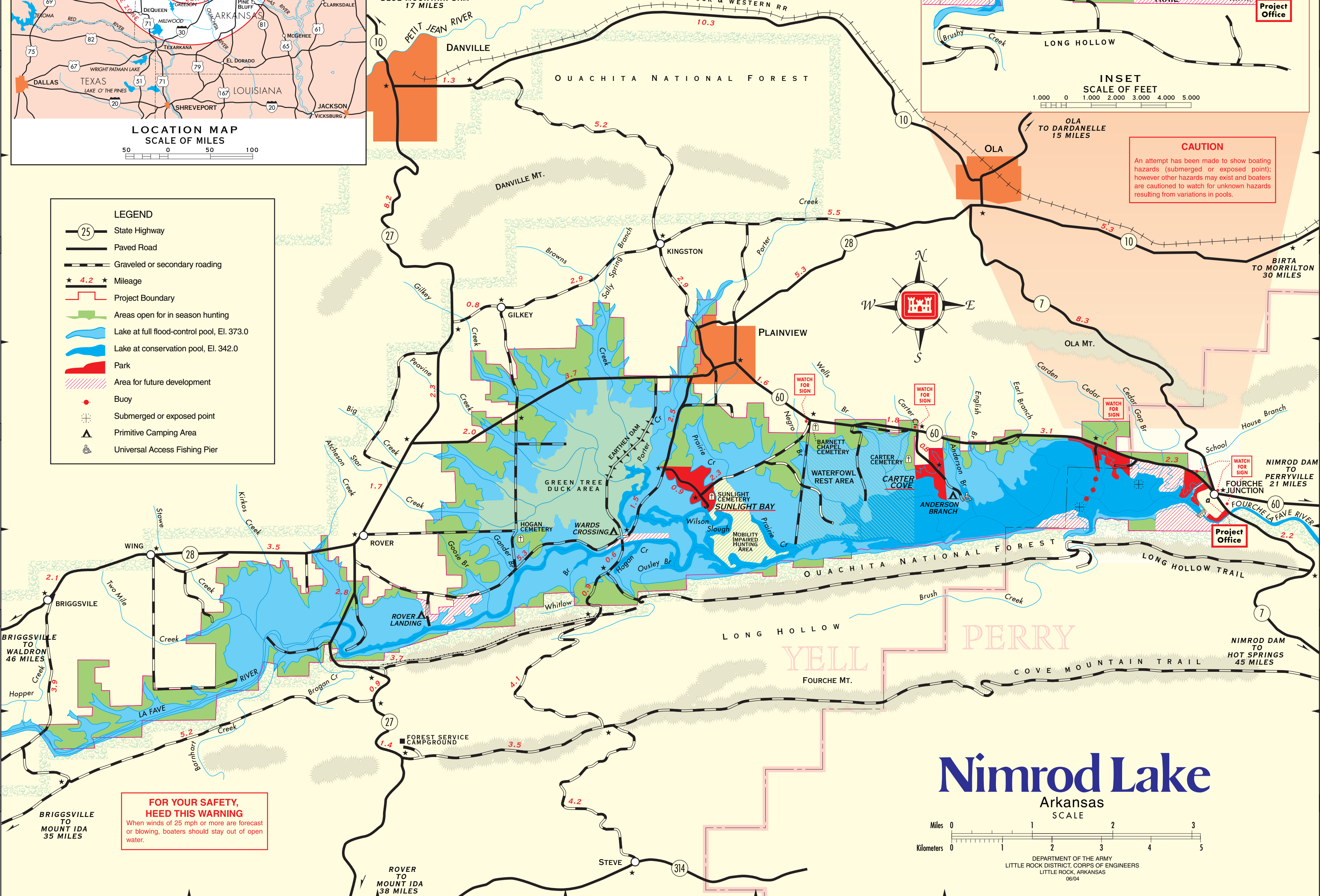
LOCATION	Map Location	Camping	Picnicking	Swimming	Electrical Hookups	Water Hookups	Restroom - Shower	Trailer Dump Station	Playground	Group Picnic Shelter	Fish Cleaning Station	Amphitheater	Mature Trail	Flush Restroom	Municipal Drinking Water	Compass Reservation	Primitive Camping	Fuel, Boat & Supplies	Universal Boat Access	
Carden Point Park	6D	★	★	★	★	★	★	★	★	★	★	★	★	★	★	★	★	★	★	
Carter Cove Park	5D	★	★	★	★	★	★	★	★	★	★	★	★	★	★	★	★	★	★	
County Line Park	6D	★	★	★	★	★	★	★	★	★	★	★	★	★	★	★	★	★	★	
Project Point Loop	7D	NOW A LOOP OF RIVER ROAD PARK																		
Quarry Cove Park	7D	★	★	★	★	★	★	★	★	★	★	★	★	★	★	★	★	★	★	
River Road Park	7D	★	★	★	★	★	★	★	★	★	★	★	★	★	★	★	★	★	★	
Rover Landing	3E																		☆	
Sunlight Bay Park	4D	★	★	★	★	★	★	★	★	★	★	★	★	★	★	★	★	★	★	
Wards Crossing	4D																		☆	



CAUTION

An attempt has been made to show boating hazards (submerged or exposed point); however other hazards may exist and boaters are cautioned to watch for unknown hazards resulting from variations in pools.

- LEGEND**
- State Highway
 - Paved Road
 - Graveled or secondary roading
 - Mileage
 - Project Boundary
 - Areas open for in season hunting
 - Lake at full flood-control pool, El. 373.0
 - Lake at conservation pool, El. 342.0
 - Park
 - Area for future development
 - Buoy
 - Submerged or exposed point
 - Primitive Camping Area
 - Universal Access Fishing Pier



FOR YOUR SAFETY, HEED THIS WARNING

When winds of 25 mph or more are forecast or blowing, boaters should stay out of open water.

