



**US Army Corps
of Engineers®**
Little Rock District

U.S. ARMY

Arkansas River Basin

McClellan-Kerr Arkansas River Navigation System

James W. Trimble L&D

13

Ozark-Jetta Taylor L&D

12

Dardanelle L&D

10

Arthur V. Ormond L&D

9

Toad Suck Ferry L&D

8

Murray L&D

7

David D. Terry L&D

6

Charles D. Maynard L&D

5

Emmett Sanders L&D

4

Joe Hardin L&D

3

White River Basin

Beaver Lake

2

Table Rock Lake

1

Bull Shoals Lake

99

Norfolk Lake

Petit Jean River

Blue Mountain Lake

Fourche La Fave River

Nimrod Lake

Black River

Clearwater Lake

Little River Basin

Dierks Lake

DeQueen Lake

Gilham Lake

Millwood Lake

Facility Purpose

- Flood Risk Reduction
- Federal Hydropower
- Non-Federal Hydropower
- Navigation
- Environmental Stewardship
- Water Supply
- Recreation

White River Basin

Beaver Lake

2

Table Rock Lake

1

Bull Shoals Lake

99

Norfolk Lake

Petit Jean River

Blue Mountain Lake

Fourche La Fave River

Nimrod Lake

Black River

Clearwater Lake

Little River Basin

Dierks Lake

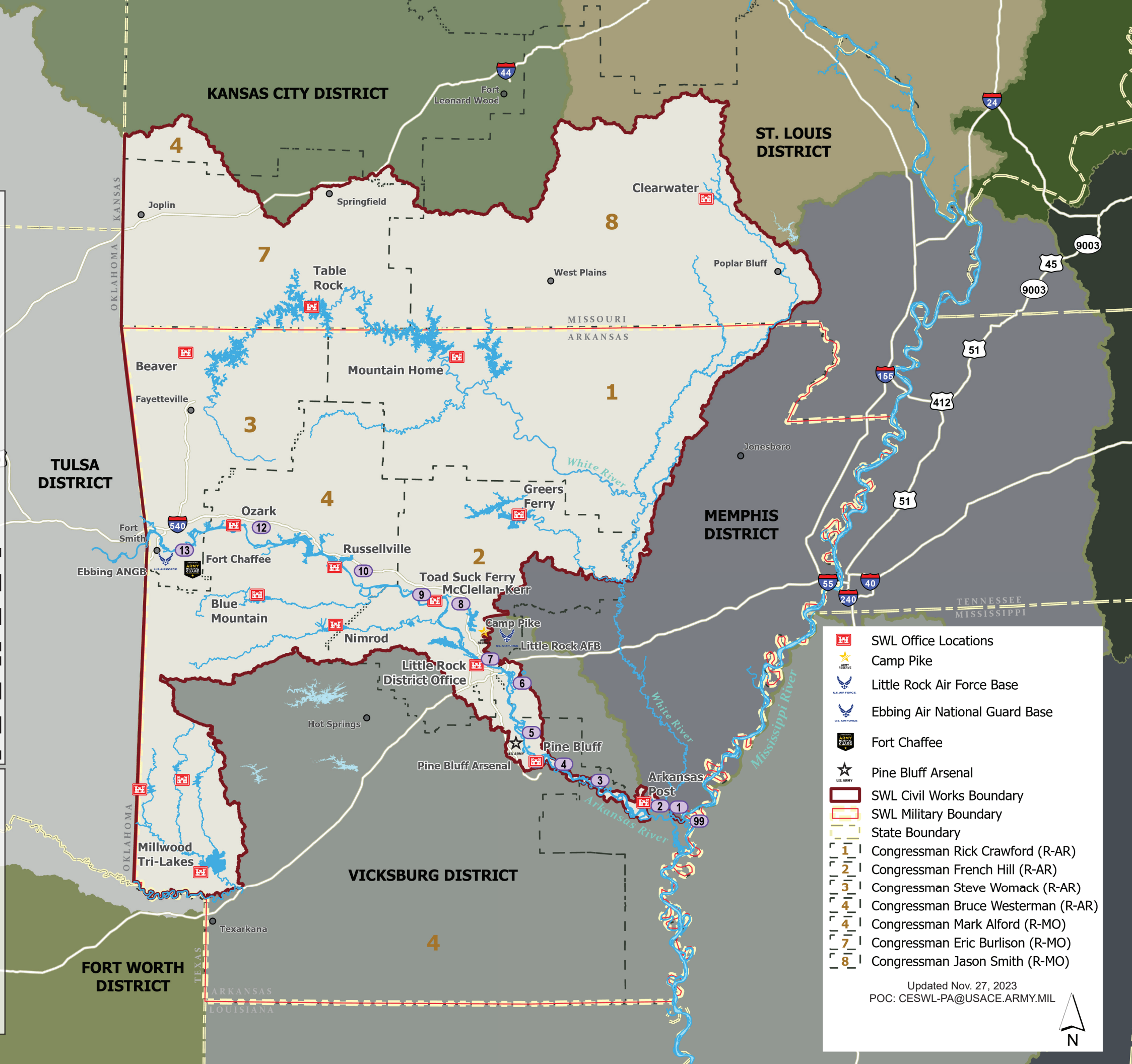
DeQueen Lake

Gilham Lake

Millwood Lake

Facility Purpose

- Flood Risk Reduction
- Federal Hydropower
- Non-Federal Hydropower
- Navigation
- Environmental Stewardship
- Water Supply
- Recreation



- SWL Office Locations**
- Camp Pike
 - Little Rock Air Force Base
 - Ebbing Air National Guard Base
 - Fort Chaffee
 - Pine Bluff Arsenal
- SWL Civil Works Boundary**
- SWL Military Boundary**
- State Boundary**
- Congressmen**
- 1 Congressman Rick Crawford (R-AR)
 - 2 Congressman French Hill (R-AR)
 - 3 Congressman Steve Womack (R-AR)
 - 4 Congressman Bruce Westerman (R-AR)
 - 4 Congressman Mark Alford (R-MO)
 - 7 Congressman Eric Burlison (R-MO)
 - 8 Congressman Jason Smith (R-MO)

Updated Nov. 27, 2023
POC: CESWL-PA@USACE.ARMY.MIL





U.S. ARMY

Little Rock District













EST. 1881

Provide vital public engineering services in peace and war to strengthen our Nation’s security, energize the economy, and reduce risks from disasters.



US Army Corps
of Engineers®
Little Rock District

Business Lines

| | | | | | | |
|--|--|---|---|--|--|---|
| <div>Flood Risk Management</div> <div></div> | Managing water for flood risk, hydropower, navigation, wildlife and recreation. Levee technical assistance and flood fighting operations provided. | | | | | |
| | 12 flood control reservoirs | 95 sponsor maintained levee systems | 3 USACE maintained levees | \$875M total avoided flood damages in Arkansas prevented by SWL projects in FY22 | \$7.2B cumulative damages prevented through FY22 | |
| <div>Navigation</div> <div></div> | Improving and maintaining navigation for economic development and safety by insuring a 9-foot channel depth. | | | | | |
| | 11.58M tons per year 10-year average | 13 locks and dams | \$24B annual export/import traffic | 308 miles of navigation channel | 2 survey vessels | 4 floating plants |
| | The navigation system in Arkansas generates an estimated \$4.5B sales impact for the nation | | | | | |
| <div>Hydropower</div> <div></div> | Providing clean, renewable energy. | | | | | |
| | 7 hydroelectric power plants | 344K household production each year | 1060.3MW hydropower generation capacity | \$266.9M annual benefits to the Nation | Support 4 non-federal hydropower projects on the Arkansas river | |
| <div>Water supply</div> <div></div> | Supplying local and state institutions with high quality drinking water for homes and businesses. | | | | | |
| | 30 water supply agreements | 479,000 acre-feet of water supply storage | | | (FY23) \$2.7M in revenue returned to the U.S. Treasury | |
| <div>Environmental Stewardship</div> <div></div> | Managing public resources in a responsible and sustainable manner. | | | | | |
| | 7 lakes with shoreline management plans | 26 federally recognized tribal partners | 29 known threatened and endangered species | 313 restoration areas | Invasive species management | |
| <div>Regulatory</div> <div></div> | Committed to protecting the nation's aquatic resources and navigation capacity, while allowing reasonable development through fair and balanced decisions. SWL serves as the lead regulatory district in Arkansas. | | | | | |
| | Section 404 Clean Water Act (1972) – permits for the discharge of dredged or fill material in waters of the U.S. | | Section 10 Rivers & Harbors act (1899) – permits for work in, over, or under navigable waters | | 27 approved mitigation banks and 1 in lieu fee | 2,600 finalized actions completed in FY2023 |
| <div>Real Estate</div> <div></div> | Supporting USACE and external stakeholders by acquiring and maintaining needed land interests. | | | | | |
| | 21,788 land tracts (809,213 acres) | 8,836 active outgrants | 24 Armed Forces Recruiting leases | 14 government housing leases for recruiters | Support non-federal sponsor with cost-share programs (CAP/PL84-99) | |
| <div>Recreation</div> <div></div> | Major activities include sightseeing, camping, boating, swimming, skiing, hiking, fishing, hunting, picnicking, and more. | | | | | |
| | 4 projects consistently rank among the top projects in USACE fee collection | 18.3M annual visits | 164 recreation areas | 5,365 campsites | 58 marinas | \$8.72M fees collected annually (FY22) |
| <div>Emergency Management</div> <div></div> | Dedicated support to military operations and disaster response. | | | | | |
| | 105 Iraq/Afghanistan deployments since 2001 | 27 emergency response events | 708 disaster response volunteers since 2011 | 13 district exercises & partnering meetings per year involving 40 counties, 2 states and 6 federal agencies | | 25 hazard response plans maintained for dams |
| <div>IIS</div> <div></div> | International & Interagency Support - Technical assistance for federal agencies, state and local governments, tribal nations, and private U.S. firms. | | | | | |
| | Department of Veterans Affairs | | VA Law Enforcement Training Center Classroom Complex | | Central Arkansas Veterans Healthcare System Food Service Center | |
| <div>Military Program Support</div> <div></div> | Nationally recognized knowledge and experience. | | | | | |
| | Ebbing Air National Guard Base | | Pine Bluff Arsenal | | Little Rock Air Force Base | |
| | Current USACE Program ~ \$400M new construction and renovation of facilities | | Completed projects include: \$20.5M steam line replacement | | Priority projects: DVQ, dormitory, C-130 Training facility, DLA fueling system | |
| | FMS partners bed down: operational and training facilities for F-16 and F-35 aircraft | | \$21M Bomb storage | | \$24M Reserve center restoration | |
| <div>Military Medical Facilities</div> <div></div> | 1 of 3 medical support teams in the nation. | | | | | |
| | Little rock district has executed over \$2.7B in MSRM projects since 2009. | | Current ongoing workload is around 60 projects in 7 countries valued at \$1B | | Supports all military branches sustainment, restoration, modernization, initial outfitting, and preventative maintenance services hospitals, clinic, medical warehouses, veterinarian clinics etc. | |

Budget / Projects

\$106.4M in FY24 Infrastructure Investment and Jobs Act Funding

- \$91.5M in O&M funds to provide reliable navigation on the MKARNS
- \$12.9M in O&M funds at Bull Shoals and Norfork lakes
- \$2M at Millwood Lake

\$156.4M in the President’s FY 2024 Budget

- \$76.2M for O&M at 12 reservoirs across Arkansas and southern Missouri
- \$80.2M in O&M funds to provide reliable navigation on the MKARNS

\$69.7M in FY23 Infrastructure Investment and Jobs Act Funding

- \$62.7M for O&M funds to provide reliable navigation on the MKARNS
- \$4.2M for emergency repairs to the Okay Levee at Millwood Lake
- \$2M for crane rehab design & repair at Nimrod Lake
- \$850K to complete crane repairs at Clearwater Lake

1044 total contracting actions valued at \$407M were executed in FY23.

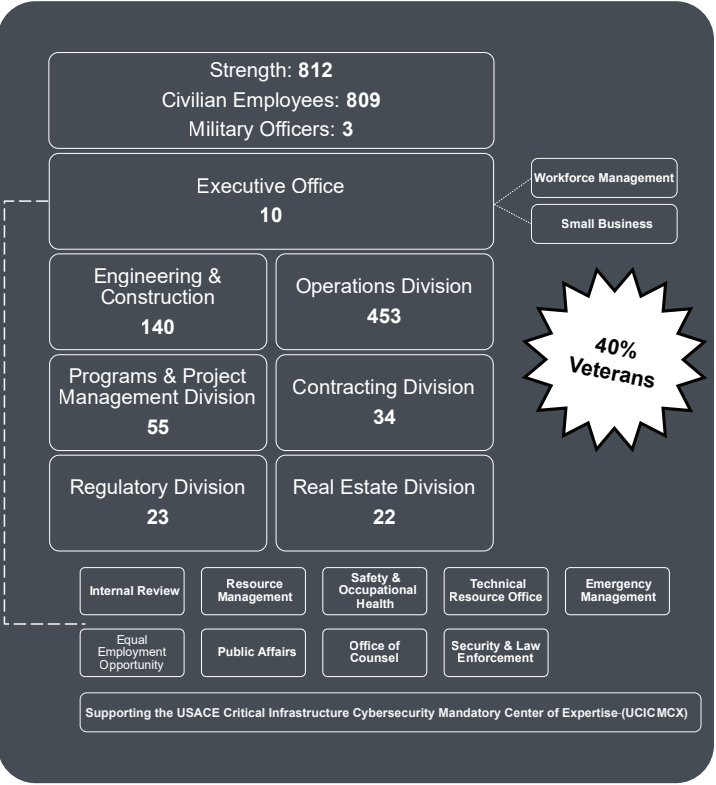
Ongoing significant customer funded hydropower recapitalization program

Contact Us

Physical Address:
700 W. Capitol Avenue
Little Rock, AR 72201

Mailing Address:
P.O Box 867
Little Rock, AR 72203
Phone: (501) 324-5551

Organization Chart



Three Rivers

To preserve navigation on the McClellan-Kerr Arkansas River Navigation System without harming the environment within the project area.

The project area is at the confluence of the Mississippi, White, and Arkansas rivers.

Overland flows have caused significant erosion and head cutting to the land between the Arkansas and White Rivers, threatening the uncontrolled connection of the rivers which would result in the loss of the navigation pool and threatens bottomland hardwood forest.

Ebbing Field

The U.S. Air Force selected Ebbing Air National Guard Base in Fort Smith, Arkansas as a permanent Foreign Military Sales Pilot Training Center for ~36 F-35 and F-16 fighter aircrafts.

USACE is supporting the Air Education and Training Command's bed down mission through planning, design, and construction of essential permanent infrastructure and facilities.

Little Rock District is the USACE Ebbing Program lead with execution support from other districts.

White River Basin Study

A needed system-wide Section 729 Watershed Study changes and water use/availability.

The study is estimated to cost \$5M and take 5-years to complete.

The overall study involves modeling water management scenarios across the basin to examine potential impacts to stakeholders.

The information and analyses may lead to water control plan alternatives that could be evaluated in an operation and maintenance funded NEPA study and decision documents.