



US Army Corps of Engineers®
Little Rock District

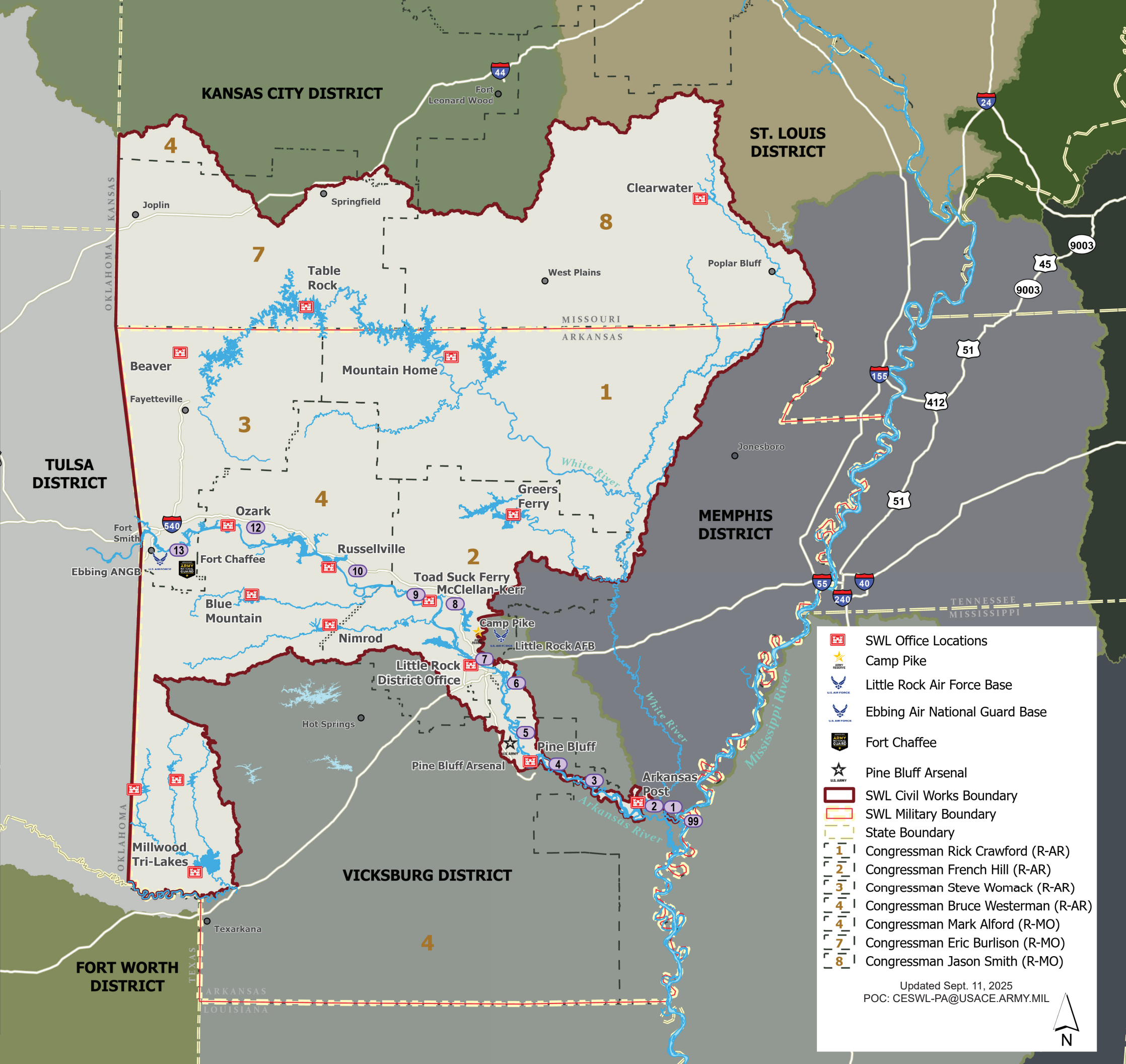
U.S. ARMY

Arkansas River Basin	
McClellan-Kerr Arkansas River Navigation System	
James W. Trimble L&D 13	Wilbur D. Mills L&D 2
Ozark-Jetta Taylor L&D 12	Norrell L&D 1
Dardanelle L&D 10	Montgomery Point L&D 99
Arthur V. Ormond L&D 9	Petit Jean River Blue Mountain Lake
Toad Suck Ferry L&D 8	Fourche La Fave River Nimrod Lake
Murray L&D 7	Little Red River Greers Ferry Lake
David D. Terry L&D 6	Black River Clearwater Lake
Charles D. Maynard L&D 5	Little River Basin Dierks Lake
Emmett Sanders L&D 4	DeQueen Lake
Joe Hardin L&D 3	Gilham Lake
	Millwood Lake

White River Basin	
Beaver Lake	
Table Rock Lake	
Bull Shoals Lake	
Norfolk Lake	
Little Red River Greers Ferry Lake	
Black River Clearwater Lake	

Authorized Purpose

- Flood Risk Reduction
- Federal Hydropower
- Non-Federal Hydropower
- Navigation
- Environmental Stewardship
- Water Supply
- Recreation
- Irrigation



- SWL Office Locations
- Camp Pike
- Little Rock Air Force Base
- Ebbing Air National Guard Base
- Fort Chaffee
- Pine Bluff Arsenal
- SWL Civil Works Boundary
- SWL Military Boundary
- State Boundary
- Congressman Rick Crawford (R-AR)
- Congressman French Hill (R-AR)
- Congressman Steve Womack (R-AR)
- Congressman Bruce Westerman (R-AR)
- Congressman Mark Alford (R-MO)
- Congressman Eric Burlison (R-MO)
- Congressman Jason Smith (R-MO)

Updated Sept. 11, 2025
POC: CESWL-PA@USACE.ARMY.MIL





U.S. ARMY

Little Rock District EST. 1881

Provide vital public engineering services in peace and war to strengthen our Nation's security, energize the economy, and reduce risks from disasters.



US Army Corps
of Engineers®
Little Rock District

Business Lines

	Flood Risk Management Managing water for flood risk, hydropower, navigation, wildlife and recreation. Levee technical assistance and flood fighting operations provided.	12 flood control reservoirs	95 sponsor maintained levee systems	3 USACE maintained levees	\$267M in flood damages prevented by SWL projects in FY24	\$7.7B cumulative damages prevented through FY24
	Navigation Improving and maintaining navigation for economic development and safety by insuring a 9-foot channel depth.	11.5M tons per year 10-year average	13 locks and dams	\$4.3B annual export/import traffic	308 miles of navigation channel	2 survey vessels 4 floating plants
	Hydropower Providing clean, renewable energy.	7 hydroelectric power plants	1072MW installed hydropower generation capacity	\$266.9M annual benefits to the Nation	344K household production each year	Support 4 non-federal hydropower projects on the Arkansas river
	Water supply Supplying local and state institutions with high quality drinking water for homes and businesses.	31 water supply agreements	479,000 acre-feet of water supply storage	(FY25) \$3.8M in revenue returned to the U.S. Treasury		
	Environmental Stewardship Managing public resources in a responsible and sustainable manner.	7 lakes with shoreline management plans	26 federally recognized tribal partners	28 known threatened and endangered species	313 restoration areas	Invasive species management
	Regulatory Committed to protecting the nation's aquatic resources and navigation capacity, while allowing reasonable development through fair and balanced decisions. SWL serves as the lead regulatory district in Arkansas.	Section 404 Clean Water Act (1972) – permits for the discharge of dredged or fill material in waters of the U.S.		Section 10 Rivers & Harbors act (1899) – permits for work in, over, or under navigable waters	24 approved mitigation banks and 2 in lieu fee	3,570 finalized actions completed in FY24
	Real Estate Supporting USACE and external stakeholders by acquiring and maintaining needed land interests.	21,788 land tracts (809,213 acres)	8,814 active outgrants	23 Armed Forces Recruiting leases	5 government housing leases for recruiters	Support non-federal sponsor with cost-share programs (CAP/PL84-99)
	Recreation Major activities include sightseeing, camping, boating, swimming, skiing, hiking, fishing, hunting, picnicking, and more. (FY24)	4 projects consistently rank among the top projects in USACE fee collection	20.7M annual visits	168 recreation areas	5,365 campsites	58 marinas \$9.2M fees collected annually
	Emergency Management Dedicated support to military operations and disaster response.	106 Overseas Contingency Operations deployments supporting warfighters	29 Emergency response events since 2011	675 disaster response volunteers since 2011	28 district exercises & partnering meetings per year involving 40 counties, 2 states and 6 federal agencies	25 hazard response plans maintained for dams
	IIS International & Interagency Support - Technical assistance for federal agencies, state and local governments, tribal nations, and private U.S. firms.	VA Law Enforcement Training Center Completed projects include: \$8M Dining Facility \$17M Classroom Complex	VA Law Enforcement Training Center \$16M Personnel Security Adjudication Center Addition \$19M Dorm Renovation	Central Arkansas Veterans Healthcare System \$17M Food Service Center	Foreign Military Sales \$362M Ebbing Air National Guard operational and training facilities for F-16 and F-35 aircraft	
	Military Program Support Nationally recognized knowledge and experience.	Ebbing Air National Guard Base \$292M new construction and renovation of facilities	Little Rock Air Force Base Completed projects include: \$28M Airmen Dorm \$36M C-130 Fuselage Trainer \$16M DLA Fueling System \$48M Visitors Quarters	Pine Bluff Arsenal \$26M Access Control Point \$27M Water Distribution Replacement \$28M Ambulatory Care Clinic \$12M Ammunition Production Facility	63rd Readiness Division 75 service contracts across 7 states \$24M Reserve center restoration	
	Military Medical Facilities Provides support for sustainment, restoration, modernization, initial outfitting, and operations and maintenance services for hospitals, clinics, medical warehouses, veterinarian clinics, and similar medical facilities across all military branches.	Executed over \$3.5B in MSRM projects since 2009 - Projects ranging from \$100K to \$130M		Ongoing workload is ~50 projects valued at \$750M in 3 countries, primarily CONUS, HI, AK and U.S. territories	1 of 3 medical support teams in the nation	

Budget / Projects

\$125.2M in President's FY26 Budget
 •\$64.8M for O&M at 12 reservoirs across Arkansas and southern Missouri
 •\$60.4M in O&M funds to provide reliable navigation on the MKARNS
 •\$6M in O&M Funds for continuing Tainter Gate repairs at Ormond Lock & Dam

\$119.6M in FY25 Program
 •\$64.9M for O&M at 12 reservoirs across Arkansas and southern Missouri
 •\$54.7M in O&M funds to provide reliable navigation on the MKARNS

\$103.17M to complete the Three Rivers Project on the lower MKARNS was received in a separate FY 2024 appropriations bill

\$186M in FY22 and FY23 Infrastructure Investment and Jobs Act funding and FY24 O&M funds being executed for the 110ft Stoplog slot program at 11 Locks along the MKARNS

897 total contracting actions valued at \$462M were executed in FY24.

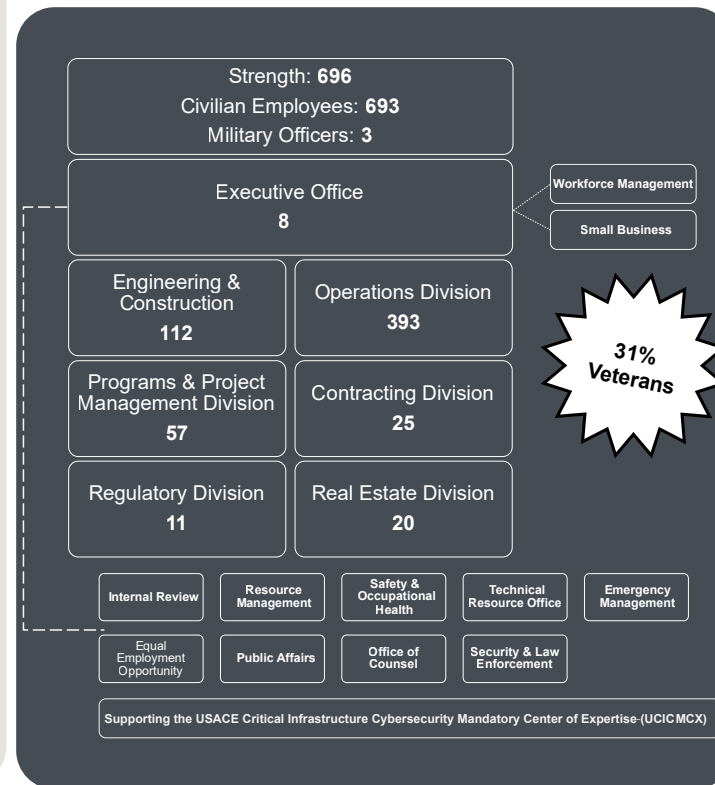
Customer funded hydropower recapitalization program includes \$260M in ongoing projects across the 7 powerhouses and \$165M in approved projects awaiting funds.

Contact Us

Physical Address: 700 W. Capitol Avenue
Little Rock, AR 72201

Mailing Address: P.O Box 867
Little Rock, AR 72203
Phone: (501) 324-5551

Organization Chart



Major Projects

Three Rivers

To preserve navigation on the McClellan-Kerr Arkansas River Navigation System without harming the environment within the project area.

The project area is at the confluence of the Mississippi, White, and Arkansas rivers.

Overland flows have caused significant erosion and head cutting to the land between the Arkansas and White Rivers, threatening the uncontrolled connection of the rivers which would result in the loss of the navigation pool and threatens bottomland hardwood forest.

Ebbing Field

The U.S. Air Force selected Ebbing Air National Guard Base in Fort Smith, Arkansas as a permanent Foreign Military Sales Pilot Training Center for ~36 F-35 and F-16 fighter aircrafts.

USACE is supporting the Air Education and Training Command's bed down mission through planning, design, and construction of essential permanent infrastructure and facilities.

Little Rock District is the USACE Ebbing Program lead with execution support from other districts.

Poland - Singapore - Germany - Finland

White River Basin Study

A Section 729 Watershed Study in cooperation with Arkansas State University is underway to comprehensively examine the availability and usage of the water resources in the White River Basin.

The study is estimated to cost \$5.3M and take 5-years to complete.

The overall study involves modeling water management scenarios across the basin to examine potential impacts to stakeholders.

The information and analyses may lead to water control plan alternatives that could be evaluated in an operation and maintenance funded NEPA study and decision documents.