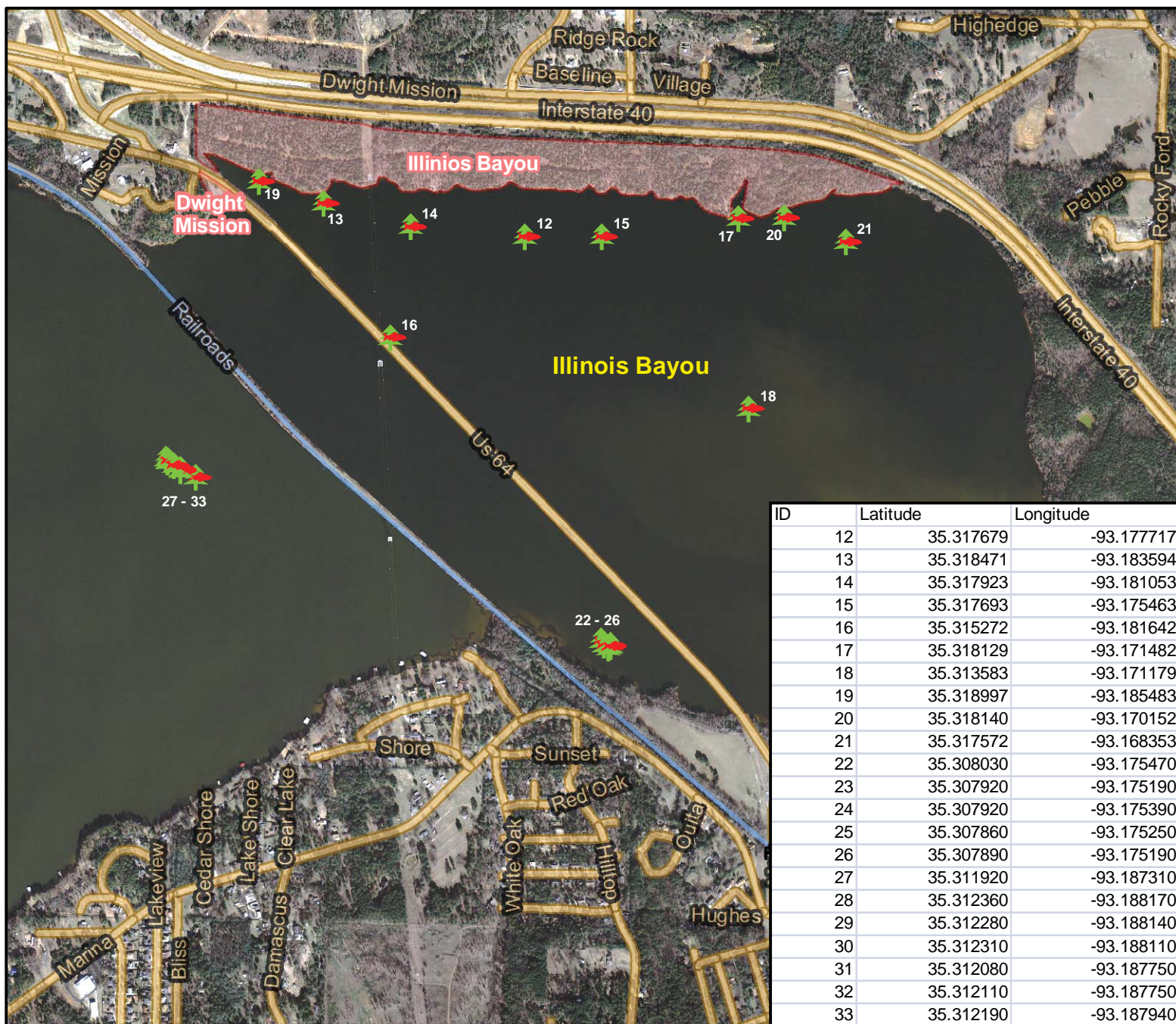


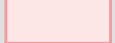



Sunken Fish Habitat (Illinois Bayou) - 2008

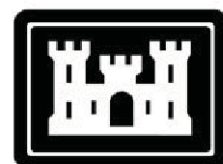
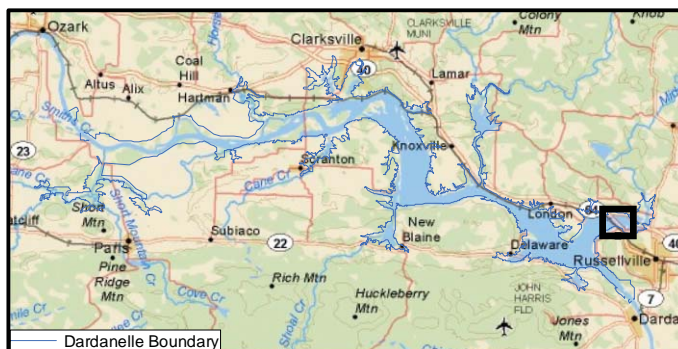
Lake Dardanelle



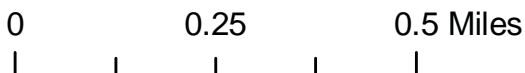
ID	Latitude	Longitude
12	35.317679	-93.177717
13	35.318471	-93.183594
14	35.317923	-93.181053
15	35.317693	-93.175463
16	35.315272	-93.181642
17	35.318129	-93.171482
18	35.313583	-93.171179
19	35.318997	-93.185483
20	35.318140	-93.170152
21	35.317572	-93.168353
22	35.308030	-93.175470
23	35.307920	-93.175190
24	35.307920	-93.175390
25	35.307860	-93.175250
26	35.307890	-93.175190
27	35.311920	-93.187310
28	35.312360	-93.188170
29	35.312280	-93.188140
30	35.312310	-93.188110
31	35.312080	-93.187750
32	35.312110	-93.187750
33	35.312190	-93.187940

 Fish Habitat
 Local Roads (ACF)
 Parks





US Army Corps of Engineers®
Little Rock District



This image is an approximate representation and may not be used as a legal document due to errors in the generation process. Copies of survey plats and shoreline allocation maps may be obtained through the Russellville Project Office. The Corps of Engineers is not responsible for any incorrect information provided in this map.