



**US ARMY Corps  
Of Engineers®**  
Little Rock District

# JOINT PUBLIC NOTICE

*CORPS OF ENGINEERS – STATE OF MISSOURI*

**Application Number: SWL 2011-00260**

**Date: March 10, 2014**

**Comments Due: March 31, 2014**

---

**TO WHOM IT MAY CONCERN: Comments are invited on the work described below. Please see the Public Involvement section for details on submitting comments.**

Point of Contact. If additional information is desired, please contact the project manager, Louis Clarke, telephone number: (870) 886-3610, mailing address: Little Rock District Corps of Engineers, Walnut Ridge Regulatory Field Office, PO Box 865, Walnut Ridge, Arkansas 72476-0865, email address: [Louis.E.Clarke@usace.army.mil](mailto:Louis.E.Clarke@usace.army.mil).

Project Information. Pursuant to Section 404 of the Clean Water Act (33 U.S. Code 1344), notice is hereby given that

**Mr. Doug Bagby  
City of Poplar Bluff  
101 Oak Street  
Poplar Bluff, Missouri 63901**

has requested authorization for the placement of dredged and fill material in waters of the United States associated with the construction of Shelby Road Phase II. The proposed project is located in wetlands and Pike Creek, in sections 4, 5, and 9, T. 24 N., R. 6 E., Poplar Bluff, Butler County, Missouri.

The basic purpose of the project is to reduce traffic on Business 67 through town. The overall purpose of the project is to extend Shelby Road to the south where it will connect with Highway 53. The project is not water dependent.

Most of the proposed road extends through pasture areas, but a portion crosses a wetland north of a sewer lagoon and a wetland near Highway 53. The combined wetland impacts from this proposed project are estimated to be 3.3 acres (1.0 acre northwest of a sewer lagoon which has been filled and 2.3 acres near Highway 67B).

The City proposes to provide mitigation for impacts to 3.3 acres of wetlands at an off-site location. The method of mitigation proposed is preservation.

The location and general plan for the proposed work are shown on the enclosed sheets.

Water Quality Certification. By copy of this public notice, the applicant is requesting certification from the Missouri Department of Natural Resources that the operation of the proposed facility will apparently not violate the existing water quality criteria of the State of Missouri. The Commission hereby gives notice of its intent to certify this construction. A Corps of Engineers permit will not be issued until such certification has been granted. Commenters are requested to furnish a copy of their comments to the Missouri Department of Natural Resources.

Cultural Resources. A Corps staff archeologist will review topographic maps, the National Register of Historic Places, and other data on reported sites in the area. The District Engineer invites responses to this public notice from Native American Nations or tribal governments; Federal, State, and local agencies; historical and archeological societies; and other parties likely to have knowledge of or concerns with historic properties in the area.

Endangered Species. Our preliminary determination is that the proposed activity will not affect listed Endangered Species or their critical habitat. A copy of this notice is being furnished to the U.S. Fish and Wildlife Service and appropriate state agencies and constitutes a request to those agencies for information on whether any listed or proposed-to-be-listed endangered or threatened species may be present in the area which would be affected by the proposed activity.

Flood Plain. We are providing copies of this notice to appropriate flood plain officials in accordance with 44 CFR Part 60 (Flood Plain Management Regulations Criteria for Land Management and Use) and Executive Order 11988 on Flood Plain Management.

Section 404(b)(1) Guidelines. The evaluation of activities to be authorized under this permit which involves the discharge of dredged or fill material will include application of guidelines promulgated by the Administrator, Environmental Protection Agency, under authority of Section 404(b) of the Clean Water Act. These guidelines are contained in 40 Code of Federal Regulations (CFR) 230.

Public Involvement. Any interested party is invited to submit to the above-listed POC written comments or objections relative to the proposed work on or before **March 31, 2014**. Substantive comments, both favorable and unfavorable, will be accepted and made a part of the record and will receive full consideration in determining whether this work would be in the public interest. The decision whether to issue a permit will be based on an evaluation of the probable impact including cumulative impacts of the proposed activity on the public interest. That decision will reflect the national concern for both protection and utilization of important resources. The benefit which reasonably may be expected to accrue from the proposal must be balanced against its reasonably foreseeable detriments. All factors which may be relevant to the proposal will be considered including the cumulative effects thereof; among those are conservation, economics, aesthetics, general environmental concerns, wetlands, historic properties, fish and wildlife values, flood hazards, flood plain values, land use, navigation, shoreline erosion and accretion, recreation, water supply and conservation, water quality, energy needs, safety, food and fiber production, mineral needs, considerations of property ownership and, in general, the needs and welfare of the people.

The Corps of Engineers is soliciting comments from the public; Federal, state, and local agencies and officials; Indian Tribes; and other interested parties in order to consider and evaluate the impacts of this proposed activity. Any comments received will be considered by the Corps of Engineers to determine whether to issue, modify, condition or deny a permit for this proposal. To make this decision, comments are used to assess impacts on endangered species, historic properties, water quality, general environmental effects, and the other public interest factors listed above. Comments are used in the preparation of an Environmental Assessment and/or an Environmental Impact Statement pursuant to the National Environmental Policy Act. Comments are also used to determine the need for a public hearing and to determine the overall public interest of the proposed activity.

Any person may request in writing within the comment period specified in this notice that a public hearing be held to consider this application. Requests for public hearings shall state, with particularity, the reasons for holding a public hearing. The District Engineer will determine if the issues raised are substantial and whether a hearing is needed for making a decision.

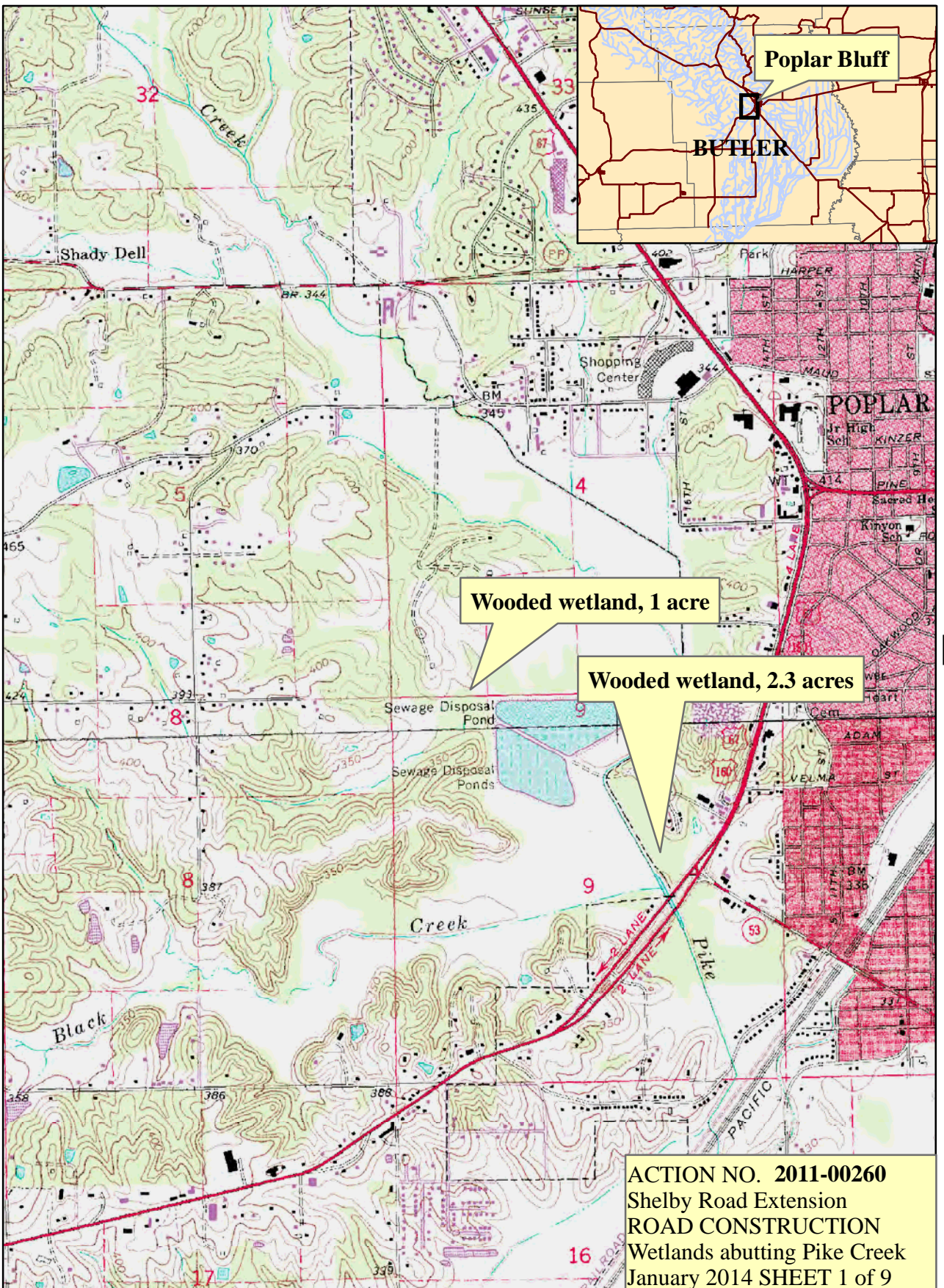
**NOTE:** The mailing list for this Public Notice is arranged by state and county(s) where the project is located, and also includes any addressees who have asked to receive copies of all public notices. Please discard notices that are not of interest to you. If you have no need for any of these notices, please advise us so that your name can be removed from the mailing list.

Enclosure

Approximate Coordinates of Project Center

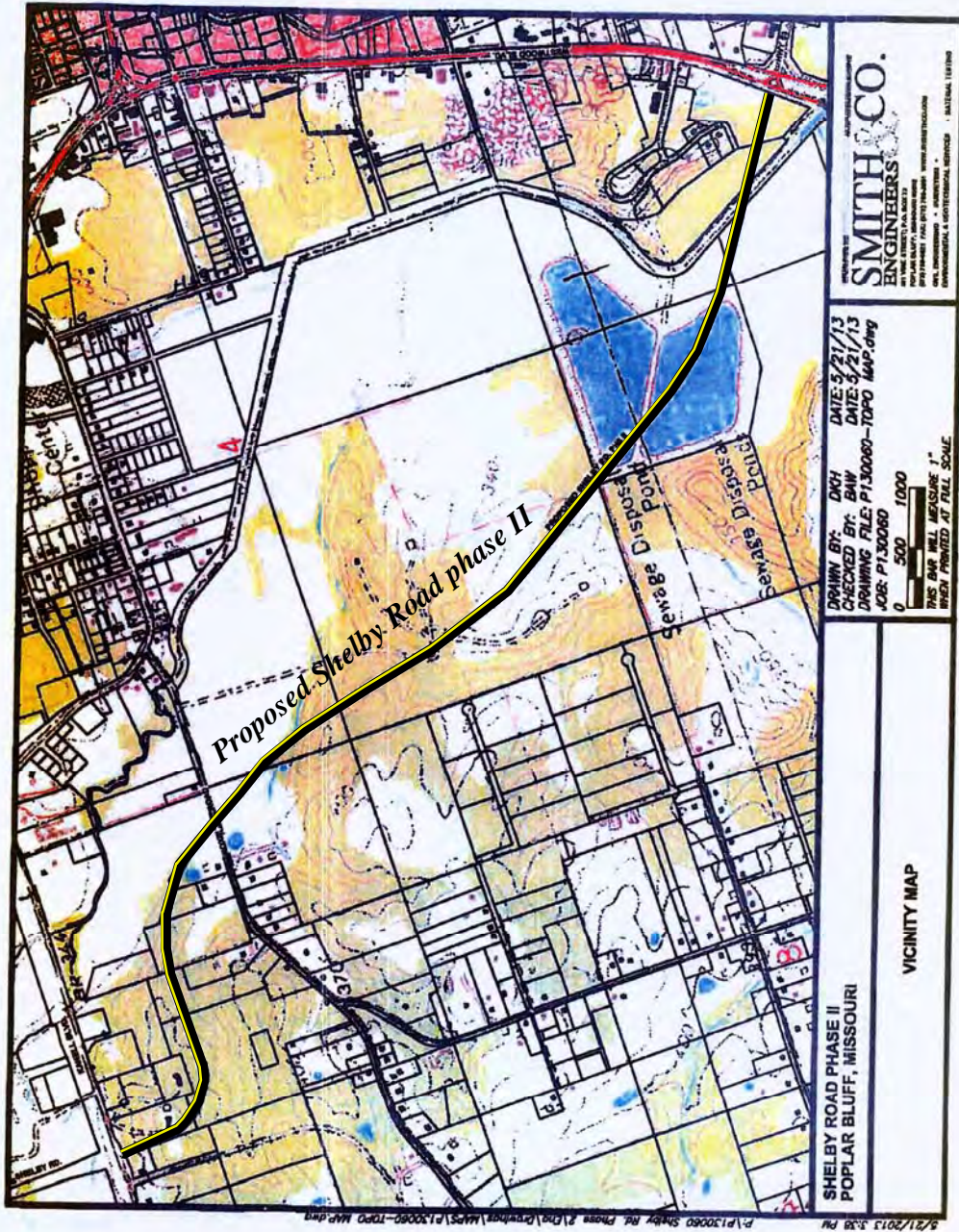
Latitude: **36.766624**                      Longitude: **-90.436095**

UTM Zone: **15**              North: **4072050**                      East: **728843**



5,200

Feet



SMITH & CO.  
ENGINEERS

DATE: 9/21/13  
DATE: 9/21/13  
DRAWING FILE: P130060-TOPO MAP.dwg  
JOB: P130060

0 500 1000

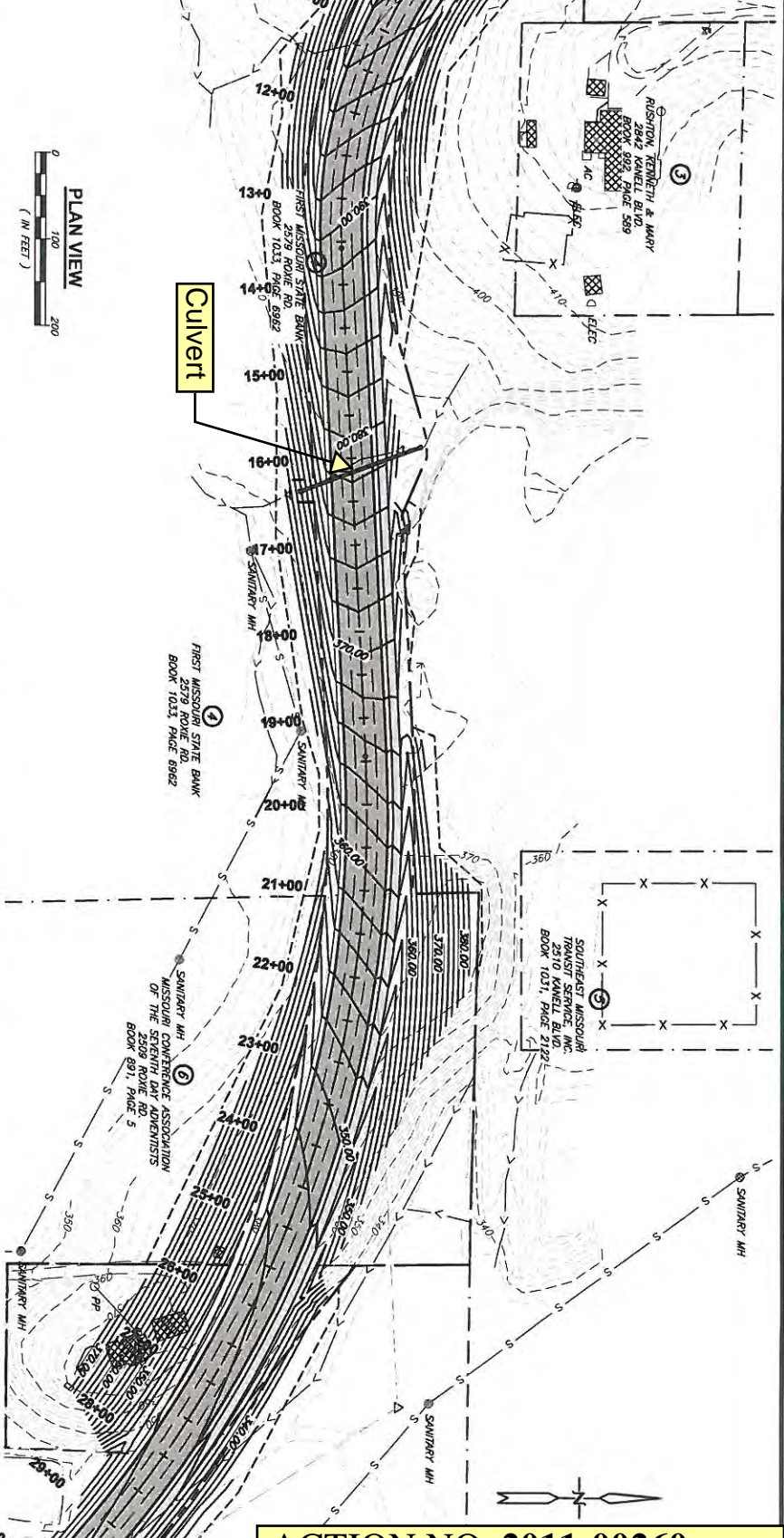
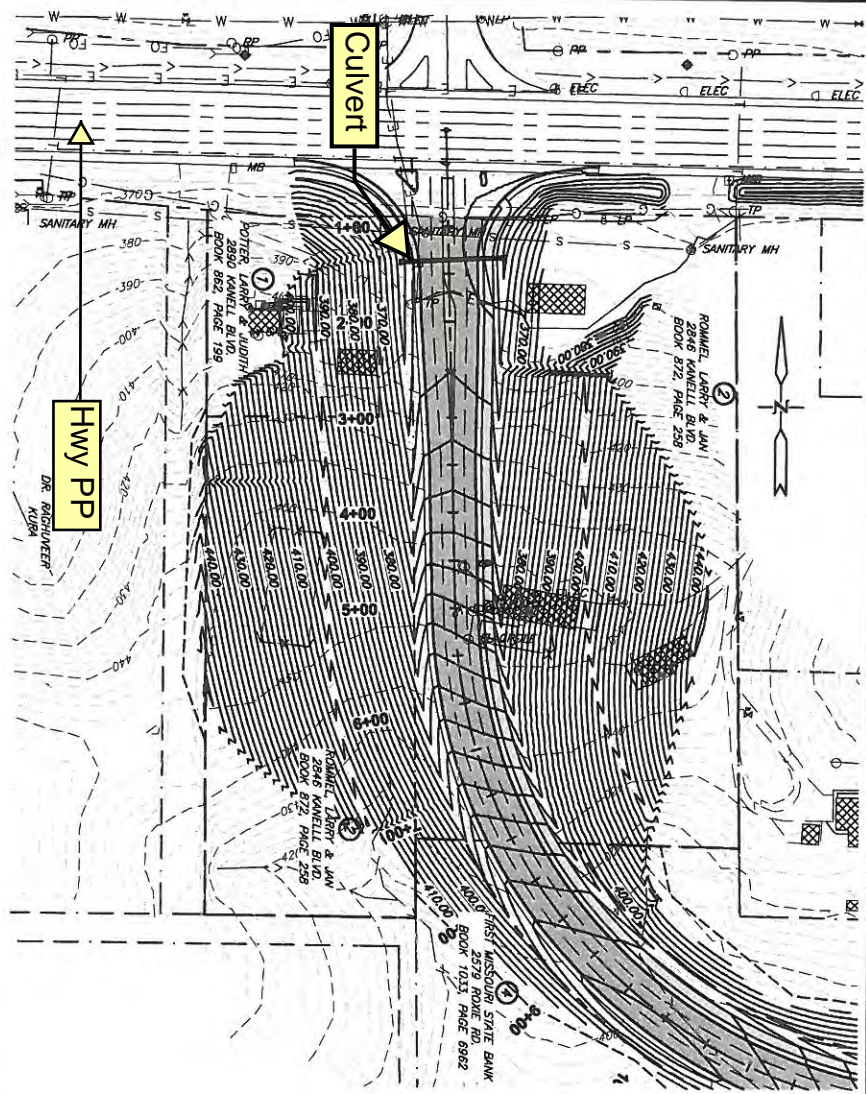
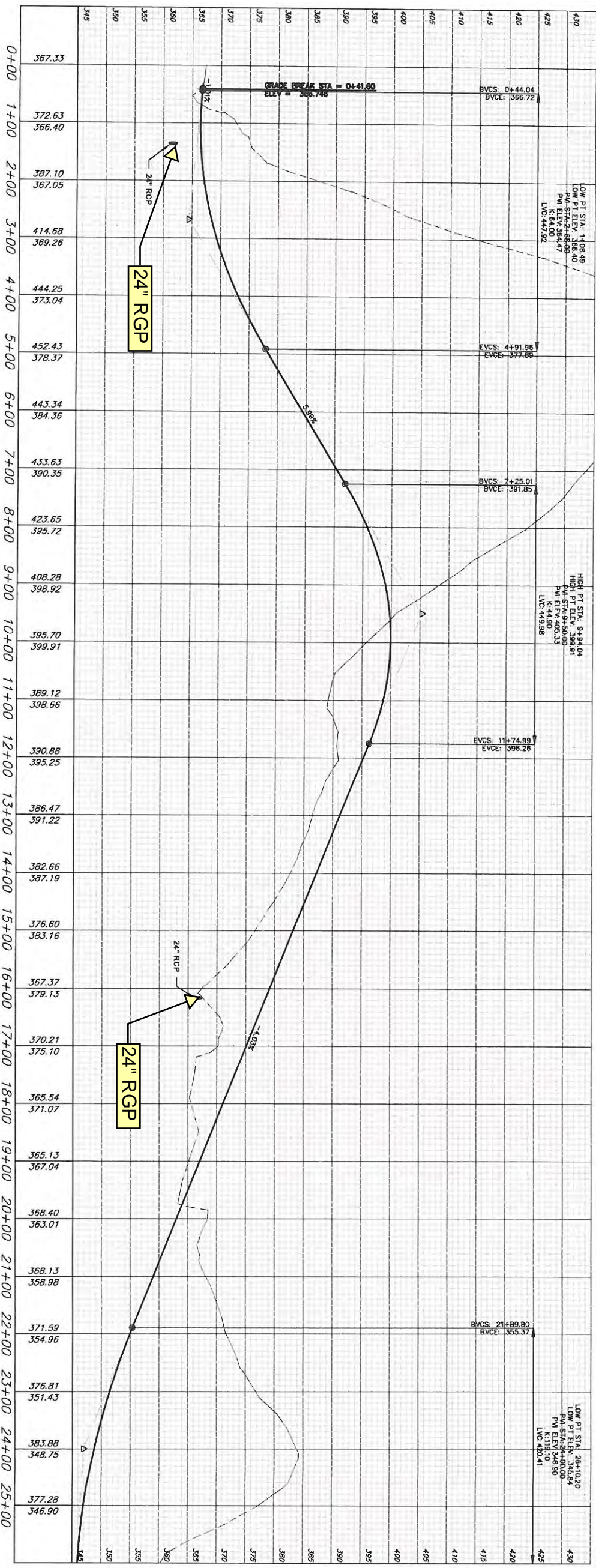
THIS MAP MEASURES 1" = 1000'  
WHEN PRINTED AT FULL SCALE

SHELBY ROAD PHASE II  
POPLAR BLUFF, MISSOURI

VICINITY MAP



ACTION NO. 2011-00260  
Shelby Road Extension  
ROAD CONSTRUCTION  
Wetlands abutting Pike Creek  
January 2014 SHEET 2 of 9



REVIEW COPY: January 2

**ACTION NO. 2011-00260**  
 Shelby Road Extension  
 ROAD CONSTRUCTION  
 Wetlands Abutting Pike Creek  
 January 2014 Sheet 3 of 9

SHELBY ROAD - PHASE II  
 POPLAR BLUFF, MISSOURI

**SHELBY ROAD PLAN & PROFILE**

PROJECT #: P130060  
 DRAWING #: 3277.03  
 SHEET: 2

ESTABLISHED 1888 AN EMPLOYEE OWNED COMPANY

**SMITH & CO. ENGINEERS**

901 VINE STREET, P.O. BOX 72  
 POPLAR BLUFF, MISSOURI 63902  
 (573) 785-9621 FAX: (573) 785-2651 WWW.SHSMITHCO.COM

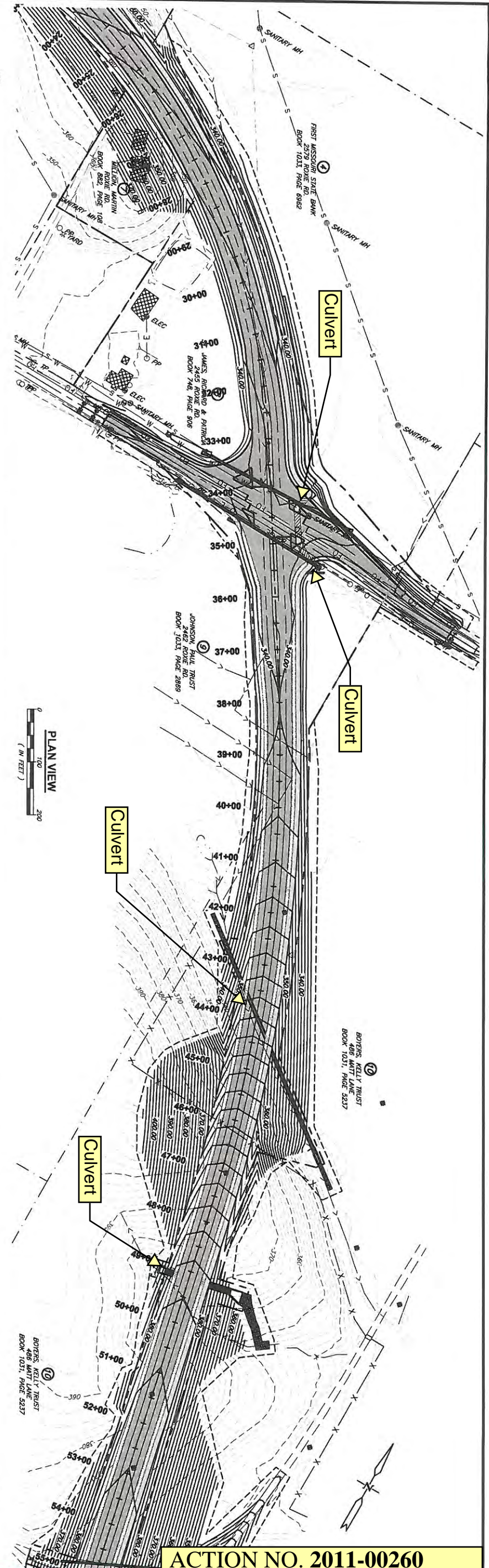
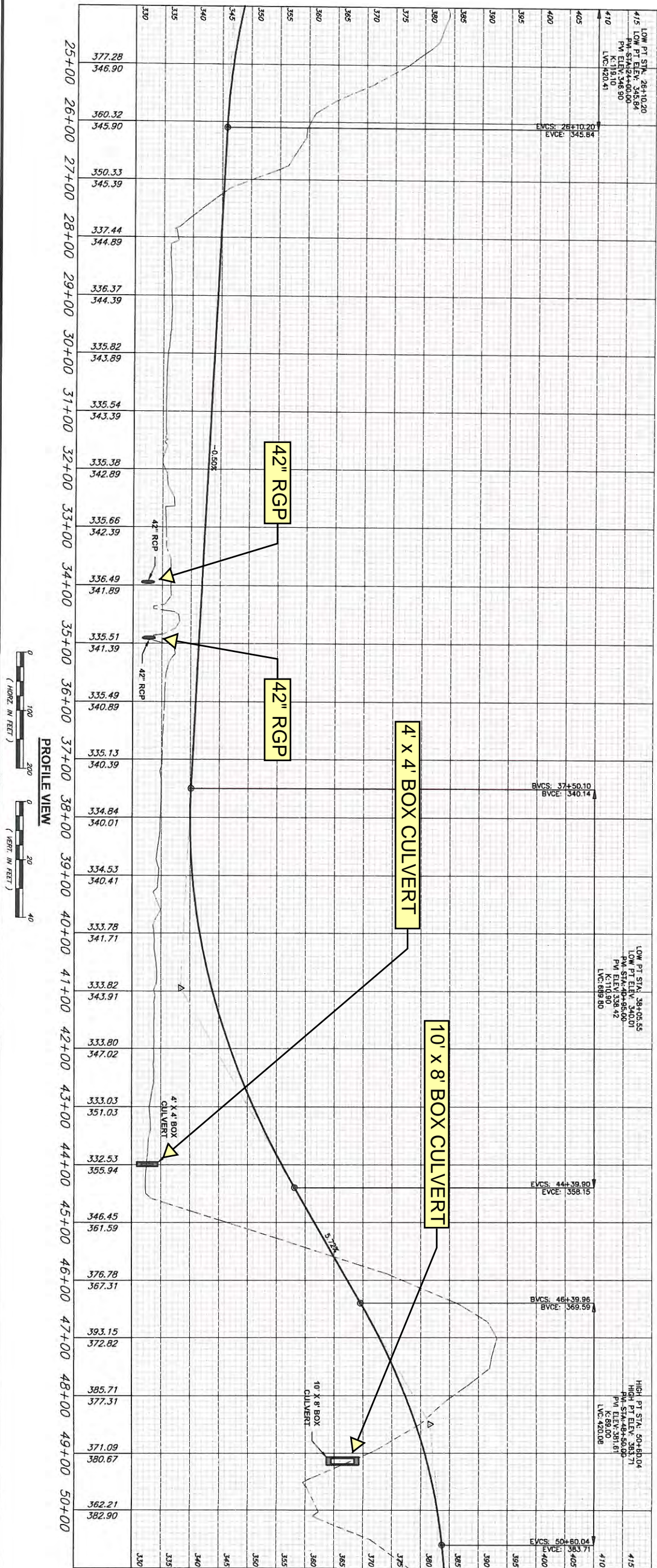
CIVIL ENGINEERING • SURVEYING • ENVIRONMENTAL & GEOTECHNICAL SERVICES • MATERIAL TESTING

SURVEYED BY: RML/CB  
 DESIGNED BY: DDT  
 DRAWN BY: DKH  
 CHECKED BY: WJC  
 FIELD BOOK: 413

DATE: 3/13  
 DATE: 4/13  
 DATE: 4/13  
 DATE: 4/13

0 50 100  
 THIS BAR WILL MEASURE 1" WHEN PRINTED AT FULL SCALE.

NO.	REVISIONS



**SHELBY ROAD - PHASE II**  
**POPLAR BLUFF, MISSOURI**

**SHELBY ROAD PLAN & PROFILE**

PROJECT #: P130060  
 DRAWING #: 3277.03  
 SHEET: 3

ESTABLISHED 1966 AN EMPLOYEE OWNED COMPANY

**SMITH & CO. ENGINEERS**

901 VINE STREET, P.O. BOX 72  
 POPLAR BLUFF, MISSOURI 63902  
 (573) 785-9621 FAX: (573) 785-2851 WWW.SHSMITHCO.COM

CIVIL ENGINEERING • SURVEYING • ENVIRONMENTAL & GEOTECHNICAL SERVICES • MATERIAL TESTING

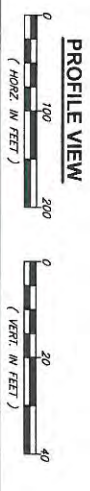
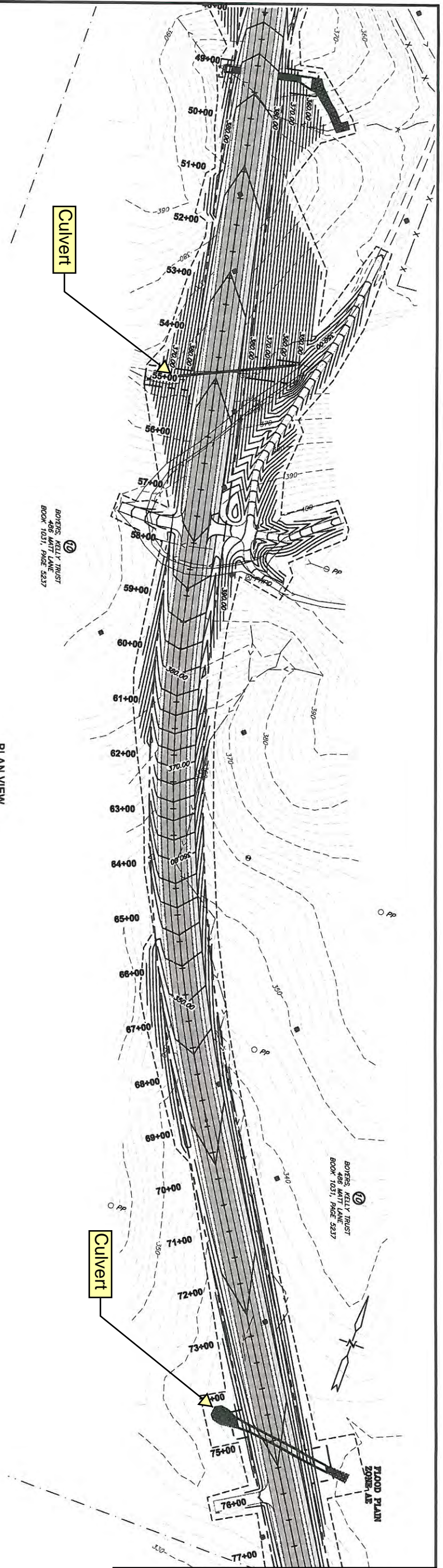
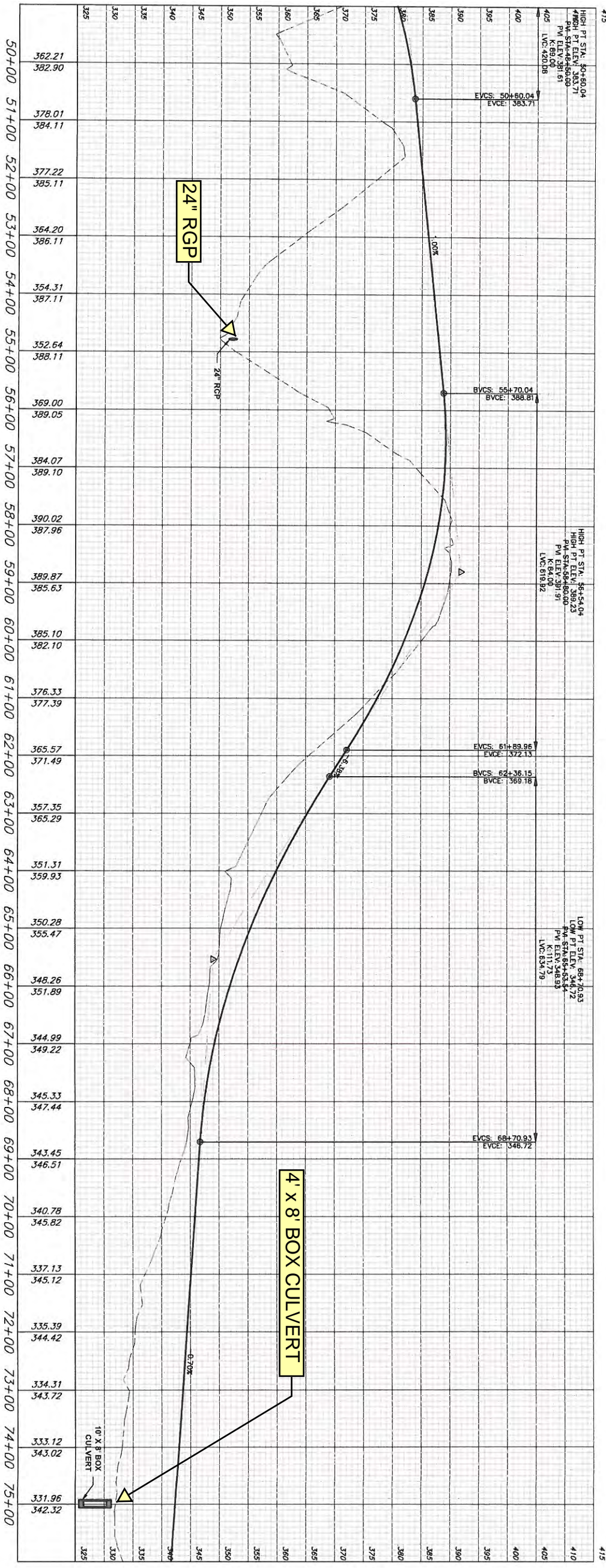
**REVIEW COPY: January 2014**

SURVEYED BY: RML/CB DATE: 3/13  
 DESIGNED BY: DDT DATE: 4/13  
 DRAWN BY: DKH DATE: 4/13  
 CHECKED BY: WJC DATE: 4/13  
 FIELD BOOK: 413

0 50 100  
 THIS BAR WILL MEASURE 1" WHEN PRINTED AT FULL SCALE.

NO.	REVISIONS

**ACTION NO. 2011-00260**  
**Shelby Road Extension**  
**ROAD CONSTRUCTION**  
**Wetlands Abutting Pike Creek**  
 January 2014 Sheet 4 of 9



SHELBY ROAD - PHASE II  
 POPLAR BLUFF, MISSOURI

**SHELBY ROAD PLAN & PROFILE**

PROJECT #: P130080  
 DRAWING #: 3277.03  
 SHEET: 4

ESTABLISHED 1998 AN EMPLOYEE OWNED COMPANY

**SMITH & CO. ENGINEERS**

901 VINE STREET, P.O. BOX 72  
 POPLAR BLUFF, MISSOURI 63902  
 (573) 785-9621 FAX: (573) 785-2651 WWW.SHSMITHCO.COM

CIVIL ENGINEERING • SURVEYING • ENVIRONMENTAL & GEOTECHNICAL SERVICES • MATERIAL TESTING

DESIGNED BY: DDT  
 DRAWN BY: DKH  
 CHECKED BY: WVC  
 FIELD BOOK: 413

DATE: 3/13  
 DATE: 4/13  
 DATE: 4/13

0 50 100  
 THIS BAR WILL MEASURE 1" WHEN PRINTED AT FULL SCALE.

NO.	REVISIONS

**ACTION NO. 2011-00260**

**Shelby Road Extension**

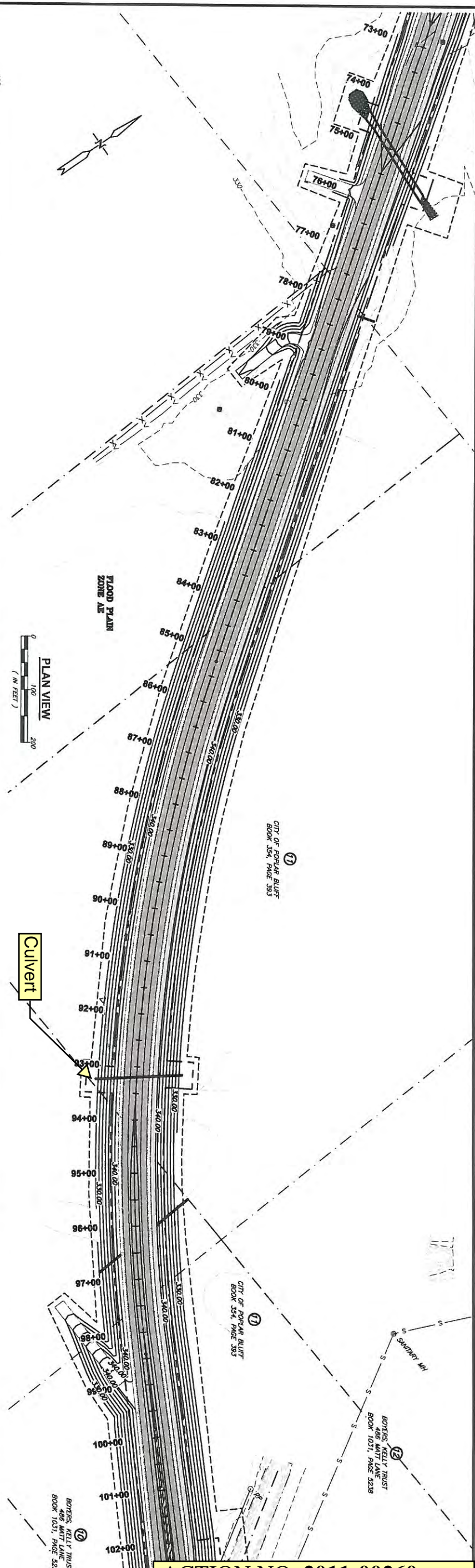
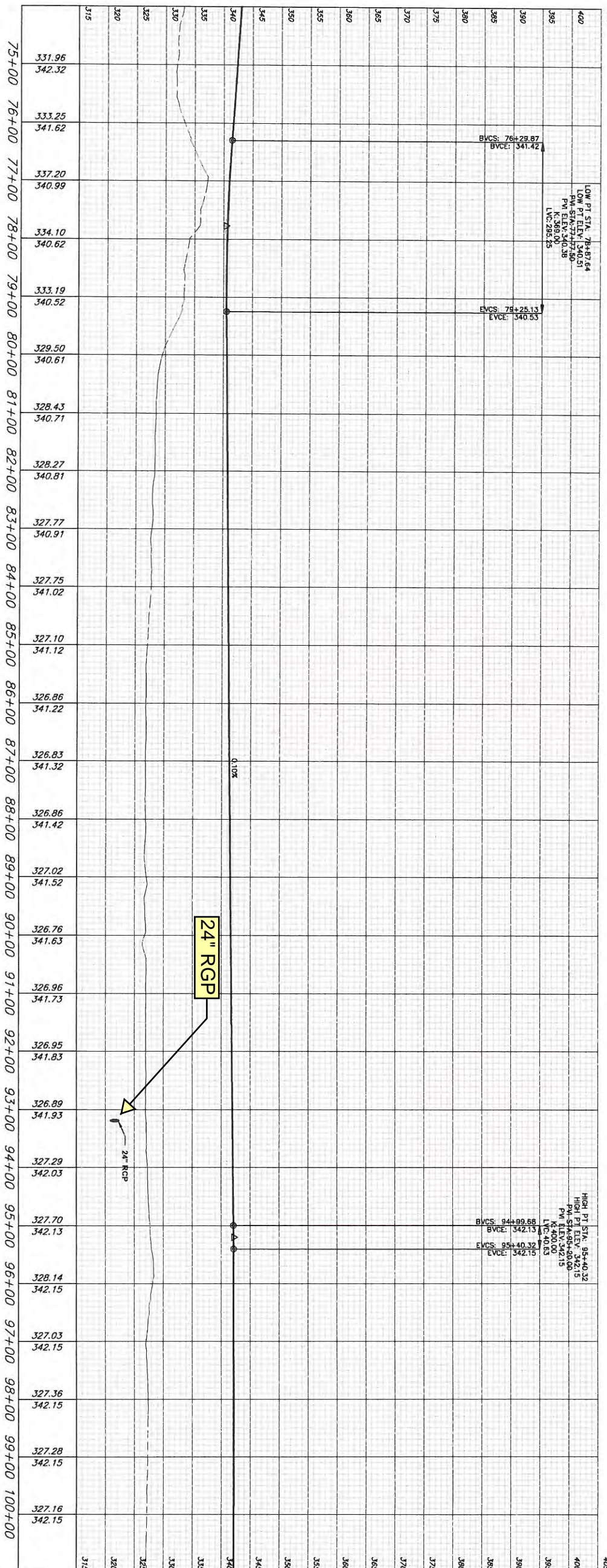
**ROAD CONSTRUCTION**

Wetlands Abutting Pike Creek

January 2014 Sheet 5 of 9

REVIEW COPY: January 2014





REVIEW COPY: January 2

**ACTION NO. 2011-00260**  
 Shelby Road Extension  
 ROAD CONSTRUCTION  
 Wetlands Abutting Pike Creek  
 January 2014 Sheet 6 of 9

**SHELBY ROAD - PHASE II**  
 POPLAR BLUFF, MISSOURI

**SHELBY ROAD PLAN & PROFILE**

PROJECT #: P130060  
 DRAWING #: 3277.03  
 SHEET: 5

ESTABLISHED 1906 AN EMPLOYEE OWNED COMPANY

**SMITH & CO. ENGINEERS**

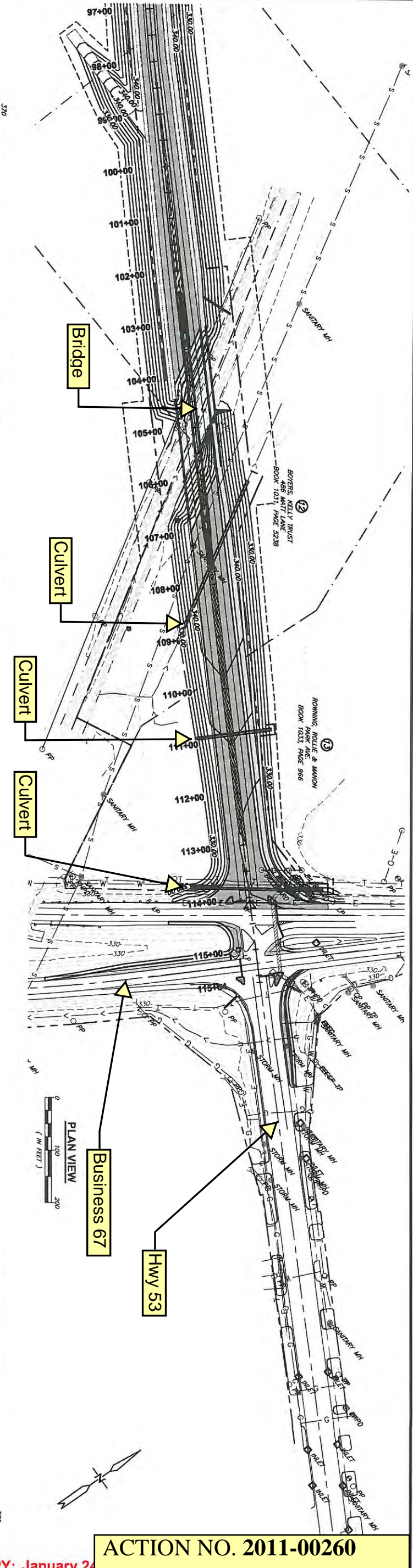
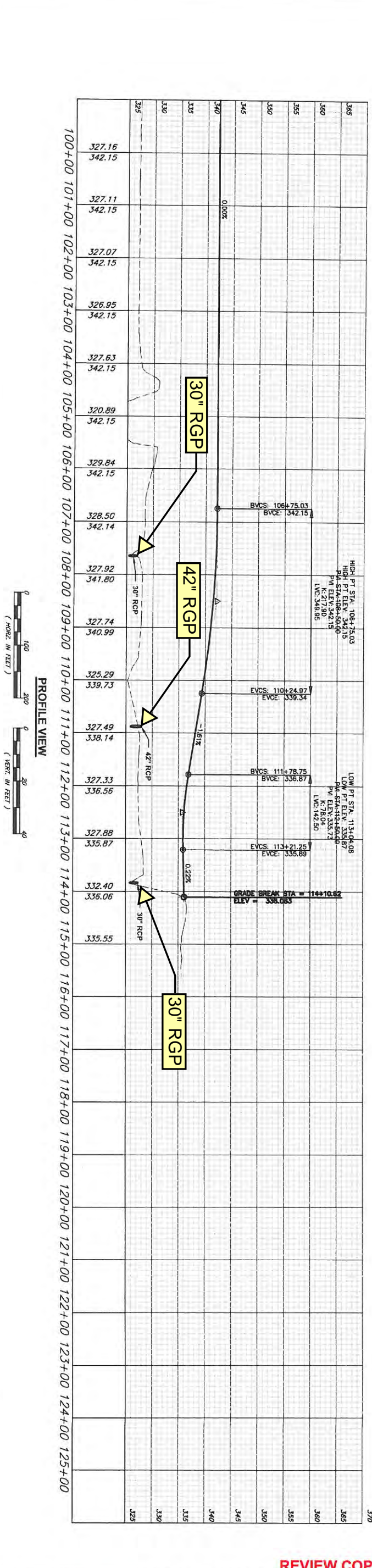
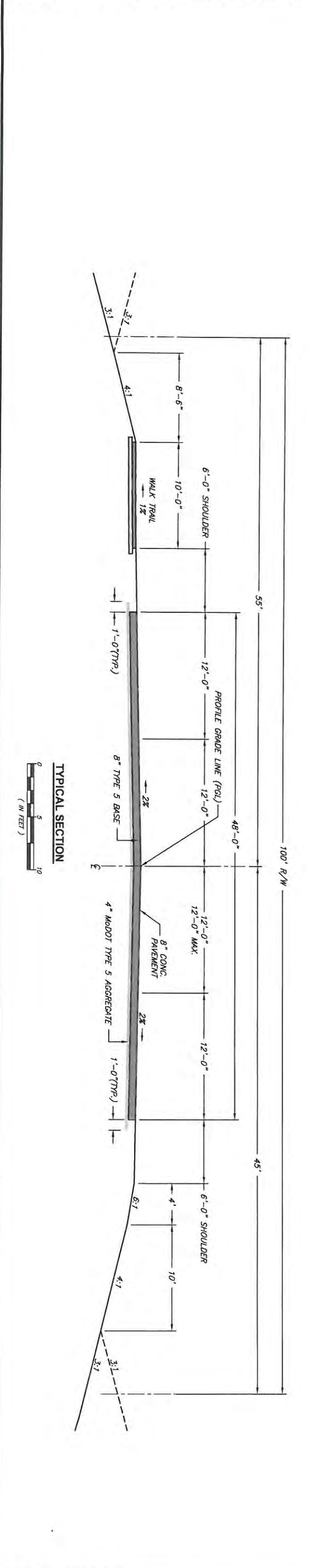
901 VINE STREET, P.O. BOX 72  
 POPLAR BLUFF, MISSOURI 63902  
 (573) 785-9621 FAX: (573) 785-2651 WWW.SHSMITHCO.COM

CIVIL ENGINEERING • SURVEYING • ENVIRONMENTAL & GEOTECHNICAL SERVICES • MATERIAL TESTING

SURVEYED BY: RML/CB DATE: 3/13  
 DESIGNED BY: DDT DATE: 4/13  
 DRAWN BY: DKH DATE: 4/13  
 CHECKED BY: WJC DATE: 4/13  
 FIELD BOOK: 413

0 50 100  
 THIS BAR WILL MEASURE 1" WHEN PRINTED AT FULL SCALE

NO.	REVISIONS



SHELBY ROAD - PHASE II  
POPLAR BLUFF, MISSOURI

**SHELBY ROAD PLAN & PROFILE**

PROJECT #: P130060  
DRAWING #: 3277.03  
SHEET: 6

ESTABLISHED 1888 AN EMPLOYEE OWNED COMPANY

**SMITH & CO. ENGINEERS**

901 VINE STREET, P.O. BOX 72  
POPLAR BLUFF, MISSOURI 63902  
(573) 785-9621 FAX: (573) 785-2651 WWW.SHSMITHCO.COM

CIVIL ENGINEERING • SURVEYING • ENVIRONMENTAL & GEOTECHNICAL SERVICES • MATERIAL TESTING

**REVIEW COPY: January 24**

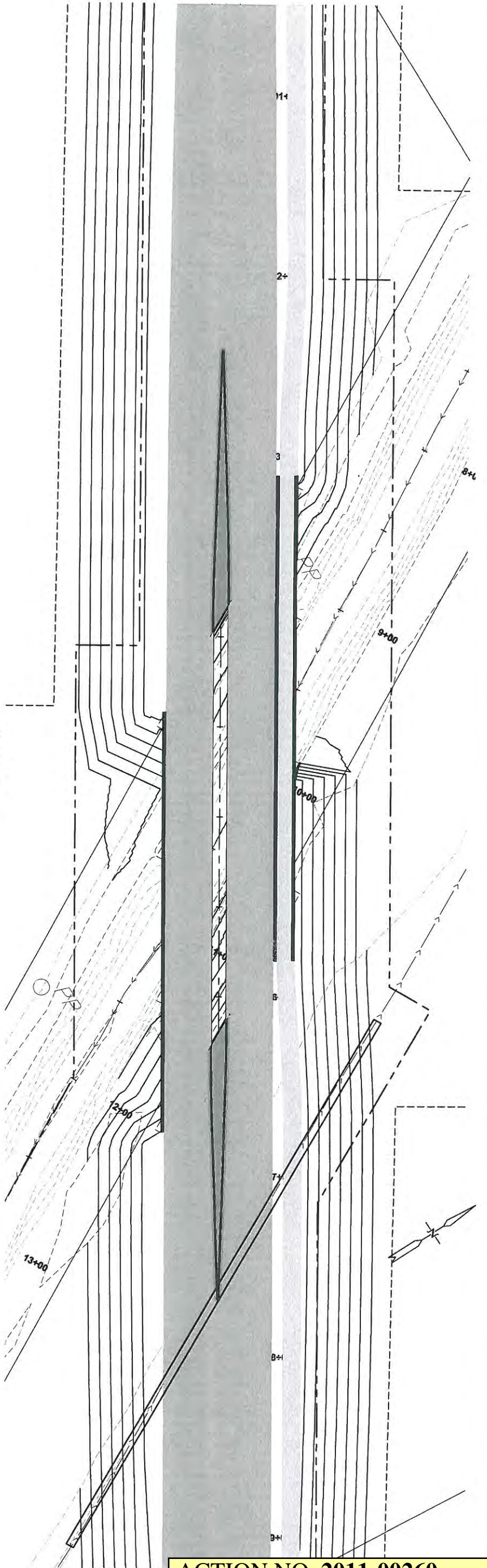
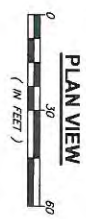
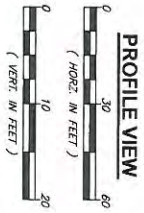
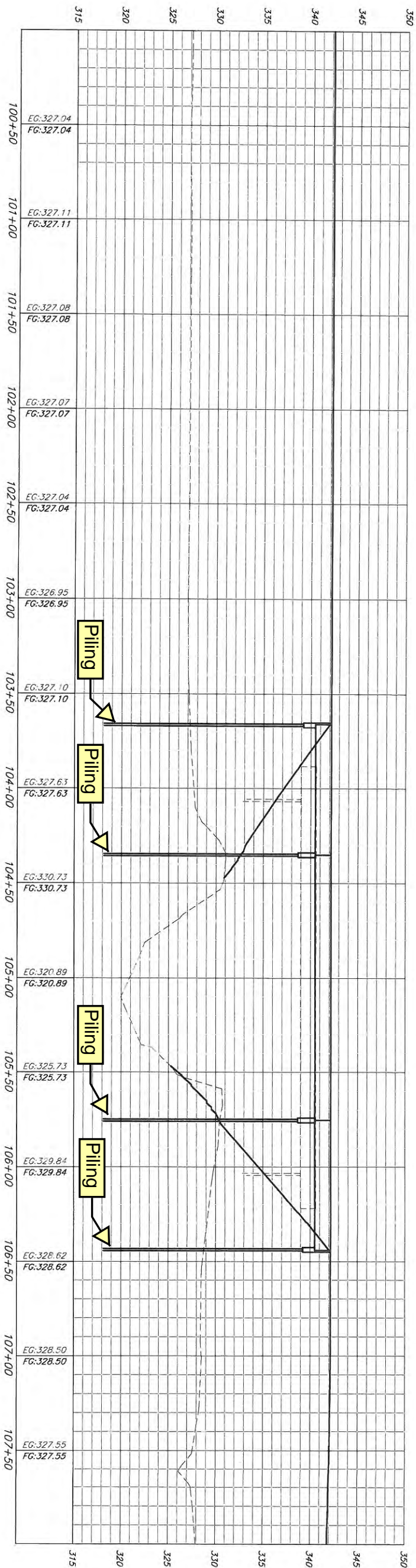
SURVEYED BY: RM, CB DATE: 3/13  
DESIGNED BY: DDT DATE: 4/13  
DRAWN BY: DKH DATE: 4/13  
CHECKED BY: WJC DATE: 4/13  
FIELD BOOK: 413

0 50 100  
THIS BAR WILL MEASURE 1" WHEN PRINTED AT FULL SCALE.

**ACTION NO. 2011-00260**

Shelby Road Extension  
ROAD CONSTRUCTION  
Wetlands Abutting Pike Creek  
January 2014 Sheet 7 of 9

NO.	REVISIONS



REVIEW COPY: January 24

SHELBY ROAD BRIDGE OVER PIKE CREEK  
 POPLAR BLUFF, BUTLER COUNTY, MISSOURI

**BRIDGE PLAN & PROFILE**

PROJECT #: P130060  
 DRAWING #: 3283.03  
 SHEET: 3

AN EMPLOYEE OWNED COMPANY

**SMITH & CO.**  
 ENGINEERS

901 VINE STREET, P.O. BOX 72  
 POPLAR BLUFF, MISSOURI 63902  
 (573) 785-9621 FAX: (573) 785-2951 WWW.SHSMITHCO.COM

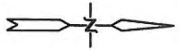
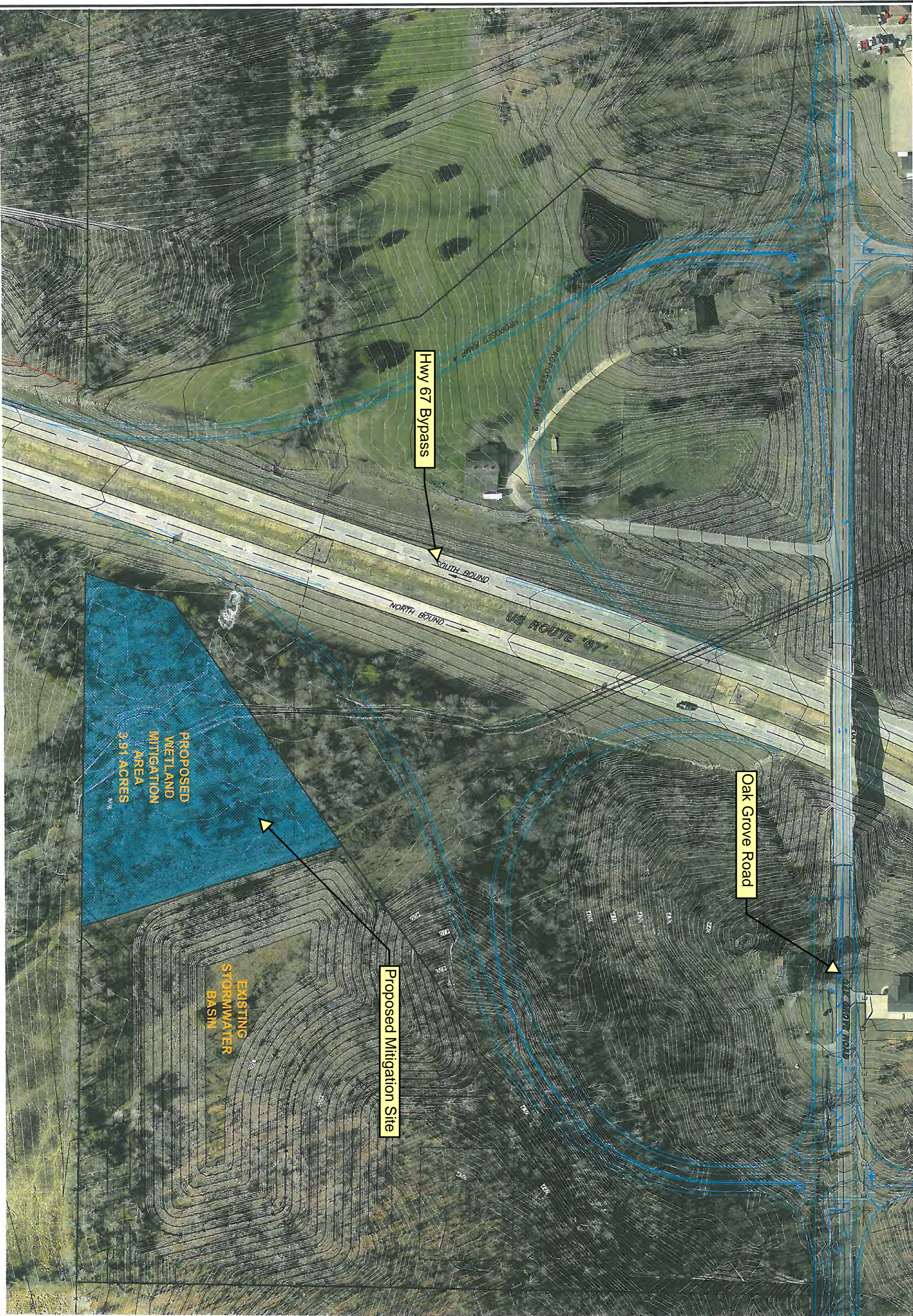
CIVIL ENGINEERING • SURVEYING •  
 ENVIRONMENTAL & GEOTECHNICAL SERVICES • MATERIAL TESTING

SURVEYED BY: CB DATE: 4/13  
 DESIGNED BY: JDM DATE: 4/13  
 DRAWN BY: DKH DATE: 4/13  
 CHECKED BY: WJC DATE: 4/13  
 FIELD BOOK: 413

0 15 30  
 THIS BAR WILL MEASURE 1" WHEN PRINTED AT FULL SCALE.

NO.	REVISIONS

**ACTION NO. 2011-00260**  
 Shelby Road Extension  
 ROAD CONSTRUCTION  
 Wetlands Abutting Pike Creek  
 January 2014 Sheet 8 of 9



PROJECT #: P130060  
 DRAWING #: N/A  
 SHEET: 1

**SHELBY ROAD WALK TRAIL  
 POPLAR BLUFF, MISSOURI**

**PROPOSED WETLAND MITIGATION**

AN EMPLOYEE OWNED COMPANY  
**SMITH & CO.**  
 ENGINEERS  
 801 VINE STREET, P.O. BOX 72  
 POPLAR BLUFF, MISSOURI 63902  
 (573) 785-9621 FAX: (573) 785-2651 WWW.SHSMITHCO.COM

CIVIL ENGINEERING • SURVEYING •  
 ENVIRONMENTAL & GEOTECHNICAL SERVICES • MATERIAL TESTING

SURVEYED BY: N/A DATE: N/A  
 DESIGNED BY: WJC DATE: 10/13  
 DRAWN BY: AFS DATE: 10/13  
 CHECKED BY: WJC DATE: 10/13  
 FIELD BOOK: N/A

0 40 80  
 THIS BAR WILL MEASURE 1" WHEN PRINTED AT FULL SCALE.

NO.	REVISIONS

**ACTION NO. 2011-00260**  
 Shelby Road Extension  
 ROAD CONSTRUCTION  
 Wetlands Abutting Pike Creek  
 January 2014 Sheet 9 of 9