

# Welcome

to the

## Bull Shoals Lake

### Master Plan Revision

### Open House

- ✓ At the open house you can:
  - Learn about the project
  - Provide comments on the Draft Master Plan and Draft Environmental Assessment (EA)
  - Watch a informational video
- ✓ Provide comments by:
  - Completing a comment form
  - Speaking with a court reporter
  - Sending an email, letter, or fax to USACE
- ✓ Find the Draft Master Plan and Draft EA at:  
<http://go.usa.gov/3fZez>

**WE WANT TO  
HEAR FROM YOU!**



**US Army Corps  
of Engineers®**  
Little Rock District

# How to Comment

Comments are due by September 11, 2015

Please return your comment sheet in the  
comment box before leaving

or

mail, email, or fax comments to:

Dana Coburn, Chief,  
Environmental Branch,  
Planning and Environmental,  
USACE, Little Rock District  
P.O. Box 867

Little Rock, AR 72203

**Fax:** (501) 324-5605

**Email:** [CESWL-BSMasterPlan@usace.army.mil](mailto:CESWL-BSMasterPlan@usace.army.mil)

or

Speak to the court reporter

**For more information:** <http://go.usa.gov/3fZez>

Comments must be postmarked,  
e-mailed, faxed, or hand delivered  
by September 11, 2015



**US Army Corps  
of Engineers®**  
Little Rock District



# Bull Shoals Lake Master Plan Environmental Assessment

The Little Rock District is updating the Bull Shoals Lake Master Plan.

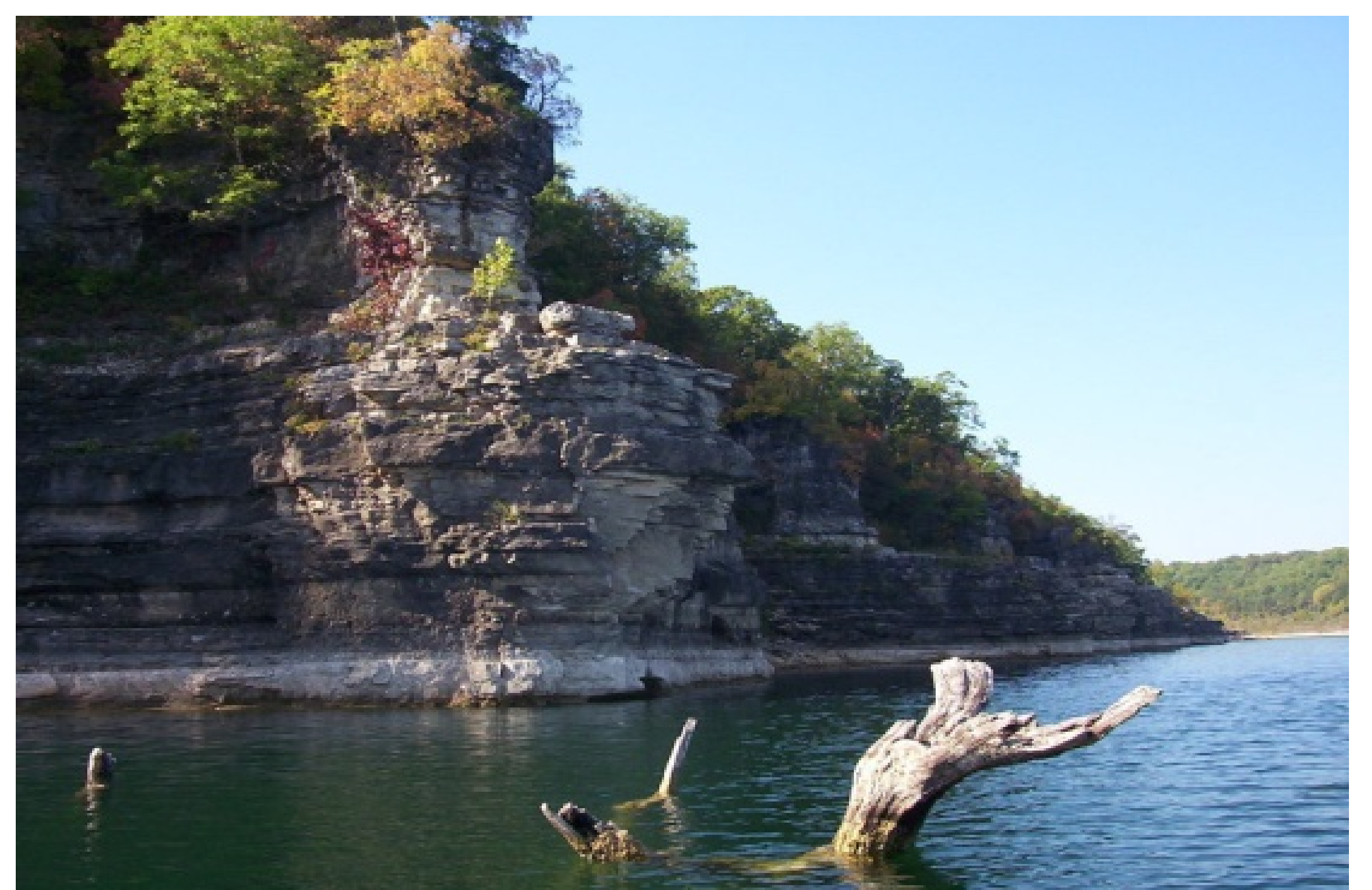
The district has prepared a draft environmental assessment (EA) to evaluate the potential environmental and social effects of several master plan alternatives.

**Your input is important!**

Your input will help define the final Bull Shoals Lake Master Plan and EA scheduled for completion in late 2015

**Please let us know:**

- ✓ Which of the four alternatives do you prefer and why?
- ✓ Were all of the environmental resources and potential impacts discussed?
- ✓ What changes, if any, would you like to see in the final documents?

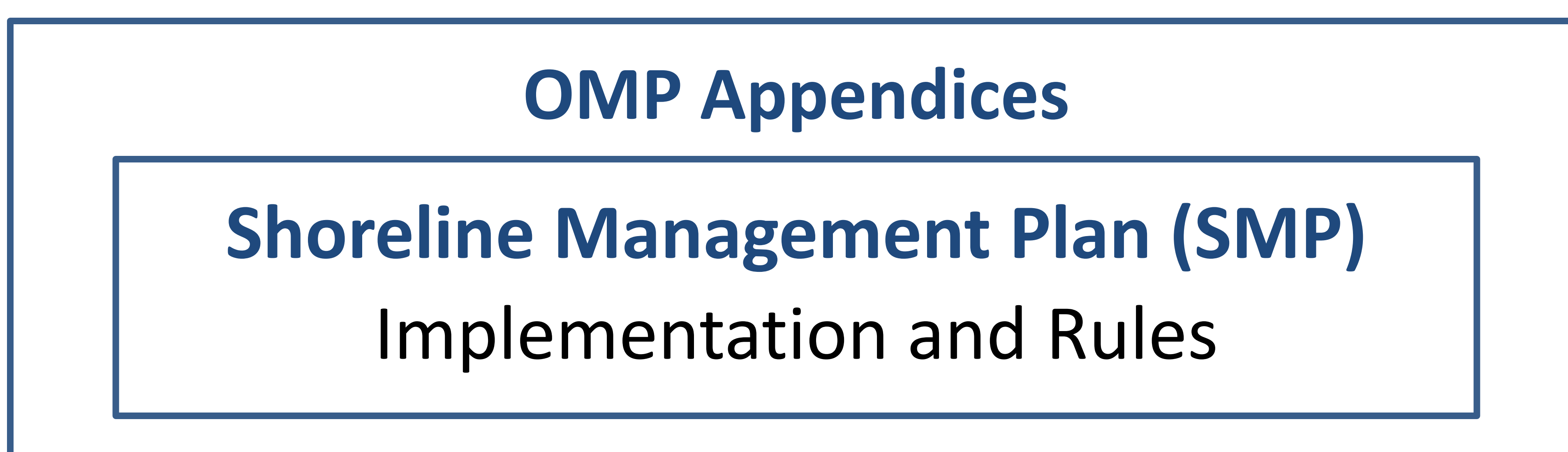
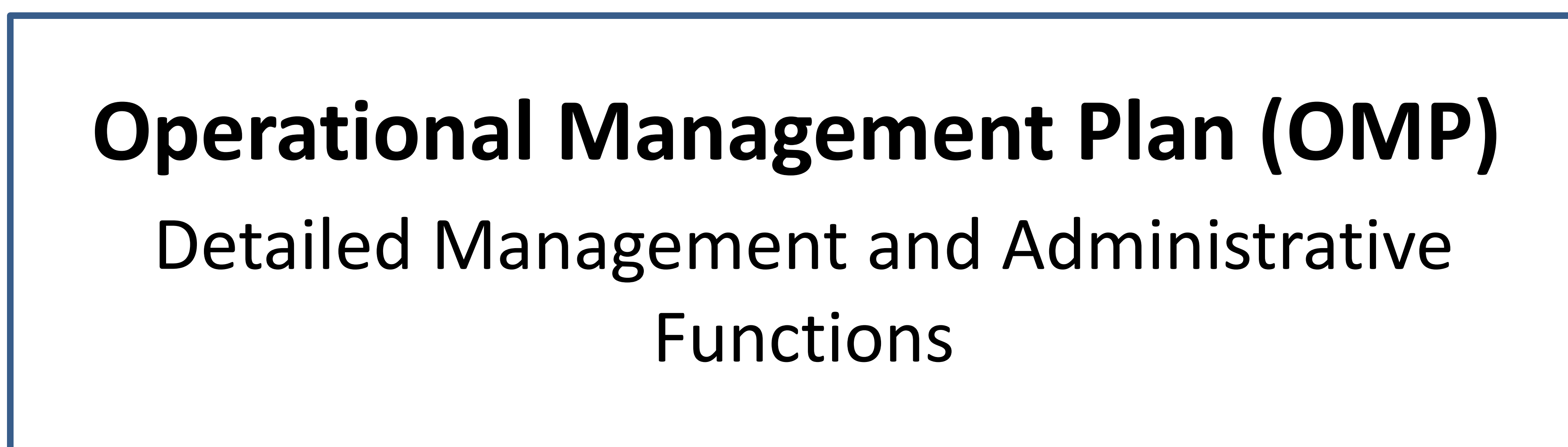


# Why Revise the Master Plan?

- The current plan was developed in 1975
- Customer uses have remained similar, but trends, facility and service demands have shifted in the past 40 years
- Bull Shoals Lake is an alternative recreational and natural resource experience for visitors to the White River watershed projects
- To align with current Corps policies/regulations
- Use of new technology and maps for greater accuracy and efficiency
- Respond to changing land usage
- Balance resources with partner and stakeholder interests
- Proactively prepare for resource demands
- Sustainably manage the lake's resources for future generations







## **Alternative 1 - No Action**

- Land classifications would stay the same as in the 1975 Master Plan
- Currently unclassified land would remain unclassified contributing to confusion about allowable land uses
- Would maintain existing resource management practices around the lake
- Would not respond to changed conditions or reflect current needs

## **Alternative 2 - Moderate Conservation (Preferred Alternative)**

- Reflects the actual current land uses and management around the lake
- High and low density recreation classified lands decrease from Alternative 1
- Environmentally sensitive areas and wildlife management classified lands increase
- Currently unclassified lands would be allocated to one of the five classifications



## **Alternative 3 – Limited Development**

- High and low density recreation classified lands decrease, but less than under Alternative 2
- Environmentally sensitive and wildlife management classified lands increase, but less than under Alternative 2
- Would allow for more low impact recreation potential than under Alternatives 2 and 4, but less than under Alternative 1

## **Alternative 4 – Maximum Conservation**

- High density recreation classified lands decrease from Alternative 1
- All low density areas in Alternative 2 are converted to environmentally sensitive
- Environmentally sensitive and wildlife management classified lands increase
- No additional future development of the shoreline or project lands
- Existing shoreline uses grandfathered and allowed to remain; however, no new shoreline use permits issued
- Maximizes the protection of natural resources

# To Provide Verbal Comments

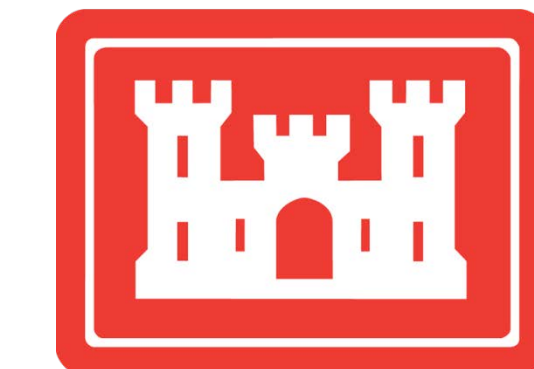
## Court Reporter



**US Army Corps  
of Engineers®**  
Little Rock District



# Bull Shoals Lake Master Plan Revision Timeline



US Army Corps  
of Engineers®  
Little Rock District

Planning began  
in April 2014

Focus Groups  
March/April 2015

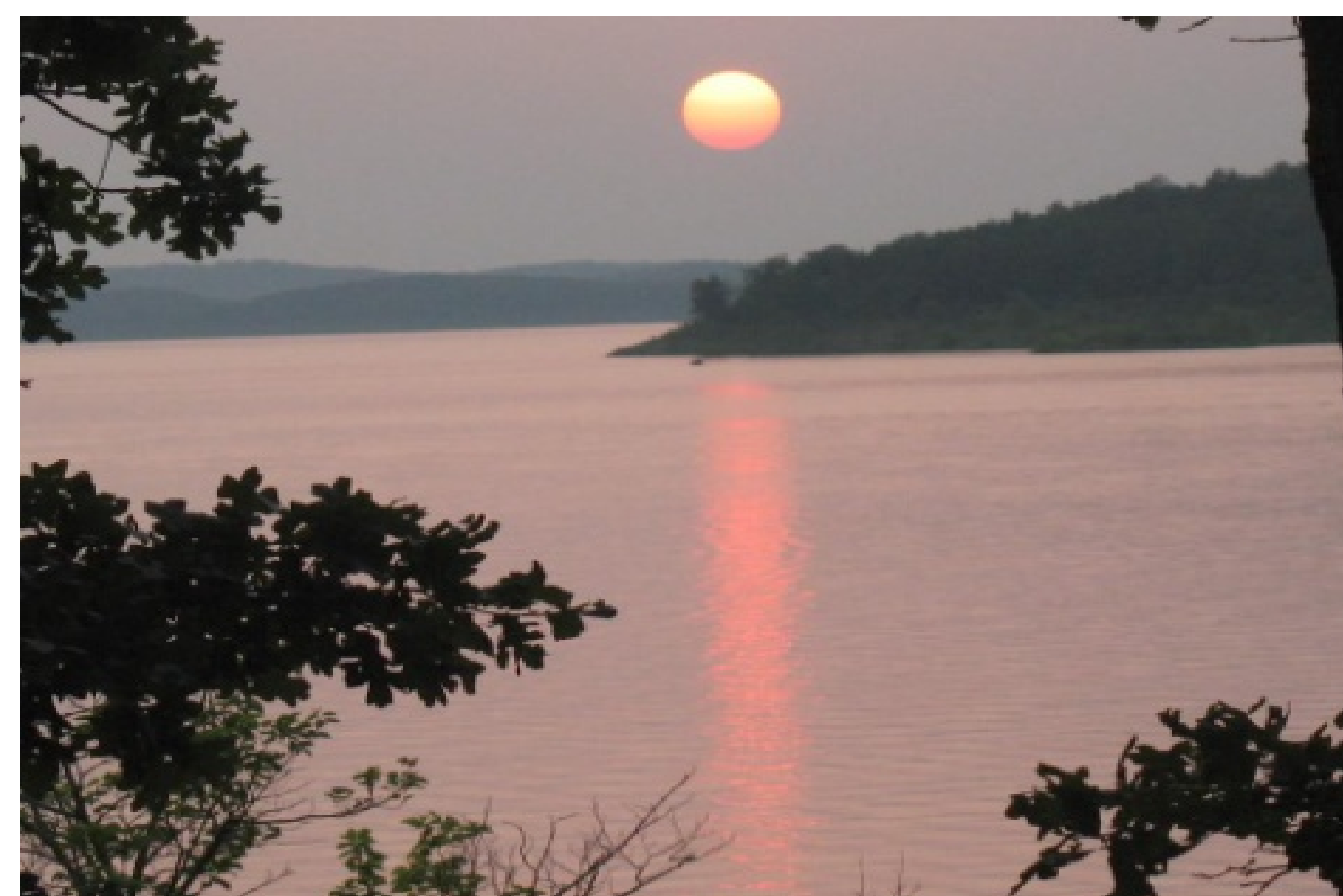
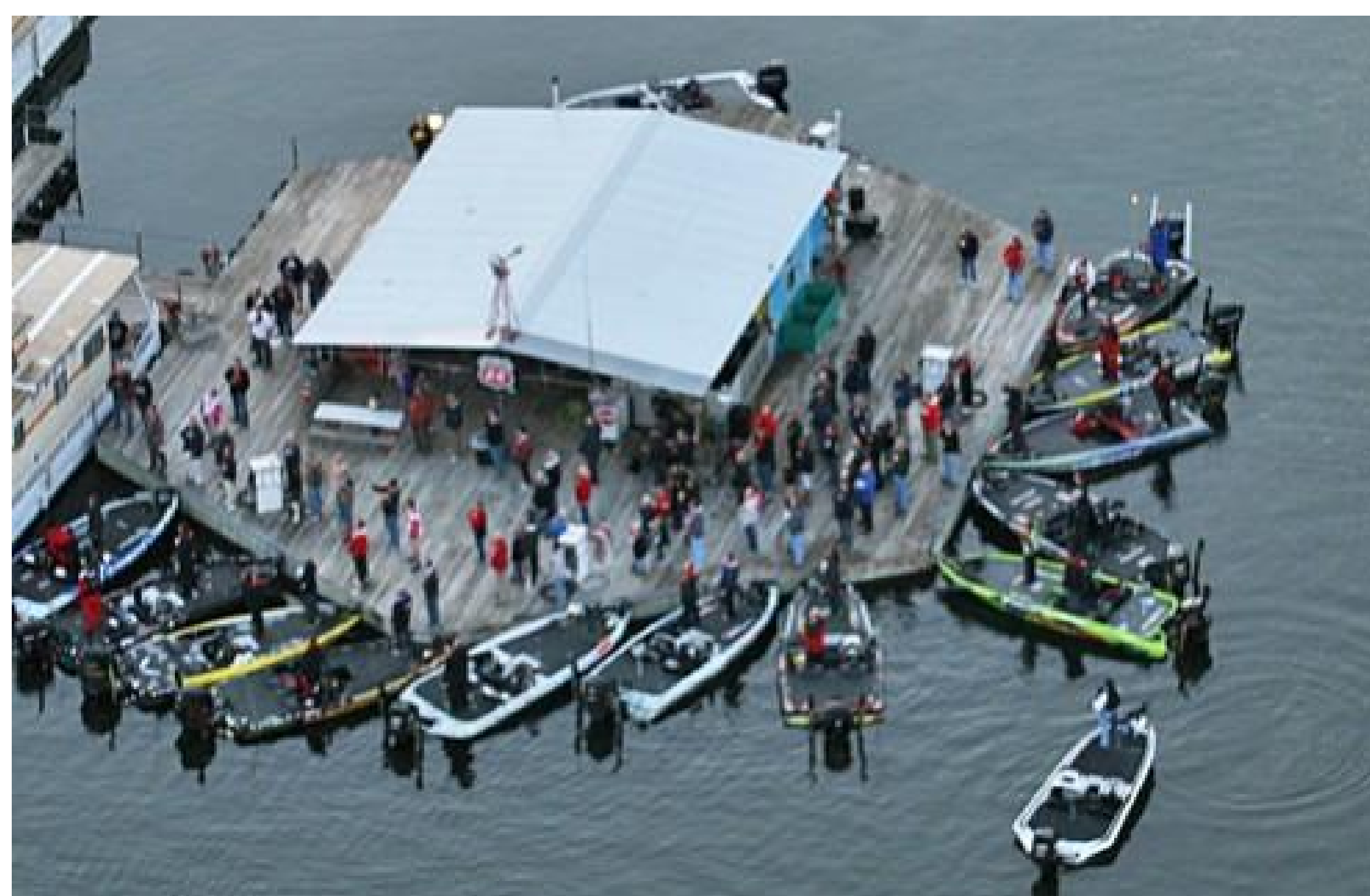
July-September 2015  
Public Review of Draft Master Plan  
& Draft Environmental Assessment  
(EA)

November 2015  
Final Master Plan  
& EA Released

August 2014  
Agency & Public  
Scoping Workshops

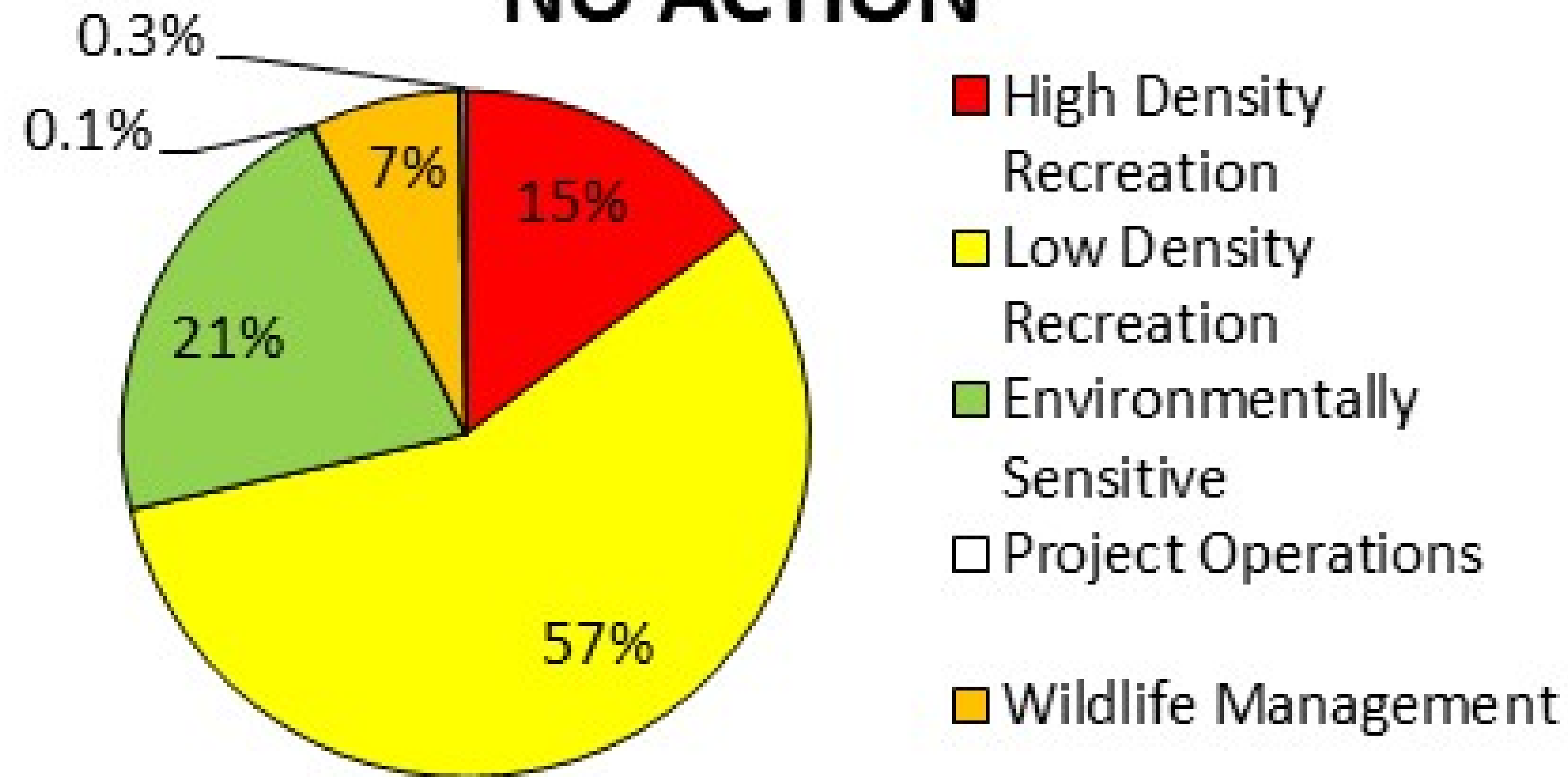
August 2015  
Public Open House on Draft  
Master Plan & Draft EA

2016 Initiate  
Shoreline  
Management  
Plan Update

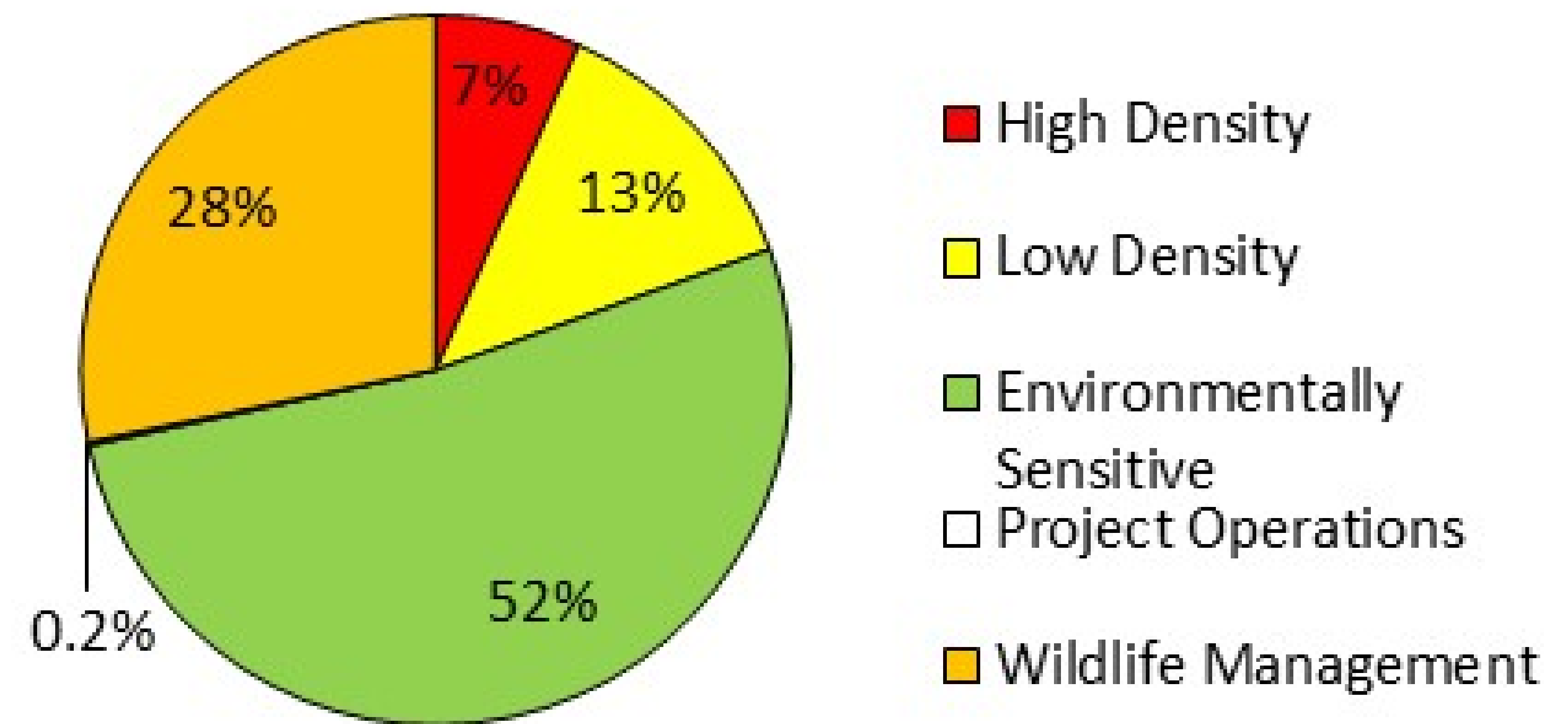


# Land Classifications by Alternative

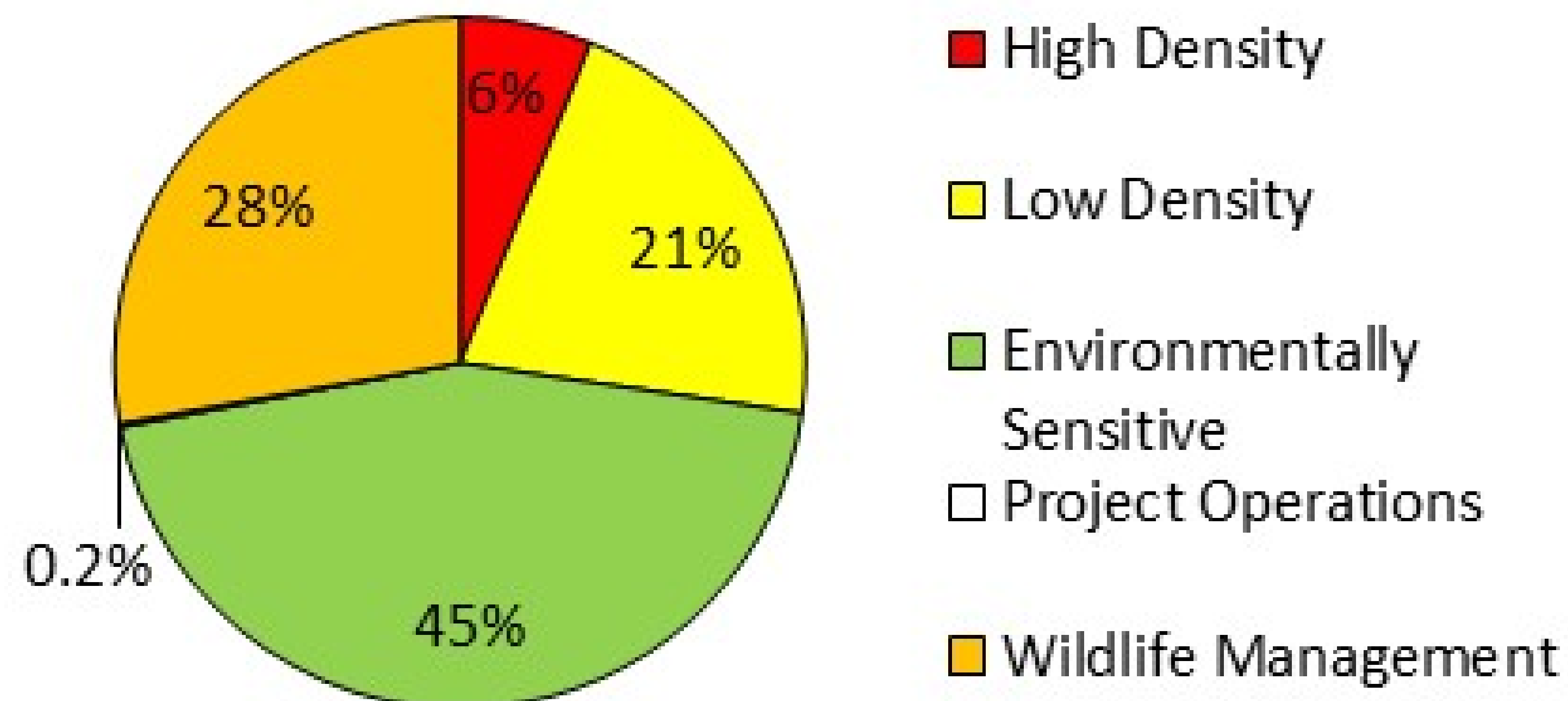
**ALTERNATIVE ONE  
NO ACTION**



**ALTERNATIVE TWO - MODERATE  
CONSERVATION (PREFERRED)**



**ALTERNATIVE THREE - LIMITED  
DEVELOPMENT**



**ALTERNATIVE FOUR  
MAXIMUM CONSERVATION**

