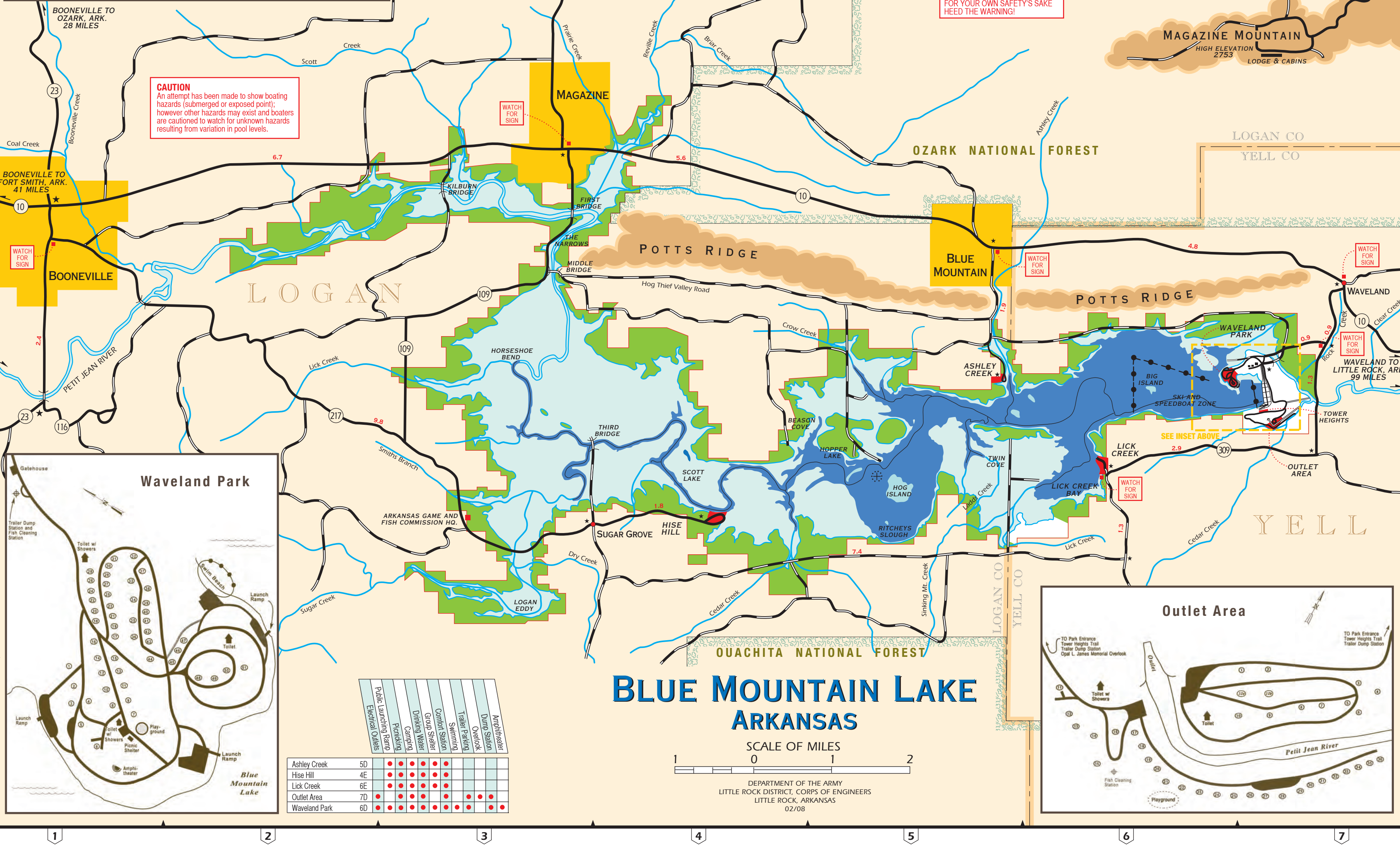
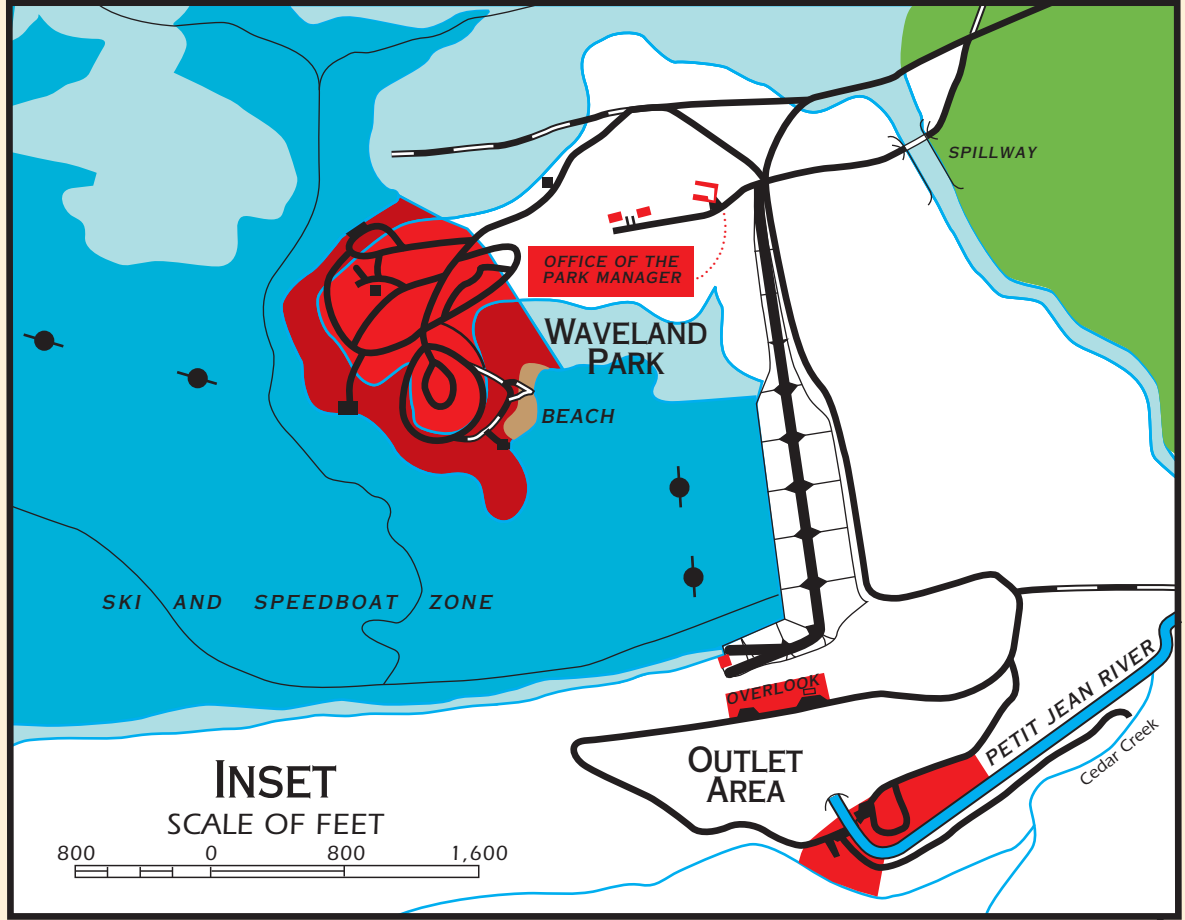


**LEGEND**

- State Highway
- Paved Road
- Graveled or Secondary Road
- Mileages
- Lake at Full Flood-Control Pool Level, El. 419
- Lake at Conservation Pool Level, (March to Oct. El. 387, Oct. to March El. 384)
- Park
- Submerged or Exposed Point
- Buoy
- Project Boundary
- Areas Open for In-Season Hunting

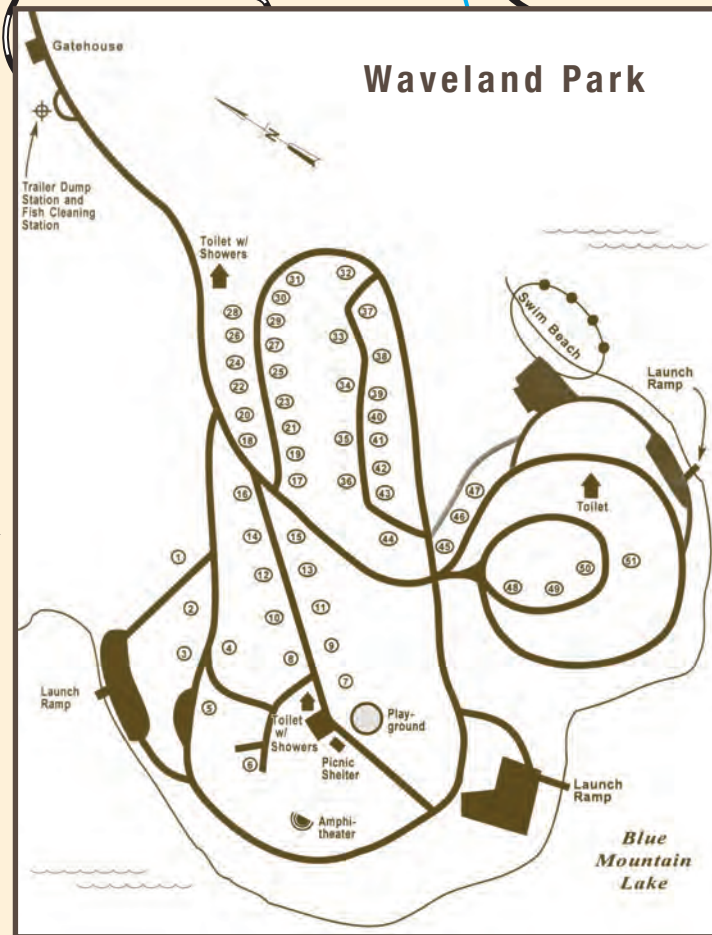
**ROAD MILEAGES TO DAM**

FROM	MILES
Little Rock, Arkansas	101
Conway, Arkansas	83
Hot Springs, Arkansas	81
Mena, Arkansas	81
Morrilton, Arkansas	63
Fort Smith, Arkansas	56
Waldron, Arkansas	46
Ozark, Arkansas	46
Dardanelle, Arkansas	36
Paris, Arkansas	26
Darville, Arkansas	17



**CAUTION**  
An attempt has been made to show boating hazards (submerged or exposed point); however other hazards may exist and boaters are cautioned to watch for unknown hazards resulting from variation in pool levels.

**CAUTION**  
When winds of 25 M.P.H. or more are forecast or blowing, boats are cautioned to stay out of open water. FOR YOUR OWN SAFETY'S SAKE HEED THE WARNING!



	Public Launch Ramp	Electrical Outlets	Camping	Drinking Water	Group Shelter	Comfort Station	Swimming	Trailer Parking	Dump Station	Amphitheater
Ashley Creek	5D									
Hise Hill	4E									
Lick Creek	6E									
Outlet Area	7D									
Waveland Park	6D									

